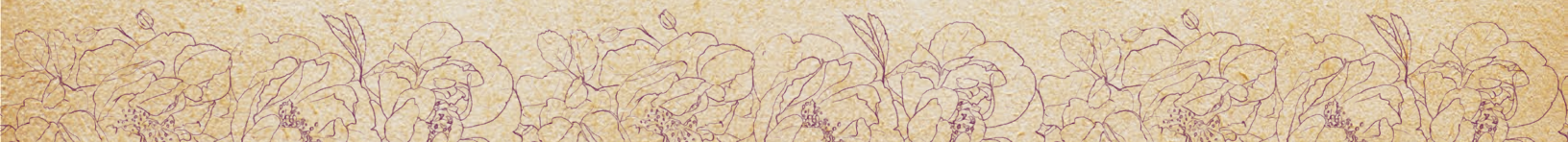




A PATREON
EXCLUSIVE PATTERN

© 2023 Charm Patterns by Gertie

Secrets CLUTCH

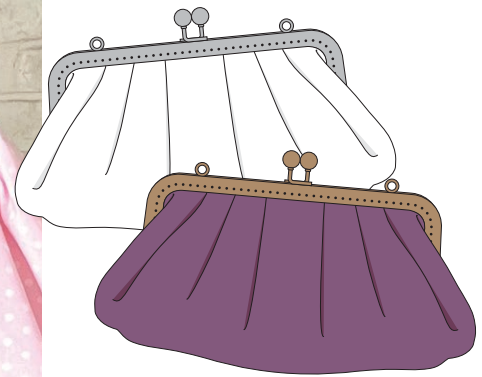




Ooh la la! You've been asking for accessories, and this fabulous little clutch delivers!

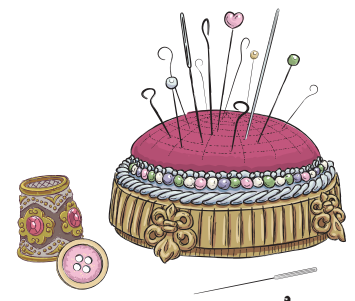
Roomy enough to hold all your clandestine items, the Secrets Clutch is the perfect pairing for all your Charm outfits. Make it in cotton broadcloth to match your summer skirts or in glamorous silk taffeta for evening wear. This versatile and useful accessory is sure to expand your wardrobe and your sewing skills!

xoxo, Gertie



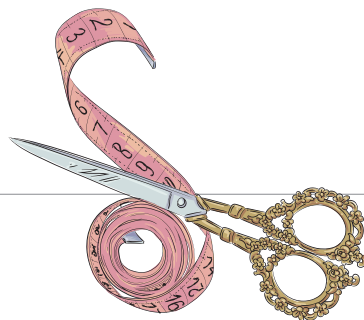
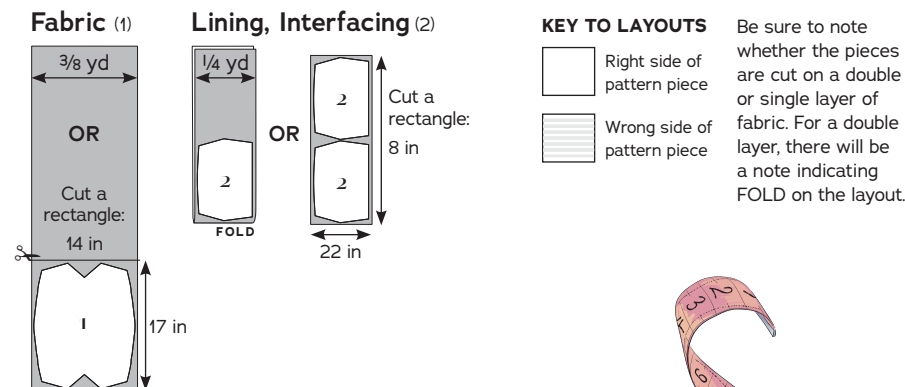
Key Details

- Fully lined
- Versatile fabric options
- Roomy tuck pleats



REQUIRED YARDAGE & CUTTING LAYOUTS

NOTE: All pattern pieces are shown in a “without nap” layout on 45 in wide fabric.



SEWING INSTRUCTIONS

Before Sewing

Transferring marks: Use dressmaker’s tracing paper and a tracing wheel to transfer all pattern markings to the wrong side (WS) of your fabric. Mark pattern notches by snipping into the seam allowance with the tip of your scissors.

Interfacing: The lining pieces need to be stabilized with fusible fleece prior to sewing. Follow the interfacing cutting instructions on the pattern pieces. Apply fusible fleece to the WS of the fabric, using a press cloth and steam. Do not rub your iron back and forth; lift it up and press it down for several seconds at a time until fleece is fully adhered.



Notes

- 5/8-in (1.5 cm) seam allowances are included on all pattern pieces, except where otherwise noted.
- This clutch purse is designed for an 8-inch (20 cm) frame. If your frame is larger or smaller, calculate the difference and print your pattern pieces larger or smaller accordingly.
- Follow the instructions for your heavy-duty adhesive to account for drying time. Unfortunately, this isn’t a project you get to use the same day you make it! Our samples took 24 hours to fully dry.

Pattern Pieces

- 1. Clutch Exterior**
Cut 1 fabric
- 2. Clutch Lining**
Cut 2 lining, 2 interfacing

Fabric Notes

We recommend medium-weight wovens with some body and crispness for the clutch exterior. Suitable fabrics include: cotton broadcloth, sateen, and velvet; silk taffeta, satin, dupioni, and shantung; and brocades.

Any lining fabric can be used for the interior lining but cotton works best with the fusible fleece.

Materials & Notions

- Fabric for the clutch
- Lining fabric
- Thread to match
- Fusible fleece to be used as interfacing
- 8-inch purse frame
- Heavy-duty adhesive
- Low-stick tape (such as painter’s tape)

Resources

Here are some of the supplies I used for the samples. There are lots of places to purchase supplies, so this is solely a guide to use for reference:

All of the fabrics came from our studio stash.

[Purse Frame](#)

[Purse Chain](#)

[Fusible Fleece](#)

[Heavy-duty Adhesive](#)

Sew the Clutch

1. Form tuck pleats

With right sides (RS) together, bring pleat lines together along top edge of Clutch Exterior (1), following arrows. Pin each tuck pleat in place, making sure the pleat lines are exactly on top of each other.



Stitch along pleat lines.



Press tuck pleats toward center from WS.



Secure tuck pleats by basting with a 1/2-in (1.3 cm) seam allowance.



2. Sew side seams

Fold clutch exterior in half with RS together and pin side seams from clutch opening circle to clutch bottom.



Stitch side seams.



Press seam allowances to one side.



3. Sew box pleat corner

Fold clutch exterior RS together so side seam aligns with clutch bottom centerline, creating a corner. Pin corner in place, keeping seam allowance to one side.



Stitch between circles along box pleat stitching line.



Press the small triangle toward the side seam and stitch in the ditch along the side seam from the RS to secure.



Repeat for the opposite side.



4. Assemble lining

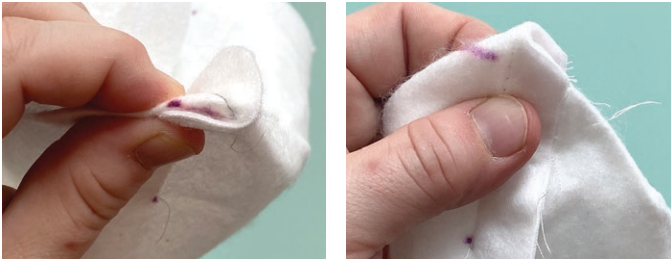
Fuse fleece to WS of Clutch Linings (2). Pin clutch linings RS together from clutch opening circle to lining bottom circle. Stitch from clutch opening circle to lining bottom circle, pivoting at corner. Clip corners and press side seam allowances to one side.



Press bottom seam allowances open and bottom opening raw edge $\frac{5}{8}$ inch (1.5 cm) to WS.

5. Sew lining box pleat corner

Fold lining RS together so side seam aligns with lining bottom seam, creating a corner.



Pin corner in place and stitch between circles along box pleat stitching line. Press the small triangle toward the lining bottom seam. Repeat for opposite side.



6. Attach lining to clutch

Pin clutch exterior to clutch lining, RS together and tucking the exterior inside the lining.



As you pin, match circles, notches, and seams.



Stitch from one clutch opening circle to the other, backstitching at the beginning and end.



View from inside



View from outside

Repeat for the opposite side. Clip corners and turn RS out through opening in clutch lining. Press clutch opening seam flat.



7. Topstitch clutch opening

Topstitch the clutch opening between top circles at $\frac{1}{8}$ inch (3 mm). Press flat.



8. Stitch lining closed

Pin lining WS together at lining bottom.



Stitch lining bottom closed by machine or by hand to finish interior.



9. Glue clutch to frame

Apply heavy-duty adhesive to interior channel of purse frame, being careful to use a thin bead of glue along the entire length.



Carefully insert clutch fabric, making sure fabric is evenly distributed across frame and that it is fully inside the frame channel.





Secure with low-stick tape to hold as the adhesive dries.



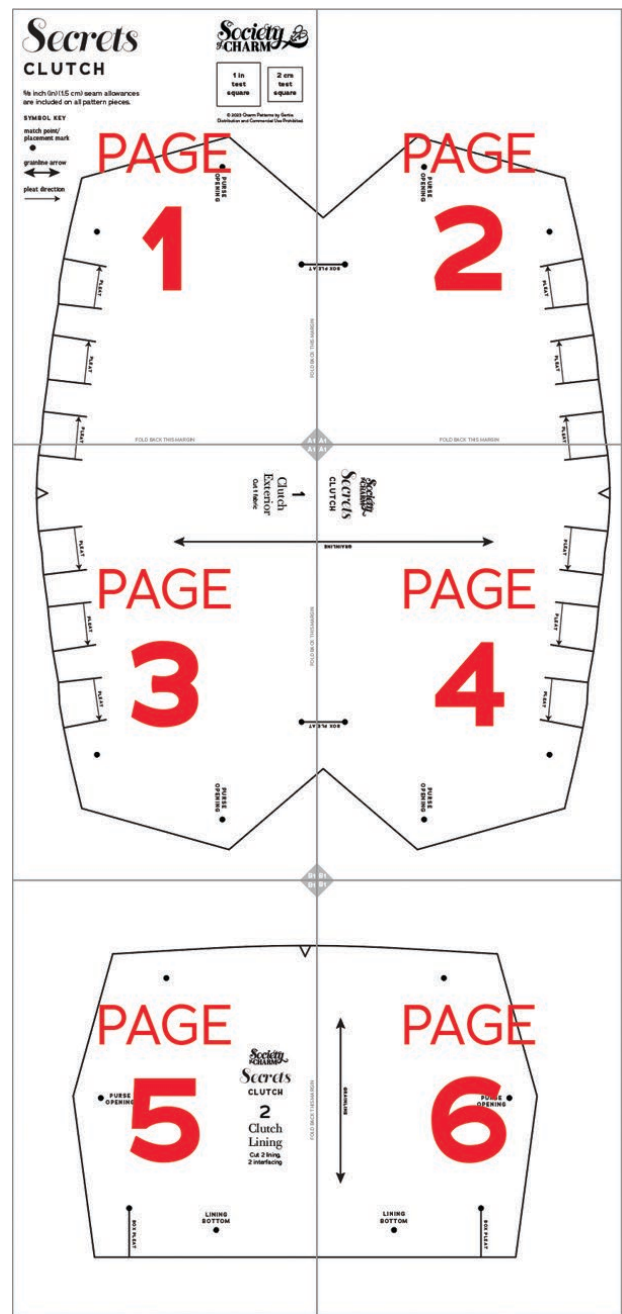
NOTE: Test your glue application before applying it to the frame. Too much glue will cause the adhesive to bubble out of the frame onto the fabric.

Enjoy your handy new Secrets Clutch!

PATTERN PIECE LOCATION GUIDE

Here is a list to help you locate the pattern pieces on the letter-size tiled pages. The tiled pieces are included as a separate pdf file as part of this digital pattern.

PC#	Piece Name	Tiled
1	Clutch Exterior	1-4
2	Clutch Lining	5-6



HOW TO USE THIS PATTERN

The pattern pieces are tiled so you can print them on Letter (8½" x 11") or A4 size paper.

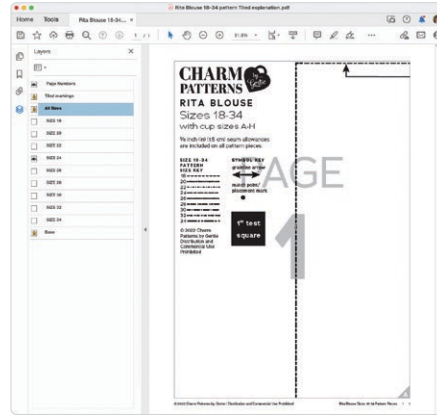
This pattern includes size layers. To get the best results, open the Tiled pattern pieces PDF in [Acrobat Reader](#).

Open the Layers Palette (View>Show/Hide>Navigation Panes>Layers) and hide all of the layer(s) except for the ones you want to print by clicking on the eye icon.

The All Sizes and Tiled Markings layers have general pattern information and will always print.

You may choose to turn off the

Page Numbers layer. The page numbers will still appear at the bottom of each page in the footer.



WORKING WITH THE TILED PIECES

Go to File>Print and change the page range to the pages you need for the pieces you've chosen (see Pattern Pieces Printing Index). Make sure the Page Sizing settings to 100% or Actual Size. Test this after printing by measuring the 1 inch (or 2 cm) test box on the first page of the pattern pieces.

Cut apart any pattern pieces that share a page, then fold back or cut off the page margins on each page as marked.

Match the letters in the gray corner diamonds. Tape the pages together, butting up the folded or cut page edges with the gray margin lines.

MORE FROM GERTIE

[On Instagram](#): Stay in the loop and get inspired.

[On YouTube](#): Learn beginner and advanced sewing skills and techniques through my tutorials, watch episodes of my Gertie's World series, and join regular live streams.

[On Patreon](#): Access monthly patterns and tutorial videos.

[At CharmPatterns.com](#): Shop my sewing patterns and accessories.

