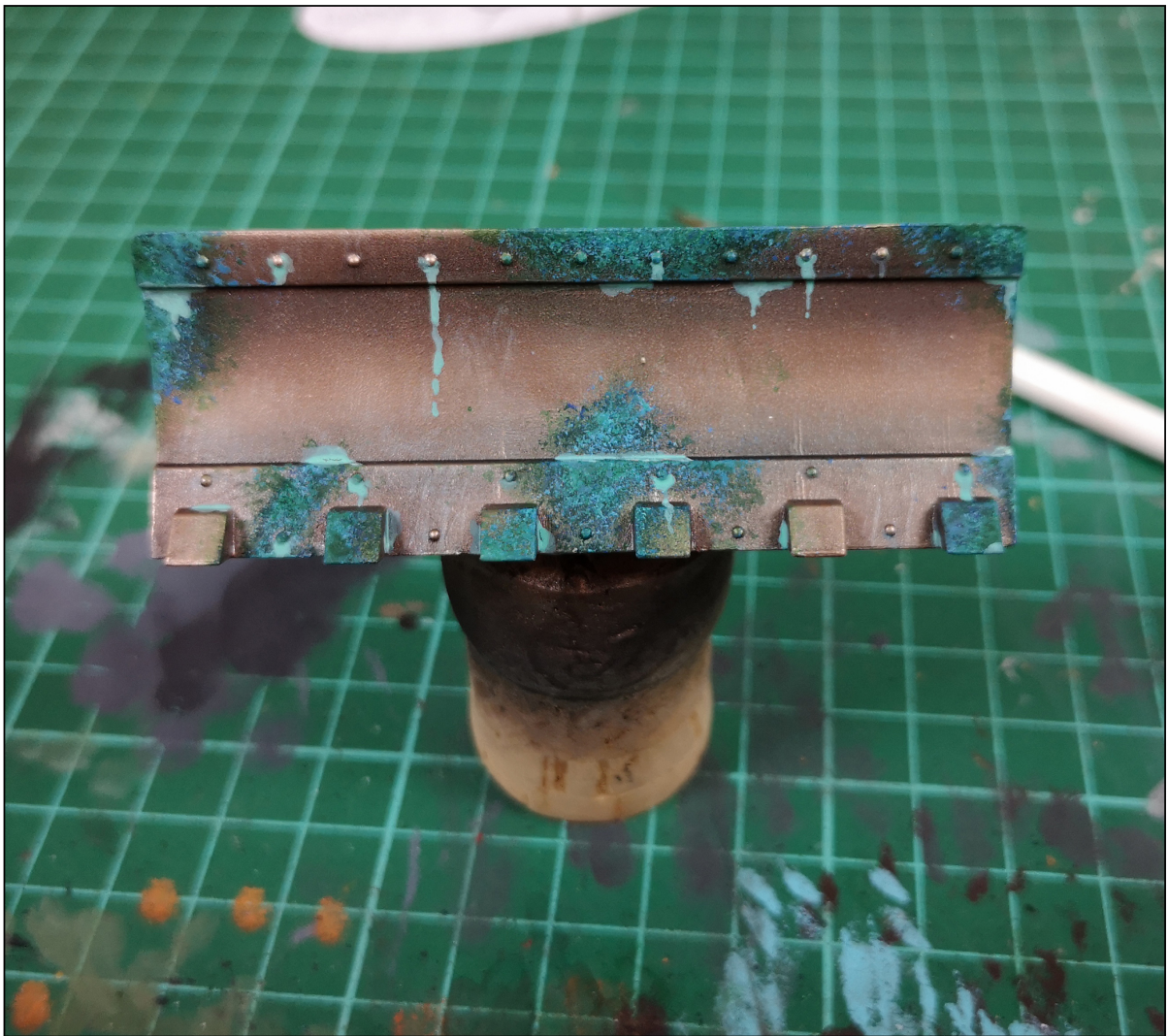


Siege



Studios

Bronze Verdigris Painting Tutorial



1



● Beil Tan Green
(Citadel Shade)

Using a rough sponge you are looking to apply random patches of Beil Tan Green Shade all over your bronze base colour.

This green semi-transparent base will give you a great starting point to begin layering up the next few layers of colour. You don't have to be too neat at this point as you are only marking out the verdigris will be.

2

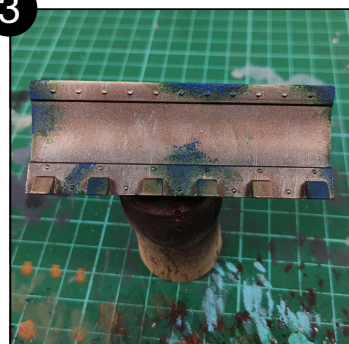


● Caliban Green
(Citadel Base)

Again using the sponge, you want to sparingly apply and rough patch of Caliban Green onto the area that you've already applied the previous colour to.

Try and stay visibly within the previous layer as this will allow the colours to transition into each other, giving a much more effective finish.

3



● Macragge Blue
(Citadel Base)

Using the same technique as before you now want to apply the blue element of the Verdigris.

To do this we will be using mcragge blue. Again ensure that you leave the previous colours visible through this layer and don't try to completely blot them out, you want this to look intentionally patchy and rough.

4



● Temple Guard
Blue (Citadel Layer)

The next colour we will use is Temple Guard Blue and we are going to follow exactly the same pattern and technique as before, gradually lightening our blue.

4



5



● Baharoth Blue
(Citadel Layer)

The final blue we will add is the brightest, Baharoth Blue.

We are still using the same technique but remember to add this colour very lightly as it is a very intense blue and it's easy to apply too much.

Once you are happy with the amount you have applied then you are ready for the final step.

6



● Beil-Tan Green
(Citadel Shade)

To give a real aged effect to the verdigris, re-complete Step 1.

Apply the Beil Tan Green again with the sponge blues you have just laid down, this time though you only want a small amount on the sponge and do it very lightly.

At this point we are making sure that the blue element isn't too intense and also adding a really aged feel to the piece.

Optional Extra...



● Nihilakh Oxide
(Citadel Technical)

As an optional extra step, at this point you could also try adding a small amount of Citadel's Nihilakh Oxide Technical paint under the bottom edge of and rivets or in any nooks and crannies that would be effective.

Once you've done this your effect is complete!