

CHARM
ARTIST
COLLECTIVE



SEWRENA COLLECTION

A PATREON EXCLUSIVE PATTERN

It's so fun working with guest artists to design for the Charm community, and this month has been no exception! Serena really knocked it out of the park with the SewRena Collection by creating a mix-and-match set to expand the Carousel Dress pattern. This collection includes a sleeve option, removable cuffs, collar, and dickey. One dress, so many different looks!

xoxo, *Gertie*

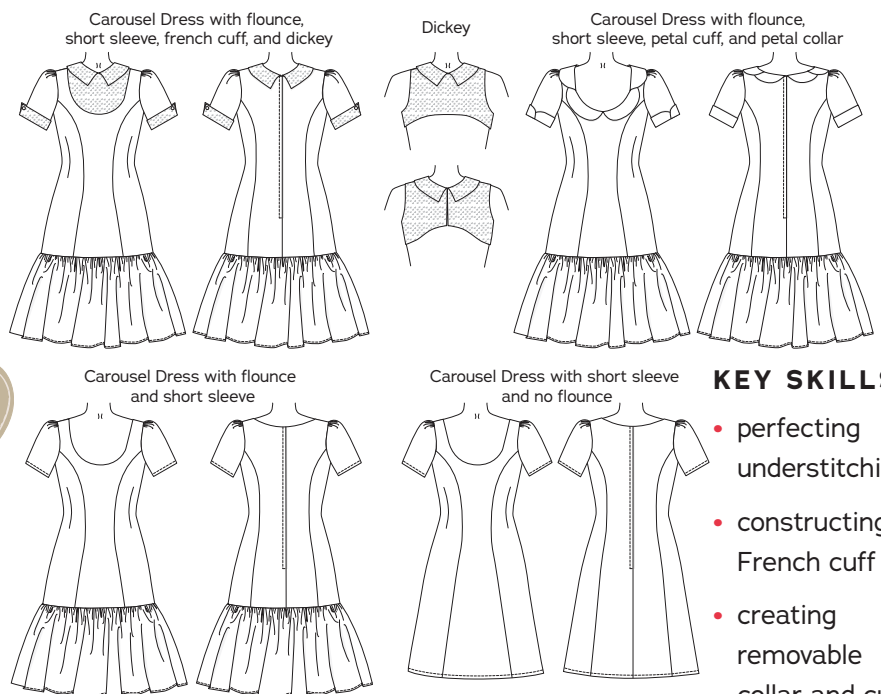
The SewRena Collection was inspired by my love of versatility and creativity. I admire how styles from the past include interchangeable accessories like collars, dummies, and cuffs to give staple wardrobe pieces new life. I also appreciate how simple these pieces can be so that the creator can customize these pieces and flex their skills, from trim and decorative stitching to embroidery and hand embellishments to give a very unique and personalized touch.

xoxo, *Serena*



ABOUT THE DESIGNER

Serena is a vintage pattern and sewing machine collector. She sets out to represent Black American beauty and fashion from the 1940s-'60s with her craft. Learn more about Serena on Instagram at @sewrena_.



KEY SKILLS

- perfecting understitching
- constructing a French cuff
- creating removable collar and cuffs

SIZE CHART

The SewRena Collection is a multi-piece assortment of pattern add-ons sized in women's US 2–20 and 18–34, A–H cup sizes. Please use the size charts below to pick your size. The High Bust measurement should be taken above your breasts and the Full Bust measurement should be taken at the fullest part of your bustline.

If you're in our Artist, Beat Princess, or Bohemian Princess tiers, make sure to check out our first fit clinic from February to learn more about measuring yourself, choosing a size, and making fit adjustments. Not sure which size range to choose?

Read more about our [new 18-34 size range here!](#)

SIZES

2-20	2	4	6	8	10	12	14	16	18	20
High Bust	29 in 73.7 cm	31 in 78.7 cm	33 in 83.8 cm	35 in 88.9 cm	37 in 94 cm	39 in 99 cm	41 in 104.1 cm	43 in 109.2 cm	45 in 114.3 cm	47 in 119.4 cm
Bust A cup	30.5 in 77.5 cm	32.5 in 82.5 cm	34.5 in 87.6 cm	36.5 in 92.7 cm	38.5 in 97.8 cm	40.5 in 102.9 cm	42.5 in 108 cm	44.5 in 113 cm	46.5 in 118.1 cm	48.5 in 123.2 cm
Bust B/C cup	31 in 78.7 cm	33 in 83.8 cm	35 in 88.9 cm	37 in 94 cm	39 in 99 cm	41 in 104.1 cm	43 in 109.2 cm	45 in 114.3 cm	47 in 119.4 cm	49 in 124.5 cm
Bust D/DD cup	32 in 81.3 cm	34 in 86.4 cm	36 in 91.4 cm	38 in 96.5 cm	40 in 101.6 cm	42 in 106.7 cm	44 in 111.8 cm	46 in 116.8 cm	48 in 121.9 cm	50 in 127 cm
Bust F/G cup	33 in 83.8 cm	35 in 88.9 cm	37 in 94 cm	39 in 99 cm	41 in 104.1 cm	43 in 109.2 cm	45 in 114.3 cm	47 in 119.4 cm	49 in 124.5 cm	51 in 129.5 cm
Bust H cup	34 in 86.4 cm	36 in 91.4 cm	38 in 96.5 cm	40 in 101.6 cm	42 in 106.7 cm	44 in 111.8 cm	46 in 116.8 cm	48 in 121.9 cm	50 in 127 cm	52 in 132.1 cm
Waist	24 in 61 cm	26 in 66 cm	28 in 71.1 cm	30 in 76.2 cm	32 in 81.3 cm	34 in 86.4 cm	36 in 91.4 cm	38 in 96.5 cm	40 in 101.6 cm	42 in 106.7 cm
Hips	36 in 91.4 cm	38 in 96.5 cm	40 in 101.6 cm	42 in 106.7 cm	44 in 111.8 cm	46 in 116.8 cm	48 in 121.9 cm	50 in 127 cm	52 in 132.1 cm	54 in 137.2 cm

SIZES

18-34	18	20	22	24	26	28	30	32	34
High Bust	39.5 in 100.3 cm	41.5 in 105.4 cm	43.5 in 110.5 cm	45.5 in 115.6 cm	47.5 in 120.7 cm	49.5 in 125.7 cm	51.5 in 130.8 cm	53.5 in 135.9 cm	55.5 in 141 cm
Bust A cup	42.5 in 108 cm	44.5 in 113 cm	46.5 in 118.1 cm	48.5 in 123.2 cm	50.5 in 128.3 cm	52.5 in 133.4 cm	54.5 in 138.4 cm	56.5 in 143.5 cm	58.5 in 148.6 cm
Bust B/C cup	43 in 109.2 cm	45 in 114.3 cm	47 in 119.4 cm	49 in 124.5 cm	51 in 129.5 cm	53 in 134.6 cm	55 in 139.7 cm	57 in 144.8 cm	59 in 149.9 cm
Bust D/DD cup	44 in 111.8 cm	46 in 116.8 cm	48 in 121.9 cm	50 in 127 cm	52 in 132.1 cm	54 in 137.2 cm	56 in 142.2 cm	58 in 147.3 cm	60 in 152.4 cm
Bust F/G cup	45 in 114.3 cm	47 in 119.4 cm	49 in 124.5 cm	51 in 129.5 cm	53 in 134.6 cm	55 in 139.7 cm	57 in 144.8 cm	59 in 149.9 cm	61 in 154.9 cm
Bust H cup	46 in 116.8 cm	48 in 121.9 cm	50 in 127 cm	52 in 132.1 cm	54 in 137.2 cm	56 in 142.2 cm	58 in 147.3 cm	60 in 152.4 cm	62 in 157.5 cm
Waist	40 in 101.6 cm	42 in 106.7 cm	44 in 111.8 cm	46 in 116.8 cm	48 in 121.9 cm	50 in 127 cm	52 in 132.1 cm	54 in 137.2 cm	56 in 142.2 cm
Hips	48 in 121.9 cm	50 in 127 cm	52 in 132.1 cm	54 in 137.2 cm	56 in 142.2 cm	58 in 147.3 cm	60 in 152.4 cm	62 in 157.5 cm	64 in 162.6 cm

FIT NOTES

The SewRena Collection is designed to extend your wardrobe by giving you many options to expand the Carousel Dress. The Short Sleeve, Petal Cuff, and French Cuff have 1/4–1/2 inch (in) (6 mm–1.3 cm) of ease at the bicep.

SIZES

2-20	2	4	6	8	10	12	14	16	18	20
Sleeve Opening	12 in 30.5 cm	12.5 in 31.8 cm	13 in 33 cm	13.5 in 34.3 cm	14 in 35.6 cm	14.5 in 36.8 cm	15 in 38.1 cm	15.5 in 39.4 cm	16 in 40.6 cm	16.5 in 41.9 cm
Bicep	12.5 in 31.8 cm	13 in 33 cm	13.5 in 34.3 cm	14 in 35.6 cm	14.5 in 36.8 cm	15 in 38.1 cm	15.5 in 39.4 cm	16 in 40.6 cm	16.5 in 41.9 cm	17 in 43.2 cm

SIZES

18-34	18	20	22	24	26	28	30	32	34
Sleeve Opening	16 in 40.6 cm	16.5 in 41.9 cm	17 in 43.2 cm	17.5 in 44.5 cm	18 in 45.7 cm	18.5 in 47 cm	19 in 48.3 cm	19.5 in 49.5 cm	20 in 50.8 cm
Bicep	16.25 in 41.3 cm	16.75 in 42.5 cm	17.25 in 43.8 cm	17.75 in 45.1 cm	18.25 in 46.4 cm	18.75 in 47.6 cm	19.25 in 48.9 cm	19.75 in 50.2 cm	20.25 in 51.4 cm

MATERIALS & NOTIONS

- Fabric for the neck facings (to match Carousel Dress)
- Fabric for the sleeve, collar, cuffs, and/or dickey
- Thread to match
- Fusible interfacing (look for lightweight woven or tricot types)
- Thirteen 3/8-in flat buttons (for the Petal Collar or Dickey)
- Ten 3/8-in flat buttons (for the Petal Cuffs or French Cuffs)
- Two 1/2-in decorative buttons (for the French Cuffs)

FABRIC NOTES

We recommend light- to medium-weight wovens with body. Suitable fabrics include: cotton sateen, poplin, oxford, seersucker, chambray, madras, lawn, voile, eyelet, and shirtings; silk organza; and linen and linen blends.

RESOURCES

Here are some of the fabrics and supplies used for the samples. There are lots of places to purchase fabric, so this is solely a guide you can use as a reference:

[White silk satin organza](#)
(Gertie's Petal Collar and Cuffs)

[Silk & Wool Hammered Satin](#)
(Gertie's yellow dress)

[White Cotton Eyelet](#)
(Susie's Dickey and French Cuffs)

[Blue Plaid Linen](#)
(Susie's blue dress)

PATTERN PIECES

1. Front Neck Facing

Cut 1 fabric on fold,
1 interfacing on fold

2. Back Neck Facing

Cut 2 fabric, 2 interfacing

3. Short Sleeve

Cut 2 fabric

4. Sleeve Hem Facing

Cut 2 fabric, 2 interfacing

5. Petal Collar Front

Cut 4 fabric, 2 interfacing

6. Petal Collar Side

Cut 4 fabric, 2 interfacing

7. Petal Collar Back

Cut 4 fabric, 2 interfacing

8. Petal Collar Facing

Cut 2 fabric on fold,
1 interfacing on fold

9. Petal Cuff

Cut 4 fabric, 2 interfacing

10. Petal Cuff Facing

Cut 4 fabric, 2 interfacing

11. French Cuff

Cut 4 fabric, 2 interfacing

12. Dickey Front

Cut 2 fabric on fold

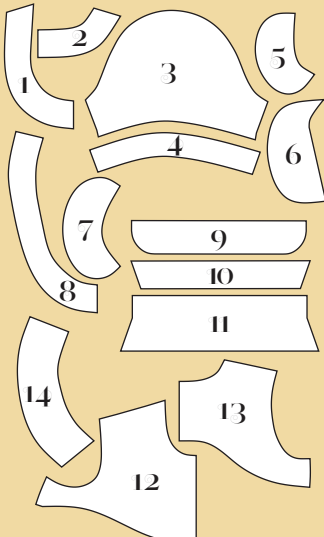
13. Dickey Back

Cut 4 fabric

14. Dickey Collar

Cut 4 fabric, 2 interfacing

All-in-One Facing Button Placement Guide



REQUIRED YARDAGE & CUTTING LAYOUTS

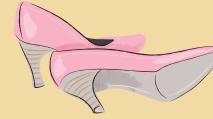
Notes:

- All pattern pieces are shown in a “without nap” layout. You may need additional yardage for directional prints, stripes, plaids, and other prints that need to be matched across seamlines.
- For pieces that you are cutting from the same fabric as your Carousel Dress, you may be able to fit them into the same cutting layout as the rest of the dress. Likewise, you can combine interfacing pieces into one layout in order to save yardage.
- Pay close attention to the cutting directions for each piece, noting whether you cut 2 or 4.

KEY TO LAYOUTS

Right side of pattern piece

Wrong side of pattern piece



Be sure to note whether the pieces are cut on a double or single layer of fabric. For a double layer, there will be a note indicating FOLD on the layout.

NECK FACINGS

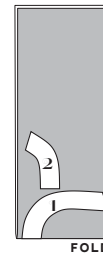
for Carousel Dress with sleeves only

Fabric (1, 2)

Use the same cutting layouts as in Carousel Dress, but replace pattern pieces 7 and 8 with the SewRena Collection Neck Facings, pieces 1 and 2.

Interfacing (1, 2)

All sizes	
60 in	3/8 yd .3 m

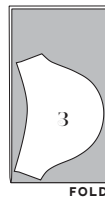


SHORT SLEEVE

no cuffs

Fabric (3)

All sizes	
45 in	1/2 yd .5 m
60 in	.5 m

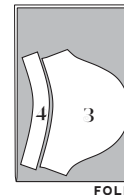


SHORT SLEEVE

with removable cuffs

Fabric (3, 4)

Sizes 2-10	
45 in	1/2 yd .5 m
60 in	.5 m



Interfacing (4)

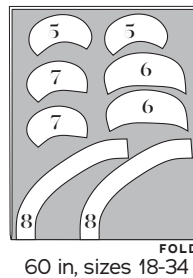
All sizes	
60 in	5 in 12.7 cm



REMOVABLE PETAL COLLAR

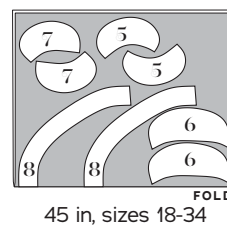
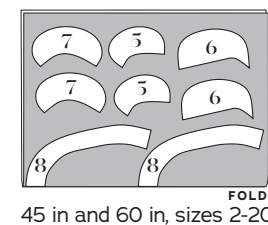
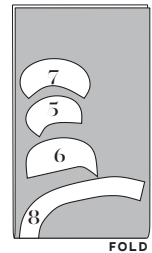
Fabric (5, 6, 7, 8)

	Sizes 2-20	Sizes 18-34
	45 in	1 yd .9 m
60 in	1 yd .9 m	3/4 yd .7 m



Interfacing (5, 6, 7, 8)

	Sizes 2-20	Sizes 18-34
	60 in	5/8 yd .6 m



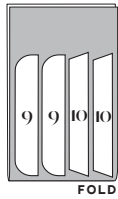
REMOVABLE PETAL CUFF

Fabric (9, 10)

Interfacing (9, 10)

All sizes	
45 in	1/2 yd
60 in	.5 m

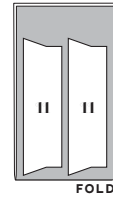
All sizes	
60 in	7 in
	17.8 cm



REMOVABLE FRENCH CUFF

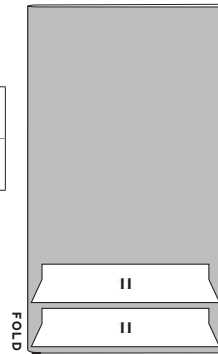
Fabric (11)

	Sizes	Sizes	Sizes
	2-20	18-24	26-34
45 in	3/8 yd .3 m	3/8 yd .3 m	1 1/2 yd 1.4 m
60 in	3/8 yd .3 m	3/8 yd .3 m	3/8 yd .3 m



45 in,
sizes 2-24

60 in,
all sizes

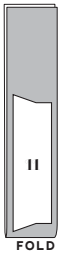


45 in, sizes 26-34

Rotate piece 11 crosswise for this layout, folding the fabric perpendicular to the selvages.

Interfacing (11)

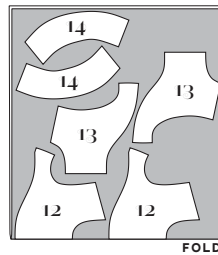
All sizes	
60 in	6 in
	15.2 cm



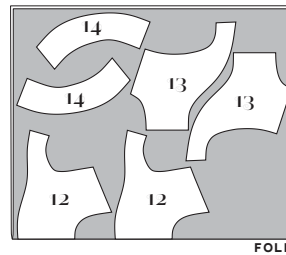
DICKEY

Fabric (12, 13, 14)

	Sizes	Sizes	Sizes	Sizes
	2-10	12-20	18-24	26-34
45 in	1 1/8 yds 1 m	1 1/4 yds 1.1 m	1 3/8 yds 1.3 m	1 3/8 yds 1.3 m
60 in	7/8 yd .8 m	1 yd .9 m	1 1/8 yds 1 m	1 1/4 yds 1.1 m



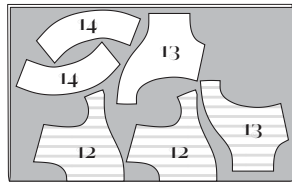
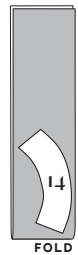
60 in, sizes 2-20



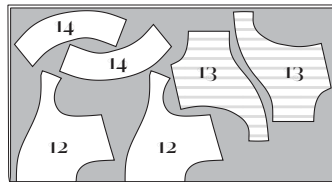
60 in, sizes 18-34

Interfacing (4)

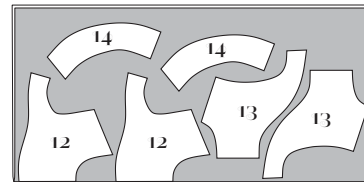
All sizes	
60 in	8 in
	20.3 cm



45 in, sizes 2-10



45 in, sizes 12-20

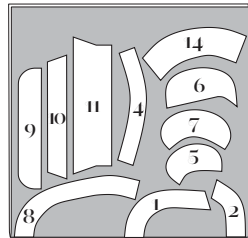


45 in, sizes 18-34

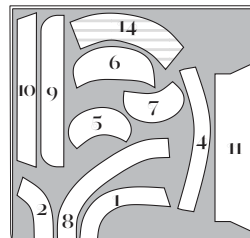
All Interfacing together

(1, 2, 4, 5, 6, 7, 8, 9, 10, 11, 14)

All sizes	
60 in	1 yd
	.9 m



sizes 2-20



sizes 18-34

SEWING INSTRUCTIONS

BEFORE SEWING

Transferring marks: Use dressmaker's tracing paper and a tracing wheel to transfer all pattern markings to the wrong side (WS) of your fabric. Mark pattern notches by snipping into the seam allowance with the tip of your scissors.

Interfacing: Many of the pattern pieces need to be stabilized with fusible interfacing prior to sewing. Follow the interfacing cutting instructions on the pattern pieces. Apply fusible interfacing to the WS of the fabric,

using a press cloth and steam. Do not rub your iron back and forth; lift it up and press it down for several seconds at a time until interfacing is fully adhered. If using silk organza or another transparent fabric, skip interfacing the collar and cuff pieces.

Seam Finishing: If finishing seams with a serger, serge the following seam allowances (without trimming the edges) before construction.

- Lower edge of Front and Back Neck Facings (1 and 2)
- Unnotched edge of Sleeve Hem Facing (4)

NOTES

- 5/8-in (1.5 cm) seam allowances are included on all pattern pieces, except where otherwise noted.
- If you don't have a serger, consider using a zigzag or overlock stitch on your sewing machine.
- If you find it difficult to see notches after serging, you may wish to mark them with chalk, thread tacks, or another marking tool.

TIPS

- While the SewRena Collection cuffs, collar, and dickey are designed to be removable, alternatively you may wish to sew them permanently or baste them in by hand for more security. Additionally, you may wish to secure the dickey to your dress temporarily underneath the armholes.
- We added three decorative buttons to the front of Suzie's dickey to match her French cuffs and pinned a fabric rose to the front of Gertie's petal collar. Serena added pintucks to the front of her dickey, and piping and bias binding around the edges of her petal cuff and collar. The options for decoration are endless!

SEW THE COLLECTION

The SewRena Collection is an interchangeable set of additions to the Carousel Dress that includes a sleeve option, two sleeve cuffs, a collar, and a dickey.

To add the short sleeves from the SewRena Collection to the Carousel Dress, with or without the removable collar and dickey, skip to the Dress Facing with Sleeves section, at right.

To sew the sleeveless version of the Carousel Dress with either the collar or dickey addition, start here.

Dress Facing without Sleeves

Follow the instructions for the Carousel Dress to completion, then begin here.

1. Sew buttons: using the All-in-One Facing Button Placement Guide, mark and sew buttons by hand or machine to dress facing around the neckline.

Skip to the Petal Collar or Dickey section as desired.

Dress Facing with Sleeves

The Front Neck Facing (1) replaces the Front Facing from the original Carousel Dress pattern. The Back Neck Facing (2) replaces the original pattern's Back Facing.

Follow the instructions for the Carousel Dress up to the Dress Facings section, then begin here.

1. Sew dress side seams: pin dress front unit to dress back unit at side seams, right sides (RS) together, matching notches. Stitch side seam and press seam allowances open.

2. Sew facing shoulder seams: pin Front Neck Facing (1) to Back Neck Facing (2) at shoulder seams, RS together, matching notches. Stitch and press seam allowances open.

3. Prepare to attach facing with clean-finish method: pin facing to dress around neckline, RS together. At zipper opening's top edge, working with dress back RS up, fold seam allowances as follows: on right half of opening (the underlap), fold both seam allowances to facing WS 1/2 in (1.3 cm). The facing seam allowance is nested inside the dress fabric seam allowance. On opening's left half (the overlap), fold facing seam allowance to WS 7/8 in (2.2 cm). Fold dress fabric seam allowance to WS 5/8 in (1.5 cm). Seam allowances nest together, with facing seam allowance 1/4 in (6 mm) wider. Folding seam allowances this way ensures facing is finished neatly around lapped zipper at neckline. **(Note: see the Carousel Dress video to watch this step in action!)**

4. Sew facing to dress: stitch around neckline, starting at one folded center back (CB) edge and ending at the other folded CB edge. Grade seam allowances so those on the dress are widest and those on the facing are narrower. Clip into curves every 1/2 in (1.3 cm).

5. Understitch neckline: from RS, with facing opened out from dress and seam allowances underneath, stitch the facing 1/8 in (3 mm) from the seamline, catching seam allowances in stitching. Start understitching at CB opening and end at opposite side. Turn facing to dress WS and press neckline edge, rolling seamline slightly so it is hidden inside the dress.

6. Sew buttons: using pattern markings as a placement guide, sew buttons by hand or machine to dress facing.

Short Sleeve

1. Gather sleeve cap: using a 4-mm to 5-mm stitch length, sew two lines of stitching on each Short Sleeve (3) cap between circles. Sew the first using 1/2-in (1.3 cm) seam allowance and the second using 1/4-in (6 mm) seam allowance. Pull up bobbin threads to gather.

2. Sew sleeve seam: pin sleeve RS together along underarm seam. Stitch. Press seam allowances open.

3. Set sleeves into dress: pin each sleeve to dress armhole RS together, matching underarm seams and notches. Distribute sleeve fullness evenly between notches. Stitch. Trim armhole seam allowances as one to 3/8 in (1 cm), then finish seams as desired. Press sleeve over seam allowances.

Skip to the Sleeve Facing for Cuffs section if you would like to use the removable Petal Cuff or French Cuff. Otherwise, continue to the next step for the Short Sleeve (no cuffs) version.

4. Hem sleeves: finish raw edge of sleeve hem by desired method. Fold and press the edge under 5/8 in (1.5 cm). Topstitch 1/2 in (1.3 cm) from fold. Press hem flat.

Skip to the Petal Collar or Dickey section as desired.

Sleeve Facing for Cuffs

1. Sew sleeve facing: pin Sleeve Hem Facing (4) RS together along underarm seam. Stitch. Press seam allowances open.

2. Sew facing to sleeve: pin sleeve hem facing to short sleeve, RS together and matching notches and underarm seam. Stitch. Grade seam allowances so those on the sleeve are widest and those on the facing are narrower. Clip into curves every 1/2 in (1.3 cm).

3. Understitch sleeve: from RS, with sleeve hem facing opened out from short sleeve and seam allowances underneath, stitch the facing 1/8 in (3 mm) from the seamline, catching seam allowances in stitching. Turn facing to sleeve WS and press sleeve

hem edge, rolling seamline slightly so it is hidden inside the dress.

4. Sew buttons: using pattern markings as a placement guide, sew buttons by hand or machine to sleeve hem facing.

Return to the Carousel Dress instructions to finish the dress, then continue to any of the following sections as desired.

Petal Collar

1. Prepare petal collar sections: pin interfaced Petal Collar Front (5) to uninterfaced petal collar front, RS together. Repeat for Petal Collar Side (6) and Petal Collar Back (7).

2. Sew petal collar sections: stitch petal collar front along outer curved side, leaving notched edge open. Repeat for petal collar side and petal collar back pieces. Grade seam allowances so that interfaced seam allowance is slightly wider than uninterfaced seam allowance, trimming seam allowances to between 1/8 in and 1/4 in (3 mm and 6 mm).

3. Press and baste petal collar sections: Turn collar sections RS out, using a pair of serger tweezers or a point turner from WS to push seams completely to edge of collar for a crisp look. Press collar piece flat, rolling seamline slightly to WS so it is hidden on the uninterfaced collar side. Repeat for petal collar side and petal collar back pieces. Baste each petal along notched edge with a 1/2-in (1.3 cm) seam allowance.

4. Assemble collar facing: pin interfaced side of petal collar sections to RS of interfaced Petal Collar Facing (8), matching notches and circles. Collar pieces will meet each other at center front (CF) and end at the back neckline, with petal collar side sections closest to the facing and laying underneath petal collar front and petal collar back sections. Baste collar in place. Pin uninterfaced side of petal collar facing on top, sandwiching the collar between the facing pieces.

5. Sew collar facing: stitch along three sides, leaving the long unnotched edge open, pivoting at corners. Clip into curves. Trim points close to stitching and grade seam allowances so that interfaced seam allowance is slightly wider than uninterfaced seam allowance. Turn

facing RS out, making sure corners are sharp by using a point turner, knitting needle, or pin to gently poke or pull them out.

6. Understitch collar facing: with the facing opened out and the seam allowances underneath, carefully stitch interfaced petal collar facing from RS $\frac{1}{8}$ in (3 mm) from seamline on long edge only, catching seam allowances in stitching. Press collar flat, rolling facing to WS so it is hidden behind the collar. Stitch raw edges of facing together using a $\frac{1}{4}$ -in (6 mm) seam allowance and finish raw edges as desired.

7. Sew buttonholes: using pattern markings as a placement guide, sew buttonholes by machine to petal collar facing.

To wear your petal collar, button the petal collar facing into the dress and then fold the collar over the outside of the neckline.

Petal Cuff

1. Sew Petal Cuff (9): pin interfaced petal cuff to uninterfaced petal cuff, RS together. Stitch petal cuff along curved side, leaving notched edge open. Grade seam allowances so that interfaced seam allowance is slightly wider than uninterfaced seam allowance. Turn cuff sections RS out.

2. Understitch petal cuffs: with the cuffs opened out and the seam allowances underneath, carefully stitch uninterfaced petal cuff from RS $\frac{1}{8}$ in (3 mm) from seamline, catching seam allowances in stitching. Press cuff flat, rolling seamline slightly to WS so it is hidden on the uninterfaced cuff side.

3. Sew facing underarm seam: pin interfaced Petal Cuff Facings (10) RS together along underarm seam, matching notches. Stitch. Press seam allowances open. Repeat for uninterfaced petal cuff facings.

4. Sew petal cuff facing: pin petal cuff with interfaced side next to RS of interfaced petal cuff facing, matching notch to underarm seam and overlapping petal cuff at circles. Be sure to overlap the petal cuff in opposite directions for each sleeve. Baste cuff in place. Pin uninterfaced side of petal cuff facing on top, sandwiching the petal cuff between the facing pieces. Stitch along the notched edge. Grade seam allowances

so that interfaced seam allowance is slightly wider than uninterfaced seam allowance.

5. Understitch petal cuff facing: with the facing opened out from the cuff and the seam allowances underneath, carefully stitch interfaced petal cuff facing from RS $\frac{1}{8}$ in (3 mm) from seamline, catching seam allowances in stitching, and starting/stopping at corners as necessary. Press cuff flat, rolling facing to WS so it is hidden behind the cuff. Stitch raw edges of facing together using a $\frac{1}{4}$ -in (6 mm) seam allowance and finish raw edges as desired.

6. Sew buttonholes: using pattern markings as a placement guide, sew buttonholes by machine to petal cuff facing.

To wear your petal cuffs, button the petal cuff facing into the sleeve and then fold the cuff over the outside of the sleeve hem.

French Cuff

1. Sew French Cuff (11): pin interfaced French cuff to uninterfaced French cuff, RS together. Stitch along three sides, pivoting at corners and leaving notched edge open. Clip corners and grade seam allowances so that interfaced seam allowance is slightly wider than uninterfaced seam allowance. Turn cuff RS out, making sure corners are sharp by using a point turner, knitting needle, or pin to gently poke or pull them out.

2. Understitch French cuffs: with the uninterfaced French cuff opened out and the seam allowances underneath, carefully stitch uninterfaced French cuff facing from RS $\frac{1}{8}$ in (3 mm) from seamline, catching seam allowances in stitching and starting/stopping at corners as necessary. Press cuff flat, rolling facing to WS so it is hidden behind the cuff. Press cuff again at fold line. Finish raw edge of facing together as one unit.

3. Sew buttonholes: using pattern markings as a placement guide, sew buttonholes by machine to French cuff.

4. Sew French cuff buttons: using pattern markings as a placement guide, sew buttons by hand or machine through all layers on both ends of each cuff.

To wear your French cuffs, button them into the sleeve and fold the cuff over the outside of the sleeve hem.

Dickey

Note: the dickey is fully lined. If you've ever sewn a sleeveless dress with an all-in-one facing (like the Carousel Dress), you'll notice that sewing the dickey is much like sewing a (very tiny) sleeveless dress with an all-in-one facing. Refer to the Carousel Dress video facing steps for visual help.

1. Staystitch neckline: on Dickey Fronts (12) and Dickey Backs (13), using a 1/2-in (1.3 cm) seam allowance, staystitch the neckline from each shoulder to CF/CB, backstitching at both ends to stabilize the neckline.

2. Sew shoulder seams: with RS together, pin dickey fronts to dickey backs at shoulders. Stitch and press seam allowances open.

3. Sew Dickey Collar (14): pin interfaced dickey collar to uninterfaced dickey collar, RS together. Stitch along three sides, leaving notched edge open, pivoting at corners. Clip curves. Trim points close to stitching and grade seam allowances so that interfaced seam allowance is slightly wider than uninterfaced seam allowance. Turn collar RS out, making sure corners are sharp by using a point turner, knitting needle, or pin to gently poke or pull them out.

4. Understitch dickey collar: with the uninterfaced dickey collar opened out and the seam allowances underneath, carefully stitch uninterfaced collar from RS 1/8 in (3 mm) from seamline, catching seam allowances in stitching, and starting/stopping at corners as necessary. Press collar flat, rolling seamline slightly to WS so it is hidden on the uninterfaced collar side.

5. Baste collar to dickey: pin collar interfaced side up to RS of dickey, matching notches to shoulder seams. Overlap CF points, making sure that the collar seam allowance excess is positioned within the dickey seam allowance. Baste collar in place. Pin second dickey unit on top, sandwiching the collar between the dickey units.

6. Sew collar to dickey: stitch along neckline edge. Clip into curves and grade seam allowances so outer dickey unit seam allowance is slightly wider than the inner dickey unit's. Grade the collar seam allowance to a width between the inner and outer dickey units.

7. Understitch neckline: from RS, with dickey inner unit opened out and seam allowances underneath,

stitch the dickey inner unit 1/8 in (3 mm) from the seamline, catching seam allowances in stitching. Turn dickey inner unit to WS and press neckline edge, rolling seamline slightly so it is hidden inside.

8. Finish armholes: turn dickey RS together again, with collar sandwiched inside. Pin armholes, matching notches and shoulder seams. Stitch around each armhole. Grade seam allowances so those on the outer dickey are the widest. Clip into armhole curve every 1/2 in (1.3 cm).

9. Understitch armholes: understitch each armhole as for neckline, sewing the front and back of the armhole separately. Break stitching and restart on the other side of the armhole when the shoulder gets too narrow to continue. Press armhole edges, rolling seamline to WS.

10. Sew back seams: with RS together, pin inner dickey to outer dickey at each CB seam, RS together. Stitch back seams, from neck edge to hem. Grade seam allowances and trim corners. Turn dickey back to WS and press.

11. Turn inner dickey to WS: turn the dickey RS out, reaching through each front shoulder and pulling dickey backs through. Press flat.

12. Sew side seams: flip dickey open at side seams and pin inner dickey front to inner dickey back and outer dickey front to outer dickey back at side seams, RS together. Stitch side seam, from inner dickey raw edge to outer dickey raw edge, and press seam allowances open. Turn dickey back to WS and press.

13. Finish the lower edge of the dickey: Stitch raw lower edges of dickey together using a 1/4-in (6 mm) seam allowance and finish raw edges as desired.

14. Sew buttonholes: following pattern markings, sew buttonholes by machine to dickey.

15. Sew buttons: sew buttons to the Carousel Dress side seams, front shoulder, and center back to match the dickey buttonholes.

To wear your dickey, button the dickey into the dress and then fold the collar over the outside of the neckline.

Enjoy your fun new SewRena Collection!

PATTERN PIECE LOCATION GUIDE

Here is a list to help you locate the pattern pieces on the letter-size tiled pages and A0 pattern sheets.
The tiled pieces and A0 sheets are included as separate pdf files as part of this digital pattern.

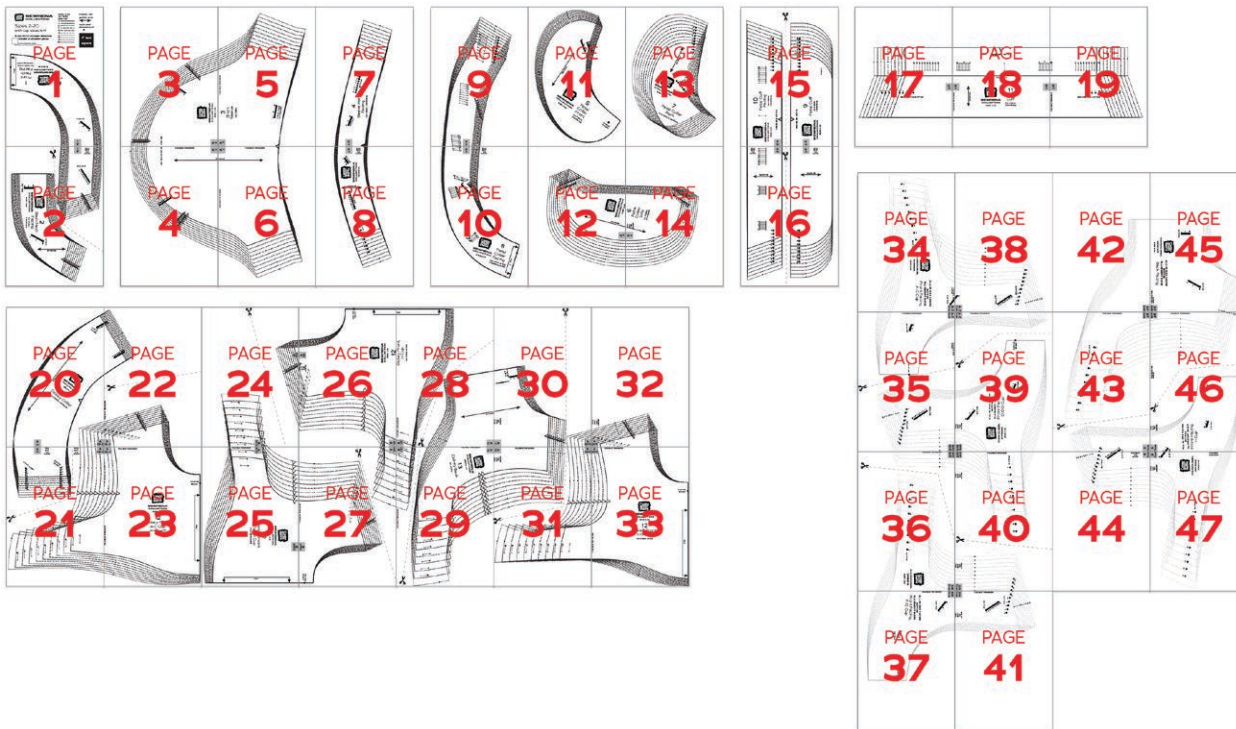
PC#	Piece Name	SIZES 2-20		SIZES 18-34	
		Tiled	A0	Tiled	A0
1	Front Neck Facing	1-2	1	1-2	1
2	Back Neck Facing	2	1	2	1
3	Short Sleeve	3-6	1	3-7	1
4	Sleeve Hem Facing	7-8	1	4-9	1
5	Petal Collar Front	11	1	11	1
6	Petal Collar Side	12, 14	1	12, 14	1
7	Petal Collar Back	13	2	13	2
8	Petal Collar Facing	9-10	1	8-10	1
9	Petal Cuff	15-16	1	15-17	1
10	Petal Cuff Facing	15-16	1	15-17	1
11	French Cuff	17-19	1	17-19	1
12	Dickey Front, A-C Cup	20-23	2	20-23	2
12	Dickey Front, D/DD Cup	24-25, 27	2	22-26	2
12	Dickey Front, F/G Cup	30-33	2	24-27, 30	2
12	Dickey Front, H Cup	24, 26-29	2	29-30, 32-33, 35	2
13	Dickey Back	28-31	2	32-36	2
14	Dickey Collar	20-22	1	28, 31, 34	1

All-in-One Facing Buttonhole Placement Guides

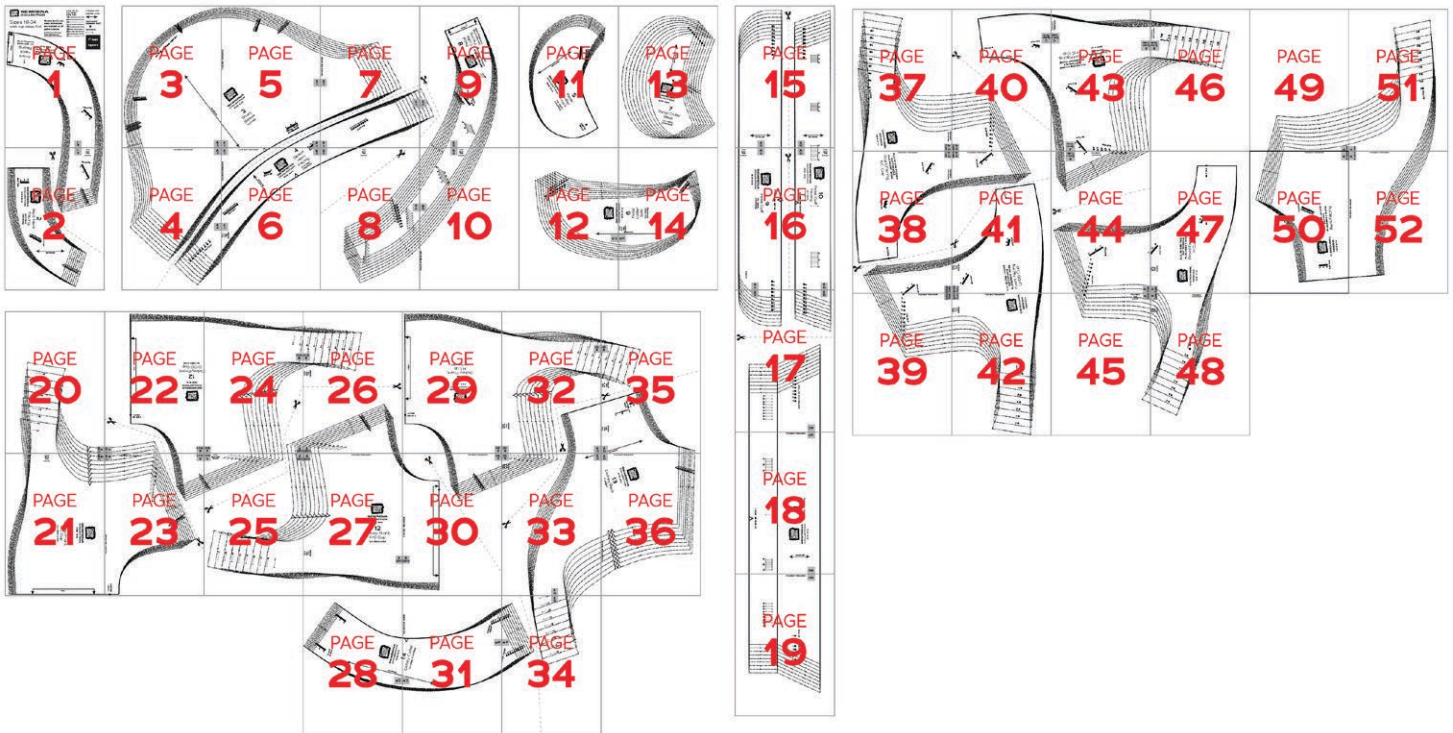
Front Facing, A-C Cup	34-35, 38-39	3	37-38, 40-41	3
Front Facing, D/DD Cup	35-36, 39-40	3	38-41	3
Front Facing, F/G Cup	36-37, 40-41	3	40, 43-44, 46	3
Front Facing, H Cup	43-44, 46-47	3	44-45, 47-48	3
Back Facing	42-43, 45-46	3	49-52	3

TILING MAPS

SIZES 2-20



SIZES 18-34



HOW TO USE THIS PATTERN

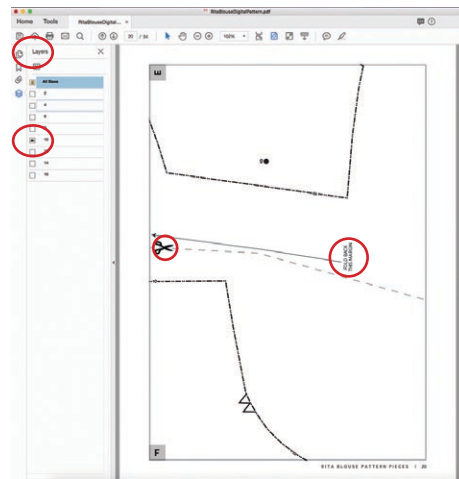
The pattern pieces are tiled so you can print them on Letter (8½" x 11") or A4 size paper. You can also send the A0 pattern sheet PDF to a local or online printer (like www.pdfplotting.com) to print on large sheets (36" x 48" for U.S. or A0 for international).

This pattern includes size layers. To get the best results, open either the Tiled or A0 pattern pieces PDF in Acrobat Reader.

Open the Layers Palette (View> Show/Hide>Navigation Panes>Layers) and hide all of the layer(s) except for the ones you want to print by clicking

on the eye icon.

The All Sizes layer has general pattern information and will always print.



WORKING WITH THE TILED PIECES

Go to File>Print and change the page range to the pages you need for the pieces you've chosen (see Pattern Pieces Printing Index). Make sure the Page Sizing settings to 100% or Actual Size. Test this after printing by measuring the 1" test box on the first page of the bodice pattern pieces.

Cut apart any pattern pieces that share a page by cutting on the gray long dashed lines. Then fold back the page margins on each page as directed.

Tape the pages together, butting up the folded page edges with the gray margin lines, matching up the letters in gray boxes.

MORE FROM GERTIE

On Instagram: Stay in the loop and get inspired.

On YouTube: Learn beginner and advanced sewing skills and techniques through my tutorials, watch episodes of my Gertie's World series, and join regular live streams.

On Patreon: Access monthly patterns and tutorial videos.

At CharmPatterns.com: Shop my sewing patterns and accessories.

