

# LOST MINIS OF PHANDELVER

---

THIEVES CAN'T GAMING

---

ADVENTURE MINIS: SET 1

Art by Zachary Stoppel  
Grunt Work by Bart Klick



---

49 UNIQUE PAPER MINIS  
EVERY MONSTER IN LMoP  
IMPORTANT NPCs  
PREMADE HERO MINIS

---

## *How to Use This PDF*

Every creature in the Lost Mines of Phandelver adventure is represented here as a paper miniature. If you're DMing the adventure as it is written, printing the entire file from page 3 onward (counting the cover) will yield every creature, NPC, and premade hero from the game.

There are several versions of this file; color with backgrounds, color without backgrounds, and linework only.

In all versions, cut the paper minis free from the sheet of paper first, fold them along the middle horizontal line, fold the round base (with bricks printed on it) upward, then glue the unprinted parts of the minis together. If your minis have backgrounds, you're done cutting. If your minis don't have backgrounds, you can cut along the artwork and create a silhouette of the figure after folding and gluing.

For the best results, print on 110 lb single-sided glossy cardstock. The artwork is designed to look best on glossy paper, and the other side of the cardstock makes the application of the glue easier. One drop of Elmer's glue or similar adhesives, or a thin application of a glue stick are

generally enough to make the minis stick together indefinitely. Too much glue can deform the minis, resulting in curves or wrinkles.

When using cardstock, weighted bottoms shouldn't be necessary for the minis to stand up and move easily across typical battle terrain. However, coins, wooden disks, plastic bases, or similar weights glued to the bottoms of the minis can make them much more resilient in game spaces with fans or exposure to wind.

For storage, the bases of the minis can be folded upright and the minis folded flat into a book or folder - though doing so will eventually necessitate a reprint, as the folds eventually wear thin.



## Heroes & Heroines

The Lost Mines of Phandelver comes with several premade characters. These paper minis represent the fighter, rogue, wizard, and cleric that come with the starter kit by default. Each has male and female variations, as well as a palette & hairstyle swap. The dwarf has two additional variations, because we wanted dwarven women to have a beard option.

### Elf Wizard



### Dwarf Cleric

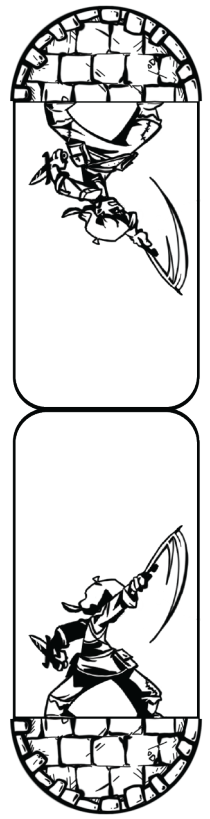
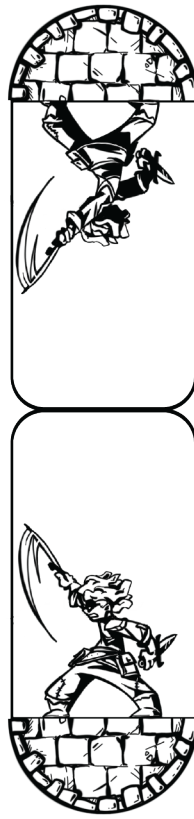
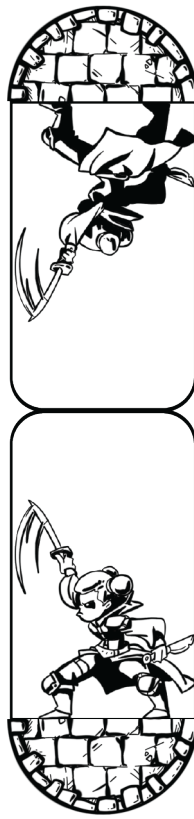
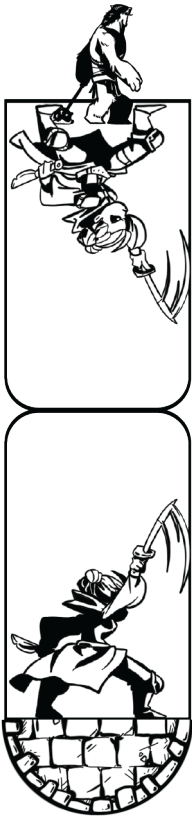


*Human  
Fighter*

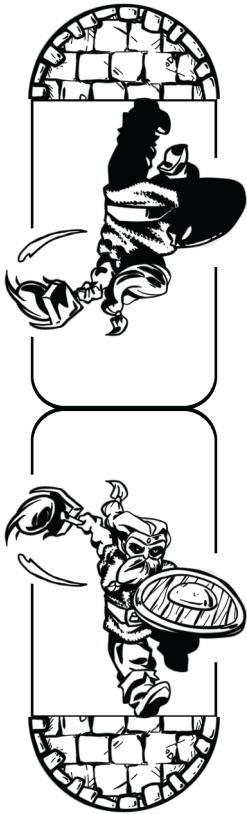


*Human  
Fighter*





*Halfling  
Rogue*



*Dwarf  
Cleric*

*Nilsa*



*Nars*



*Dendrar*



*Gundren*



*Reidoth*



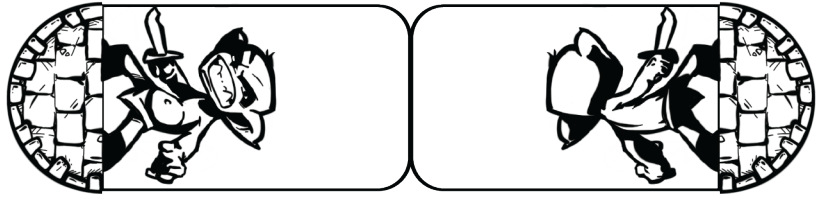
*Sildar*



*Banshee*



*Rat Familiar*



*Goblin*



*Bugbear*



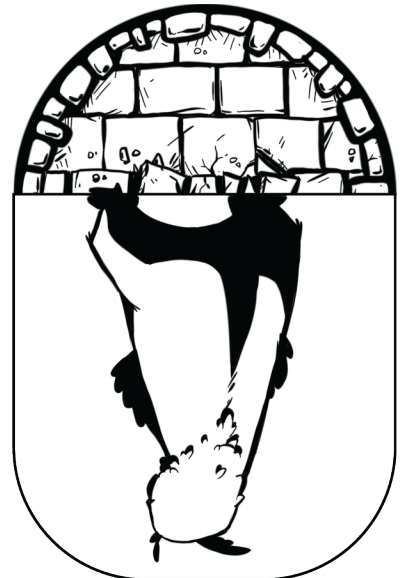
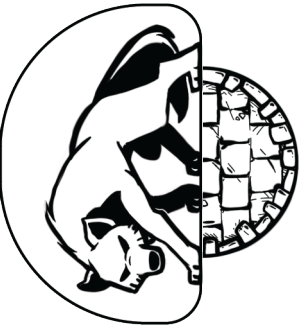
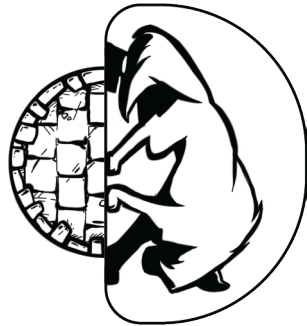




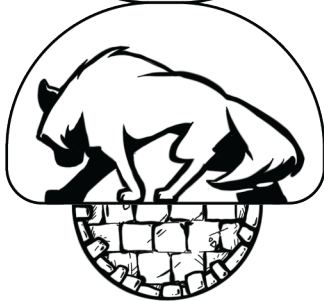
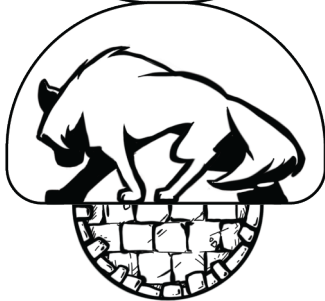
*Bugbear King*

*Clarg*

*Owlbear*



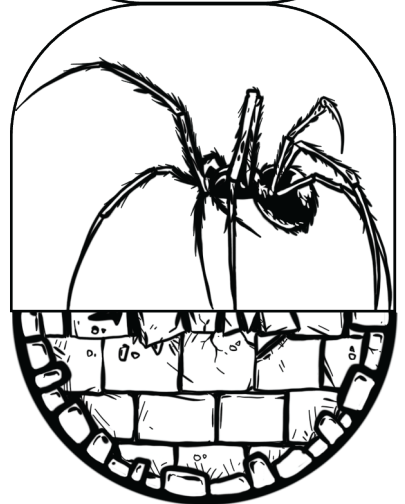
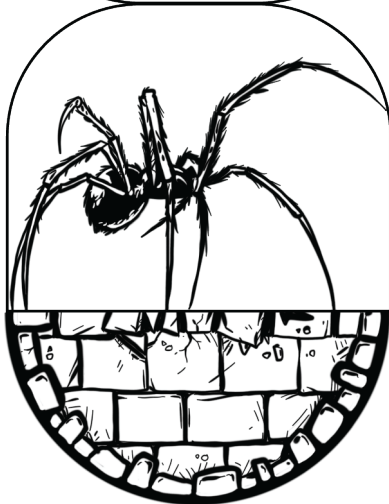
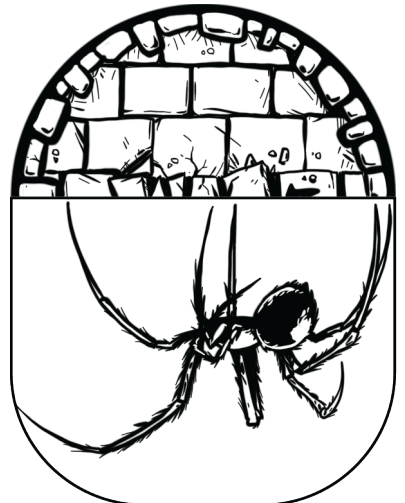
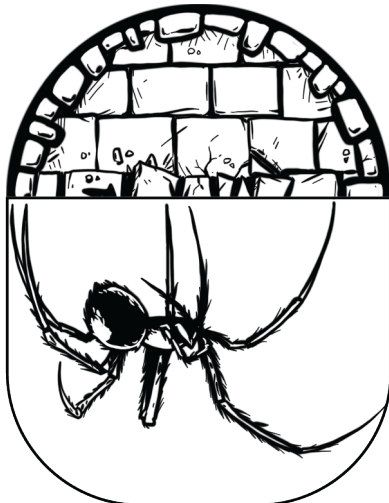
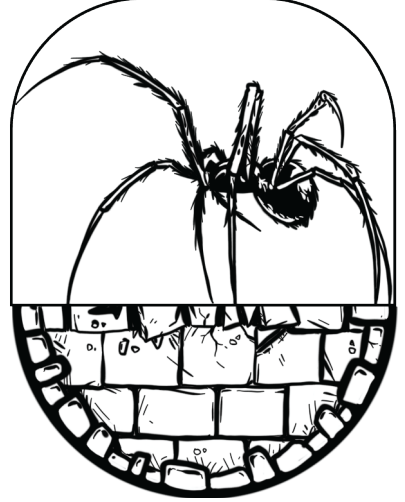
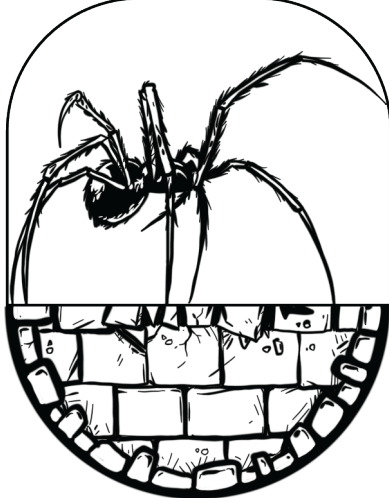
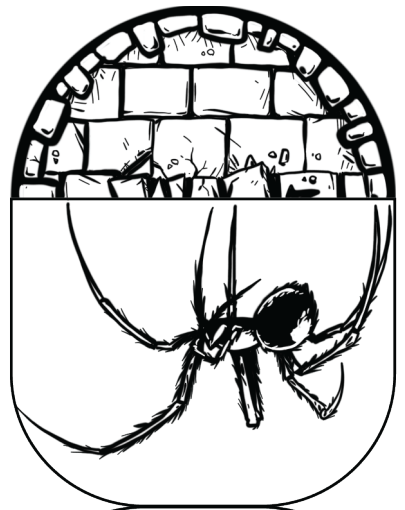
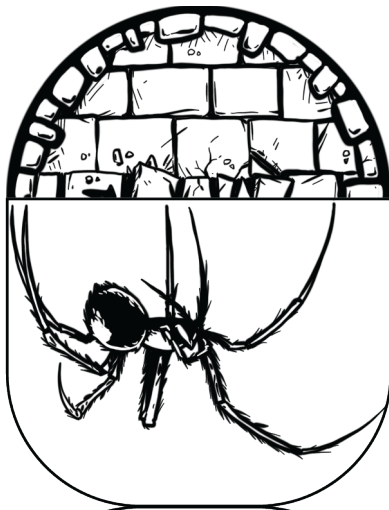
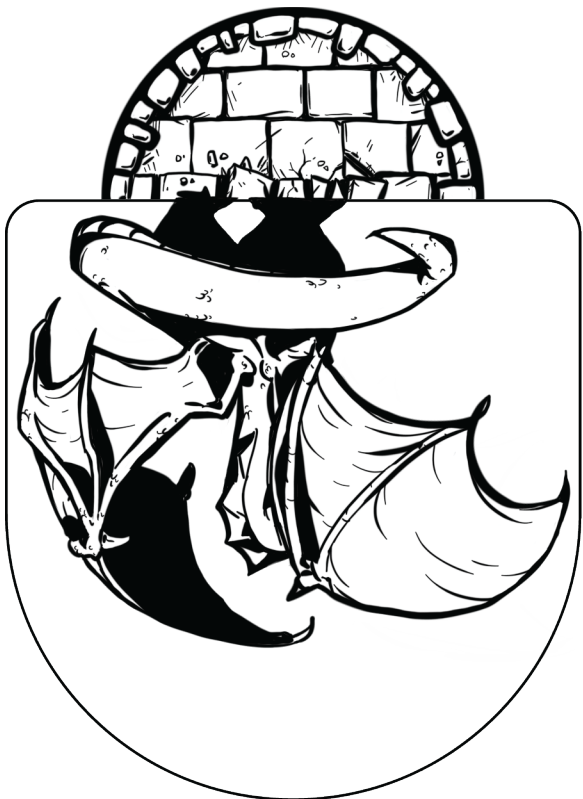
*Wolf*





*Stirge*



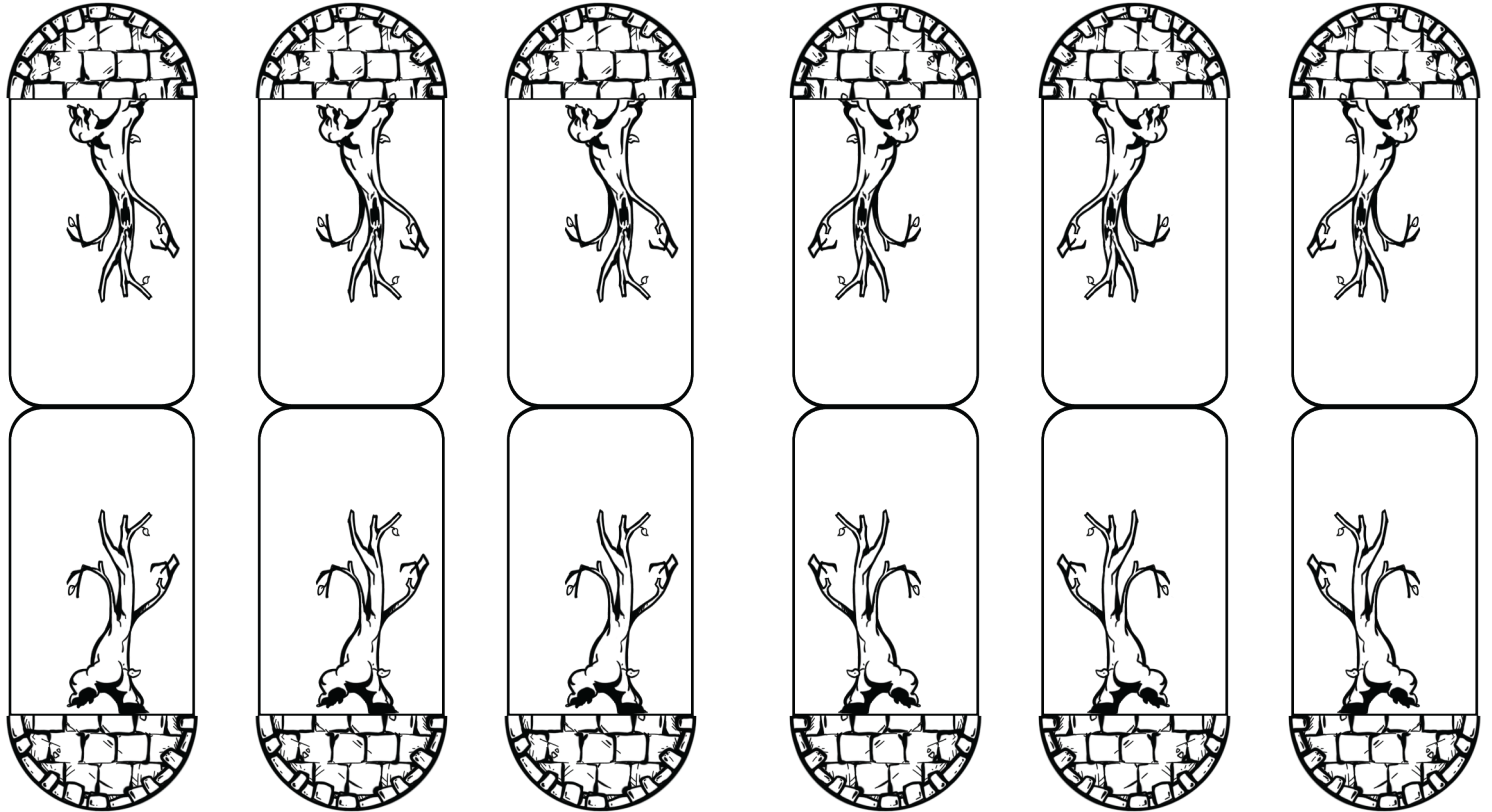
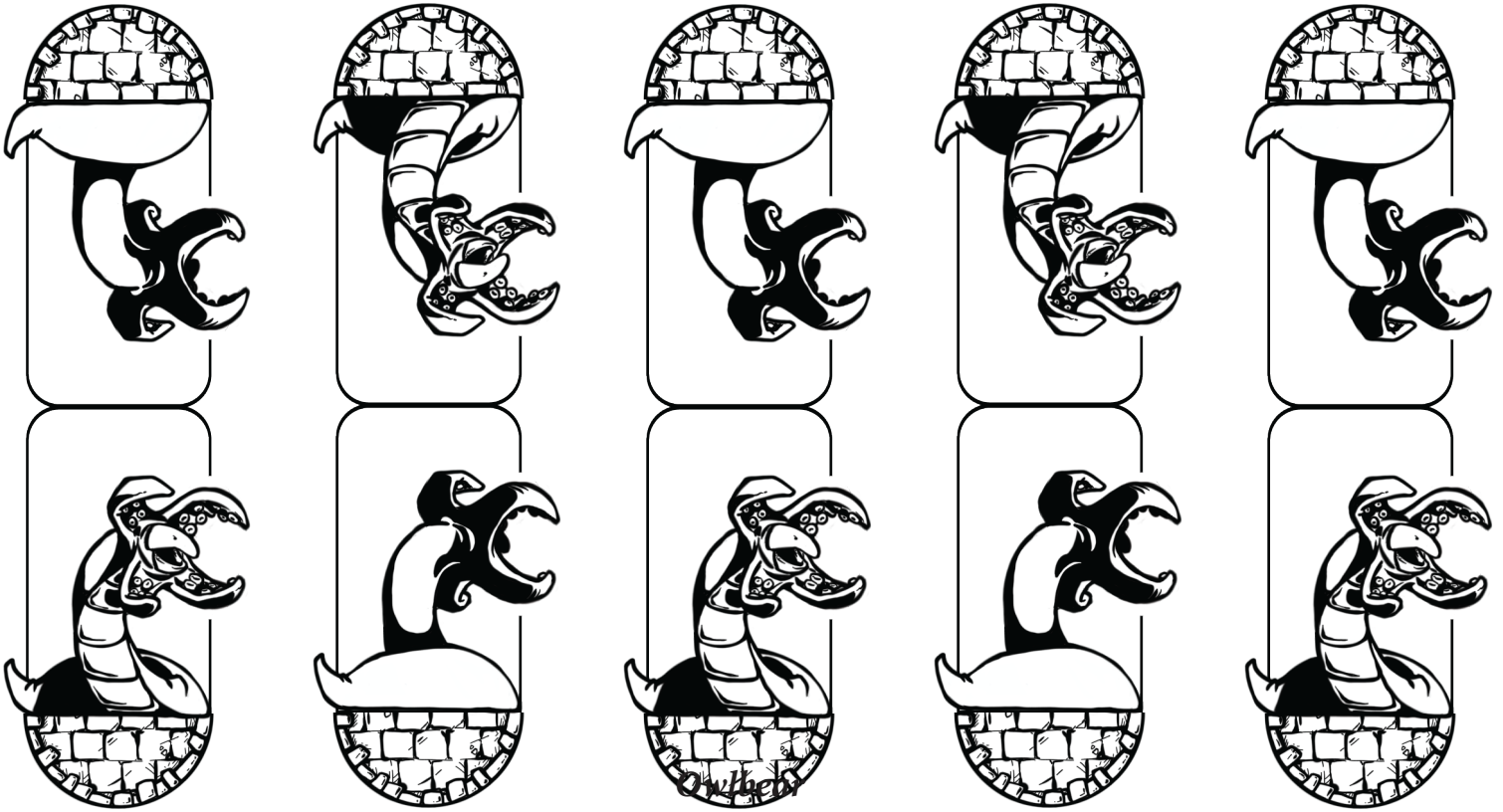


*Young Green  
Dragon*

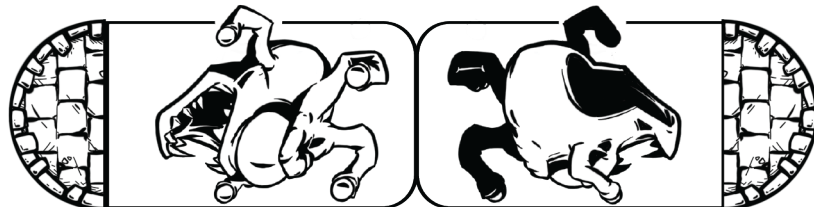
*Giant Spider*



*Grick*

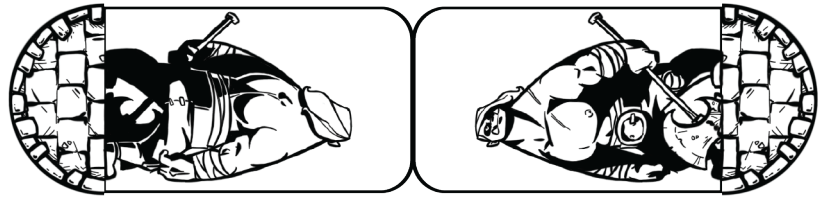


*Twig Blight*



*Spectator*

Orc



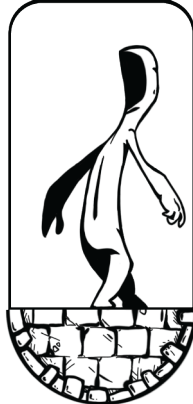
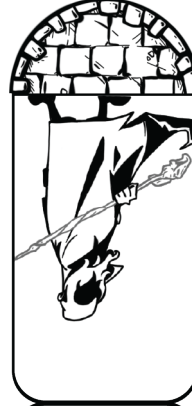
*Drow*

*Doppleganger*

*Kost*

*Glasstaff*

*Nezznar*

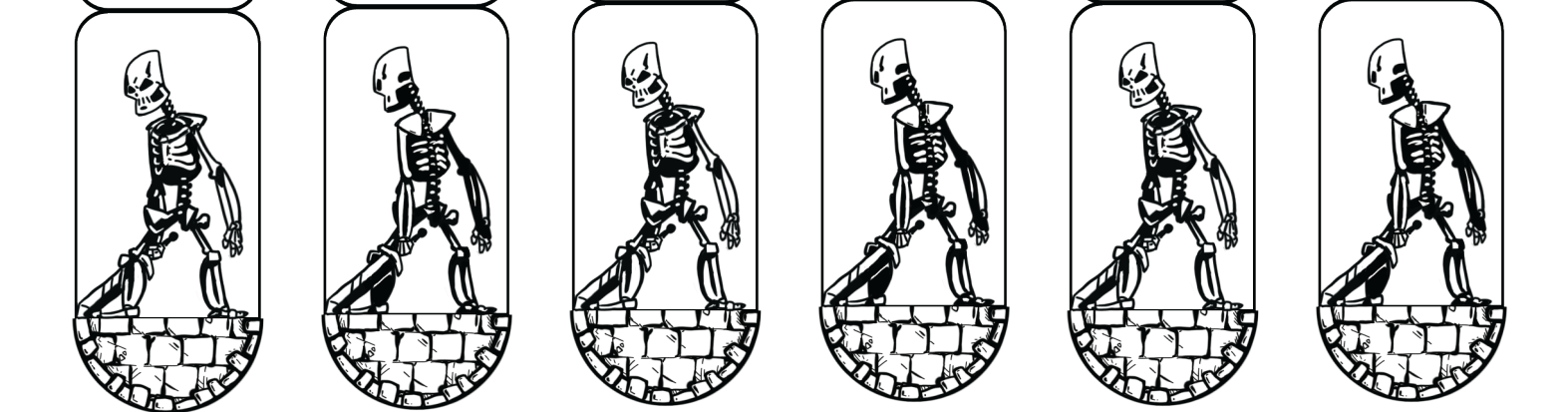
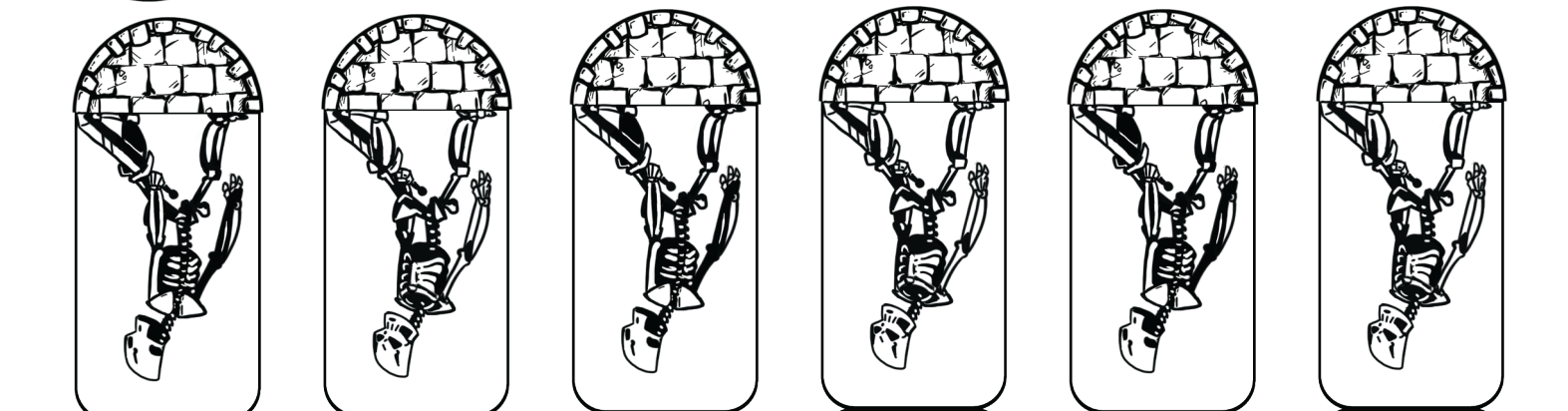
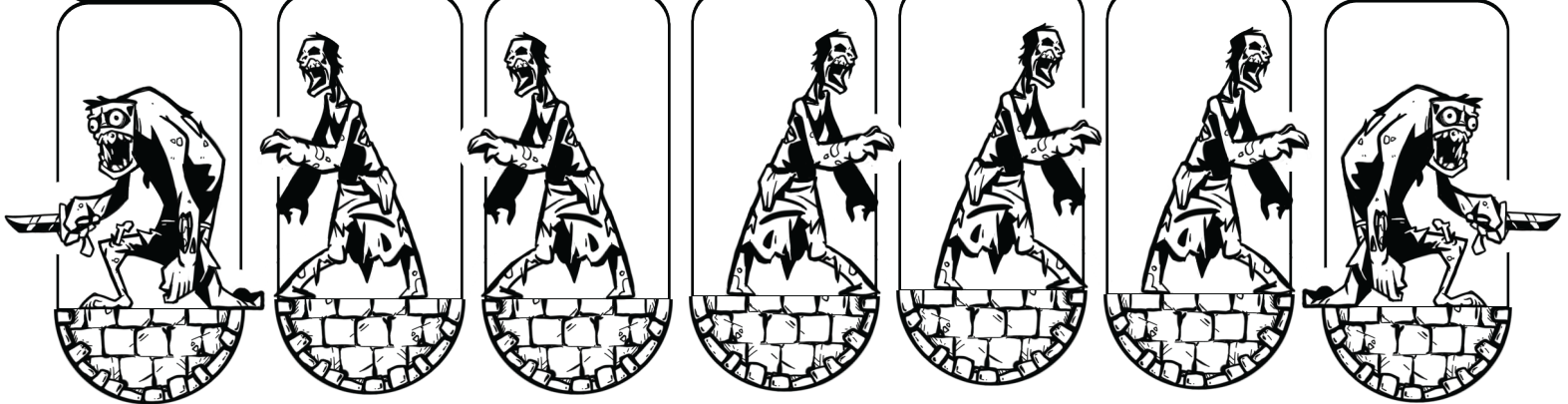
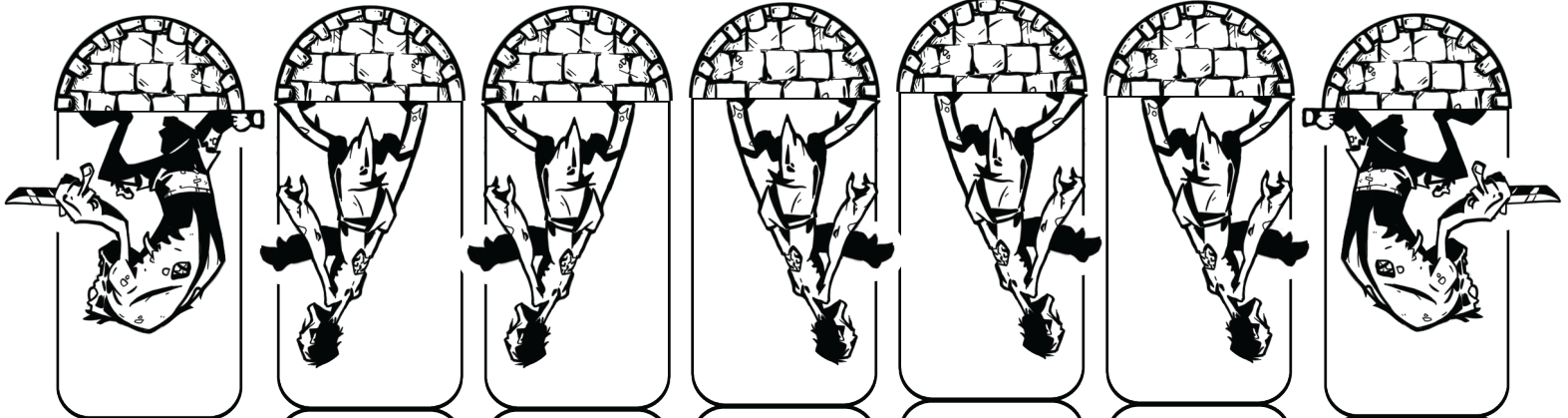






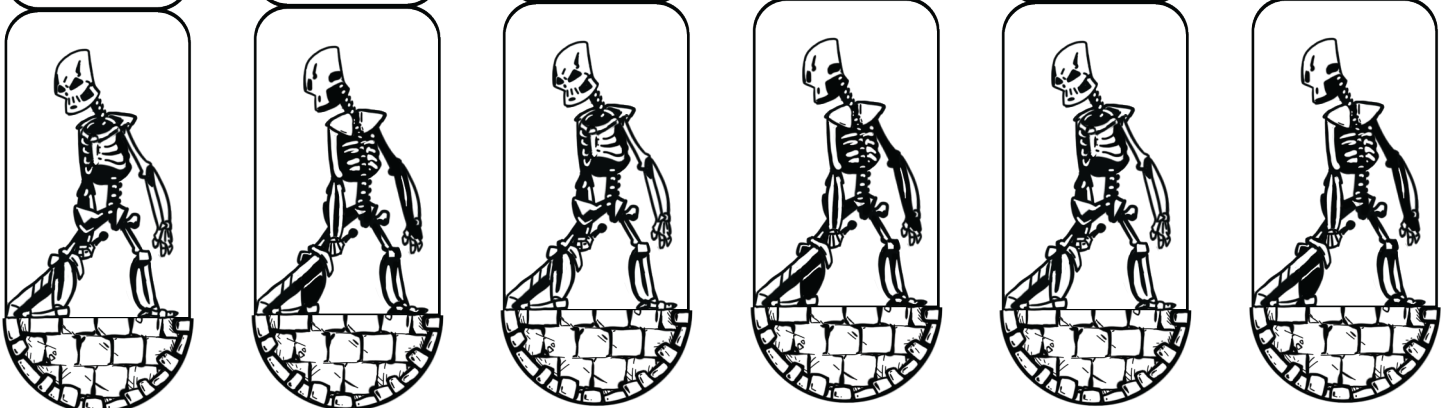
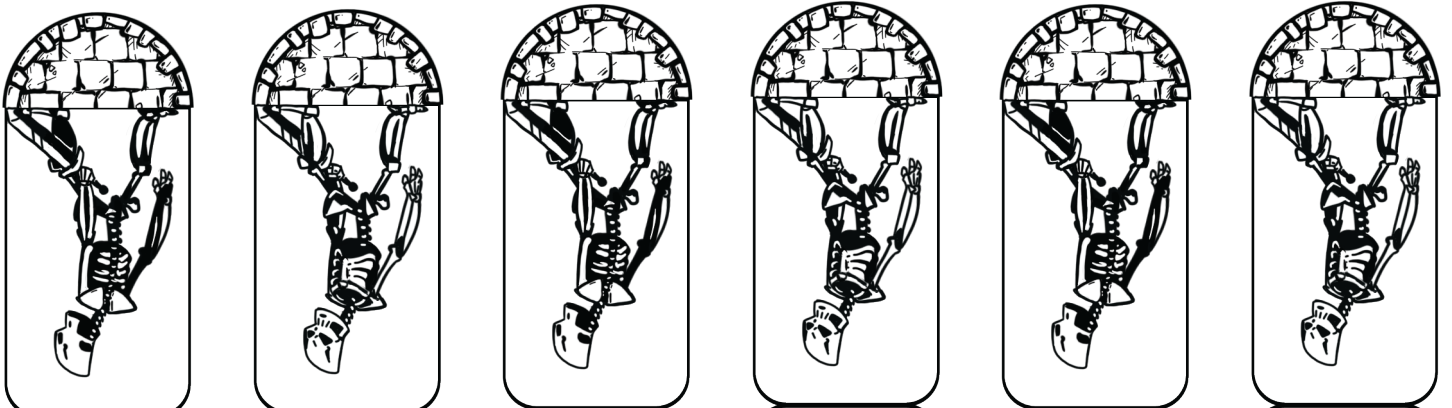
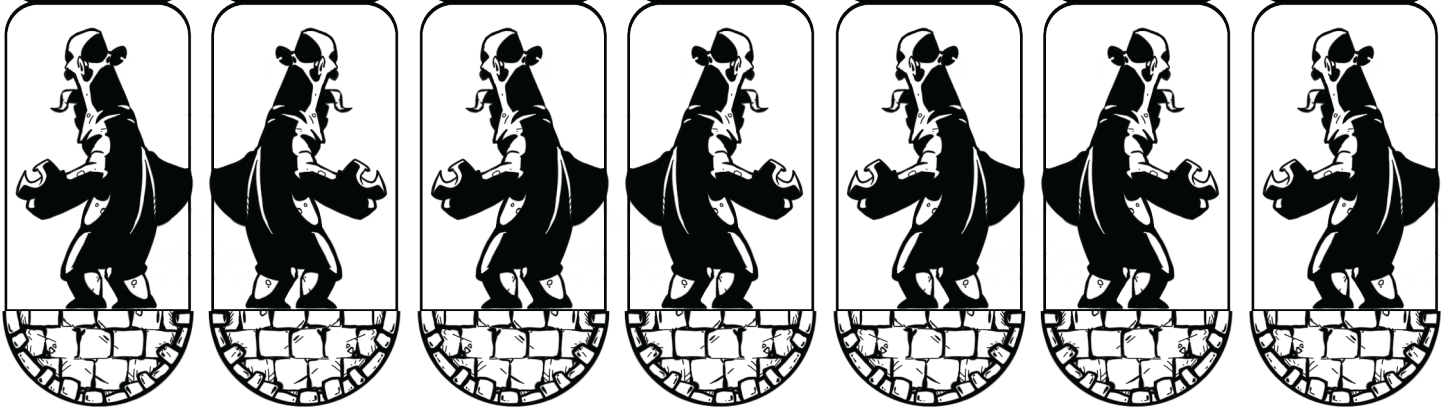
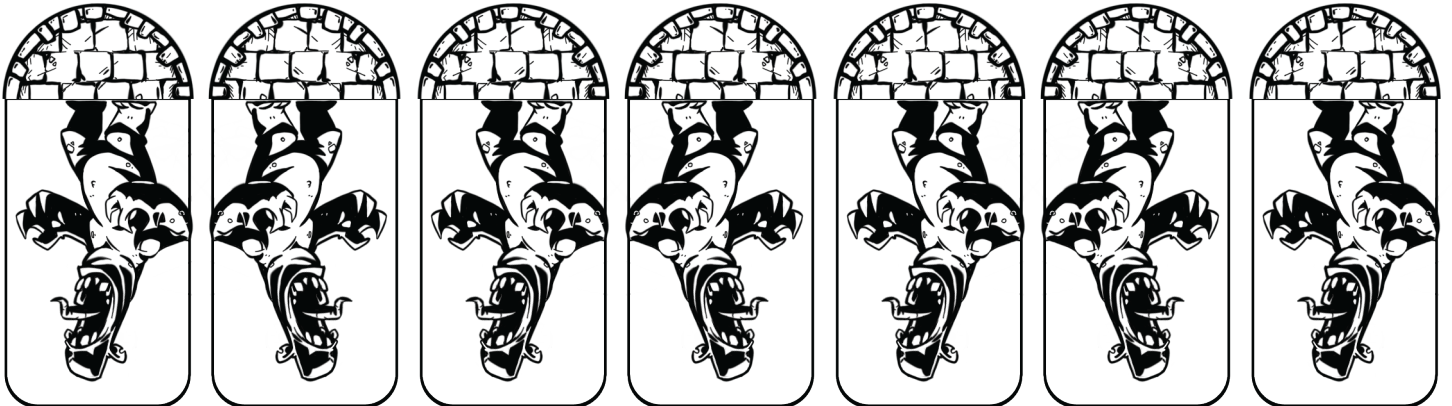


*Ash Zombie*



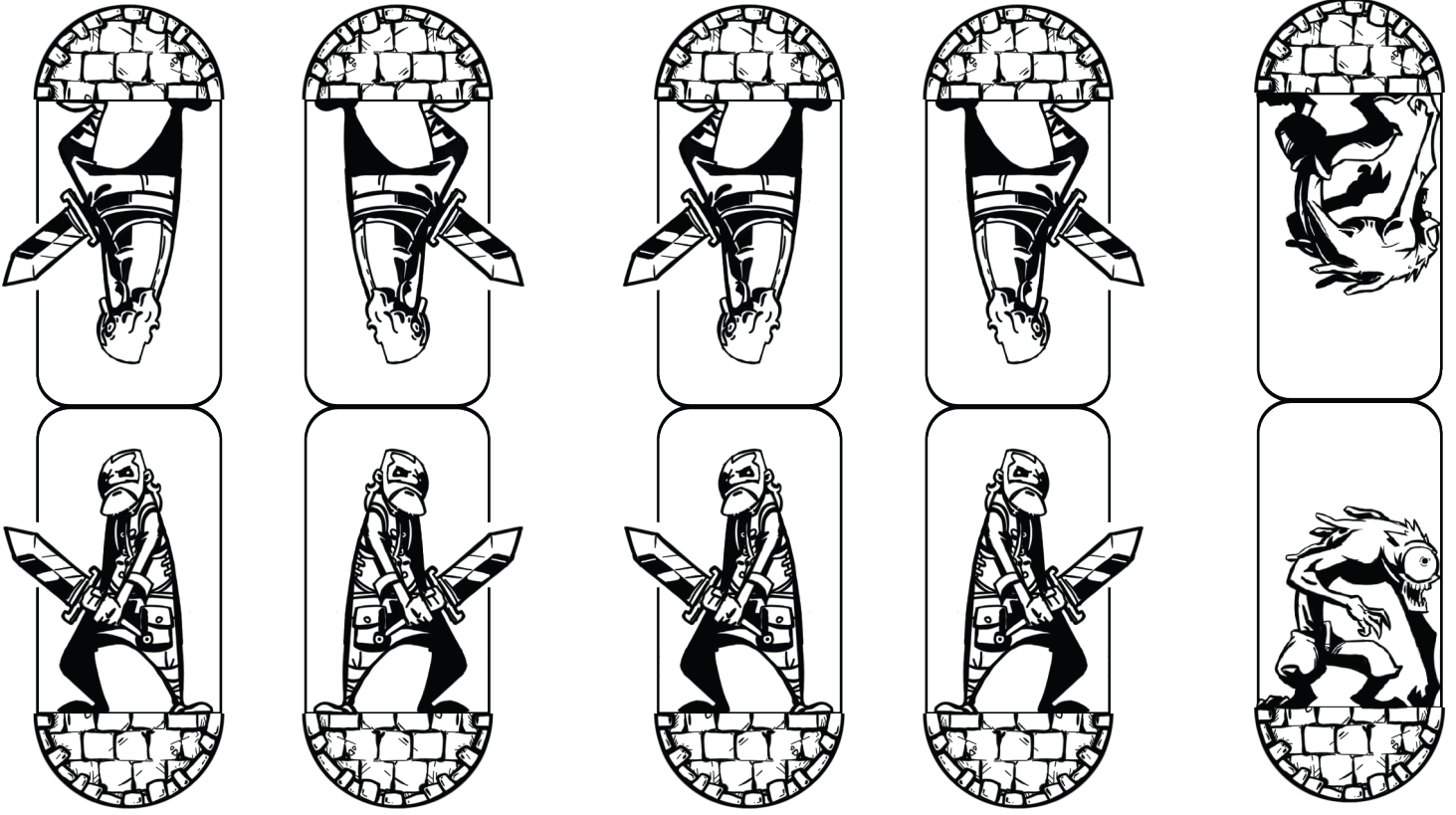
*Skeleton*

*Ghoul*



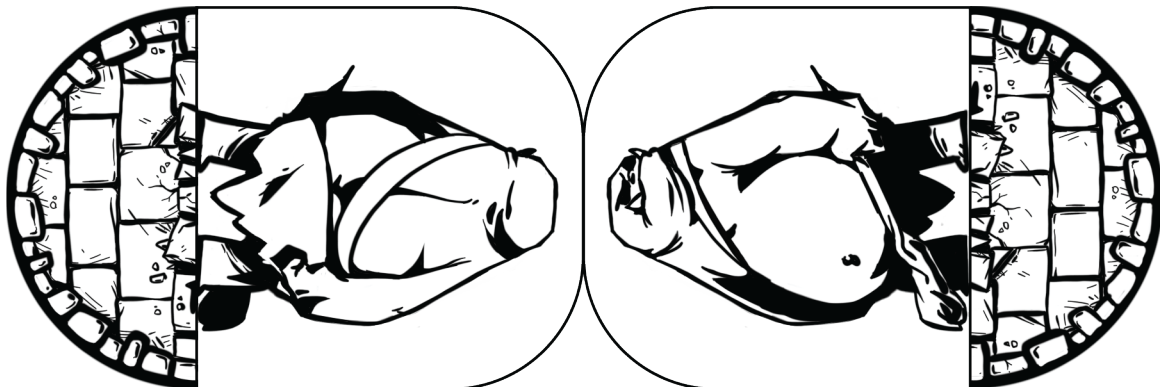
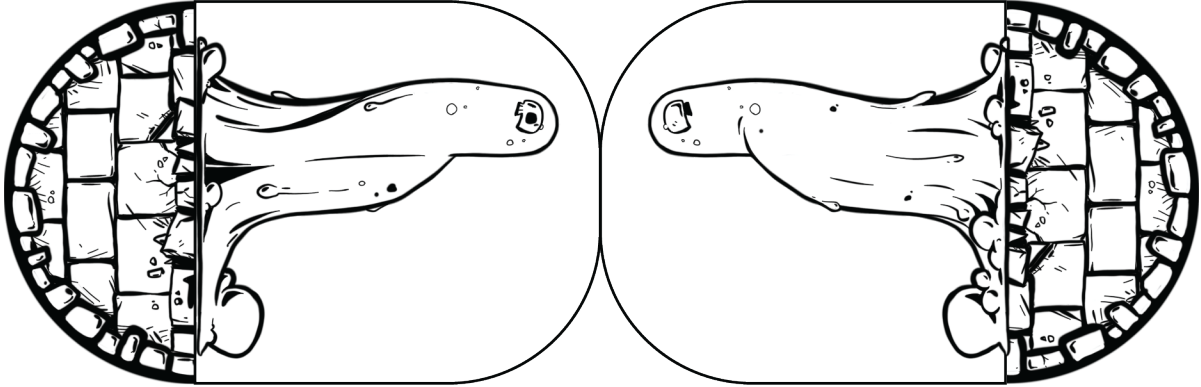






*Ruffian*

*Ochre Jelly*



*Ogre*