

GO





Green Herb
Hand Grenade



Red Herb



Green Herb

GO





GO

15 | ∞



Green Herb

GO



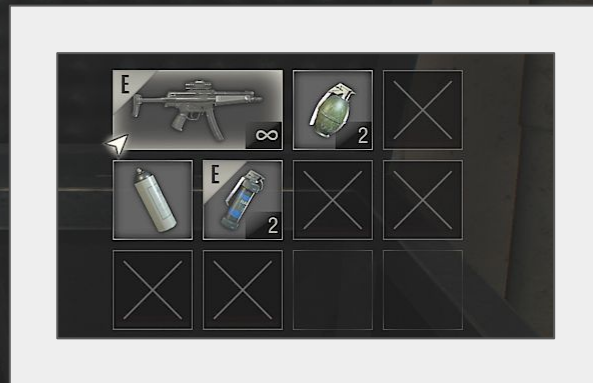


GO

GO



	Blue Herb	
	Red Herb	
	Green Herb	
	Ink Ribbon	4
	Red Herb	
	Key	
	Green Herb	
	Red Herb	
	Green Herb	
	Green Herb	



LE 5
Submachine Gun

32-shot capacity .380 ACP machine gun. Uses a closed bolt and has high accuracy.



Ink Ribbon (use - save)

PAUSE

00:20:46

Return to Game

Load Game

Records

Results

Costumes

Options

Quit



Time *

A police officer, seen from behind, is in a dimly lit industrial room. He wears a dark uniform with a vest that has a white cross on the back and the letters "R.P.D." below it. He is holding a handgun. In front of him is a metal ladder leaning against a piece of machinery. To the right, there are several large horizontal pipes on a blue metal rack. To the left, there is a doorway leading to a brightly lit hallway. The floor is dark with yellow safety markings.

LADDER



NO ENTRY

EXIT

Caution
Protrusion

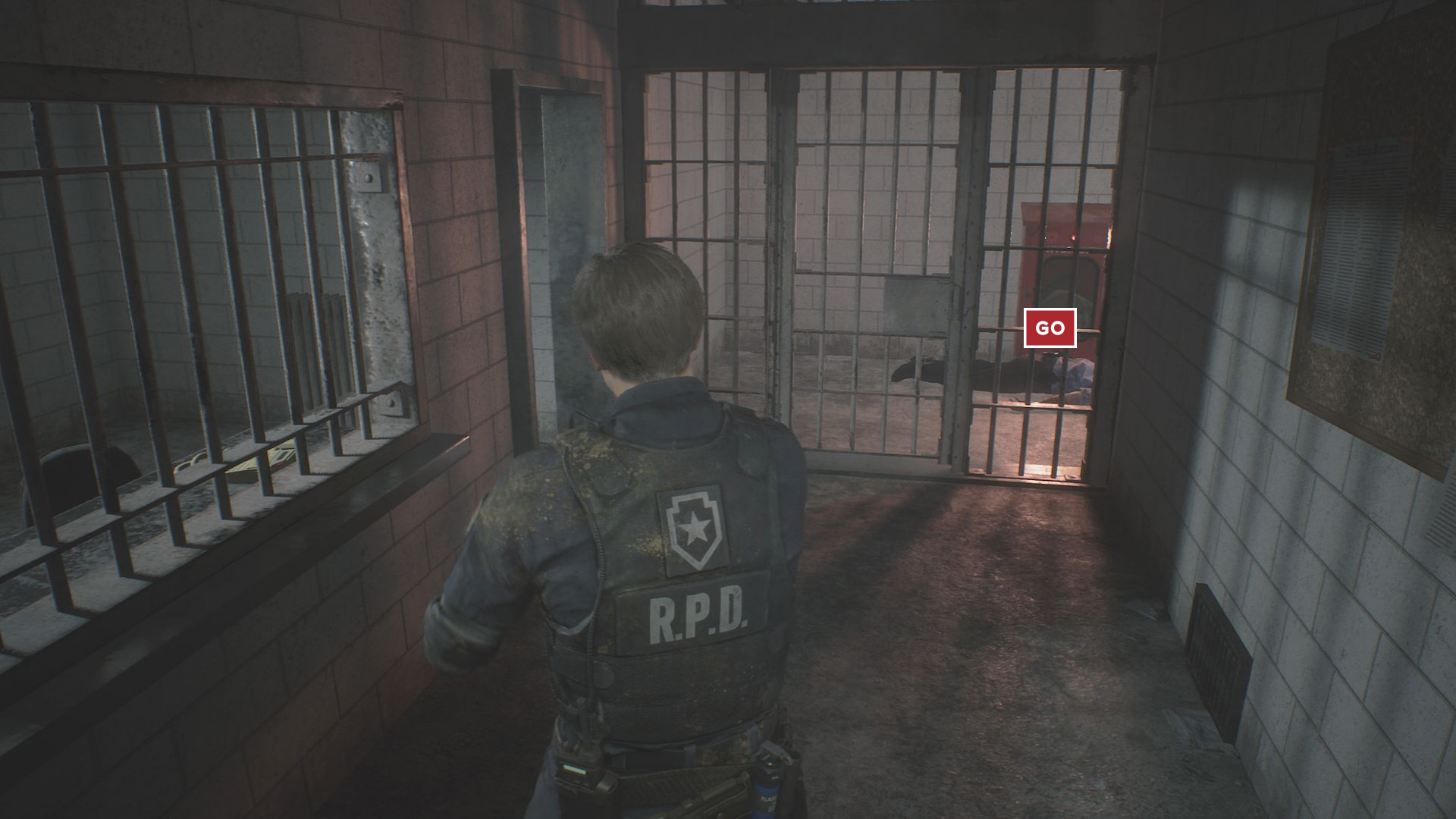
Sound
horn

R.P.D.

> Obtain the Parking Garage Key Card

GO

Hey! I'm not done talking to you!



GO

R.P.D.

SHOOT x1

28 | ∞



! * BON APPÉTIT - Shoot the grenade you fed to an enemy



GO



File * "Jail Power Panel" (read)
Square Crank



GO



GO

B1 B1

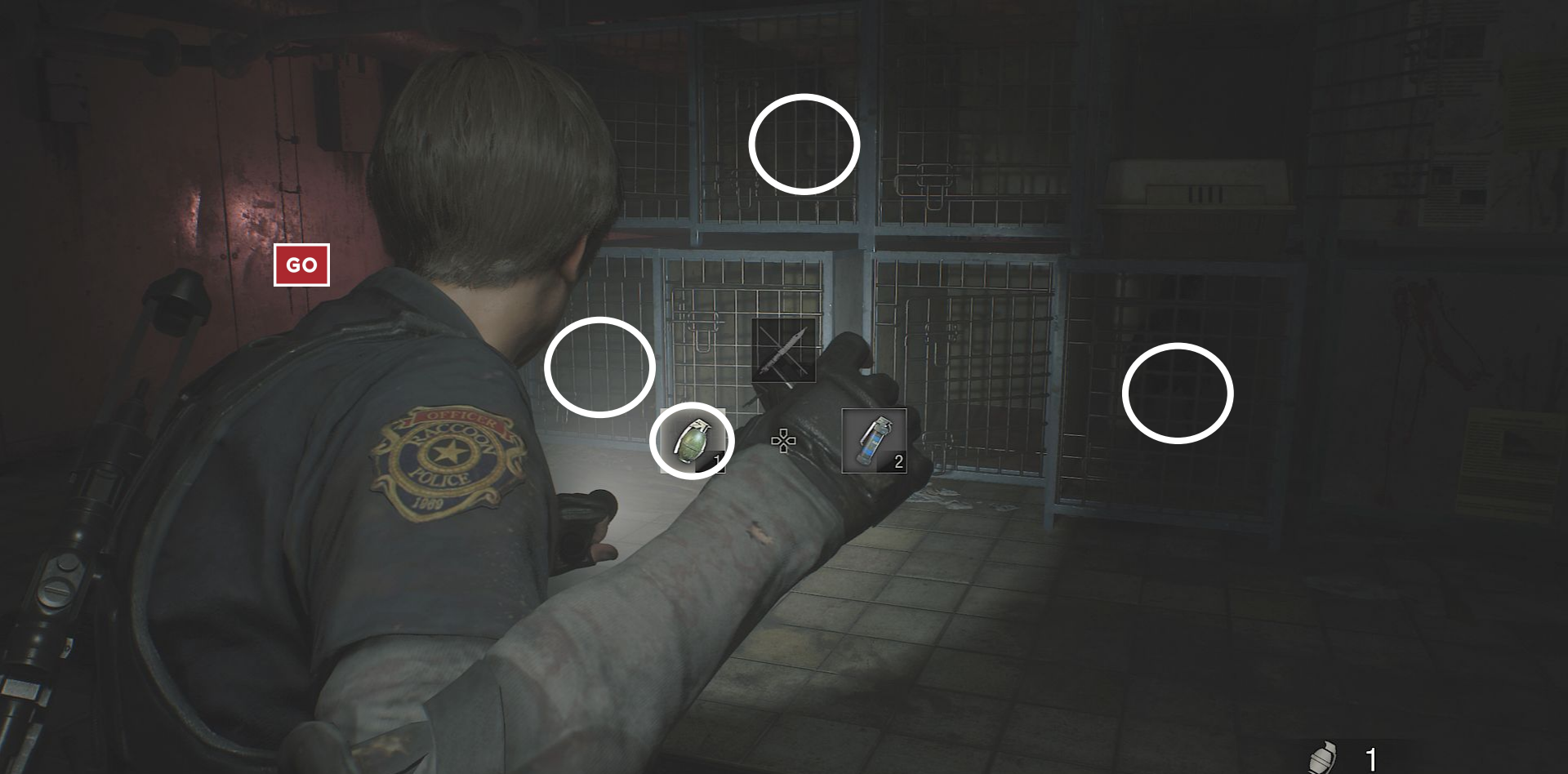
POLICE
FLEET



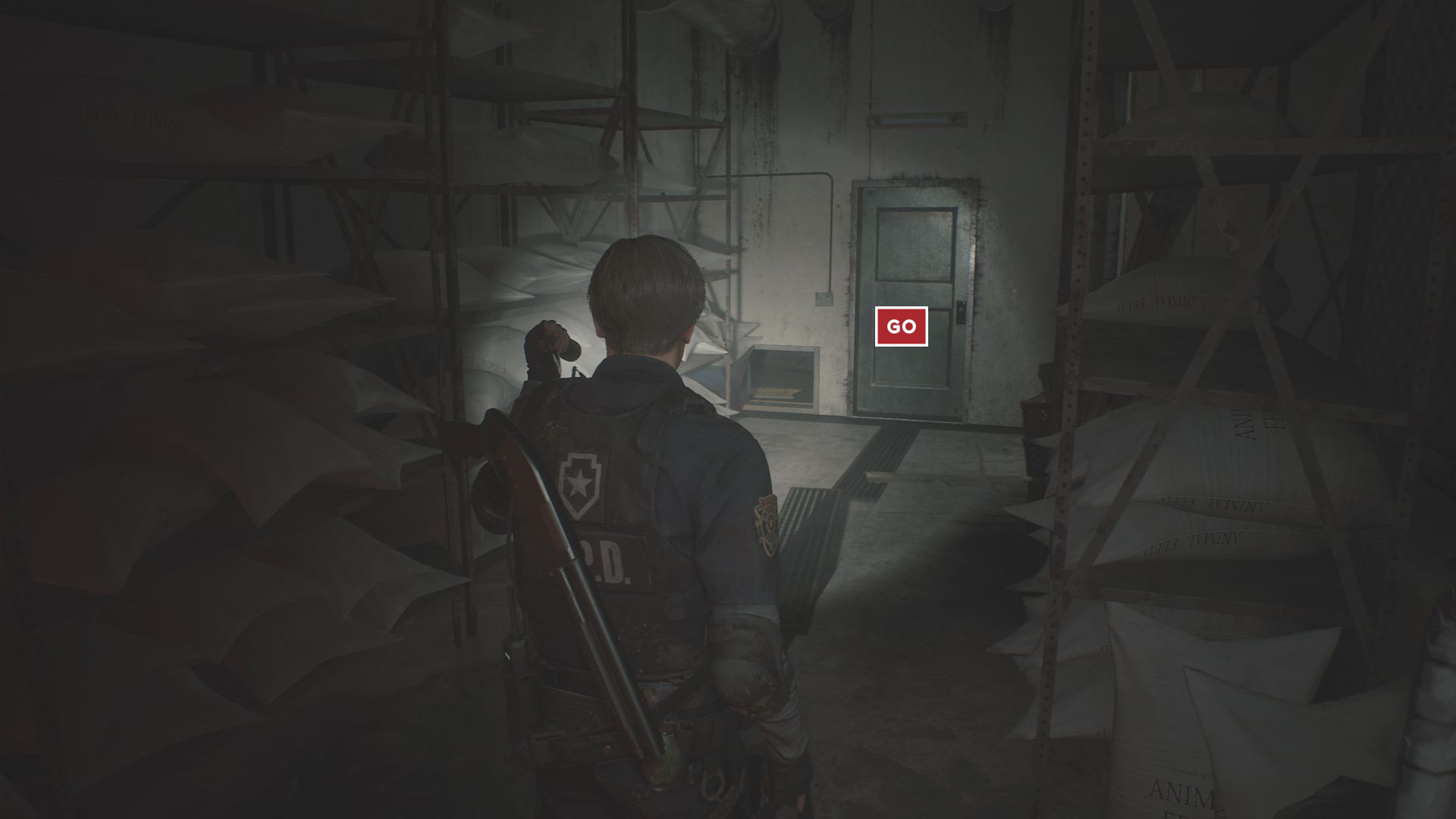
RIGHT



GO



! * ZOMBIE ROUNDUP - Kill 3 enemies at once with a sub-weapon



GO

A police officer is shown from behind, standing in a dark, industrial-looking room. The officer is wearing a dark uniform with a tactical vest that has a white shield with a star on the back and the letters 'P.D.' below it. A flashlight is held in the officer's right hand, casting a bright beam of light onto the wall ahead. In the center of the beam, a red square with the word 'GO' in white capital letters is overlaid on the image. The room has concrete walls and a dark door in the background. The overall atmosphere is dark and mysterious.

GO



Square Crank (use)

A police officer, seen from behind, stands in a dark, industrial-style hallway. He is wearing a dark uniform with a star emblem on his vest and "P.D." on his back. He is holding a flashlight that illuminates the wall to his left and a set of stairs ahead. A red square with the word "GO" in white is positioned in the air above the stairs. The environment is dimly lit, with a metallic door or panel visible on the right side of the frame.

GO



Boxed Electronic Part (examine) = Power Panel Part



Circuit (Red - Green - Green - Red)



! * LIKE SKEET SHOOTING - Shoot a zombie dog or a licker out of the air



Green Herb



WARNING: This area is restricted to authorized personnel only. All unauthorized personnel are prohibited from entering. Violation of this policy may result in disciplinary action.

15 | ∞



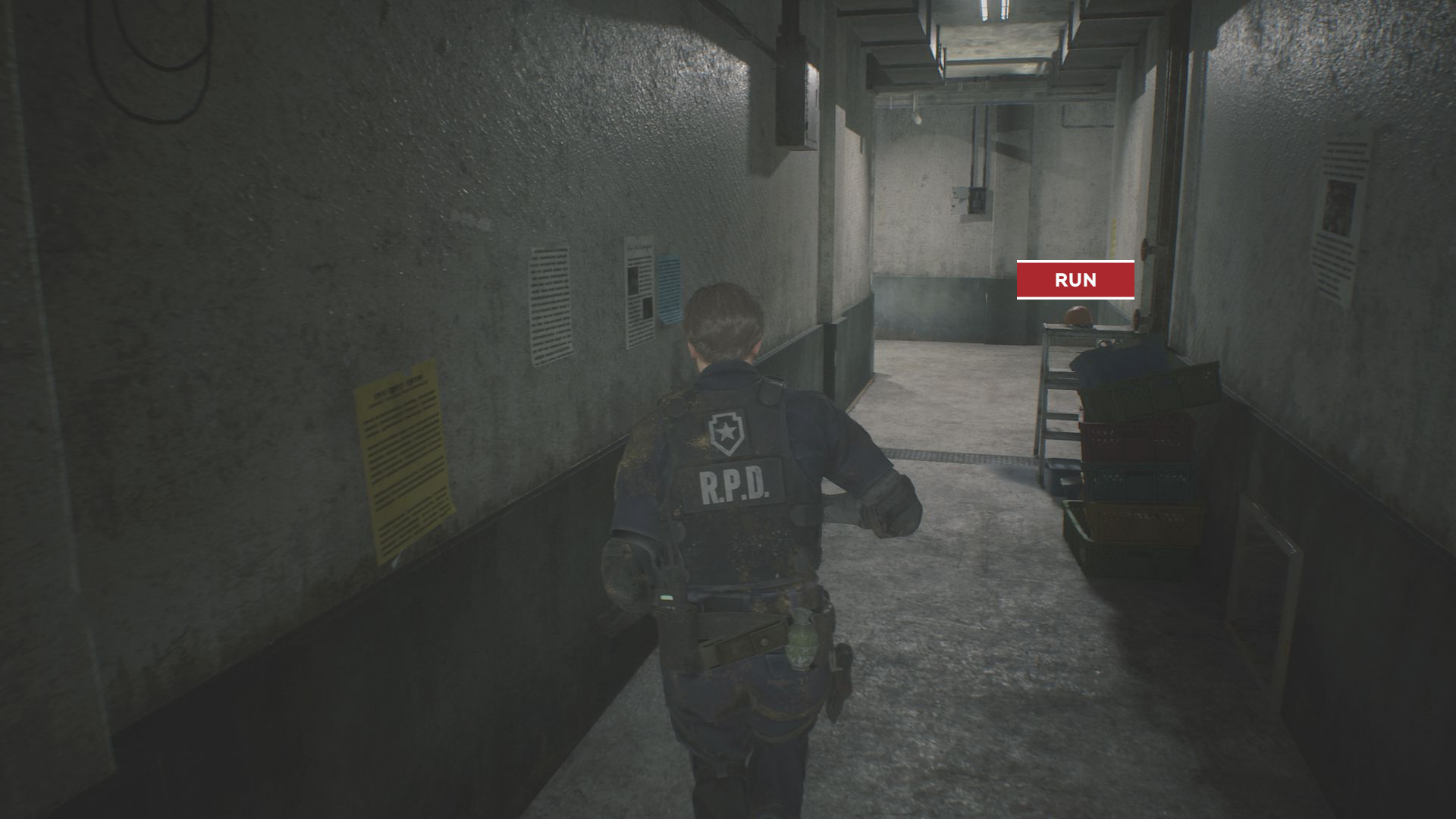
R.P.D.

R.P.D. BALLETT

3 | ∞

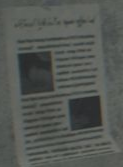


RUN



RUN

R.P.D.



RUN



EXIT

CLEANING
IN
PROGRESS

GO

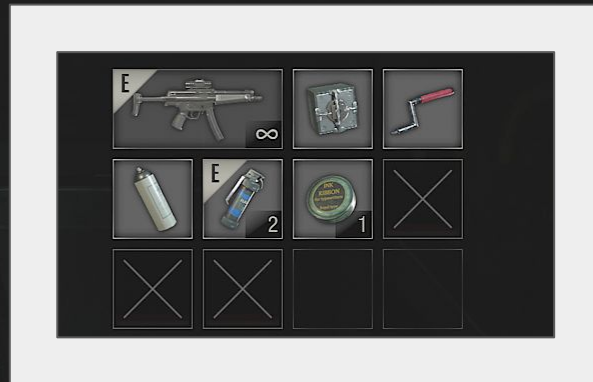
R.P.D.



GO

R.P.D.

	Red Herb	
	Green Herb	
	Ink Ribbon	3
	Red Herb	
	Key	
	Green Herb	
	Red Herb	
	Green Herb	
	Green Herb	
	Green Herb	



Ink Ribbon

Key Item

An ink ribbon.
Required when using a Typewriter.



Ink Ribbon (use - save)

PAUSE

00:25:56

Return to Game

Load Game

Records

Results

Costumes

Options

Quit

Time *

EXIT

GO

CLEANING
IN
PROGRESS

15 | ∞



GO

A police officer, seen from behind, is sitting at a desk in a dimly lit room. The officer's uniform features a star emblem on the back and a patch on the sleeve. The room has a tiled floor with a checkered pattern, a bulletin board, and a door with an "EXIT" sign above it. To the right, a body lies on the floor near a window with a large splatter of blood on the wall. A red box with the word "STAIRS" is overlaid on the scene.

STAIRS



Green Herb



WAITING ROOM

GO



Square Crank (use - discard)



GO



Flash Grenade



15 | ∞

Blue Herb



GO



Large Gear

GO





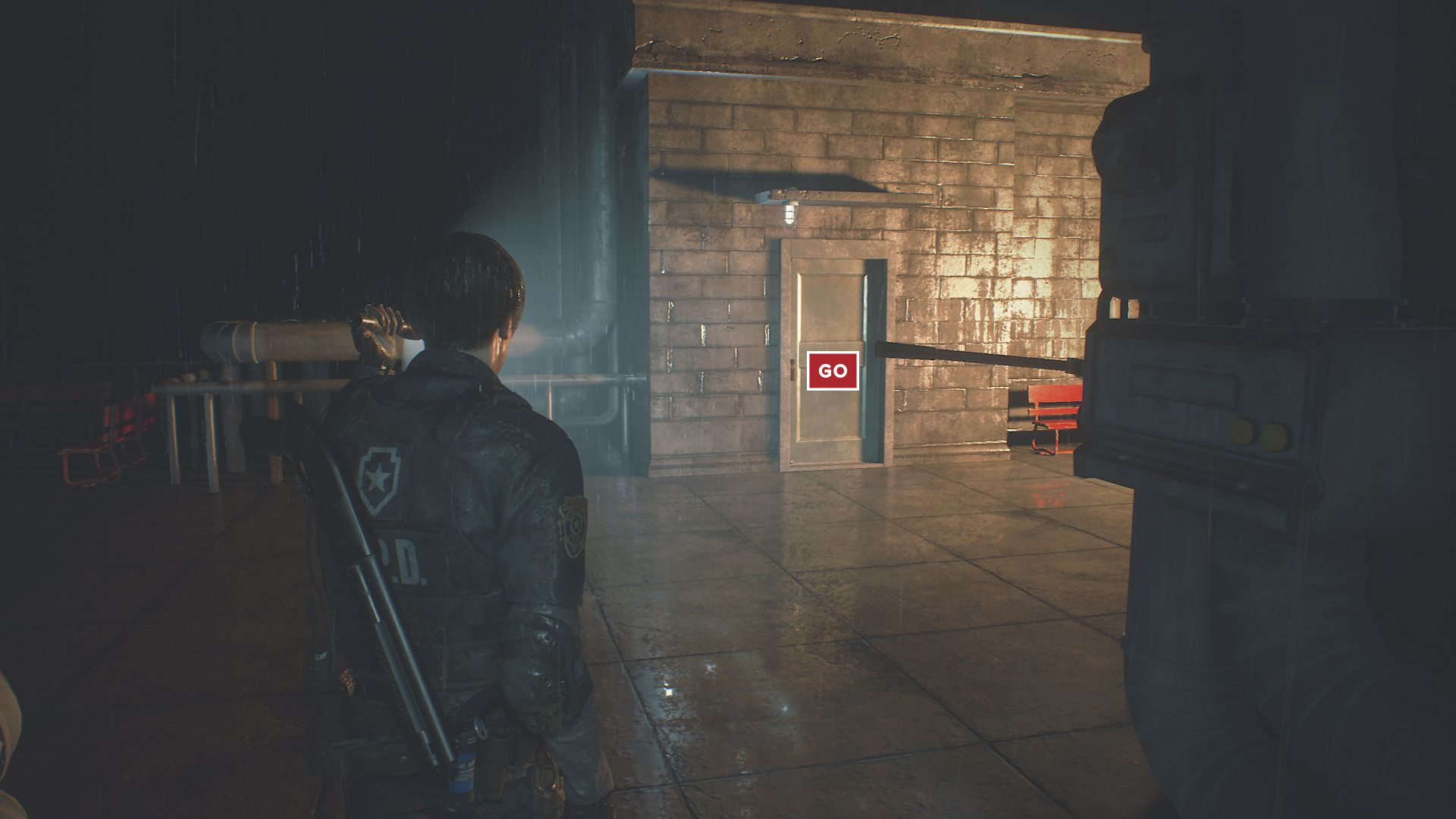
GO





LADDER

Blue Herb (combine with Green Herb) = Mix G+B



GO



Red Herb (combine with Mixed G+B) = Mixed G+R+B



GO



GO



Green Herb (combine with Blue Herb) = Mixed G+B



GO



Water Valve 01



GO



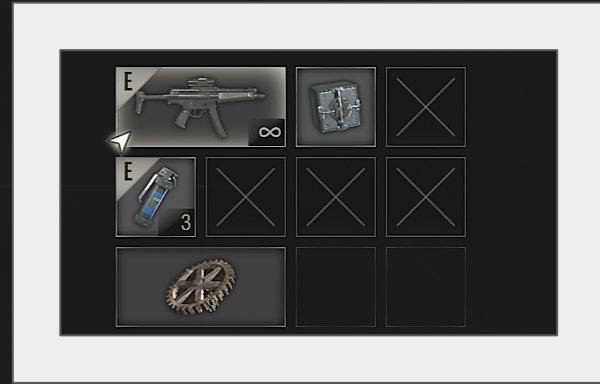
GO



GO



	Red Herb	
	Key	
	Green Herb	
	Green Herb	
	Red Herb	
	Green Herb	
	Mixed Herb (G+B)	
	Green Herb	
	Mixed Herb (G+R+B)	
	First Aid Spray	



LE 5
Submachine Gun

32-shot capacity .380 ACP machine gun. Uses a closed bolt and has high accuracy.



Ink Ribbon



Club Key
Ink Ribbon (use - save)

PAUSE

00:30:25

Return to Game

Load Game

Records

Results

Costumes

Options

Quit

Time *



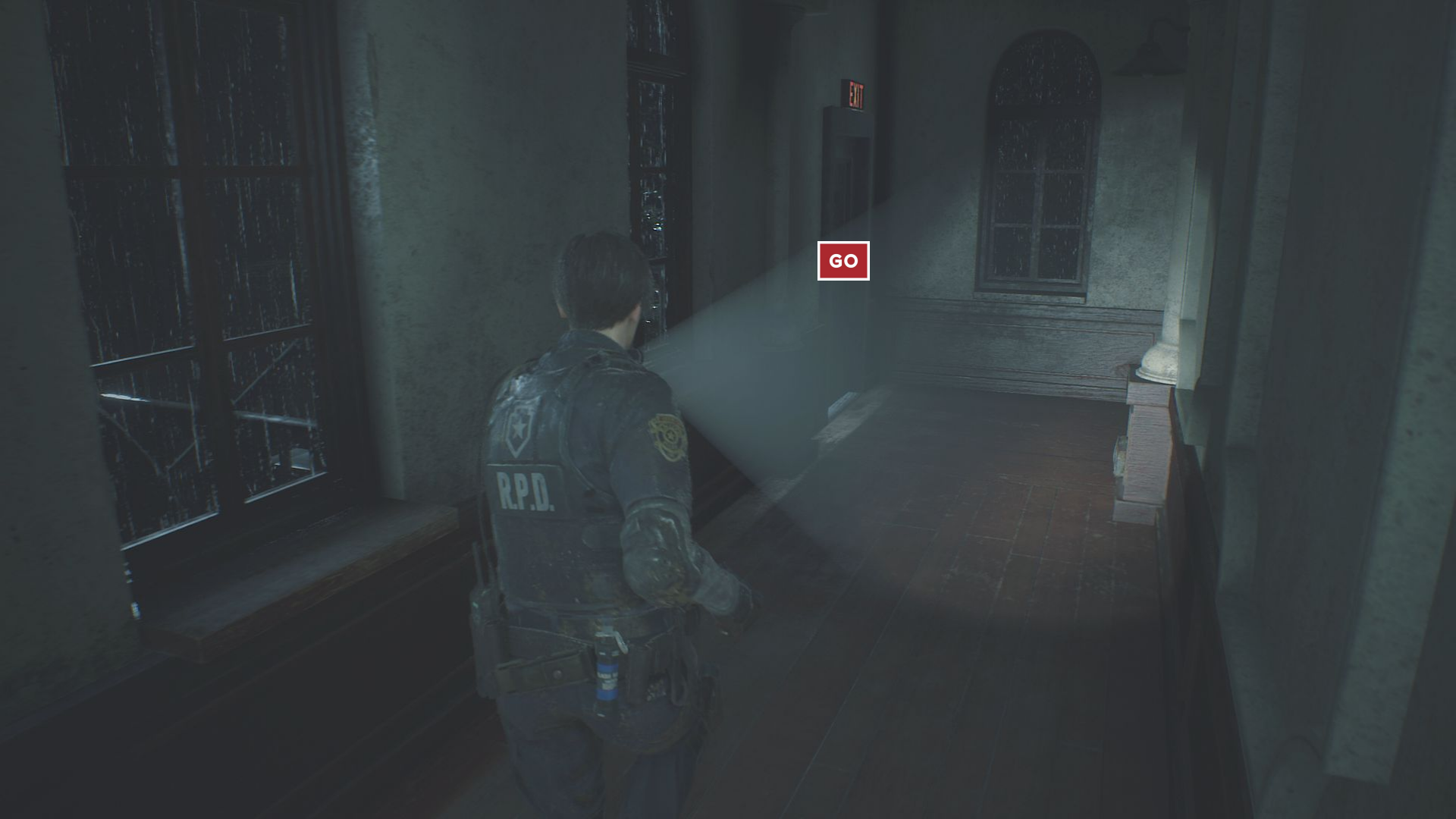
Water Valve 02



! * HATS OFF - Shoot Tyrant's hat off his head

GO





GO

EXIT

R.P.D.

A dark, industrial interior scene. In the foreground, a character wearing a dark vest with a star emblem and the letters "R.P.D." on the back is seen from behind, looking towards a door. The door is a simple, light-colored door with a small window. To the right of the door is a trash can with a white lid. A vertical pipe runs down the wall next to the trash can. In the background, a ladder leans against the wall. In the foreground on the right, a staircase with a metal railing leads down. Several large metal barrels are stacked near the staircase. The floor is made of cobblestones. A bright light source is visible at the top center, casting a glow on the scene. A red square with the word "GO" in white is overlaid on the door.

GO



GO



LEFT

GO





WALK



GO

Club Key (use)



Hand Grenade
Mechanic Jack Handle



Ink Ribbon x2

MR. X & LICKERS : If they attack use Flash Grenades and run (use First Aid Spray to heal if needed)



LIBRARY



Mechanical Jack Handle (use)

GO

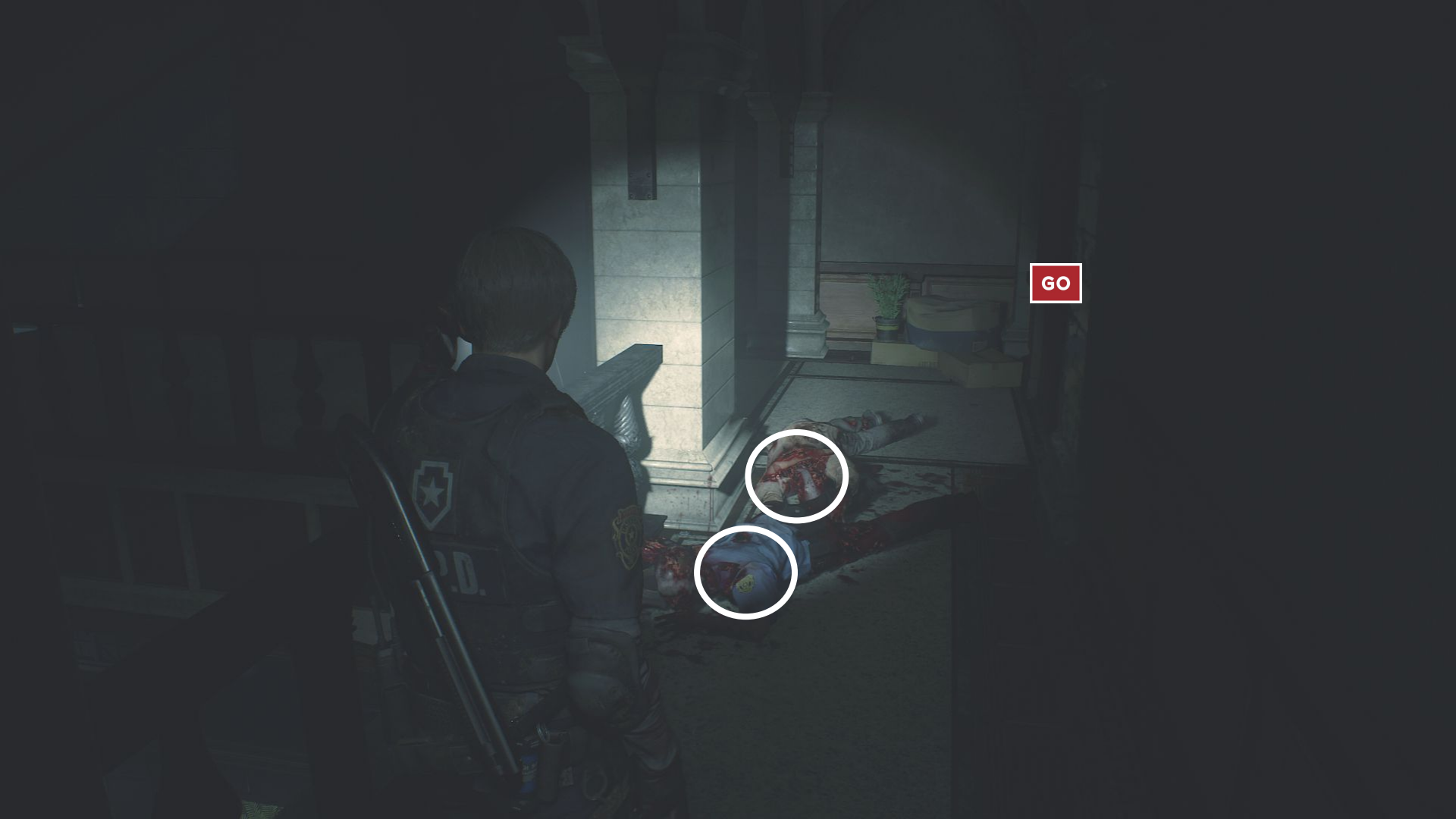




GO



15 | ∞



GO



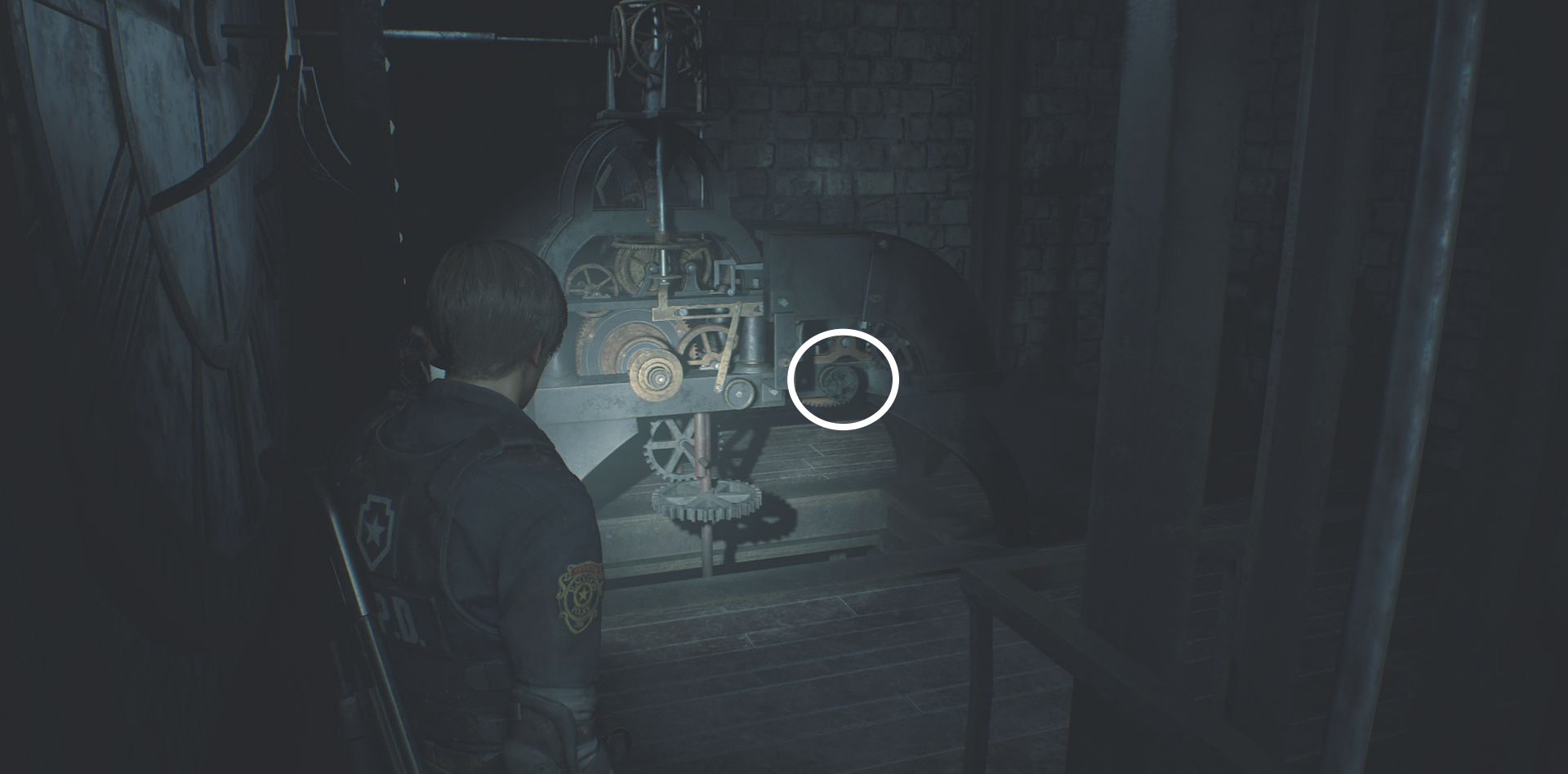
Large Gear (use)



Large Gear (use)
File * Repair Plan

STAIRS





Small Gear
Large Gear (use)



STAIRS

A character with short brown hair, wearing a dark police uniform with a star emblem on the back and a patch on the sleeve, is seen from behind. They are looking towards a set of stairs with a metal railing in a dark, stone-walled room. A red box with the word "STAIRS" is overlaid on the stairs. A small white circle with a downward arrow is visible in the bottom left corner.



Small Gear (use)



Boxed Electronic Part (examine) = Power Panel Part



LEFT

MAIN HALL

GO

DOWN
MR. X

12 | ∞



GO



GO



GO

A police officer is seated in a chair, viewed from behind. He is wearing a dark uniform with a star emblem on the back and a patch on the shoulder. The room has blue walls, a tiled floor, and a wooden door. A red label with the word "STAIRS" is positioned over the door. To the left is a desk with a computer monitor and a sign. To the right is a bulletin board and a trash can. The scene is dimly lit, with a light fixture above the door.

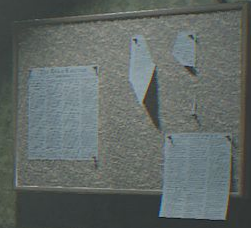
STAIRS

EXIT

GO

CLEANING
PRESS

P.D.

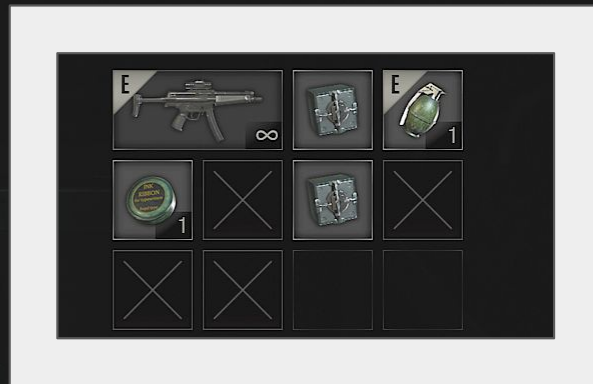




GO



	Combat Knife	
	Green Herb	
	Red Herb	
	Ink Ribbon	4
	Red Herb	
	Key	
	Green Herb	
	Green Herb	
	Red Herb	
	Green Herb	



Ink Ribbon


Key Item

An ink ribbon.
Required when using a Typewriter.



Ink Ribbon (use - save)

PAUSE

 00:42:03

Return to Game

Load Game

Records

Results

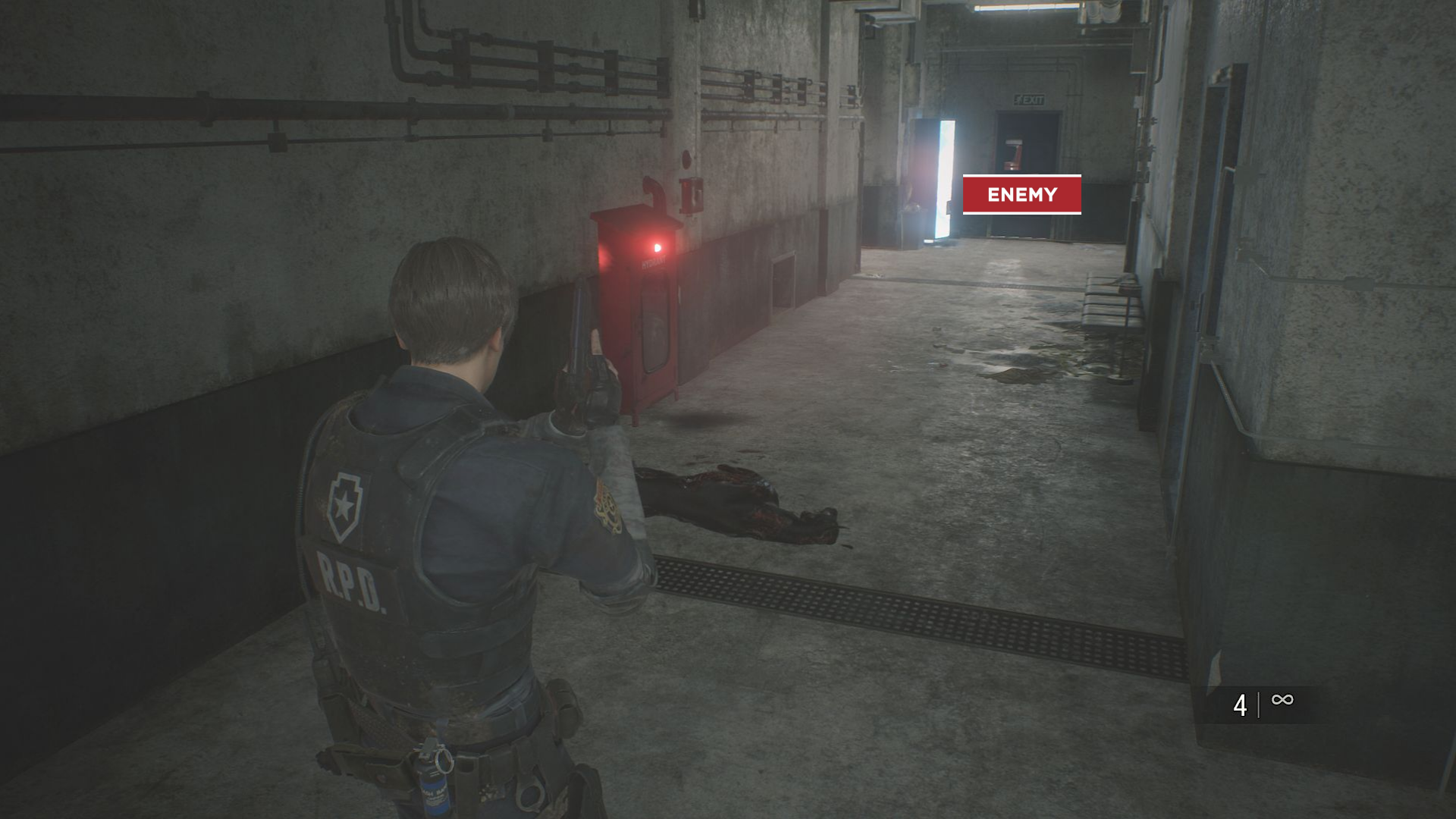
Costumes

Options

Quit

A police officer in a dark room, possibly a hospital or office, is shown from a third-person perspective. The officer is wearing a dark uniform with a patch on the left sleeve that reads "POLICE" and "1100". The officer is holding a handgun in their right hand and has a white bandage on their left hand. The room has a tiled floor, a wooden railing on the left, and a bed with a white sheet on the right. In the background, there is a desk with a computer monitor and a potted plant. A red label with the word "STAIRS" in white capital letters is positioned above the officer's head.

STAIRS

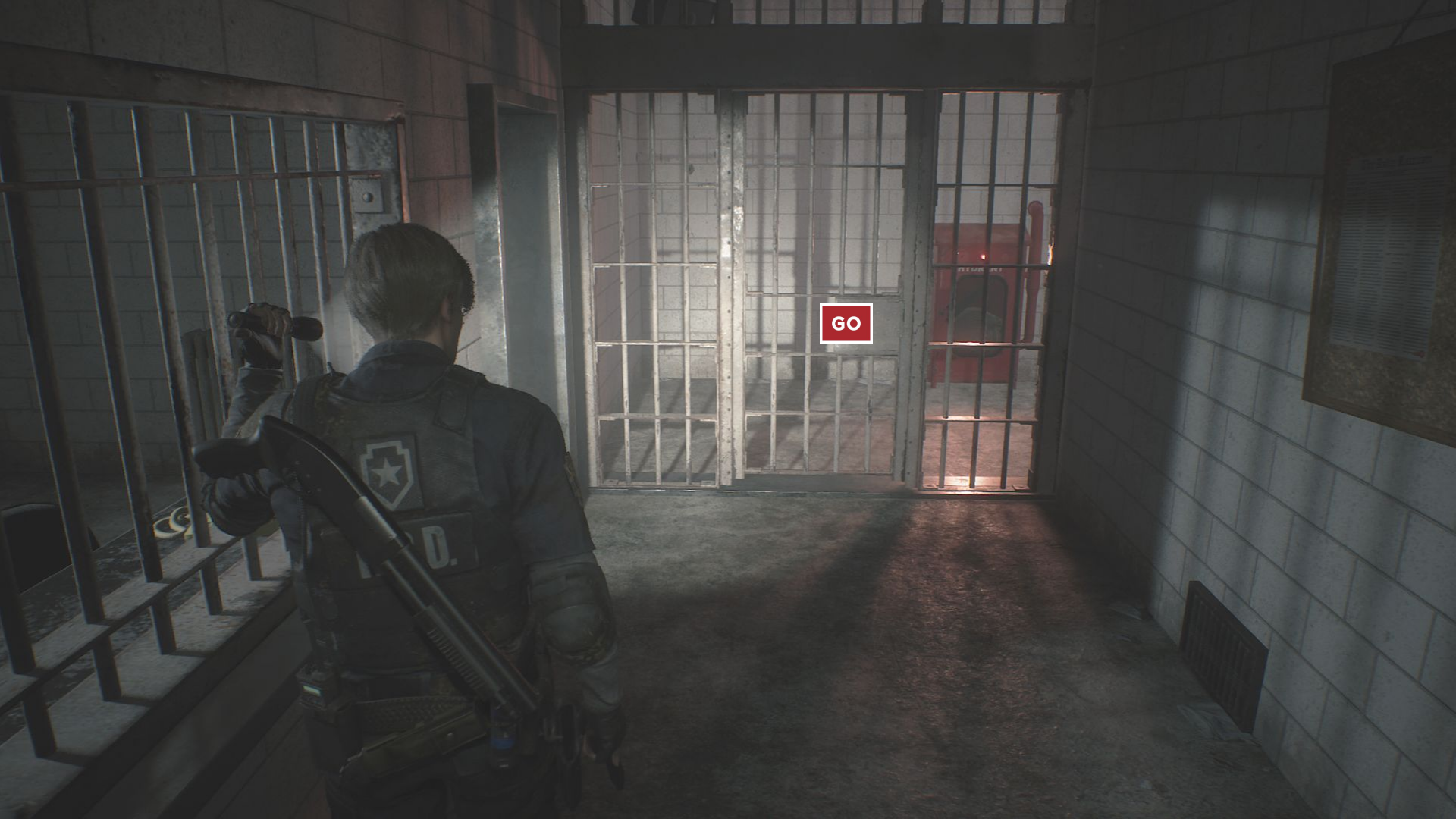


ENEMY

4 | ∞



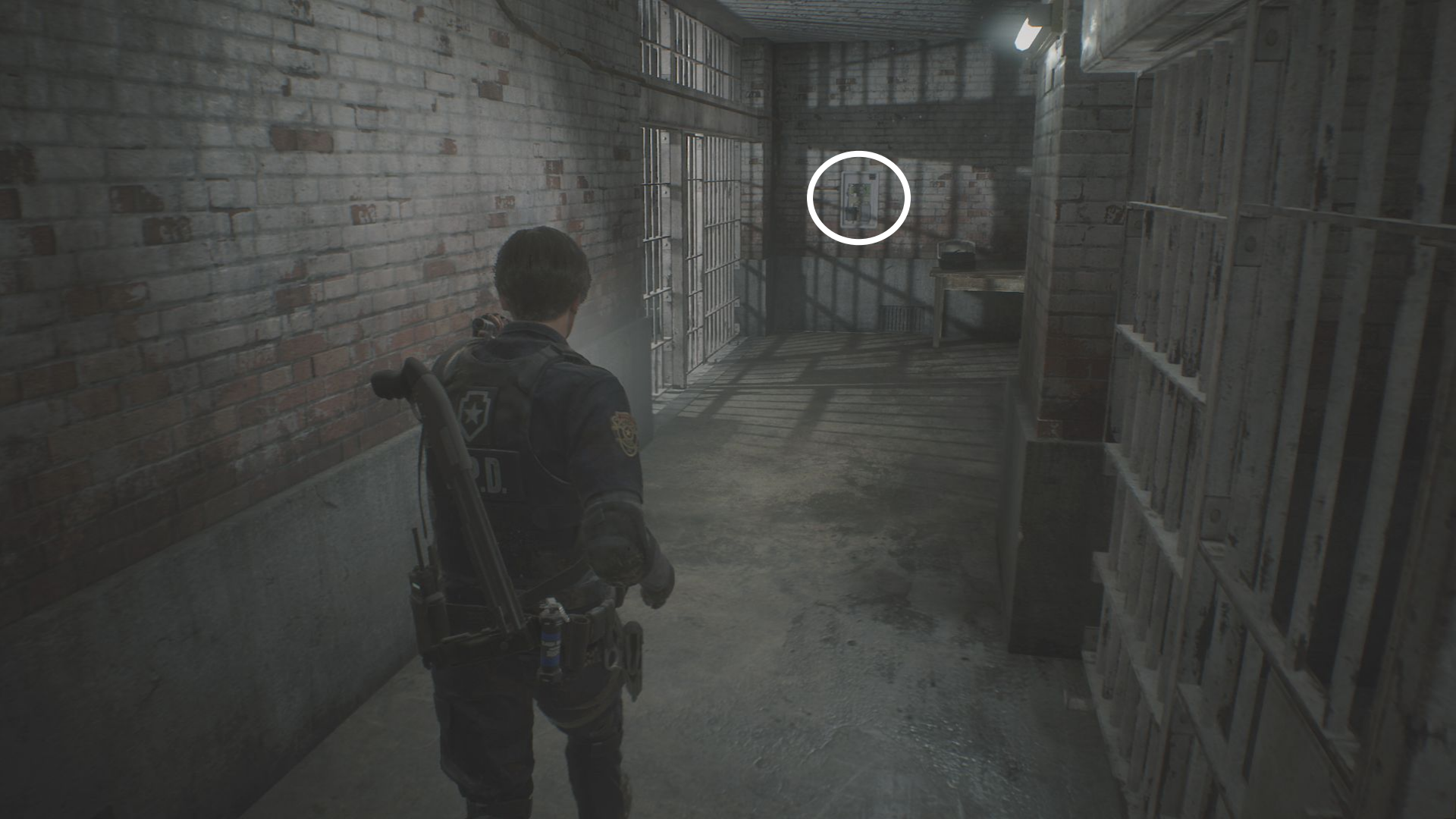
GO

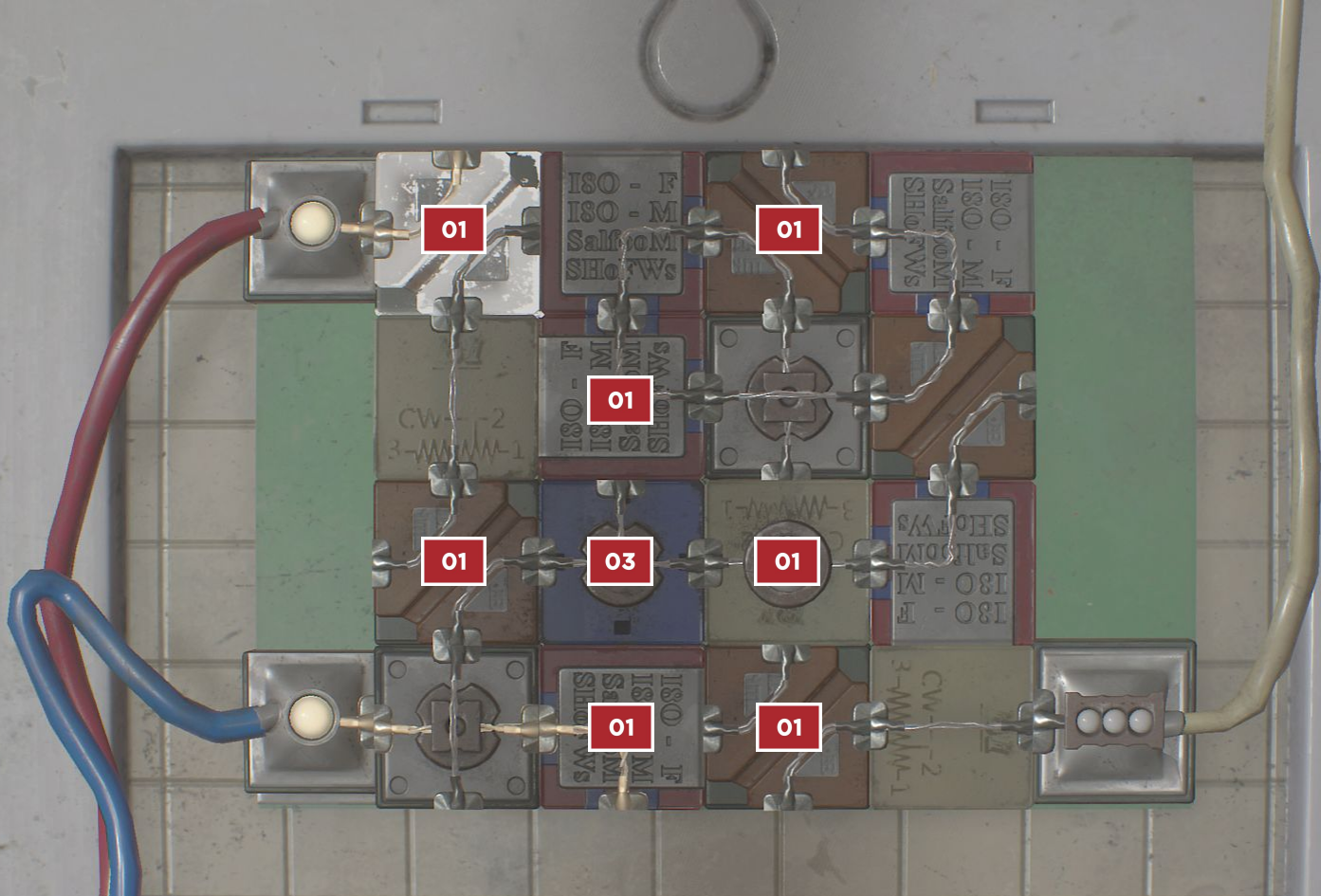


GO



GO





Electronic Part - Power Panel Part x2 (use) / Circuit Puzzle



File * Ben's Memo (read)

First Aid Spray

File * Interview Transcript (read) / Parking Garage Key Card



Gimme a break.



1

Flash Grenade (use on Mr. X and around corner on zombies)



Parking Garage Key Card (use)

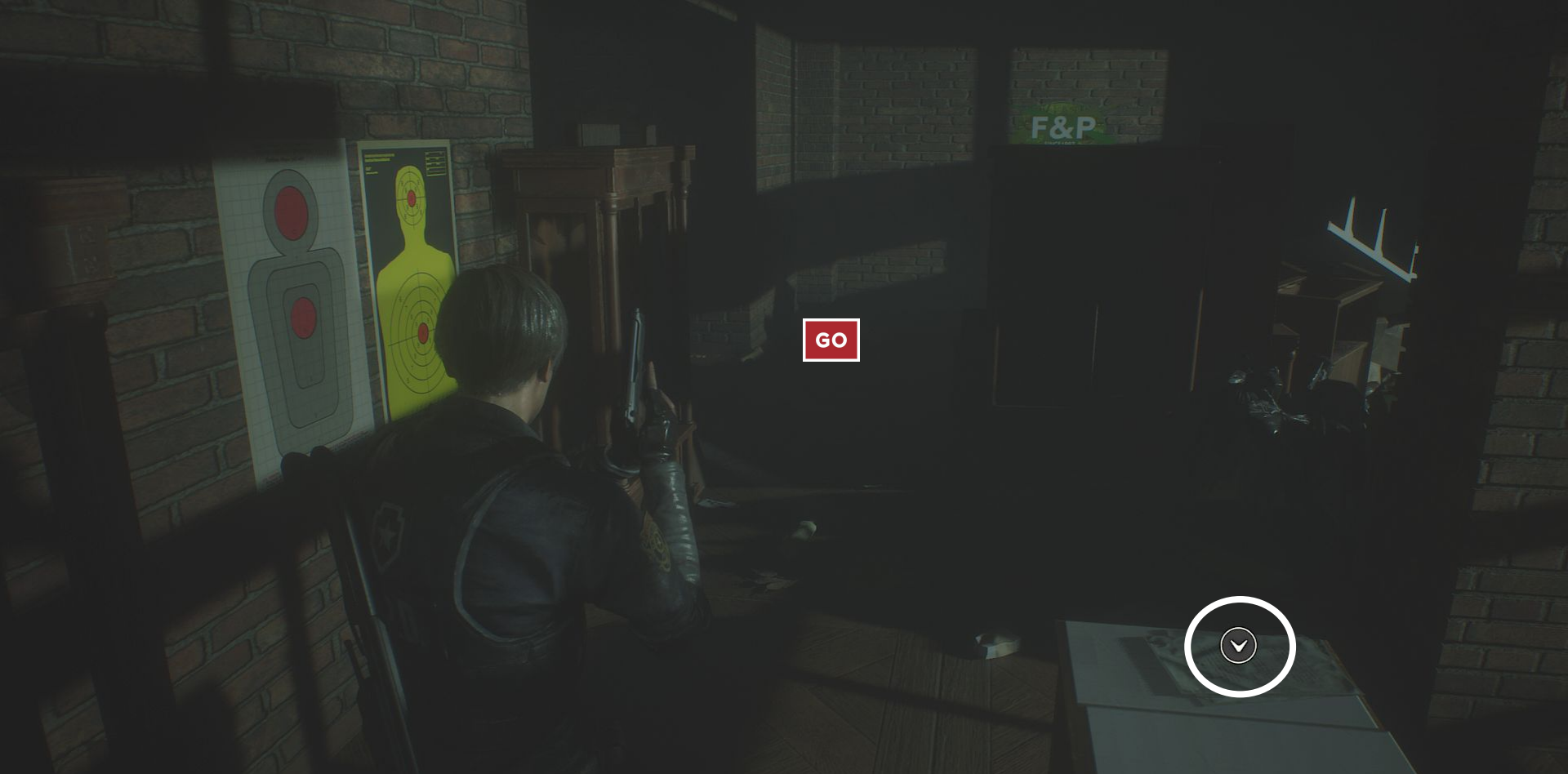
 GUN SHOP KENDO

GO

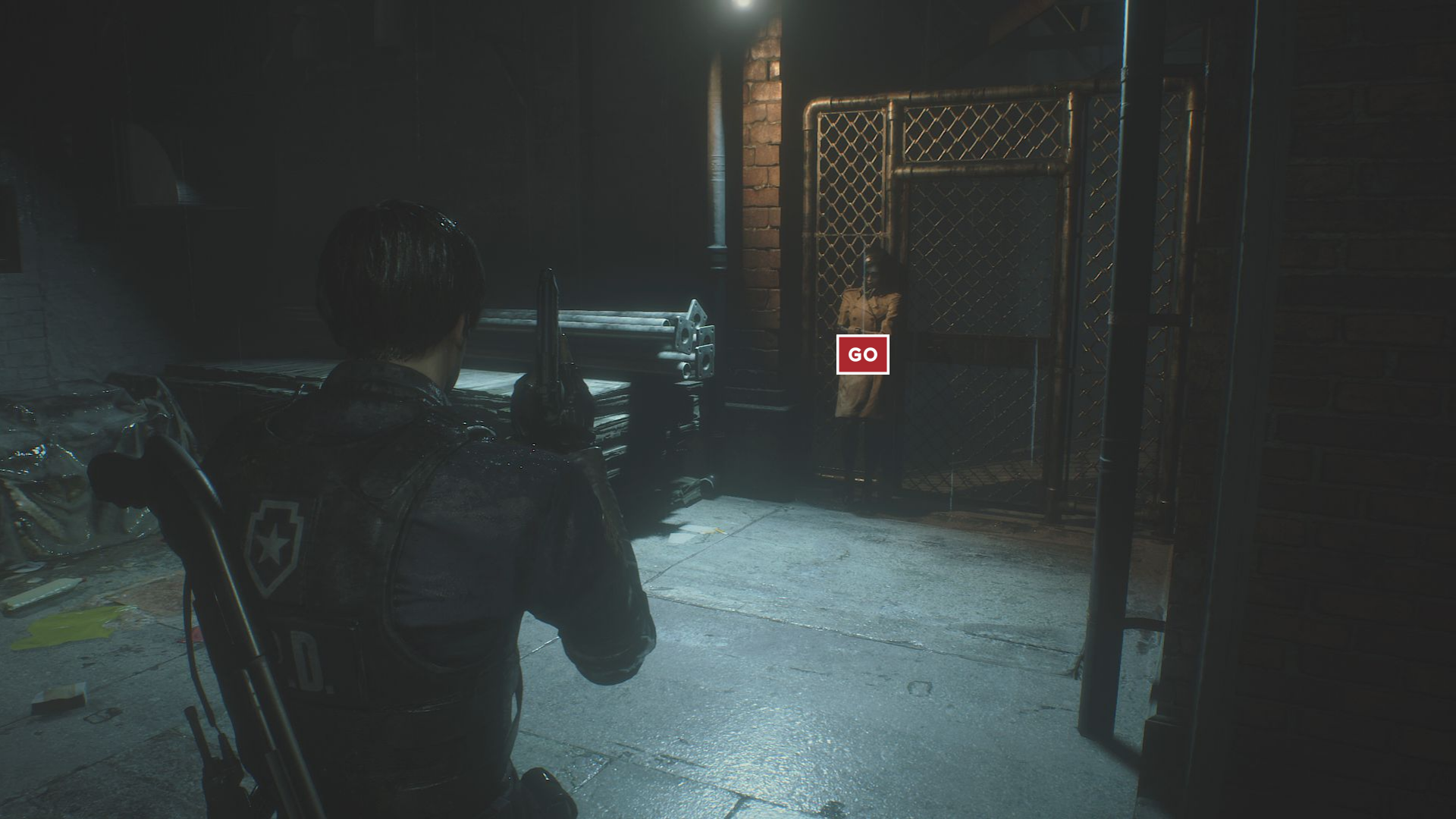




Hand Grenade



! * CHASING JILL - Read a letter left behind by Jill



GO



GO

They're a pharmaceutical company secretly making bioweapons.

A character in a dark, industrial setting, viewed from behind. The character is wearing a dark tactical vest with a white star and cross emblem on the back and the letters 'D.' below it. They are holding a handgun. In front of them is a large circular opening in a wall, with a red 'GO' sign in the center. The area is dimly lit, with some orange traffic cones and a red and white striped caution tape visible. A white checkmark icon is overlaid on the scene.

GO

She's the one at Umbrella responsible for unleashing the virus.



RIGHT



Ink Ribbon x2



LEFT
RIGHT
LEFT

Alligator (Boss)



Flammable gas



GO



Hand Grenade



Leon, up here!

15 | ∞

Raccoon * Sewers (after alligator)



GO



GO



Ink Ribbon (use - save)

PAUSE

00:50:21

Return to Game

Load Game

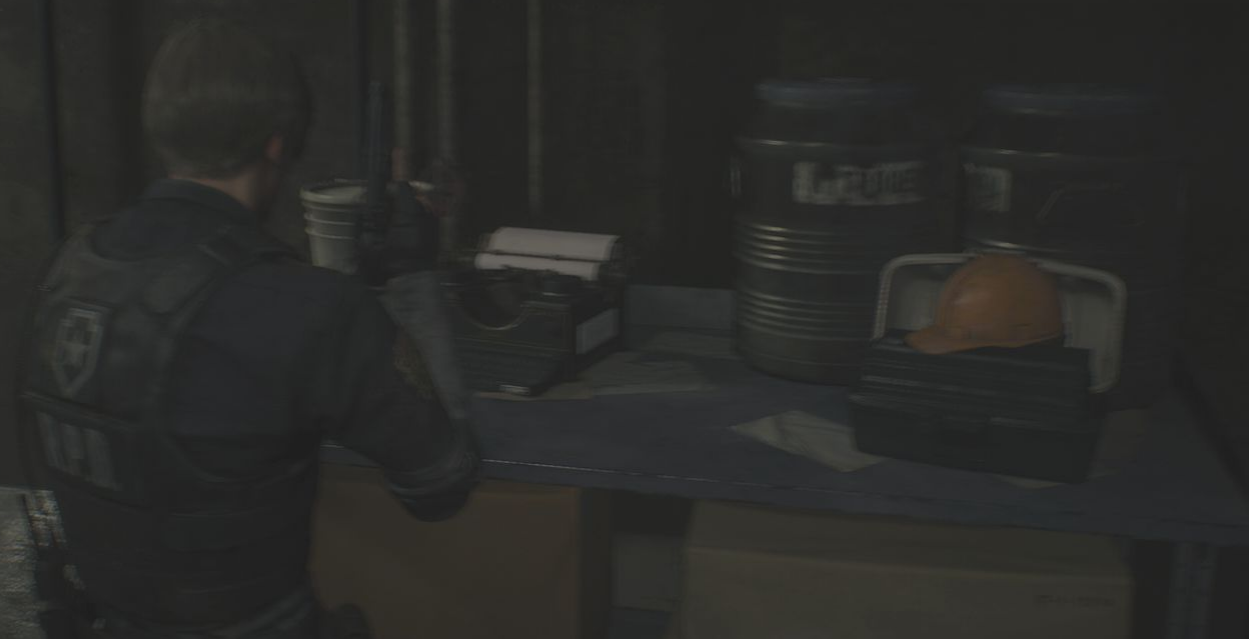
Records

Results

Costumes

Options

Quit

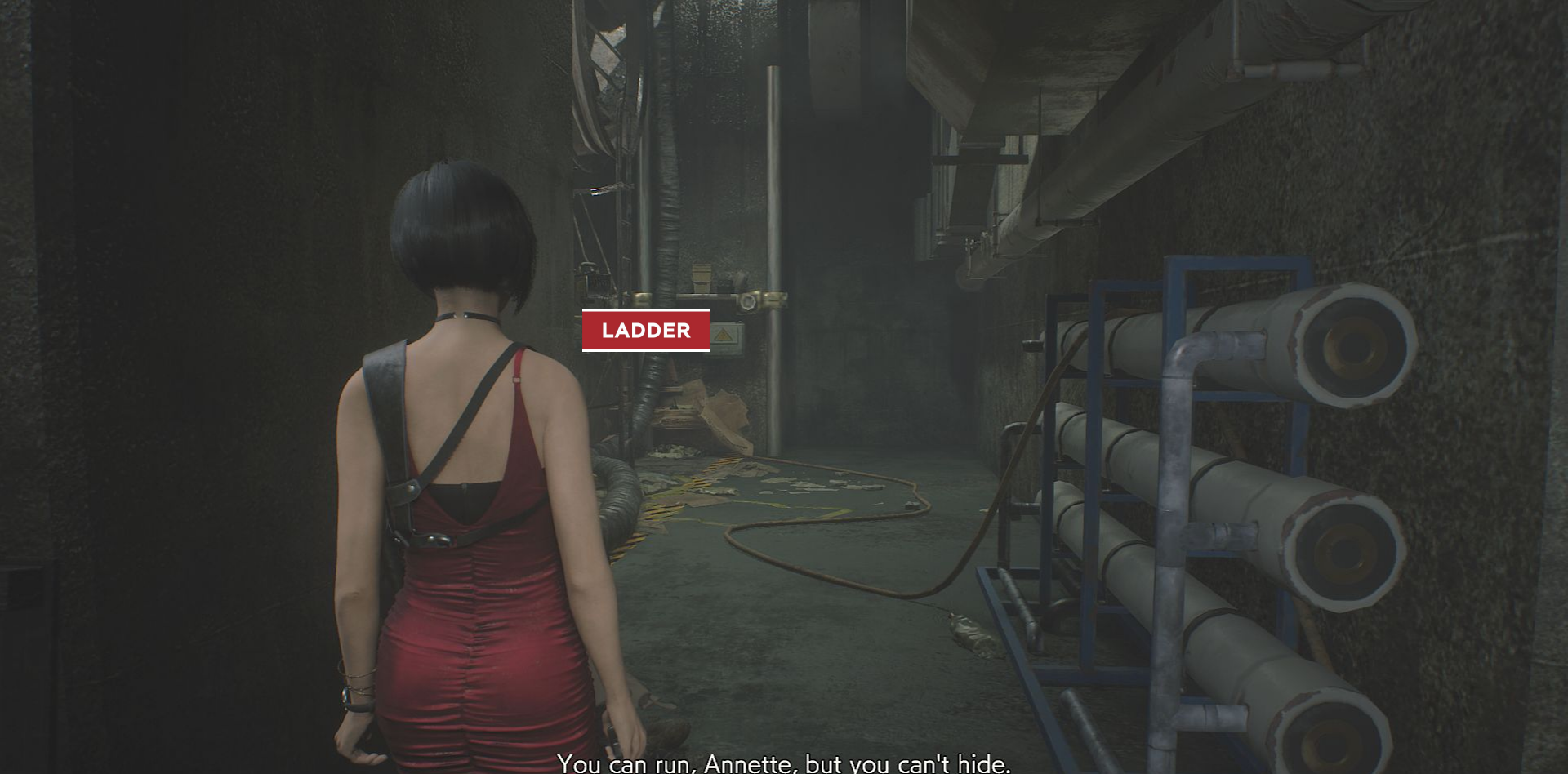




GO

NITROGEN

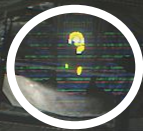
CP-1-15074



LADDER

You can run, Annette, but you can't hide.

GO



Draw + Hack

L2 + R2



∞

It's secret weapon time.

GO



∞





GO

∞



File * Sept. Inspection (Week 1)



GO



GO

A woman with short dark hair, wearing a red dress and black tights, is climbing a set of stairs in a dark, industrial environment. She is holding a small glowing object in her right hand. The stairs have a metal railing. In the background, there is a large metal structure with yellow and black diagonal hazard stripes. A red square with the word "GO" in white is positioned above the woman, indicating a prompt or objective.

GO

GO





A woman with short dark hair, wearing a red, form-fitting, backless dress with a black strap across her back, is walking away from the camera down a dark, industrial hallway. The hallway is dimly lit, with a single light source visible in the distance. The floor is concrete and shows signs of wear and debris. A red square sign with the word "GO" in white capital letters is positioned in the middle of the hallway. To the right, there is a fire extinguisher and some scattered debris on the floor. The walls are dark and appear to be made of metal or concrete.

GO



UP



GO



Persistent bastard, aren't you?







GO

∞

A woman with short dark hair, wearing a red, form-fitting, backless dress with black straps, is walking away from the camera in a dark, industrial setting. The room is dimly lit by a single fluorescent light fixture on the ceiling. In the background, there is a metal table with various items on it, including a blue bucket and some boxes. To the right, there is a large, dark, rectangular object that looks like a piece of machinery or a storage unit. The overall atmosphere is mysterious and cinematic.

GO



GO

∞



Ink Ribbon (use - save)

PAUSE

00:53:16

Return to Game

Load Game

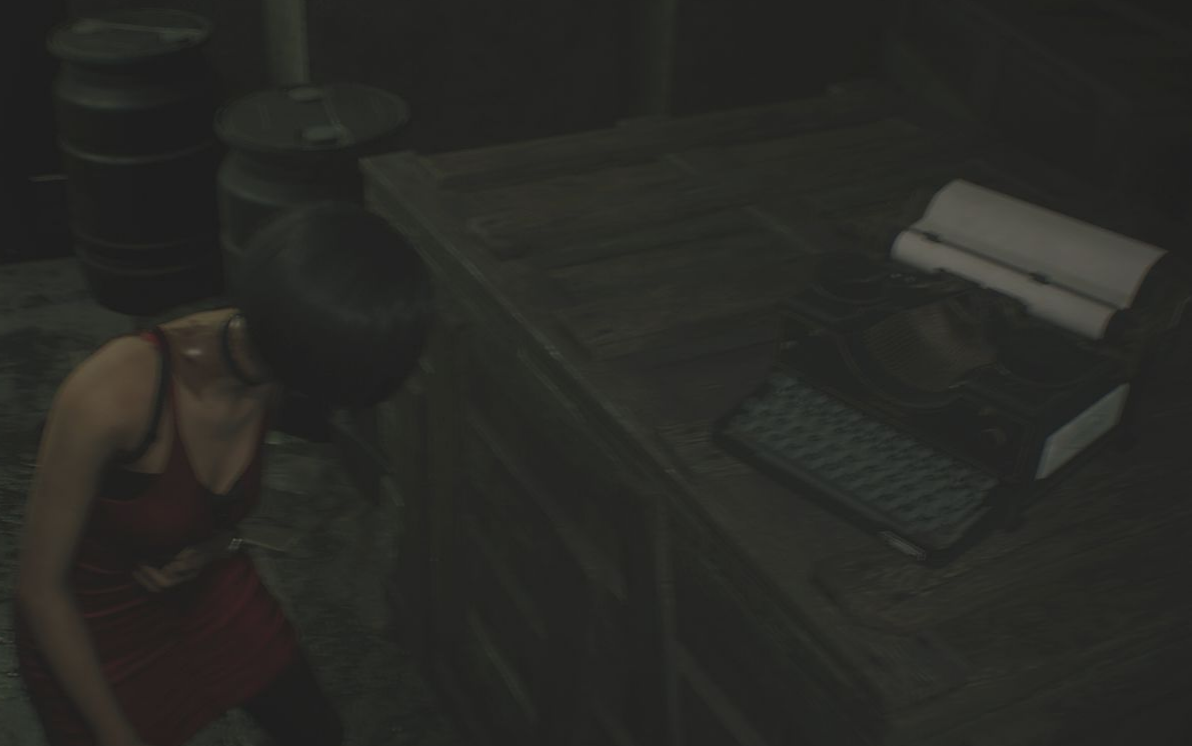
Records

Results

Costumes

Options

Quit



GO





Raccoon * Near Incinerator (Ada)
Load (previous save x2)

GO





File * Sept. Inspection (Week 2) (read)



GO



ID Wristband

00:57:61



∞

00:52:34



00:45:08



00:39:48



∞

00:32:19



∞

00:26:68



A woman with short black hair, wearing a red, backless, form-fitting dress and a black choker, stands with her back to the camera in a dark, industrial environment. She is looking towards a doorway illuminated by a light fixture. A red rectangular box with the word "LEFT" in white capital letters is positioned in the center of the frame, pointing towards the doorway. The floor is dark and cluttered with debris, including a white bucket and some papers. To the right, there are two red fire extinguishers and some green panels leaning against a wall. The overall atmosphere is dark and gritty.

LEFT

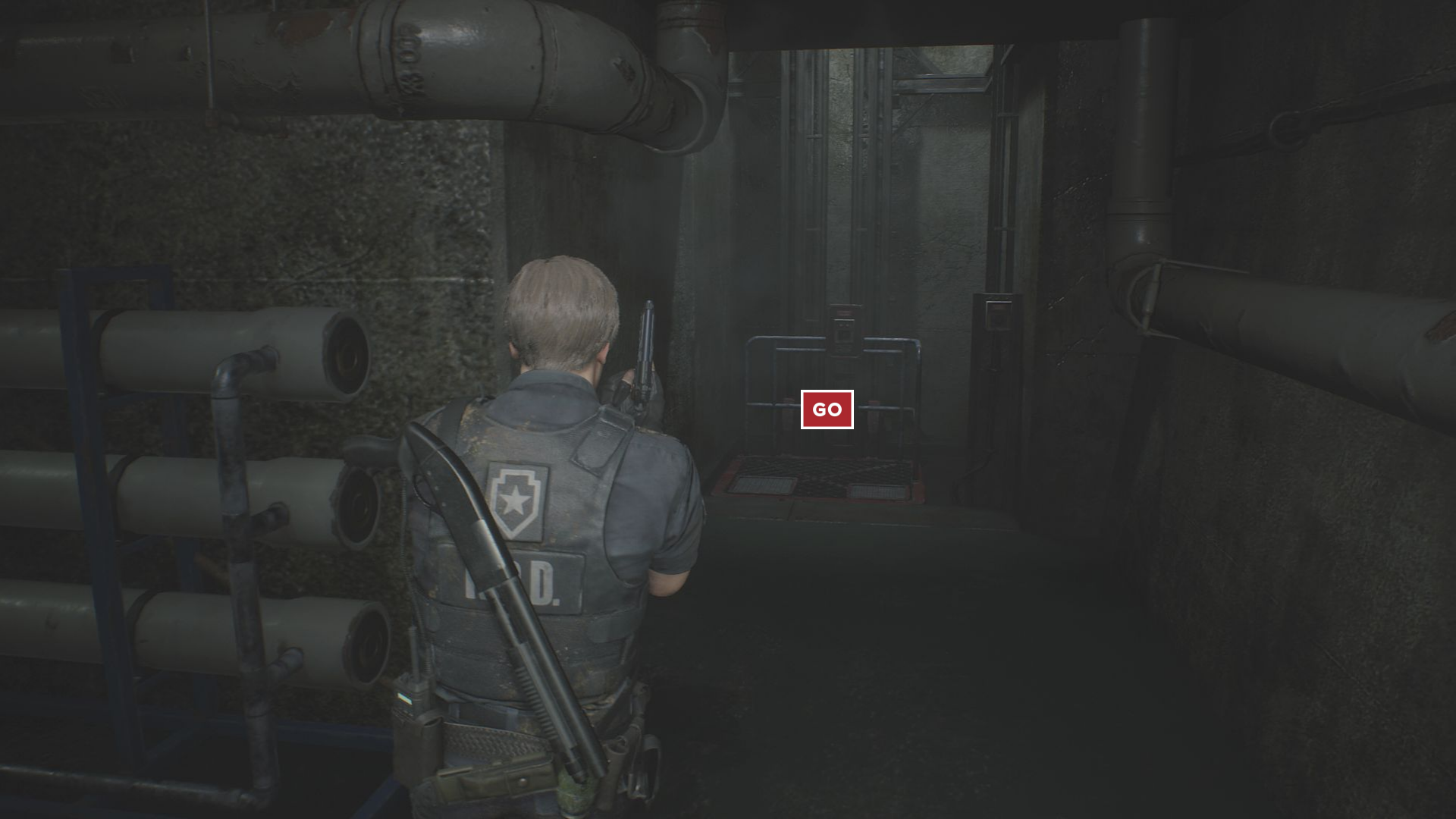
That bitch knows what she's doing...



! * ONE SLICK SUPER-SPY - Use only the EMF Visualizer to complete Ada's gameplay segment
! * HACK COMPLETE - Complete Ada's segment



TURN



GO



Ink Ribbon (use - save)

PAUSE

00:55:23

Return to Game

Load Game

Records

Results

Costumes

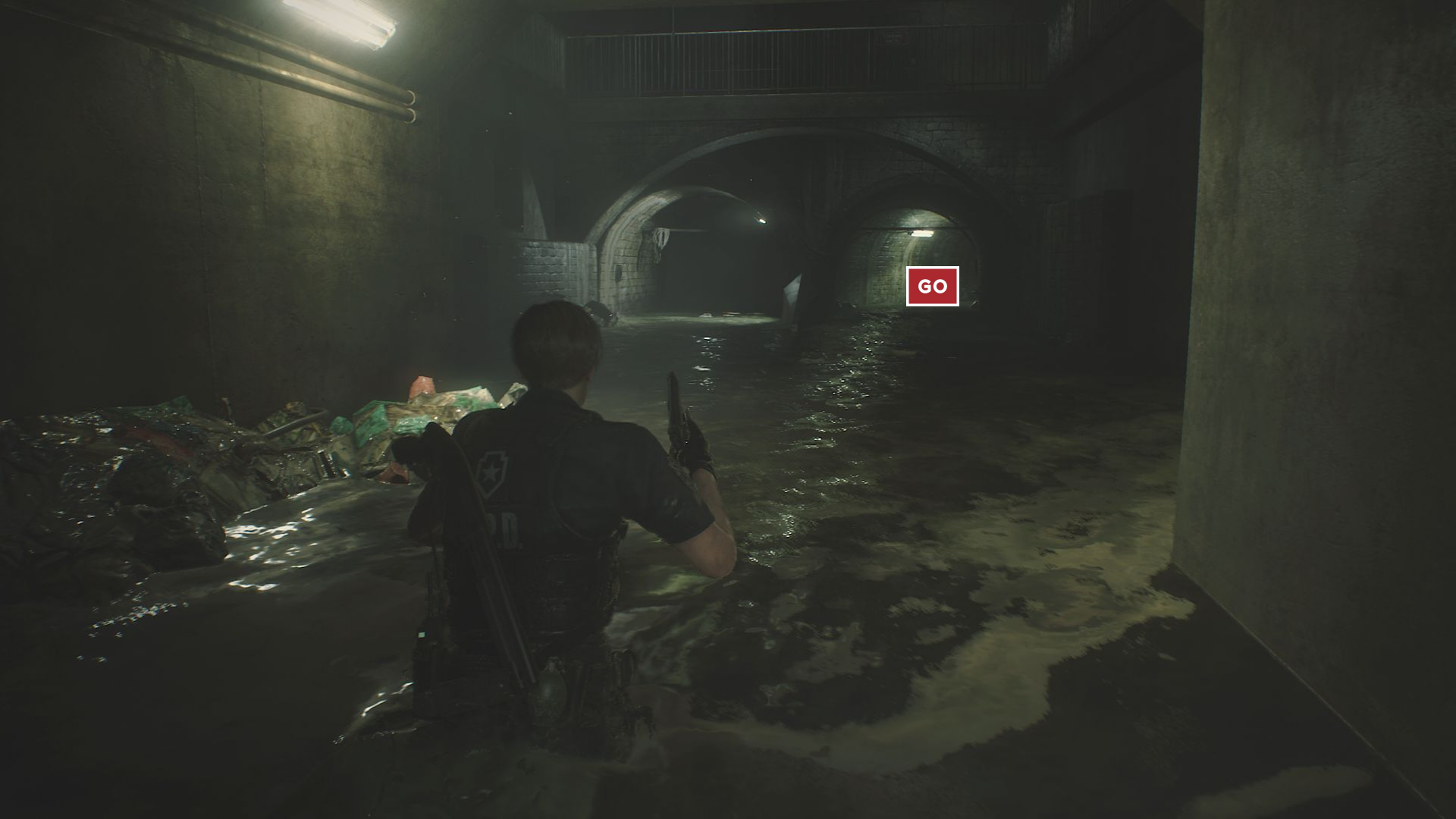
Options

Quit

Time *



RIGHT

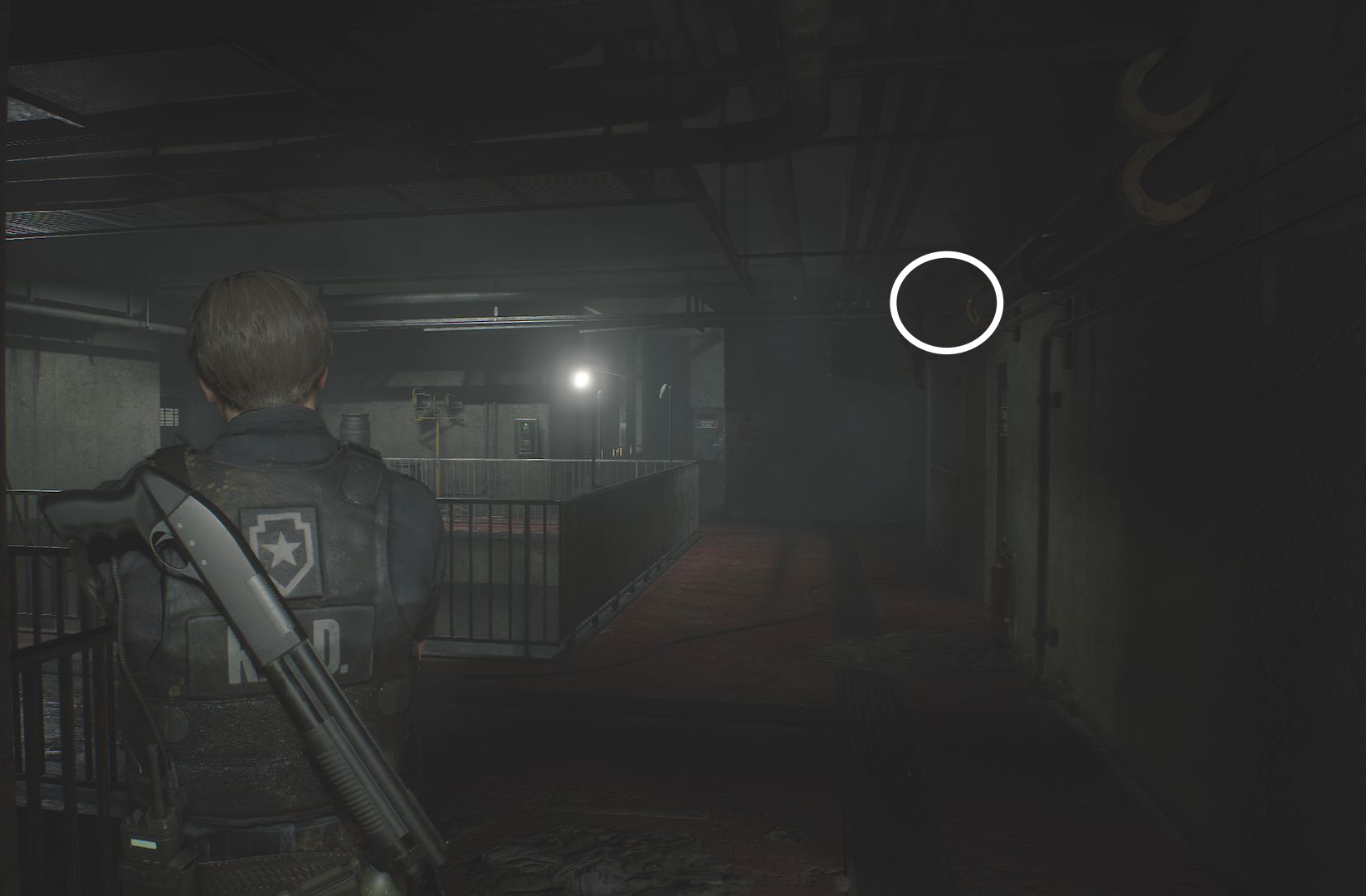


GO

GO



15 | ∞





GO





Combat Knife

A third-person view of a character in a dark, industrial environment. The character is wearing a black leather jacket with a white cross and star emblem on the back and is holding a handgun. The environment is dimly lit, with a bright light source in the distance. A red square with the word 'GO' in white is positioned in the middle ground. The character's shadow is cast on the ground.

GO

Argh... Shit!



Blue Herb



ENEMY



GO



GO

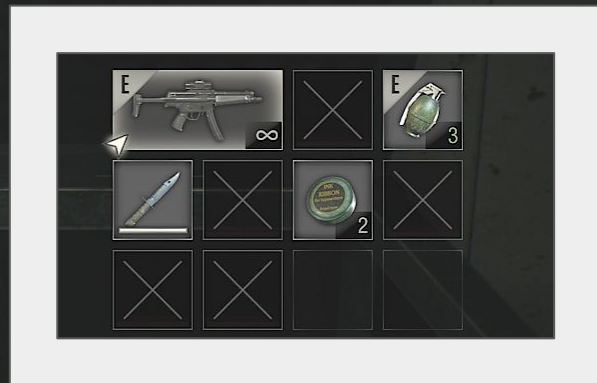


File * Copy of Emails to Umbrella HQ (read)



Ink Ribbon

	Red Herb	
	Green Herb	
	Green Herb	
	Green Herb	
	Green Herb	
	Mixed Herb (G+R+B)	
	Mixed Herb (G+B)	
	Key	
	Blue Herb	
	First Aid Spray	



LE 5
Submachine Gun

32-shot capacity .380 ACP machine gun. Uses a closed bolt and has high accuracy.



Ink Ribbon (use - save)

PAUSE

01:00:57

Return to Game

Load Game

Records

Results

Costumes

Options

Quit

Time *



GO



GO

GO





GO



File * Delivery Receipt (read)



File * Claire's Note (read)
T Bar
Red Herb



Blue Herb (combine with Red Herb) = Mix R+B



EXIT

GO







LEFT



Hand Grenade



RUN

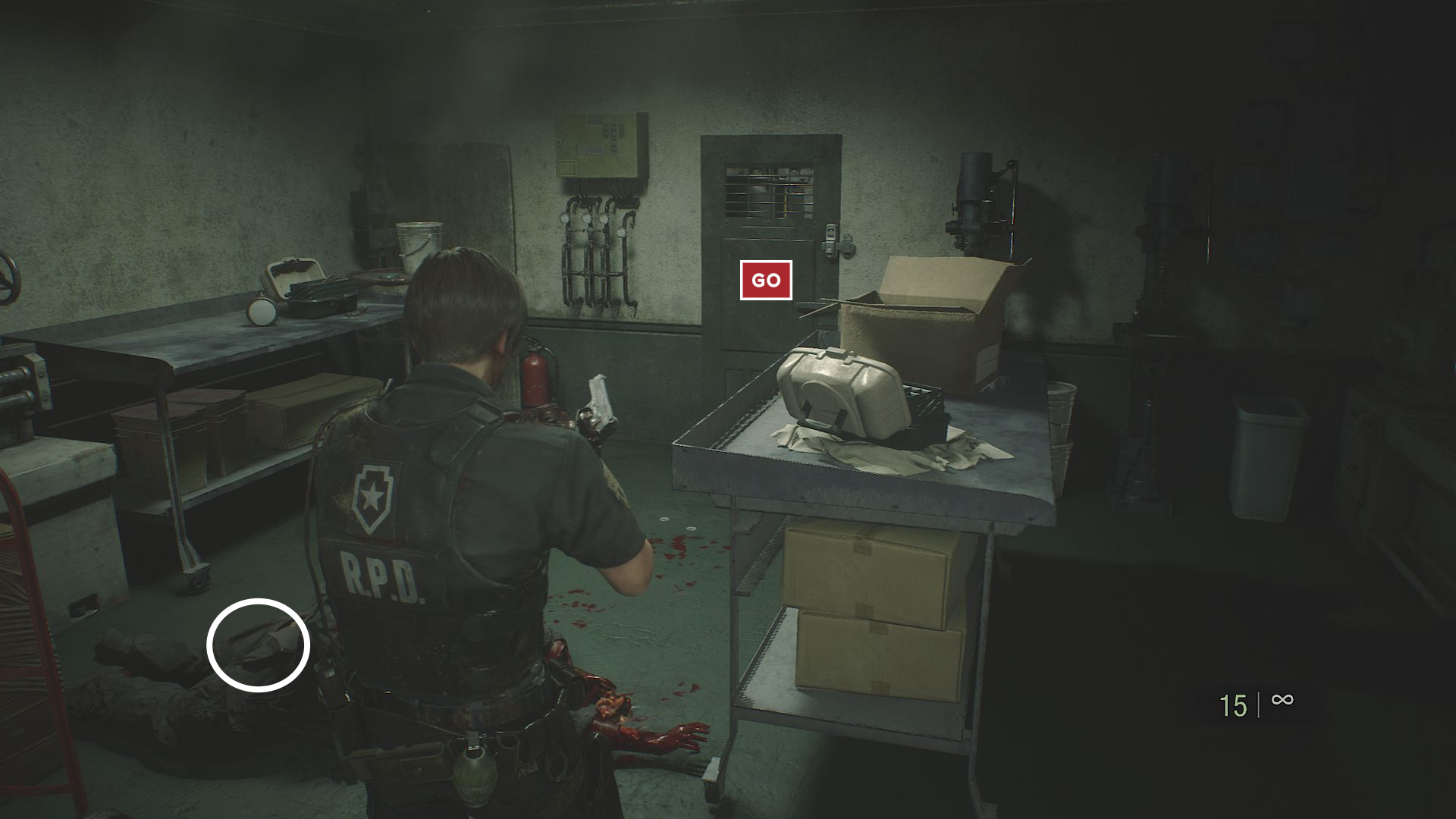




T Bar (use)



GO



GO



15 | ∞



Rook

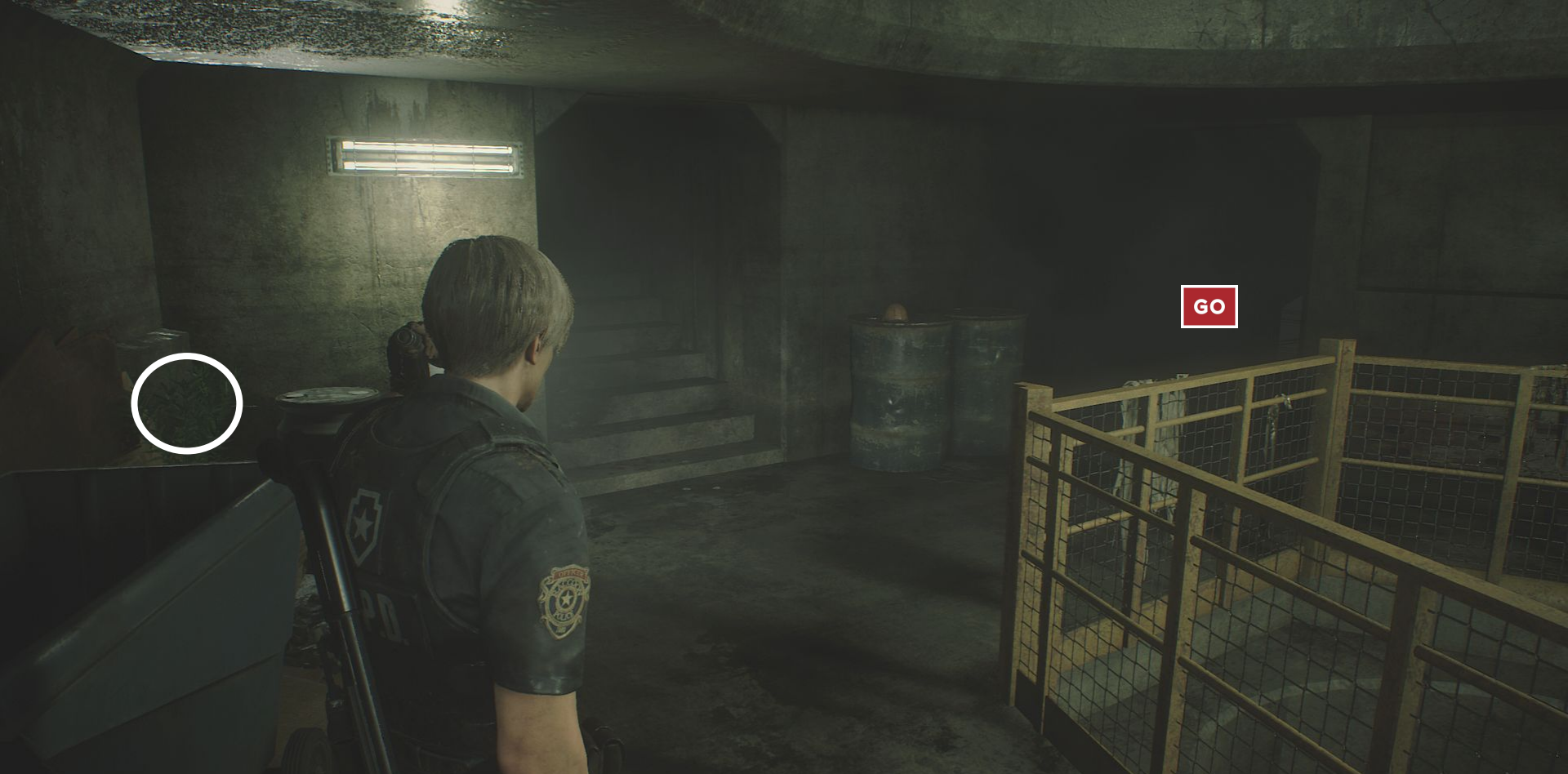


GO



RUN

SHOOT x1



Green Herb (combine with Mix B+R) = Mixed G+R+B



T Bar (use)

A police officer in a dark, industrial setting, possibly a basement or underground area. The officer is wearing a dark uniform with a vest that has a shield-shaped logo and the letters "R.P.D." on the back. The officer is holding a flashlight that illuminates a large, empty metal cage or structure. In the background, there is a desk with a chair and some papers on a wall. A red label with the word "LADDER" is visible on the left side of the image.

LADDER



GO





SHOOT x1

RUN





15 | ∞

Raccoon * Sewers

GO





Queen

GO





Queen (use)

R.P.D.

GO





15 | ∞



Queen
Combat Knife (discard - if possible)
Queen (use)



GO





King (use)



Queen

GO



PLUGIN



GO



15 | ∞

GO



GO

HOLD





RIGHT



GO



GO



File * Sewers Company Pamphlet (read)



Bishop (replace with Queen)



Bishop (use)



Knight (replace with King)



File * Unlocking the U-Area Door (read)
Knight (use)



Rook (use)



GO

OK...almost there, Ada.



	Samurai Edge (Original Model)	∞
	Matilda	4
	Red Herb	
	Blue Herb	
	Blue Herb	
	Red Herb	
	Green Herb	
	Ink Ribbon	4
	Red Herb	
	Key	



Blue Herb

Recovery Item

A blue herb native to the Arklay Mountains. It can be used to remove toxins from your body.



Ink Ribbon (use - save)

PAUSE

01:13:32

Return to Game

Load Game

Records

Results

Costumes

Options

Quit

Time *



GO





Blue Herb



GO

Green Herb



Red Herb (combine with Green Herb and Blue Herb) = Mixed G+R+B
Circuit (Red - Green - Green - Green)



GO



(Boss) - LE 5



15 | ∞

Crane
Flash Grenade
Combat Knife



(Boss) - LE 5, Crane, Flash Grenade

A character in a dark, industrial setting, viewed from behind, aiming a handgun. The character is wearing a dark, tactical vest with a white cross emblem on the back and a patch on the right shoulder. A large, mounted machine gun is visible on the left. In the background, a doorway is illuminated, and a red sign with the word "GO" in white capital letters is mounted on the wall above the doorway. The environment is filled with metal pipes, scaffolding, and debris, suggesting a construction or industrial site.

GO

Let's hope that's the last of him.



