

CHARM PATTERNS by Gertie

PICNIC TOP

Sizes 2-20
with cup sizes A-H

5/8 inch (1.5 cm) seam allowances are included on all pattern pieces.

Page 1 of 3

PAGE 1 PATTERN PIECES

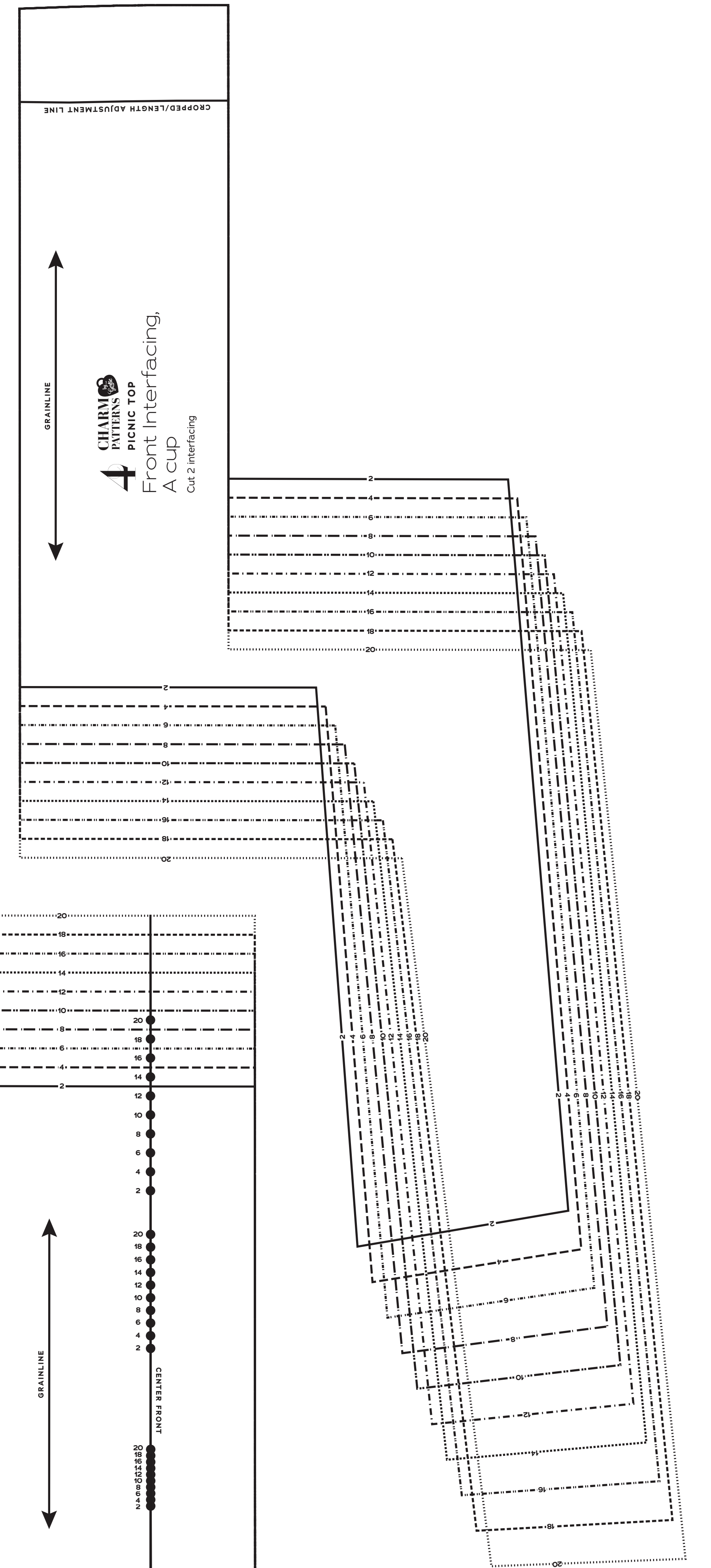
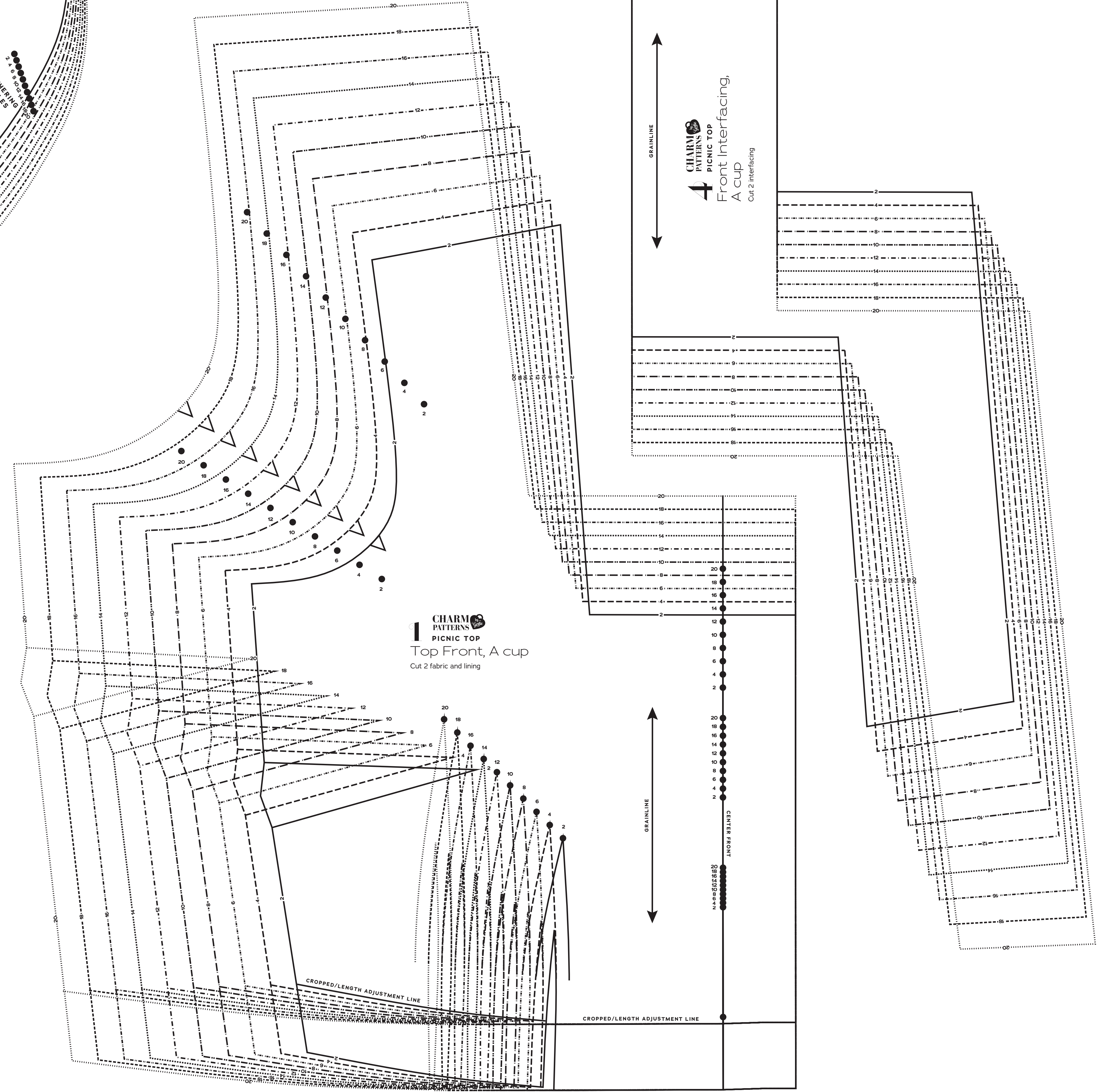
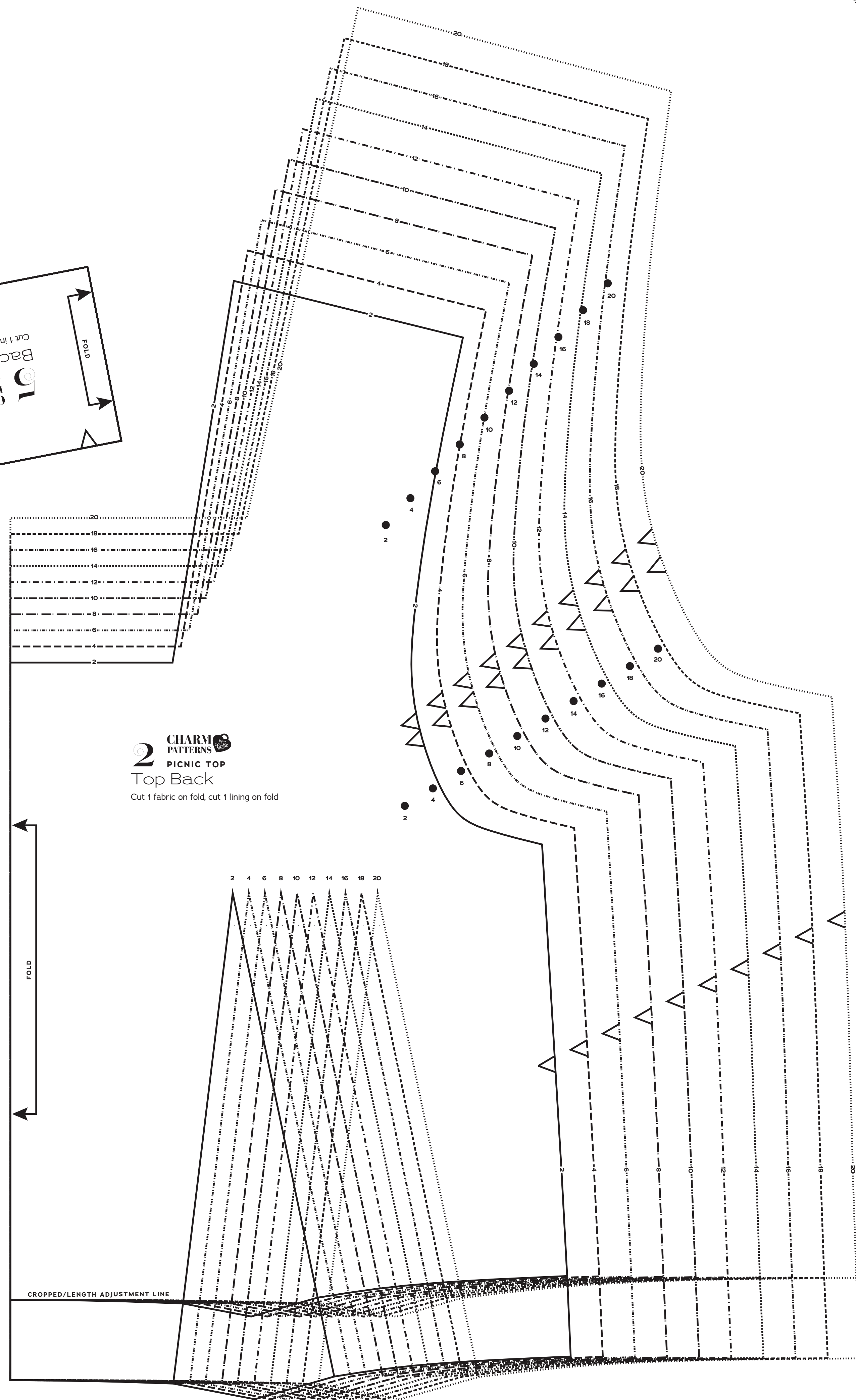
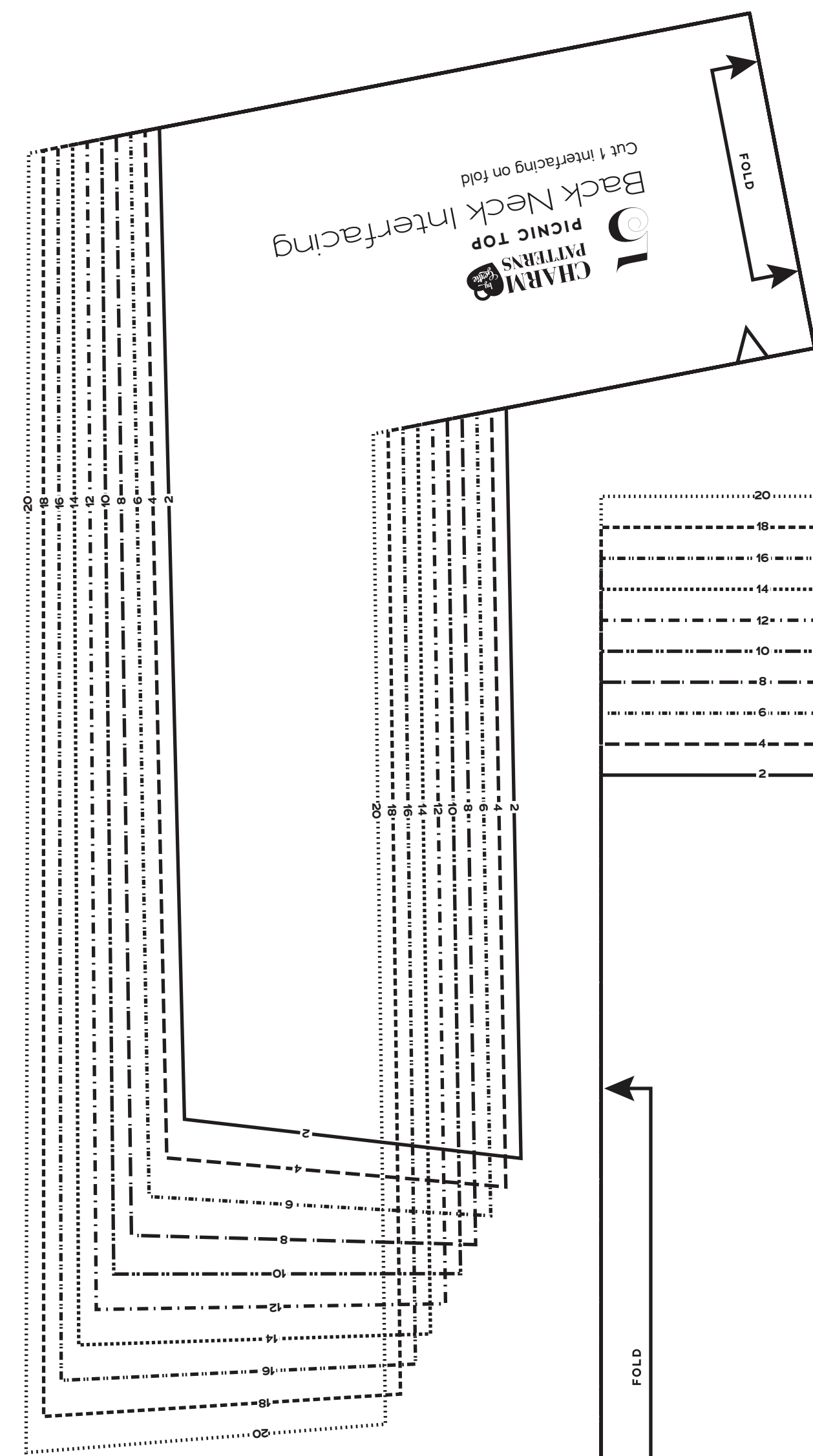
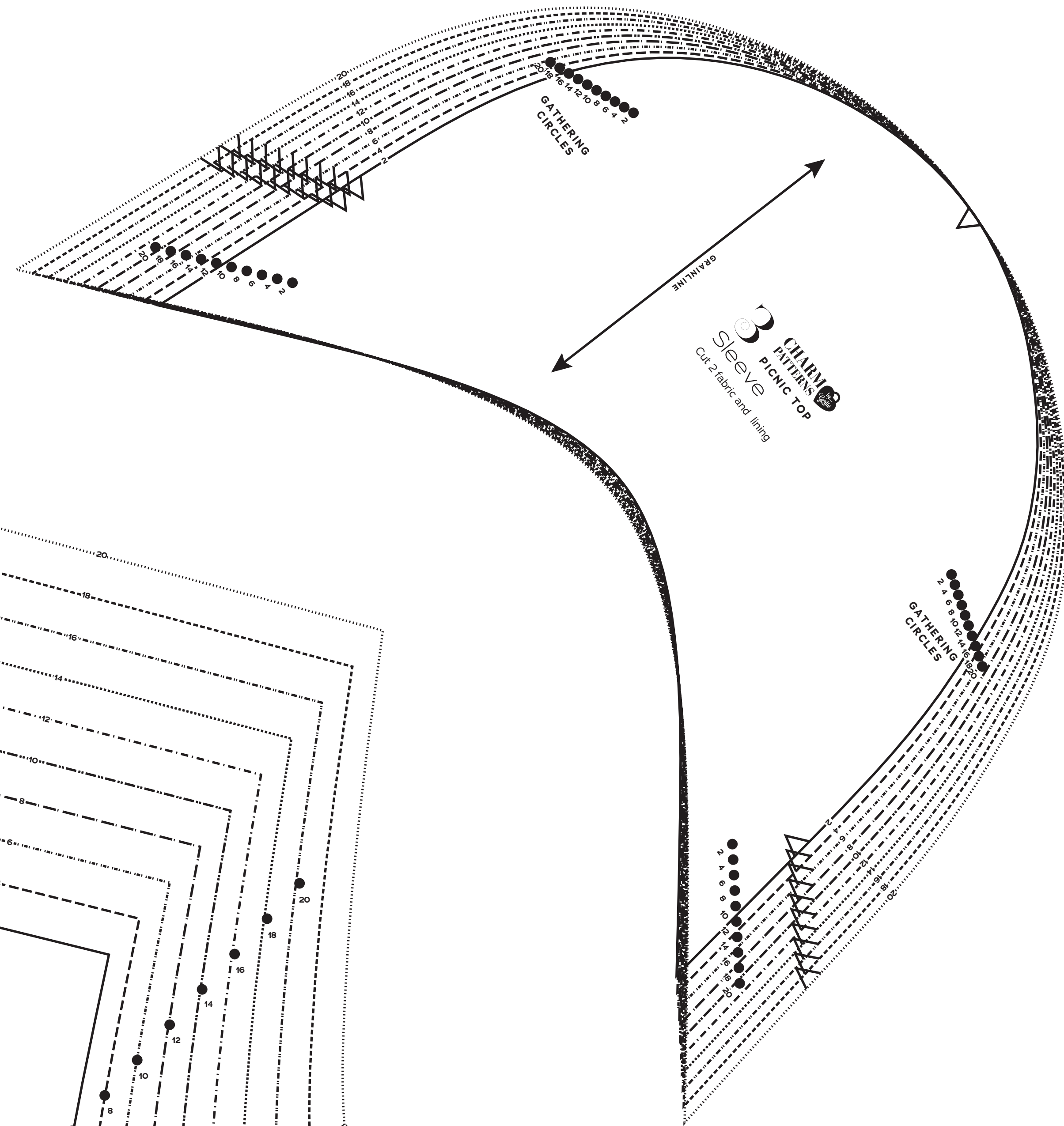
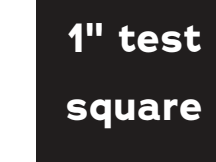
- 1 Top Front, A cup
- 2 Top Back
- 3 Sleeve
- 4 Front Interfacing, A cup
- 5 Back Neck Interfacing

PATTERN SIZE KEY

- | | |
|----|-------|
| 2 | --- |
| 4 | ---- |
| 6 | ----- |
| 8 | ----- |
| 10 | ----- |
| 12 | ----- |
| 14 | ----- |
| 16 | ----- |
| 18 | ----- |
| 20 | ----- |

SYMBOL KEY

- grainline arrow
- match point/ placement mark
- 1" test square



CHARM PATTERNS by Gertie

PICNIC TOP

Sizes 2-20
with cup sizes A-H

5/8 inch (1.5 cm) seam allowances are included on all pattern pieces.

Page 2 of 3

PAGE 2 PATTERN PIECES

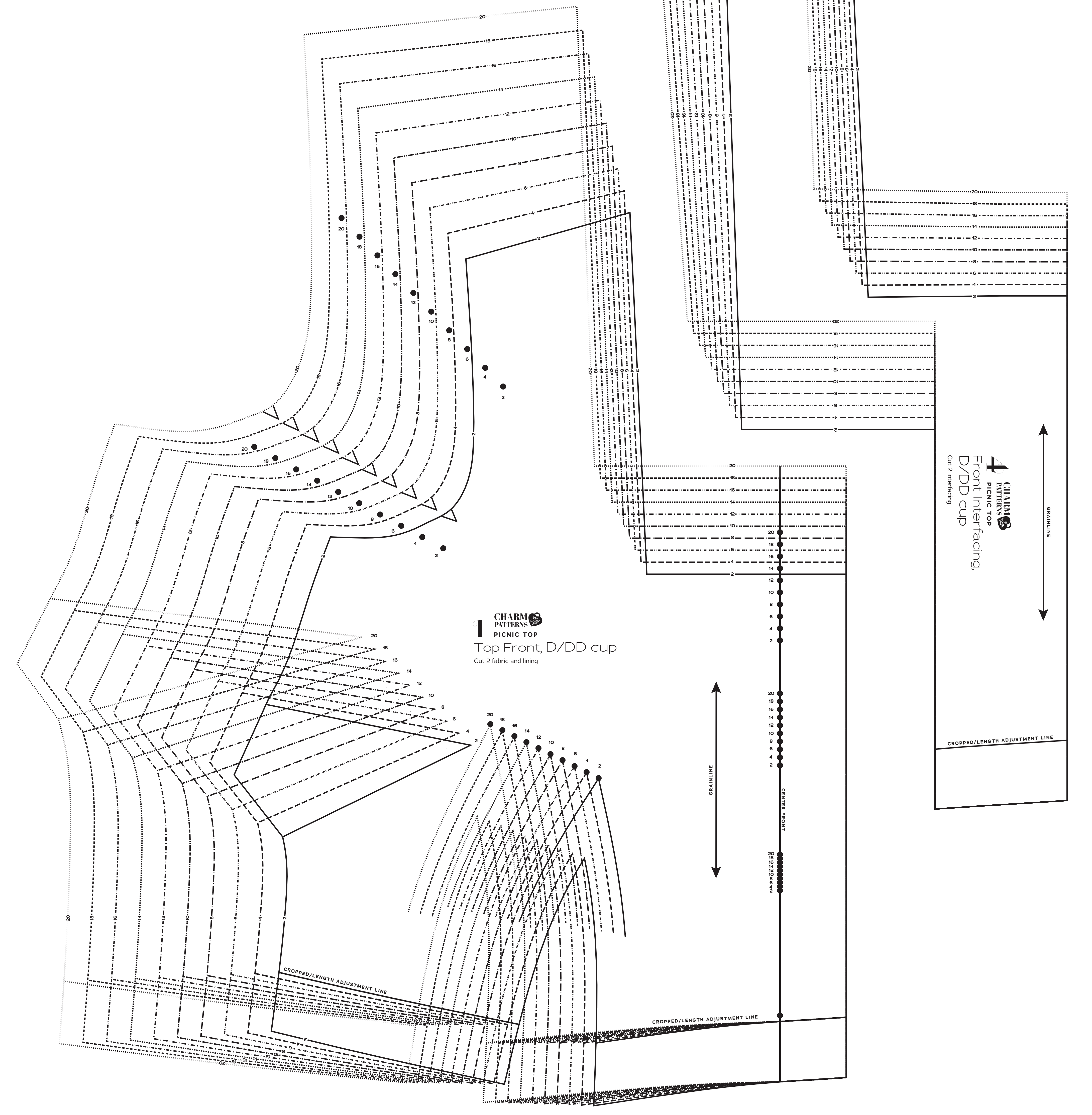
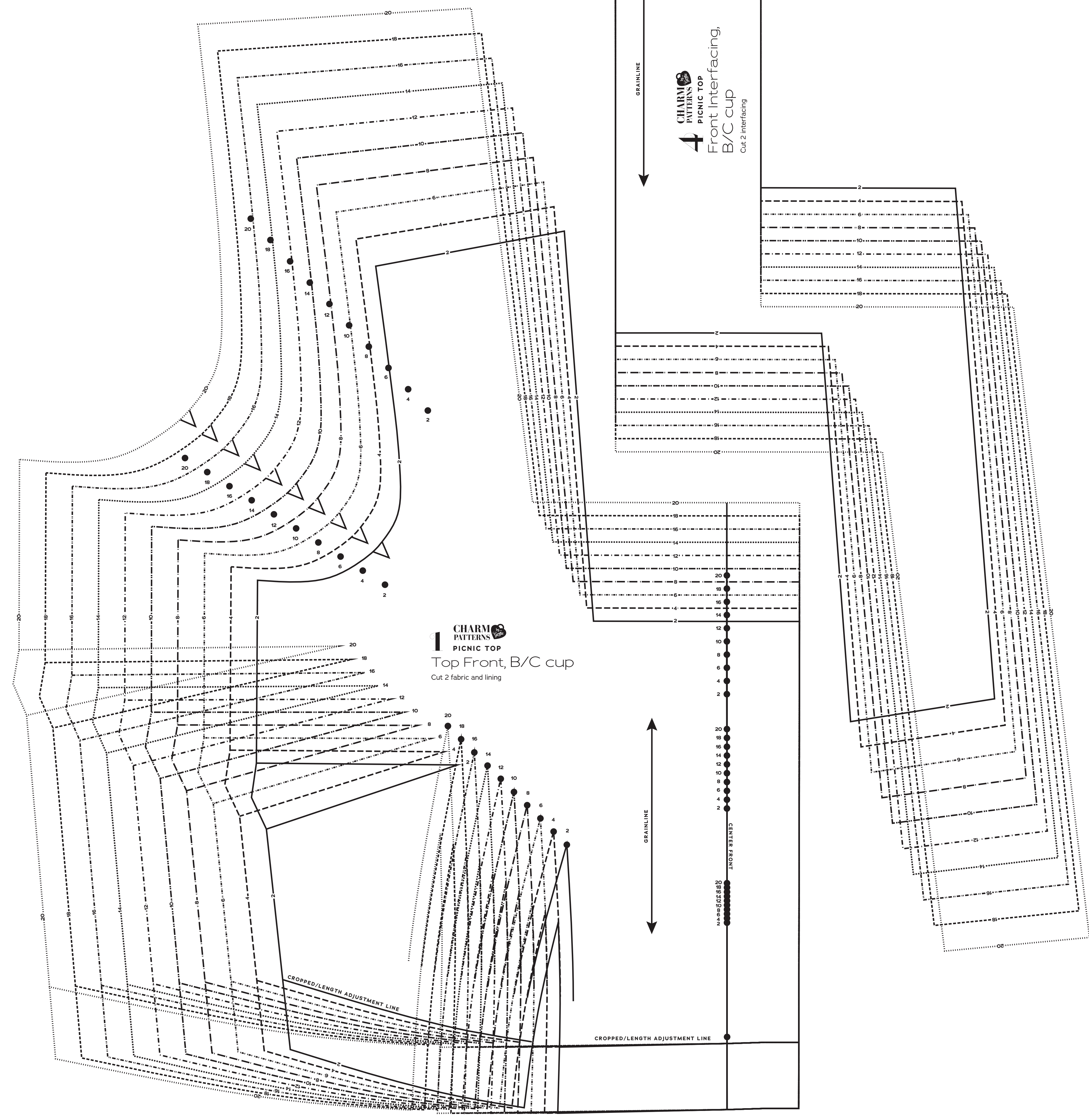
- 1 Top Front, B/C cup
- 1 Top Front, D/DD cup
- 4 Front Interfacing, B/C cup
- 4 Front Interfacing, D/DD cup

PATTERN SIZE KEY

2	-----
4	-----
6	-----
8	-----
10	-----
12	-----
14	-----
16	-----
18	-----
20	-----

SYMBOL KEY

	grainline arrow
	match point/ placement mark
	1" test square



CHARM PATTERNS



PICNIC TOP

Sizes 2-20
with cup sizes A-H

5/8 inch (1.5 cm) seam allowances are included on all pattern pieces.

Page 3 of 3

PAGE 3 PATTERN PIECES

- 1 Top Front, F/G cup
- 1 Top Front, H cup
- 4 Front Interfacing, F/G cup
- 4 Front Interfacing, H cup

PATTERN SIZE KEY

2	---
4	----
6	-----
8	-----
10	-----
12	-----
14	-----
16	-----
18	-----
20	-----

SYMBOL KEY

→	grainline arrow
↔	match point/ placement mark
•	1" test square

