

CHARM  
ARTIST  
COLLECTIVE



# LIZABETH RAGLAN TOP

A PATREON EXCLUSIVE PATTERN





### DESIGN OPTIONS

- Top: Hip-length or Cropped
- Waist: Drawstring or Ribbed
- Sleeve: Long or Three-Quarter
- Cuff: Applied or Ribbed

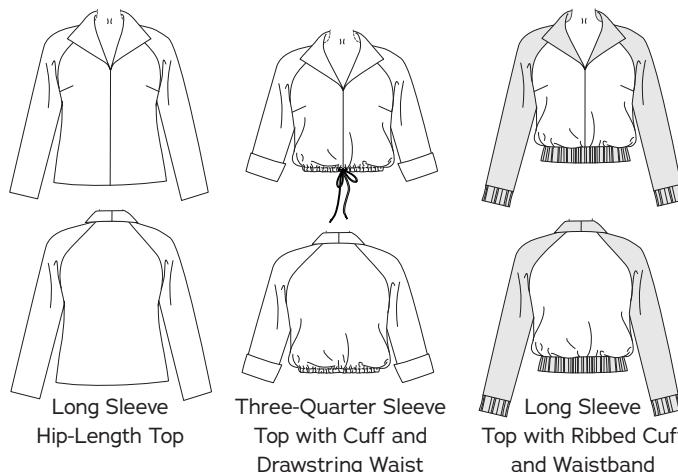


### COMBINATION IDEAS

- Long Sleeve Hip-Length Top
- Long Sleeve Top with Drawstring Waist
- Long Sleeve Top with Ribbed Cuff and Waistband
- Three-Quarter Sleeve Hip-Length Top with Cuff
- Three-Quarter Sleeve Top with Cuff and Drawstring Waist

I'm thrilled to bring you the Lizabeth Raglan Top, named for ravishing actress Lizabeth Scott, who starred alongside Elvis Presley in the 1957 film *Loving You*. Lizabeth's smart blouses made me long for a versatile wing-collar top to add to our pattern library. The Lizabeth Raglan Top has a dramatic collar, clever inset raglan sleeves, and a variety of sleeve and waist finishing options. Make it hip-length for a blouse that's perfect to tuck in or cinch with an elastic belt. Try the cropped drawstring waist version, which looks especially chic with the three-quarter cuffed sleeves and layered over our Barbie Turtleneck. Or add the ribbed waistband and cuff for a pullover bomber jacket look. One of the things I love about this top is that you can use contrast fabrics to give it a totally different feel—I made my Elvis-inspired version in pink plaid for the body with black sleeves and black ribbed cuffs and waistband. Pair with two-tone penny loafers for a look worthy of the King himself!

xxxxo, *Gertie*



### KEY SKILLS

- Understanding raglan sleeve construction
- Applying a wing collar facing
- Sewing a drawstring waist
- Working with a ribbed waistband and cuffs

## SIZE CHART

The Elizabeth Raglan Top is sized in women's US 2–20 and 18–34, A–H cup sizes. Please use the chart below to pick your size. The High Bust measurement should be taken above your breasts and the Full Bust measurement should be taken at the fullest part of your bustline. Take the waist measurement at the smallest part of your torso and the hip measurement at the widest part of your hips. Note that it is best to choose your size by your bust measurements and add or remove from the side seams at the waist if needed. If you're in our Artist, Beat Princess, or Bohemian Princess tiers, make sure to check out our first fit clinic from February to learn more about measuring yourself, choosing a size, and making fit adjustments.

Not sure which size range to choose? Read more about our [new 18–34 size range here!](#)

SIZES 2-20	2	4	6	8	10	12	14	16	18	20
High Bust	29 in 73.7 cm	31 in 78.7 cm	33 in 83.8 cm	35 in 88.9 cm	37 in 94 cm	39 in 99 cm	41 in 104.1 cm	43 in 109.2 cm	45 in 114.3 cm	47 in 119.4 cm
Bust A cup	30.5 in 77.5 cm	32.5 in 82.5 cm	34.5 in 87.6 cm	36.5 in 92.7 cm	38.5 in 97.8 cm	40.5 in 102.9 cm	42.5 in 108 cm	44.5 in 113 cm	46.5 in 118.1 cm	48.5 in 123.2 cm
Bust B/C cup	31 in 78.7 cm	33 in 83.8 cm	35 in 88.9 cm	37 in 94 cm	39 in 99 cm	41 in 104.1 cm	43 in 109.2 cm	45 in 114.3 cm	47 in 119.4 cm	49 in 124.5 cm
Bust D/DD cup	32 in 81.3 cm	34 in 86.4 cm	36 in 91.4 cm	38 in 96.5 cm	40 in 101.6 cm	42 in 106.7 cm	44 in 111.8 cm	46 in 116.8 cm	48 in 121.9 cm	50 in 127 cm
Bust F/G cup	33 in 83.8 cm	35 in 88.9 cm	37 in 94 cm	39 in 99 cm	41 in 104.1 cm	43 in 109.2 cm	45 in 114.3 cm	47 in 119.4 cm	49 in 124.5 cm	51 in 129.5 cm
Bust H cup	34 in 86.4 cm	36 in 91.4 cm	38 in 96.5 cm	40 in 101.6 cm	42 in 106.7 cm	44 in 111.8 cm	46 in 116.8 cm	48 in 121.9 cm	50 in 127 cm	52 in 132.1 cm
Waist	24 in 61 cm	26 in 66 cm	28 in 71.1 cm	30 in 76.2 cm	32 in 81.3 cm	34 in 86.4 cm	36 in 91.4 cm	38 in 96.5 cm	40 in 101.6 cm	42 in 106.7 cm
Hips	36 in 91.4 cm	38 in 96.5 cm	40 in 101.6 cm	42 in 106.7 cm	44 in 111.8 cm	46 in 116.8 cm	48 in 121.9 cm	50 in 127 cm	52 in 132.1 cm	54 in 137.2 cm

SIZES 18-34	18	20	22	24	26	28	30	32	34
High Bust	39.5 in 100.3 cm	41.5 in 105.4 cm	43.5 in 110.5 cm	45.5 in 115.6 cm	47.5 in 120.7 cm	49.5 in 125.7 cm	51.5 in 130.8 cm	53.5 in 135.9 cm	55.5 in 141 cm
Bust A/B cup	42.5 in 108 cm	44.5 in 113 cm	46.5 in 118.1 cm	48.5 in 123.2 cm	50.5 in 128.3 cm	52.5 in 133.4 cm	54.5 in 138.4 cm	56.5 in 143.5 cm	58.5 in 148.6 cm
Bust C cup	43 in 109.2 cm	45 in 114.3 cm	47 in 119.4 cm	49 in 124.5 cm	51 in 129.5 cm	53 in 134.6 cm	55 in 139.7 cm	57 in 144.8 cm	59 in 149.9 cm
Bust D/DD cup	44 in 111.8 cm	46 in 116.8 cm	48 in 121.9 cm	50 in 127 cm	52 in 132.1 cm	54 in 137.2 cm	56 in 142.2 cm	58 in 147.3 cm	60 in 152.4 cm
Bust F/G cup	45 in 114.3 cm	47 in 119.4 cm	49 in 124.5 cm	51 in 129.5 cm	53 in 134.6 cm	55 in 139.7 cm	57 in 144.8 cm	59 in 149.9 cm	61 in 154.9 cm
Bust H cup	46 in 116.8 cm	48 in 121.9 cm	50 in 127 cm	52 in 132.1 cm	54 in 137.2 cm	56 in 142.2 cm	58 in 147.3 cm	60 in 152.4 cm	62 in 157.5 cm
Waist	40 in 101.6 cm	42 in 106.7 cm	44 in 111.8 cm	46 in 116.8 cm	48 in 121.9 cm	50 in 127 cm	52 in 132.1 cm	54 in 137.2 cm	56 in 142.2 cm
Hips	48 in 121.9 cm	50 in 127 cm	52 in 132.1 cm	54 in 137.2 cm	56 in 142.2 cm	58 in 147.3 cm	60 in 152.4 cm	62 in 157.5 cm	64 in 162.6 cm

## FABRIC NOTES

We recommend light- to medium-weight wovens: cottons like sateen, chambray, shirting, lightweight twill, and broadcloth; linen and linen blends; wool suiting, flannel, and gabardine. Stretch wovens (like sateen or suiting blended with spandex) are suitable, but knit fabrics like jersey are not recommended for this design. For ribbed waistband and cuffs: ribbed knit yardage or trim (see Resources).

## MATERIALS & NOTIONS

- Fabric for shirt
- Contrast fabric for sleeves and collar facing (optional)
- Thread to match fabric
- Lightweight fusible interfacing (look for knit, weft, or tricot types)
- Ribbed knit (ribbed waistband and cuff version only)
- Two size 00 to size 1 grommets and grommet setter (drawstring version only)
- 3 yards cord for drawstring version only (We used 2-3 mm cord

but any diameter that fits through your grommets will work.)



## RESOURCES

Here are some of the fabrics and supplies I used for the samples and in the video tutorial. There are lots of places to purchase fabric, so this is solely a guide you can use as a reference:

[Italian Wool Plaid Suiting \(Gertie's pink version\)](#)

[Wool gabardine \(Gertie's pink top\)](#)

[Ribbing Knit Fabric](#) (this is sold in 40-in x 8-in strips; I used two pieces for my pink and black top)

[Italian Chestnut, Ginger Snap and Ruby Wool Coating \(Naty's brown top\)](#)

[Wool Gabardine \(Naty's brown top\)](#)

[Italian Stretch Cotton Sateen \(Gertie's red top\)](#)

[Virgin Wool Plaid \(Susie's blue top\)](#)

[Kam Professional Table Press](#)

[4 mm Hole Cutting Die for Kam Professional Table Press](#)

[5.1 mm Grommet Dies for Kam Professional Table Press](#)



## FIT NOTES

The Elizabeth Raglan Top is a pullover blouse with a generous amount of ease through the bust, waist, and upper hip. The hip-length version is designed to be worn as a loose-fitting top and can be tucked in or worn with an elastic belt. Alternatively, for a more cinched effect, it can be made with the drawstring waist or ribbed waistband options to give a cropped, close-fitting waist with a bloused effect. The hip-length top has 6 in (15.2 cm) of ease in bust, 11 in (27.9 cm) of ease in the waist, and 7 in (17.8 cm) of ease in the hem circumference. The ribbed waistband has 1.5 in (3.8 cm) of negative ease.

## FINISHED MEASUREMENTS

Sizes	2-20	2	4	6	8	10	12	14	16	18	20
Bust A	36.5 in 92.7 cm	38.5 in 97.8 cm	40.5 in 102.9 cm	42.5 in 108 cm	44.5 in 113 cm	46.5 in 118.1 cm	48.5 in 123.2 cm	50.5 in 128.3 cm	52.5 in 133.4 cm	54.5 in 138.4 cm	
Bust B/C	37 in 94 cm	39 in 99.1 cm	41 in 104.1 cm	43 in 109.2 cm	45 in 114.3 cm	47 in 119.4 cm	49 in 124.5 cm	51 in 129.5 cm	53 in 134.6 cm	55 in 139.7 cm	
Bust D/DD	38 in 96.5 cm	40 in 101.6 cm	42 in 106.7 cm	44 in 111.8 cm	46 in 116.8 cm	48 in 121.9 cm	50 in 127 cm	52 in 132.1 cm	54 in 137.2 cm	56 in 142.2 cm	
Bust F/G	39 in 99.1 cm	41 in 104.1 cm	43 in 109.2 cm	45 in 114.3 cm	47 in 119.4 cm	49 in 124.5 cm	51 in 129.5 cm	53 in 134.6 cm	55 in 139.7 cm	57 in 144.8 cm	
Bust H	40 in 101.6 cm	42 in 106.7 cm	44 in 111.8 cm	46 in 116.8 cm	48 in 121.9 cm	50 in 127 cm	52 in 132.1 cm	54 in 137.2 cm	56 in 142.2 cm	58 in 147.3 cm	
Waist	35 in 88.9 cm	37 in 94 cm	39 in 99.1 cm	41 in 104.1 cm	43 in 109.2 cm	45 in 114.3 cm	47 in 119.4 cm	49 in 124.5 cm	51 in 129.5 cm	53 in 134.6 cm	
Open- ing	41 in 104.1 cm	43 in 109.2 cm	45 in 114.3 cm	47 in 119.4 cm	49 in 124.5 cm	51 in 129.5 cm	53 in 134.6 cm	55 in 139.7 cm	57 in 144.8 cm	59 in 149.9 cm	
Front Length (Full)	24.25 in 61.6 cm	24.5 in 62.2 cm	24.5 in 62.2 cm	24.75 in 62.9 cm	24.75 in 62.9 cm	25 in 63.5 cm	25 in 63.5 cm	25.25 in 64.1 cm	25.25 in 64.1 cm	25.5 in 64.8 cm	
Front Length (Crop)	19.75 in 50.2 cm	20 in 50.8 cm	20 in 50.8 cm	20.25 in 51.4 cm	20.25 in 51.4 cm	20.5 in 52.1 cm	20.5 in 52.1 cm	20.75 in 52.7 cm	20.75 in 52.7 cm	21 in 53.3 cm	
Bicep	13.75 in 34.9 cm	14.5 in 36.8 cm	15 in 38.1 cm	15.75 in 40 cm	16.25 in 41.3 cm	17 in 43.2 cm	17.5 in 44.5 cm	18.25 in 46.4 cm	18.75 in 47.6 cm	19.5 in 49.5 cm	

Sizes	18-34	18	20	22	24	26	28	30	32	34
Bust A/B	50.5 in 128.3 cm	52.5 in 133.4 cm	54.5 in 138.4 cm	56.5 in 143.5 cm	58.5 in 148.6 cm	60.5 in 153.7 cm	62.5 in 158.8 cm	64.5 in 163.8 cm	66.5 in 168.9 cm	
Bust C	51 in 129.5 cm	53 in 134.6 cm	55 in 139.7 cm	57 in 144.8 cm	59 in 149.9 cm	61 in 154.9 cm	63 in 160 cm	65 in 165.1 cm	67 in 170.2 cm	
Bust D/DD	52 in 132.1 cm	54 in 137.2 cm	56 in 142.2 cm	58 in 147.3 cm	60 in 152.4 cm	62 in 157.5 cm	64 in 162.6 cm	66 in 167.6 cm	68 in 172.7 cm	
Bust F/G	53 in 134.6 cm	55 in 139.7 cm	57 in 144.8 cm	59 in 149.9 cm	61 in 154.9 cm	63 in 160 cm	65 in 165.1 cm	67 in 170.2 cm	69 in 175.3 cm	
Bust H	54 in 137.2 cm	56 in 142.2 cm	58 in 147.3 cm	60 in 152.4 cm	62 in 157.5 cm	64 in 162.6 cm	66 in 167.6 cm	68 in 172.7 cm	70 in 177.8 cm	
Waist	50 in 127 cm	52 in 132.1 cm	54 in 137.2 cm	56 in 142.2 cm	58 in 147.3 cm	60 in 152.4 cm	62 in 157.5 cm	64 in 162.6 cm	66 in 167.6 cm	
Open- ing	53 in 134.6 cm	55 in 139.7 cm	57 in 144.8 cm	59 in 149.9 cm	61 in 154.9 cm	63 in 160 cm	65 in 165.1 cm	67 in 170.2 cm	69 in 175.3 cm	
Front Length (Full)	27.75 in 70.5 cm	27.75 in 70.5 cm	28 in 71.1 cm	28 in 71.1 cm	28.25 in 71.8 cm	28.25 in 71.8 cm	28.5 in 72.4 cm	28.5 in 72.4 cm	28.75 in 73 cm	
Front Length (Crop)	22.75 in 57.8 cm	22.75 in 57.8 cm	23 in 58.4 cm	23 in 58.4 cm	23.25 in 59.1 cm	23.25 in 59.1 cm	23.5 in 59.7 cm	23.5 in 59.7 cm	23.75 in 60.3 cm	
Bicep	17.75 in 44.1 cm	18.25 in 46.4 cm	19 in 48.3 cm	19.5 in 49.5 cm	20.25 in 51.4 cm	20.75 in 52.7 cm	21.5 in 54.6 cm	22 in 55.9 cm	22.75 in 57.8 cm	



# REQUIRED YARDAGE & CUTTING LAYOUTS

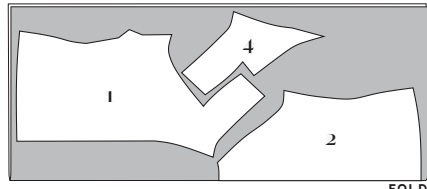
**Note:** All pattern pieces are shown in a “without nap” layout. You may need additional yardage for directional prints, stripes, plaids, and other prints that need to be matched across seamlines.

## RAGLAN TOP (NOT INCLUDING THE SLEEVES)

### Hip-Length Top

Fabric (1, 2, 4)

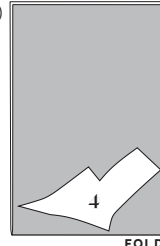
	Sizes 2-10	Sizes 12-20
45 in	1 <sup>5</sup> / <sub>8</sub> yds 1.5 m	1 <sup>3</sup> / <sub>4</sub> yds 1.6 m
60 in	1 <sup>1</sup> / <sub>4</sub> yds 1.1 m	1 <sup>1</sup> / <sub>2</sub> yds 1.4 m



45 in, all sizes

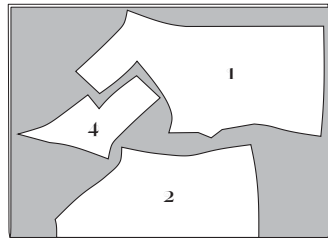
Interfacing (4)

All sizes
60 in 5 <sup>8</sup> / <sub>8</sub> yd .6 m

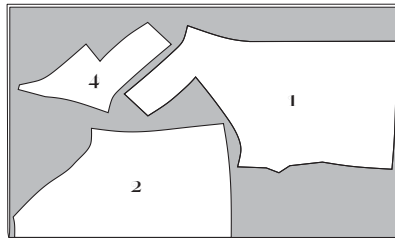


FOLD

	Sizes 18-24	Sizes 26-34
45 in	1 <sup>3</sup> / <sub>4</sub> yds 1.6 m	1 <sup>7</sup> / <sub>8</sub> yds 1.7 m
60 in	1 <sup>1</sup> / <sub>2</sub> yds 1.4 m	1 <sup>5</sup> / <sub>8</sub> yds 1.5 m



60 in, sizes 2-10

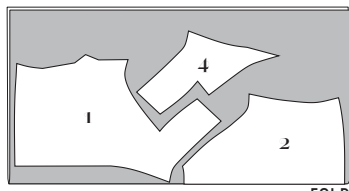


60 in, sizes 12-34

### Cropped Top

Fabric (1, 2, 4)

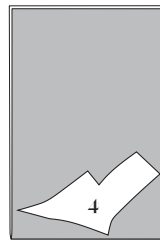
	Sizes 2-10	Sizes 12-20
45 in	1 <sup>3</sup> / <sub>8</sub> yds 1.3 m	1 <sup>3</sup> / <sub>8</sub> yds 1.3 m
60 in	1 <sup>1</sup> / <sub>8</sub> yds 1 m	1 <sup>1</sup> / <sub>4</sub> yds 1.1 m



45 in, all sizes

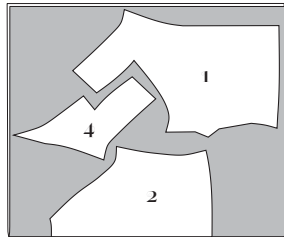
Interfacing (4)

Sizes 2-10
60 in 5 <sup>8</sup> / <sub>8</sub> yd .6 m

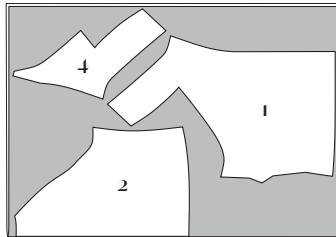


FOLD

	Sizes 18-24	Sizes 26-34
45 in	1 <sup>3</sup> / <sub>8</sub> yds 1.3 m	1 <sup>1</sup> / <sub>2</sub> yds 1.4 m
60 in	1 <sup>3</sup> / <sub>8</sub> yds 1.3 m	1 <sup>1</sup> / <sub>2</sub> yds 1.4 m



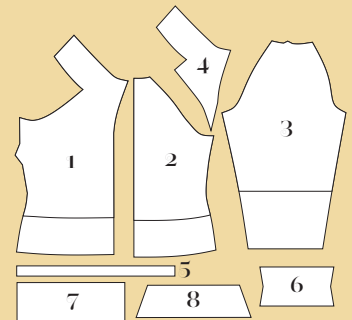
60 in, sizes 2-10



60 in, sizes 12-34

## PATTERN PIECES

- 1. Top Front**  
Cut 2 fabric
- 2. Top Back**  
Cut 1 fabric on fold
- 3. Sleeve**  
Cut 2 fabric
- 4. Front Facing**  
Cut 2 fabric, 2 interfacing
- 5. Drawstring Facing**  
Cut 2 fabric
- 6. Ribbed Cuff**  
Cut 2 ribbing
- 7. Ribbed Waistband**  
Cut 1 ribbing on fold
- 8. Three-Quarter Sleeve Cuff**  
Cut 4 fabric, 2 interfacing



### KEY TO LAYOUTS

- Right side of pattern piece
- Wrong side of pattern piece

Be sure to note whether the pieces are cut on a double or single layer of fabric. For a double layer, there will be a note indicating FOLD on the layout.

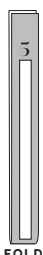
## WAIST FINISHES

### Drawstring Waist

Fabric (5)

All sizes
45 in 1/8 yd 60 in .1 m

Use this layout for 60-in WOF, sizes 2-20 and sizes 18-24.



FOLD

Use this crosswise layout for 45 in WOF, sizes 2-20 and 18-34; plus 60 in WOF for sizes 26-34.

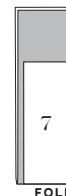


FOLD

### Ribbed Waistband

Ribbing (7)

Sizes 2-18	Size 20	Sizes 18-22	Sizes 24-34
40 in 1/4 yd .2 m	N/A*	40 in 1/4 yd .2 m	N/A*
Sizes 2-20		Sizes 18-34	
60 in 1/4 yd .2 m		60 in 1/4 yd .2 m	



FOLD

\*N/A indicates that those sizes won't fit on that WOF of ribbing.

# REQUIRED YARDAGE & CUTTING LAYOUTS (cont'd)

## SLEEVE

### Long Sleeve

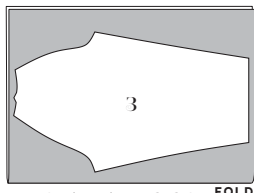
Fabric (3)

Sizes  
2-24

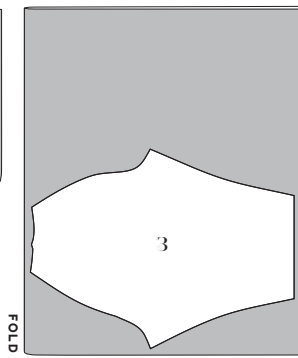
45 in	1 yd
60 in	.9 m

Sizes  
18-24

45 in	1 yd	2 yds
	.9 m	1.8 m
60 in	1 yd	1 yd
	.9 m	.9 m



45 in, sizes 2-24  
60 in, all sizes



45 in, sizes 26-34

This piece is shown on a crosswise layout. The full width of the fabric is opened out and a fold is made perpendicular to the selvages.

### Three-Quarter Sleeve

Fabric (3)

Sizes  
2-24

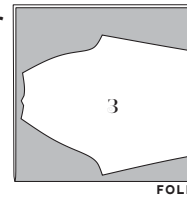
45 in	3/4 yds
	.7 m

Sizes  
18-24

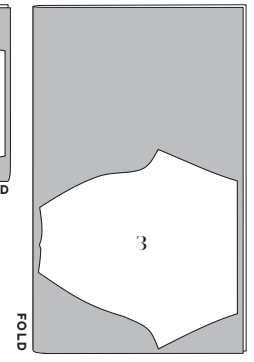
45 in	3/4 yds
	.7 m
60 in	3/4 yds
	.7 m

Sizes  
26-34

45 in	3/4 yds	3/4 yds
	.7 m	.7 m
60 in	3/4 yds	7/8 yds
	.7 m	.8 m



45 in, sizes 2-24  
60 in, all sizes



45 in, sizes 26-34

This piece is shown on a crosswise layout. The full width of the fabric is opened out and a fold is made perpendicular to the selvages.

## CUFF

### Three-Quarter Sleeve Cuff

Fabric (8)

All  
sizes

45 in	1/4 yd
60 in	.2 m



Interfacing (8)

All  
sizes

60 in	1/4 yd
	.2 m



### Ribbed Cuff

Ribbing (6)

All  
sizes

45 in	1/4 yd
60 in	.2 m



## SEWING INSTRUCTIONS

### BEFORE SEWING

**Transferring marks:** Use dressmaker's tracing paper and a tracing wheel to transfer all pattern markings to the wrong side (WS) of your fabric. Mark pattern notches by snipping into the seam allowance with the tip of your scissors.

**Interfacing:** Some of the pattern pieces need to be stabilized with fusible interfacing prior to sewing. Follow the interfacing cutting instructions on the pattern pieces. Apply fusible interfacing to the WS of the fabric, using a press cloth and steam. Do not rub your iron back and forth; lift it up and press it down for several seconds at a time until interfacing is fully adhered.

**Seam Finishing:** If finishing seams with a serger, serge the following seam allowances (without trimming the edges) before construction.

- Vertical and lower edges of top front and back
- Vertical and lower edges of sleeve
- Lower angled edge of facing
- Upper edge of drawstring facing

### NOTES

- 5/8-inch (in) (1.5 cm) seam allowances are included on all pattern pieces, except where otherwise noted.
- Consider cutting the sleeves and front facing in a contrasting fabric to play around with a very retro look. You can mix two coordinating solid colors, or try mixing a plaid or stripe with a solid. Go through your stash and have fun picking out different combinations!

## SEW THE TOP

### Top

**1. Sew bust darts:** on Top Front (1), bring dart legs right sides (RS) together, pinning along marked lines. Stitch along marked lines from dart base to dart point. Backstitch at the beginning but not at the end, leaving a thread tail a few inches long. Tie thread tails by hand. Press dart toward waistline.

**2. Reinforce and clip to pivot-point on top front:** following marked lines, staystitch along inner corner of top front. Clip diagonally to circle, cutting as close as possible to circle without cutting through stitching.

**3. Sew center-front seam:** pin top center fronts together from notch to lower edge. Stitch. Press seam allowances open.

**4. Sew side seams:** pin Top Back (2) to top fronts at side seams, matching notches. Stitch. Press seam allowances open.

**5. Sew Top Front's (1) center back collar seam:** pin collar center backs RS together, along short edge. Stitch. Press seam allowances open.

### Sleeve

**1. Sew Sleeve's (3) shoulder dart:** on shoulder, bring dart legs RS together, pinning along marked lines. Stitch along marked lines from dart base to dart point. Backstitch at the beginning but not at the end, leaving a thread tail a few inches long. Tie thread tails by hand. Press dart toward back of sleeve.

**2. Sew sleeve underarm:** pin underarm seam RS together. Stitch. Press seam allowances open.

**3. Insert sleeve into top:** pin sleeve into armhole, matching circles, notches, and underarm seams. Stitch, starting exactly at circle mark. Trim seam allowances to  $\frac{3}{8}$  in (1 cm) and finish as desired. Press toward sleeve. (Note: this step is a little tricky, since the sleeve forms an inner corner when sewn to the top front. Make sure to match the circle that you clipped exactly to the circle on the sleeve front, and start your stitching exactly at the circle marks.)

### Back Neckline

**1. Staystitch back neckline:** staystitch neckline  $\frac{1}{2}$  in (1.3 cm) from edge, between shoulder darts. Clip into seam allowance every  $\frac{1}{2}$  in around neckline.

**2. Sew back neckline:** pin collar's bottom edge to neckline, matching notches to dart and back sleeve seam, and spreading back neckline clips to match. Stitch, starting exactly at circle, so there is no gap between your previous stitching at inner corner. Grade seam allowances so that collar's is narrower and neckline's is wider. Press graded seam allowances toward collar.

### Collar Facing

**1. Reinforce and clip pivot-point on Front Facing (4):** following marked lines, staystitch along inner corner of facing as for top front. Clip diagonally to circle, cutting as close as possible to circle without cutting through stitching.

**2. Sew collar facings into ring:** pin front facing pieces RS together along short center back edge. Stitch. Press seam allowances open. On center front of facing, pin from notch to bottom edge. Stitch from notch to bottom edge, forming a ring. Press seam allowances open.

**3. Sew collar facing to top:** pin front facing to top front's collar, RS together, matching center back seams and placing a pin at the center front match point. Stitch, starting at one side of center front match point, lifting up seam allowances to stitch underneath, and ending at opposite side of match point, again stitching underneath seam allowances and making sure there is the smallest gap possible between your start and end points. Grade seam allowances so that facing's is narrower and collar's is wider. Notch seam allowances every  $\frac{1}{2}$  in (1.3 cm) or so around curves.

**4. Understitch facing:** with front facing opened out and seam allowances underneath, stitch along facing  $\frac{1}{8}$  in (3 mm) from the seamline on top front collar's RS, catching seam allowances in stitching. Start understitching just above center front opening and end at opposite side, breaking stitching at points as necessary. Press facing to inside of top, rolling seamline slightly to WS so it is hidden inside the top.

**5. Secure facings:** from WS of top, turn under facing neckline and shoulder seam allowances  $\frac{5}{8}$  in (1.5 cm) and press to WS of facing. Pin facing in place along inner neckline seam and front raglan seam, just covering seamline and pinning from RS of top. From RS, stitch just next to seamline on top front, stitching where pinned and pivoting at corner. (Note: this edgestitching has a dual purpose: it secures the facing underneath and also reinforces the inner corner.) Tack facing by hand at center front neckline.

## SLEEVE FINISHING

*Proceed to the sleeve style of your choice below.*

### Long Sleeve

**1. Hem sleeve:** turn under sleeve's hem allowance  $\frac{5}{8}$  in (1.5 cm) and press in place. Pin. Stitch, using a  $\frac{1}{2}$ -in (1.3 cm) seam allowance.

*Proceed to Top Finishing, page 10.*

### Long Sleeve with Ribbed Cuff

**1. Construct Ribbed Cuffs (6):** fold cuff RS together and form a ring, pinning together at short ends. Stitch using a zigzag stitch, and making sure to follow angled shape of seam and pivot slightly at the notch. Press seam allowances open. Pin raw edges of cuff WS together and baste, using a  $\frac{1}{2}$ -in (1.3 cm) seam allowance.

**2. Sew cuff to sleeve:** with RS together, pin cuff to sleeve, matching notches and seams. Stitch using a zigzag, stretching cuff to fit sleeve. Trim seam allowances to  $\frac{3}{8}$  in (1 cm) and finish as desired. Turn cuff down and press seam allowances toward sleeve.

*Proceed to Top Finishing, at right.*

### Three-Quarter Sleeve with Cuff

Note that you will have two sets of cuffs, one with interfacing and one without. The interfaced cuff will become the outermost layer, while the uninterfaced cuff will form the cuff facing.

**1. Sew cuff into ring:** pin each interfaced cuff RS together along short edges, forming a ring. Stitch. Press seam allowances open. Repeat with uninterfaced cuffs.

**2. Sew cuff to cuff facings:** with RS together, pin interfaced and uninterfaced cuff along upper edge, matching seamlines. Stitch. Grade seam allowances so uninterfaced cuff's seam allowance is narrower and interfaced cuff's seam allowance is wider.

**3. Understitch facing:** with the cuff facing opened out and seam allowances underneath, stitch along the facing  $\frac{1}{8}$  in (3 mm) from the seamline on facing's RS, catching seam allowances in stitching. Press, rolling seamline slightly to WS so it is hidden inside the cuff.

**4. Baste cuff seam allowance:** fold cuff WS together and pin raw edges together. Baste, using a long stitch and a  $\frac{1}{2}$ -in seam allowance.

**5. Sew cuff to sleeve:** pin RS of cuff to WS of sleeve, matching seams and notches. Stitch. Trim seam allowances to  $\frac{3}{8}$  in (1 cm).

**6. Understitch cuff:** with the cuff opened out from the sleeve and seam allowances underneath, stitch  $\frac{1}{8}$  in (3 mm) from the seamline on cuff from the WS, catching seam allowances in stitching. Turn the cuff to sleeve's RS and press lower edge of cuff from WS.

*Proceed to next section.*

## TOP FINISHING

Proceed to the finishing style of your choice below.

### Hip-Length Top

**1. Hem top:** turn under top's hem allowance  $\frac{5}{8}$  in (1.5 cm) and press in place. Pin. Stitch, using a  $\frac{1}{2}$ -in (1.3 cm) seam allowance.

### Ribbed Waistband

**1. Construct Ribbed Waistband (7):** fold ribbed waistband piece RS together, pinning together at short ends, to form a ring. Zigzag stitch the seam. Press seam allowances open. Fold in half lengthwise, WS together. Pin raw edges of waistband together, matching notches and center back seam. Baste, using a  $\frac{1}{2}$ -in (1.3 cm) seam allowance and a long zigzag stitch.

**2. Sew waistband to top:** with RS together, pin waistband to top, pinning only at notches and seams. Stitch using a zigzag, stretching waistband to fit



top. Trim seam allowances to  $\frac{3}{8}$  in (1 cm) and finish as desired. Turn waistband down and press seam allowances toward top.

## Drawstring Waistband

- 1. Set grommets into top front:** following manufacturer's directions for your grommet setter, set grommets as marked on top's center front waistline.
- 2. Sew Drawstring Facing (5):** pin drawstring facing RS together at short ends, forming a ring. Stitch. Press seam allowances open.
- 3. Sew drawstring facing to top:** pin drawstring facing to top waistline, RS together, matching notches and center back seams. Stitch. Grade seam allowances so that top's seam allowance is wider and facing's seam allowance is narrower.
- 4. Understitch drawstring facing:** with the facing opened out and seam allowances underneath, stitch

along the facing  $\frac{1}{8}$  in (3 mm) from the seamline on facings's RS, catching seam allowances in stitching. Press facing to inside of top, rolling seamline slightly to WS so it is hidden inside the top. Pin facing to top.

**5. Topstitch drawstring facing to form casing:** stitch  $\frac{5}{8}$  in (1.5 cm) from pinned edge of facing, creating a channel. Take care when stitching near the grommets to avoid breaking your needle.

**6. Thread cord through channel:** cut cording approximately 36 in (91.4 cm) longer than waist circumference and insert cording into waistline channel through grommets, using a bodkin or a safety pin to thread it through casing. If you have trouble getting the cord through the grommets, simply unstitch the facing at center front and insert cording through the opening, then stitch facing back in place once cording is threaded. Try on top and cut ties to desired length, tying knots at the ends of the ties.

*Enjoy your lovely new Lizabeth Raglan Top!*

## TILING MAPS

### SIZES 2-20

PAGE 1	PAGE 4	PAGE 7	PAGE 11	PAGE 15	PAGE 20	PAGE 25	PAGE 33	PAGE 38	PAGE 46	PAGE 51	PAGE 59	PAGE 64	PAGE 69	PAGE 73	PAGE 77	PAGE 81			
PAGE 2	PAGE 5	PAGE 8	PAGE 12	PAGE 16	PAGE 21	PAGE 26	PAGE 34	PAGE 39	PAGE 47	PAGE 52	PAGE 60	PAGE 65	PAGE 70	PAGE 74	PAGE 78	PAGE 82			
PAGE 3	PAGE 6	PAGE 9	PAGE 13	PAGE 17	PAGE 22	PAGE 27	PAGE 30	PAGE 35	PAGE 40	PAGE 43	PAGE 48	PAGE 53	PAGE 56	PAGE 61	PAGE 66	PAGE 71	PAGE 75	PAGE 79	PAGE 83
PAGE 10	PAGE 14	PAGE 18	PAGE 23	PAGE 28	PAGE 31	PAGE 36	PAGE 41	PAGE 44	PAGE 49	PAGE 54	PAGE 57	PAGE 62	PAGE 67	PAGE 72	PAGE 76	PAGE 80	PAGE 84		
PAGE 19	PAGE 24	PAGE 29	PAGE 32	PAGE 37	PAGE 42	PAGE 45	PAGE 50	PAGE 55	PAGE 58	PAGE 63	PAGE 68								

### SIZES 18-34

PAGE 1	PAGE 6	PAGE 11	PAGE 16	PAGE 21	PAGE 26	PAGE 31	PAGE 36	PAGE 41	PAGE 46	PAGE 51	PAGE 56	PAGE 61	PAGE 66	PAGE 71	PAGE 77	PAGE 83	PAGE 89	PAGE 95
PAGE 2	PAGE 7	PAGE 12	PAGE 17	PAGE 22	PAGE 27	PAGE 32	PAGE 37	PAGE 42	PAGE 47	PAGE 52	PAGE 57	PAGE 62	PAGE 67	PAGE 72	PAGE 78	PAGE 84	PAGE 90	PAGE 96
PAGE 3	PAGE 8	PAGE 13	PAGE 18	PAGE 23	PAGE 28	PAGE 33	PAGE 38	PAGE 43	PAGE 48	PAGE 53	PAGE 58	PAGE 63	PAGE 68	PAGE 74	PAGE 80	PAGE 86	PAGE 92	PAGE 98
PAGE 4	PAGE 9	PAGE 14	PAGE 19	PAGE 24	PAGE 29	PAGE 34	PAGE 39	PAGE 44	PAGE 49	PAGE 54	PAGE 59	PAGE 64	PAGE 69	PAGE 75	PAGE 81	PAGE 87	PAGE 93	PAGE 99
PAGE 5	PAGE 10	PAGE 15	PAGE 20	PAGE 25	PAGE 30	PAGE 35	PAGE 40	PAGE 45	PAGE 50	PAGE 55	PAGE 60	PAGE 65	PAGE 70	PAGE 76	PAGE 82	PAGE 88	PAGE 94	PAGE 100

# PATTERN PIECE LOCATION GUIDE

Here is a list to help you locate the pattern pieces on the letter-size tiled pages and A0 pattern sheets.  
The tiled pieces and A0 sheets are included as separate pdf files as part of this digital pattern.

## SIZES 2-20

PC#	Piece Name	Tiled	A0
-----	------------	-------	----

### Top, A Cup

1	Top Front, A Cup	7-18	1
4	Front Facing, A-C Cup	20-21, 25-26	4

### Top, B/C Cup

1	Top Front, B/C Cup	17-19, 21-24, 26-29	1
---	--------------------	---------------------	---

### Top, D/DD Cup

1	Top Front, D/DD Cup	30-32, 34-37, 39-42	2
4	Front Facing, D/DD Cup	33-34, 38-39	4

### Top, F/G Cup

1	Top Front, F/G Cup	43-45, 47-50, 52-55	2
4	Front Facing, F/G Cup	46-47, 51-52	4

### Top, H Cup

1	Top Front, H Cup	56-58, 60-63, 65-68	3
4	Front Facing, H Cup	59-60, 64-65	4

### Top, all cups

2	Top Back	1-6, 8-9	3
3	Sleeve (long length)	69-80, 82	4
3	Sleeve (three-quarter length)	69-71, 73-75, 77-79, 82	4

### Waist options

5	Drawstring Facing	1-3	3
7	Ribbed Waistband	72, 76, 80	3

### Cuff options

6	Ribbed Cuff	83-84	2
8	Three-Quarter Sleeve Cuff	81-82	3

## Raglan Top Cup Size Printing Guide, sizes 2-20

A Cup: 7-18, 20-21, 25-26

Cropped version: 8-10, 12-14, 16-18, 20-21, 25-26

B/C Cup: 17-29

Cropped version: 17-18, 20-23, 25-28

D/DD Cup: 30-42

Cropped version: 30-31, 33-36, 38-41

F/G Cup: 43-55

Cropped version: 43-44, 46-49, 51-54

H Cup: 56-68

Cropped version: 56-57, 59-62, 64-67

All Cups: 1-6, 8-9

Cropped version: 1-6, 8-9

## SIZES 18-34

PC#	Piece Name	Tiled	A0
-----	------------	-------	----

### Top, A/B Cup

1	Top Front, A/B Cup	3-10, 12-15	1
4	Front Facing, A-C Cup	11-12, 16-18, 22-23	2

### Top, C Cup

1	Top Front, C Cup	18-25, 27-30	2
---	------------------	--------------	---

### Top, D/DD Cup

1	Top Front, D/DD Cup	33-40, 42-45	3
4	Front Facing, D/DD Cup	26-27, 31-33, 37-38	3

### Top, F/G Cup

1	Top Front, F/G Cup	48-55, 57-60	4
4	Front Facing, F/G Cup	41-42, 46-48, 52-53	4

### Top, H Cup

1	Top Front, H Cup	63-70, 73-76	5
4	Front Facing, H Cup	56-57, 61-63, 67-68	6

### Top, all cups

2	Top Back	79-82, 85-88, 92-94	5
3	Sleeve (long length)	71-73, 77-79, 83-85, 89-91, 95-97	6
3	Sleeve (three-quarter length)	71-73, 77-79, 83-85, 89-91	6

### Waist options

5	Drawstring Facing	16, 21, 26, 31, 36	1
7	Ribbed Waistband	98-100	1

### Cuff options

6	Ribbed Cuff	6, 11	1
8	Three-Quarter Sleeve Cuff	1-3	1

## Raglan Top Cup Size Printing Guides, sizes 18-34

A/B Cup: 3-18, 22-23

Cropped version: 3-4, 6-9, 11-14, 16-18, 22-23

C Cup: 11-12, 16-25, 27-30

Cropped version: 11-12, 16-19, 21-24, 27-29

D/DD Cup: 26-27, 31-40, 42-45

Cropped version: 26-27, 31-34, 36-39, 42-44

F/G Cup: 41-42, 46-55, 57-60

Cropped version: 41-42, 46-49, 51-54, 57-59

H Cup: 56-57, 61-70, 73-76

Cropped version: 56-57, 61-64, 66-69, 73-75

All Cups: 79-82, 85-88, 92-94

Cropped version: 79-81, 85-87, 92-93



## HOW TO USE THIS PATTERN

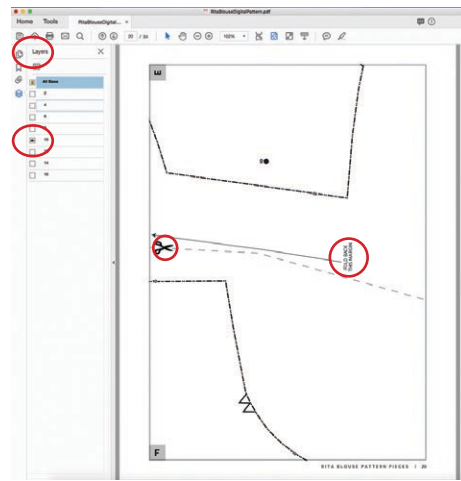
The pattern pieces are tiled so you can print them on Letter (8½" x 11") or A4 size paper. You can also send the A0 pattern sheet PDF to a local or online printer (like [www.pdfplotting.com](http://www.pdfplotting.com)) to print on large sheets (36" x 48" for U.S. or A0 for international).

This pattern includes size layers. To get the best results, open either the Tiled or A0 pattern pieces PDF in Acrobat Reader.

Open the Layers Palette (View> Show/Hide>Navigation Panes>Layers) and hide all of the layer(s) except for the ones you want to print by clicking

on the eye icon.

The All Sizes layer has general pattern information and will always print.



## WORKING WITH THE TILED PIECES

Go to File>Print and change the page range to the pages you need for the pieces you've chosen (see Pattern Pieces Printing Index). Make sure the Page Sizing settings to 100% or Actual Size. Test this after printing by measuring the 1" test box on the first page of the bodice pattern pieces.

Cut apart any pattern pieces that share a page by cutting on the gray long dashed lines. Then fold back the page margins on each page as directed.

Tape the pages together, butting up the folded page edges with the gray margin lines, matching up the letters in gray boxes.

## MORE FROM GERTIE

**On Instagram:** Stay in the loop and get inspired.

**On YouTube:** Learn beginner and advanced sewing skills and techniques through my tutorials, watch episodes of my Gertie's World series, and join regular live streams.

**On Patreon:** Access monthly patterns and tutorial videos.

**At CharmPatterns.com:** Shop my sewing patterns and accessories.

