



Gardner Top

Sizes 2-20
with cup sizes A-H

5/8 inch (in) (1.5 cm) seam allowances
are included on all pattern pieces.

PATTERN SIZE KEY

- 2 —————
- 4 - - - - -
- 6 ······
- 8 - · - · - ·
- 10 ······
- 12 - - - - -
- 14 ······
- 16 - · - · - ·
- 18 - - - - -
- 20 ······

SYMBOL KEY

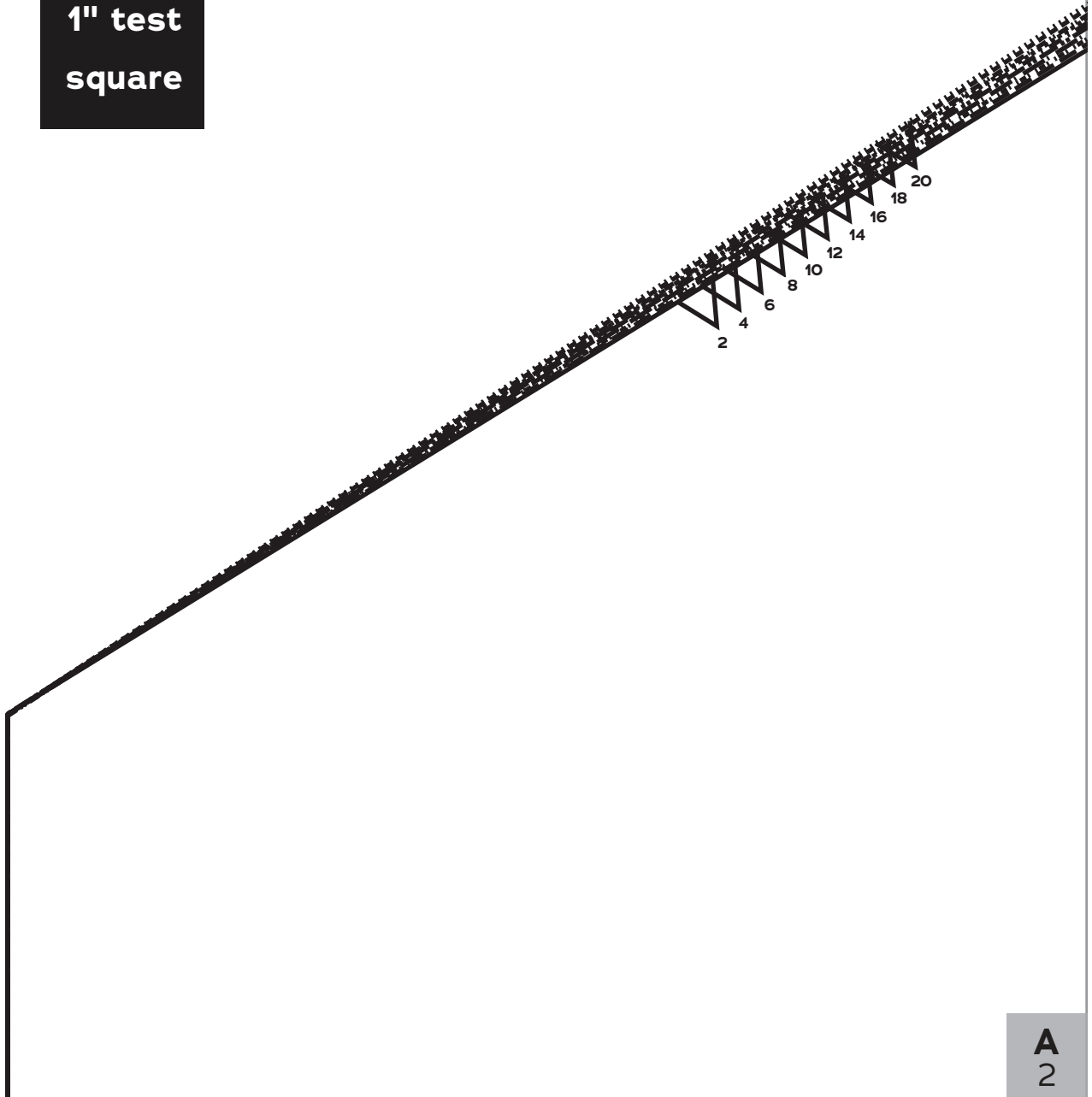
grainline arrow



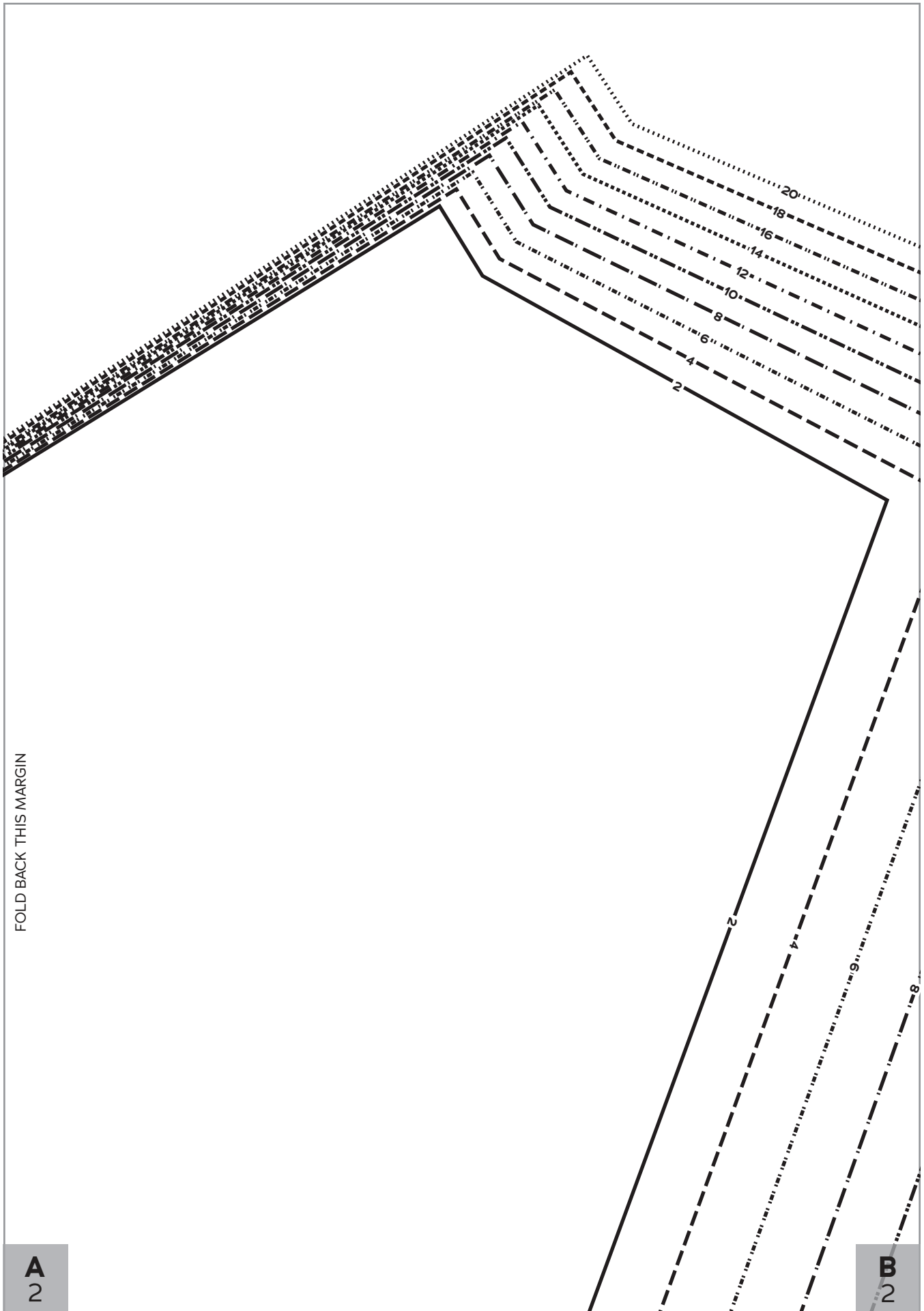
match point/
placement mark



**1" test
square**



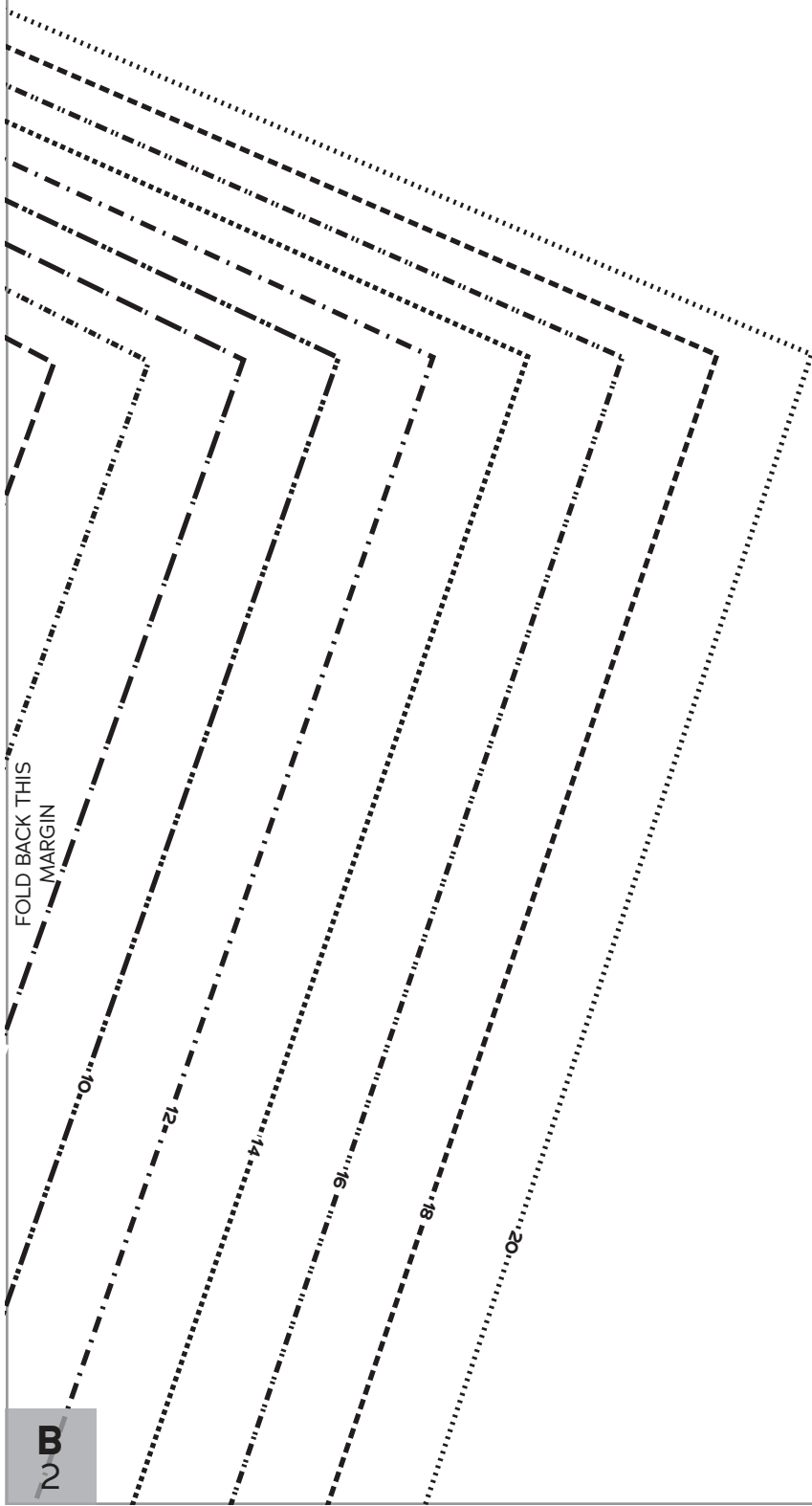
**A
2**



FOLD BACK THIS MARGIN

A
2

B
2



FOLD BACK THIS MARGIN

A
2



Gardner
Top

2

Top Back

Cut 1 fabric on fold



FOLD

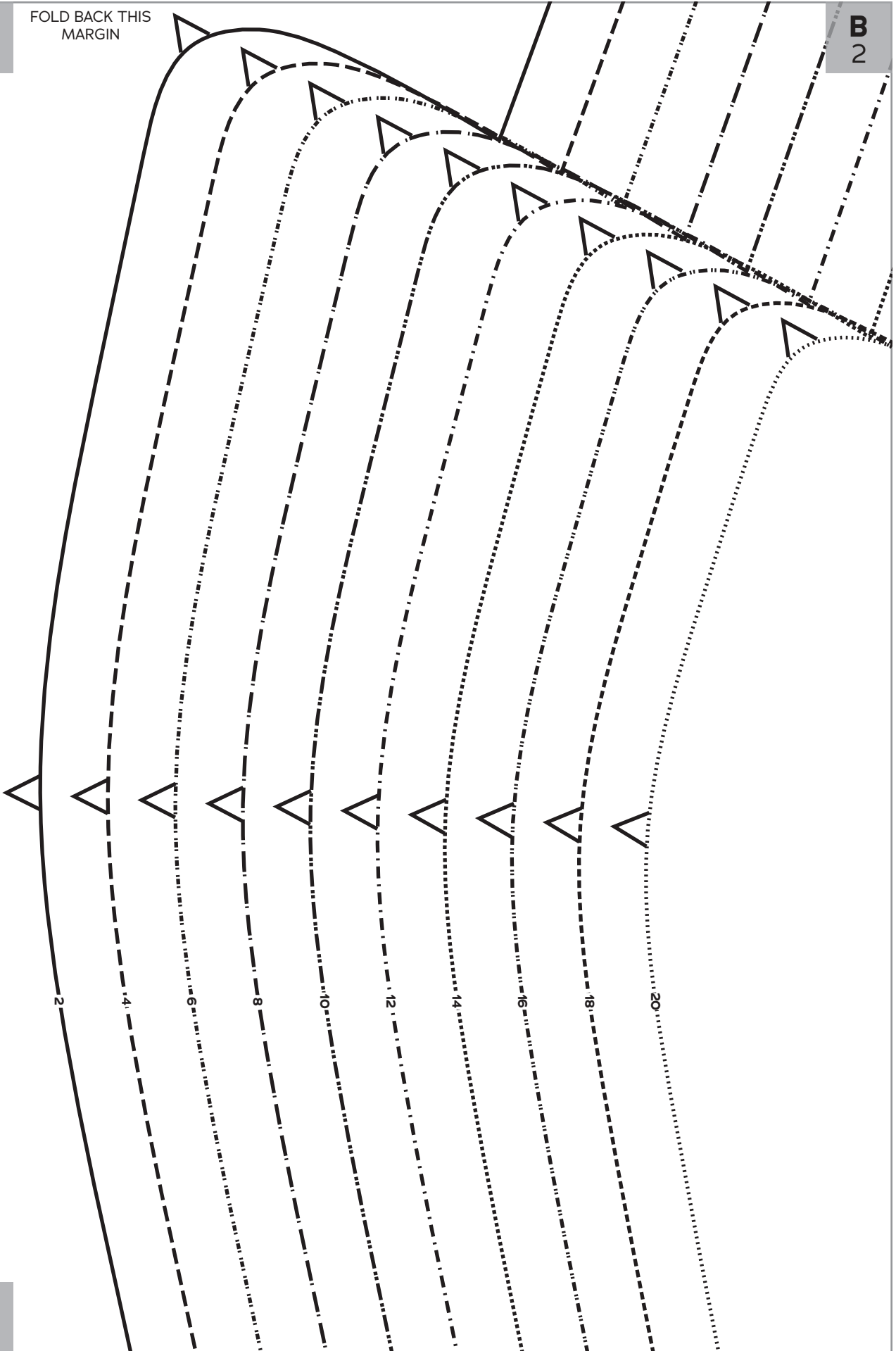
C
2

A
2

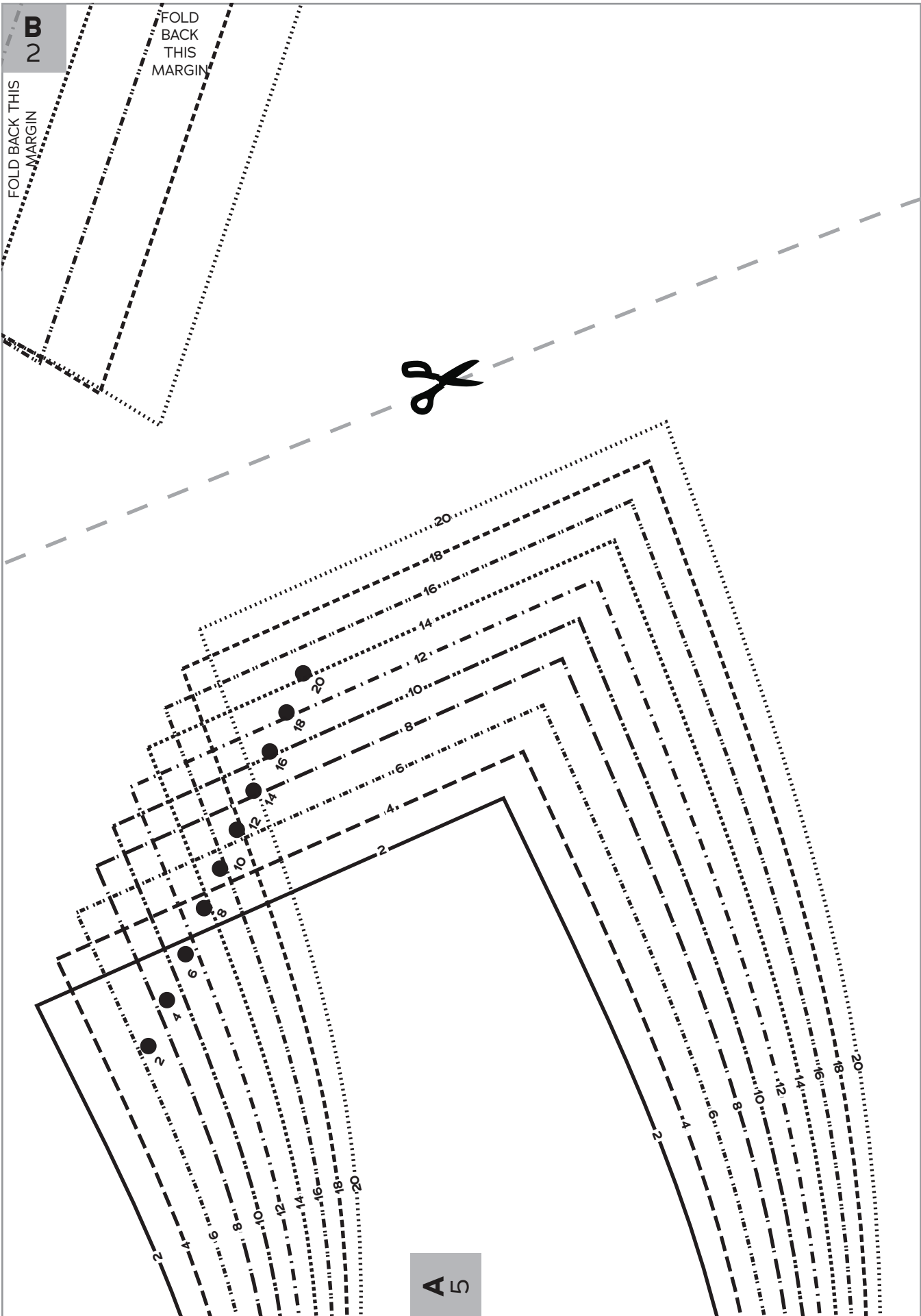
FOLD BACK THIS MARGIN

B
2

FOLD BACK THIS MARGIN

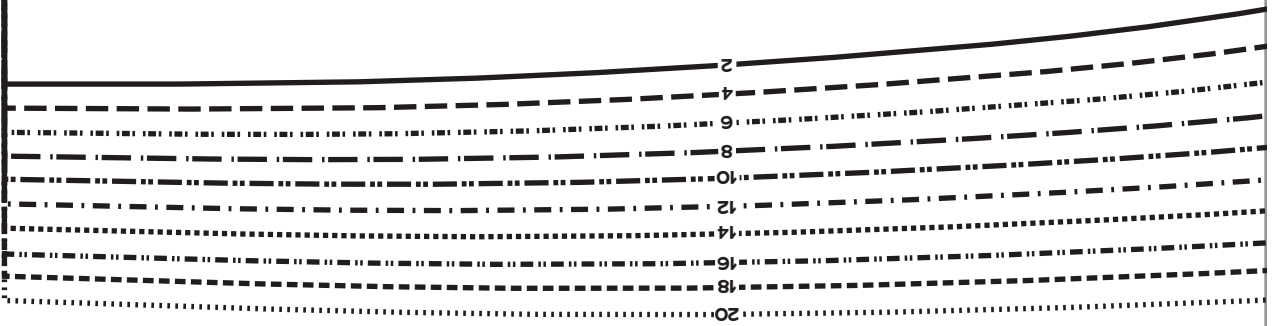


C



FOLD BACK THIS MARGIN

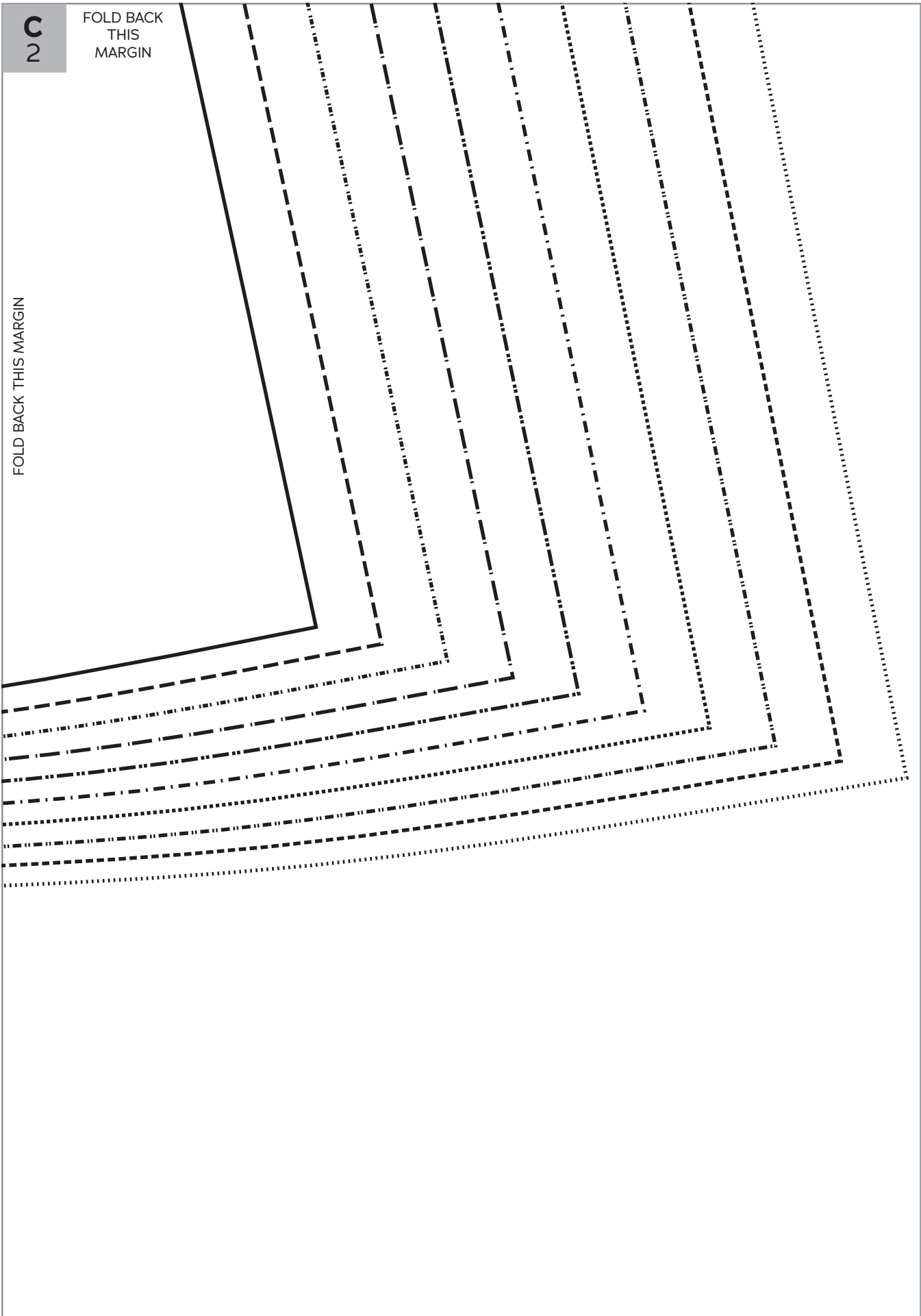
C
2



2

FOLD BACK
THIS
MARGIN

FOLD BACK THIS MARGIN



FOLD BACK THIS MARGIN

A 5

GRAINLINE

5

Upper Collar

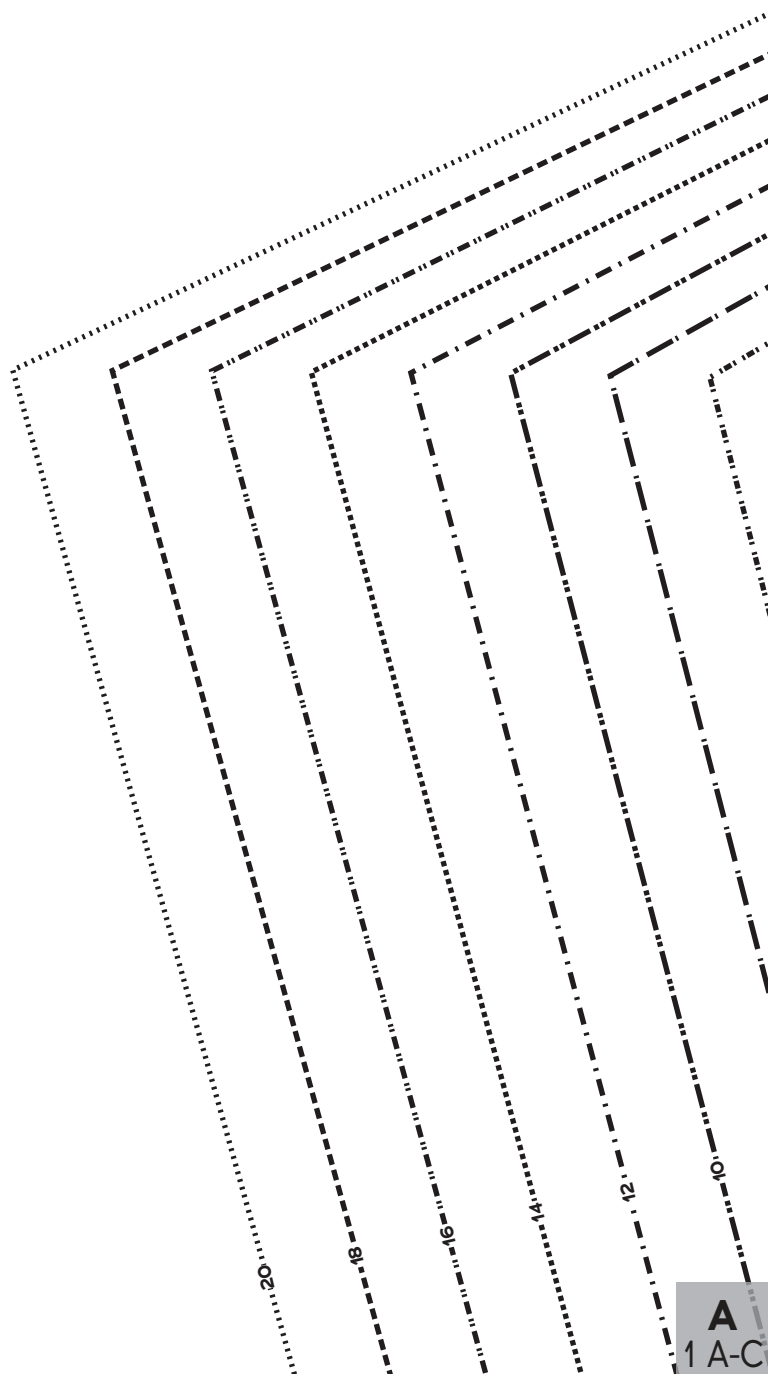
Cut 2 fabric;
2 interfacing



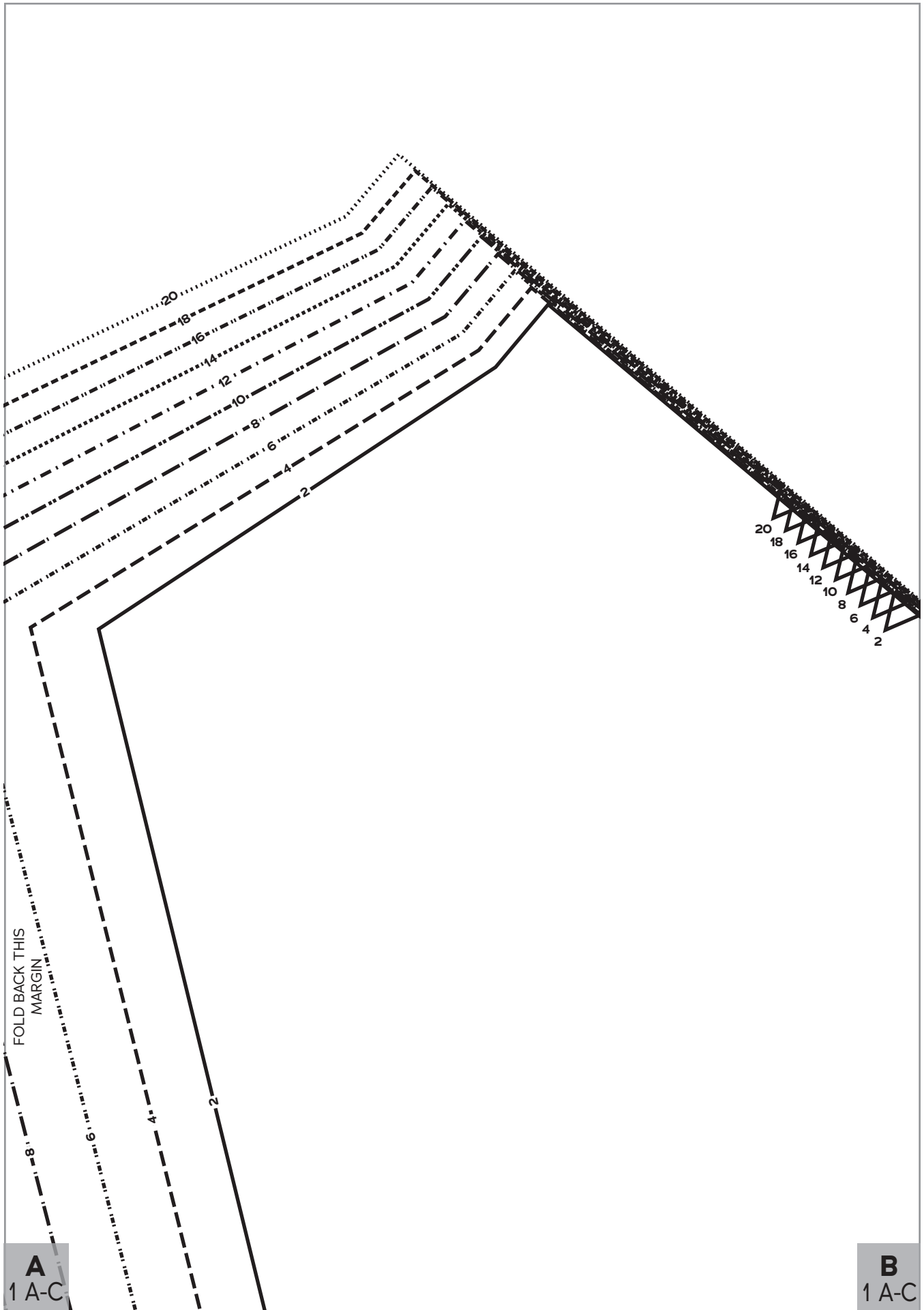
Gardner Top

● COLLAR MATCH POINT

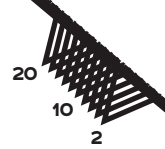
2 20



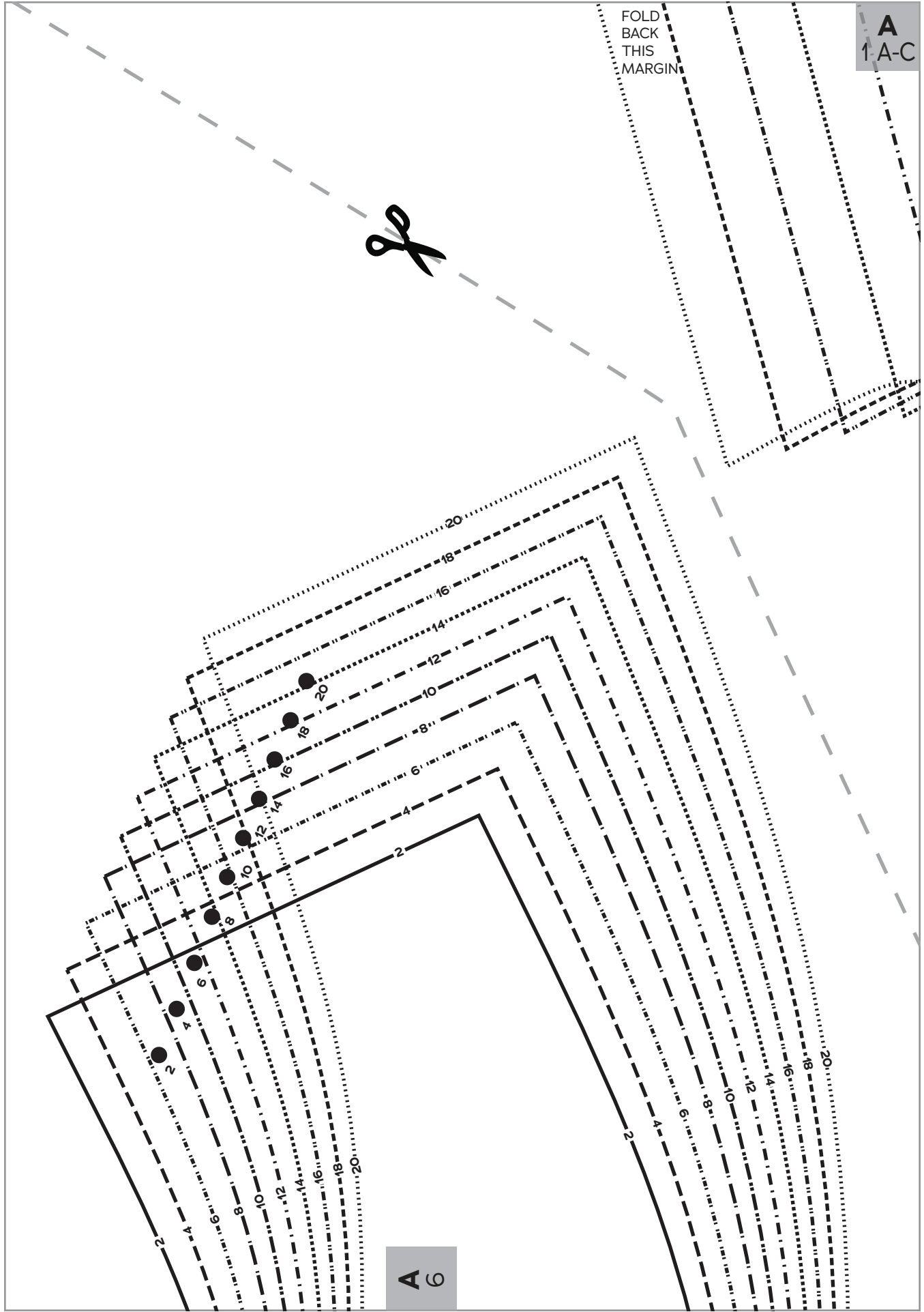
A
1 A-C



FOLD BACK THIS MARGIN



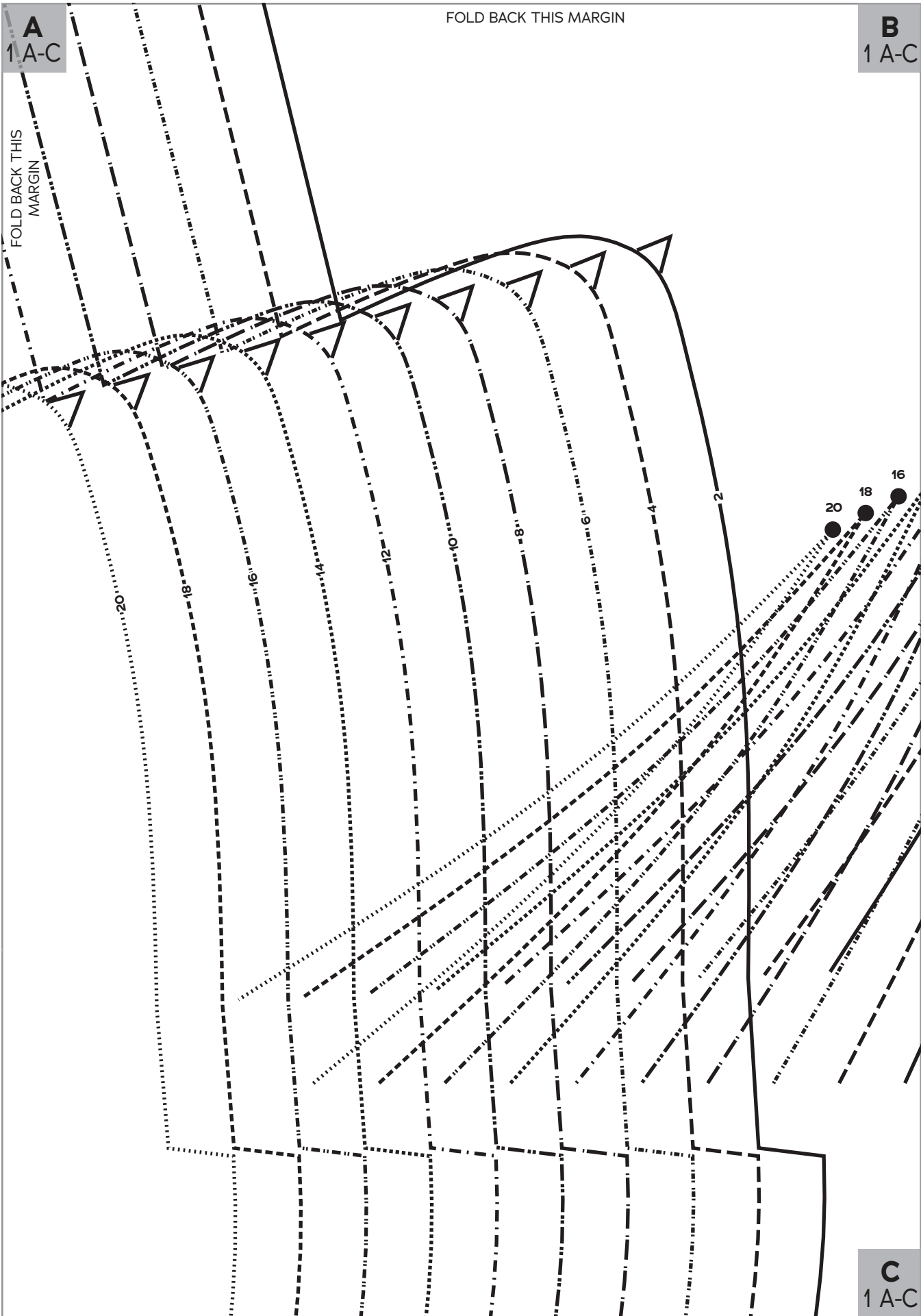
B
1 A-C



FOLD
BACK
THIS
MARGIN

A
1-A-C

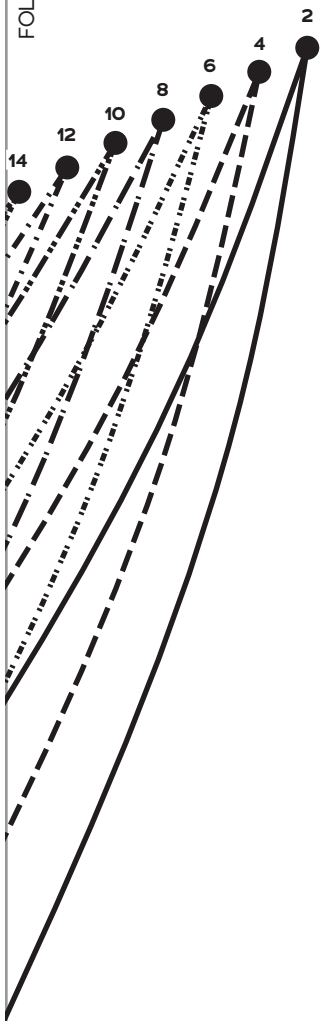
A
6



FOLD BACK THIS MARGIN

B
1 A-C

FOLD BACK THIS MARGIN



Gardner
Top

1

Top Front,
A-C Cup

Cut 1 fabric on fold



FOLD

C
1 A-C

FOLD BACK THIS MARGIN

A 6

GRAINLINE

6
Under
Collar
cut 2 fabric



Gardner
Top

● COLLAR
MATCH
POINT

2 20

C
1 A-C

FOLD
BACK
THIS
MARGIN

20

18

16

14

12

10

8

6

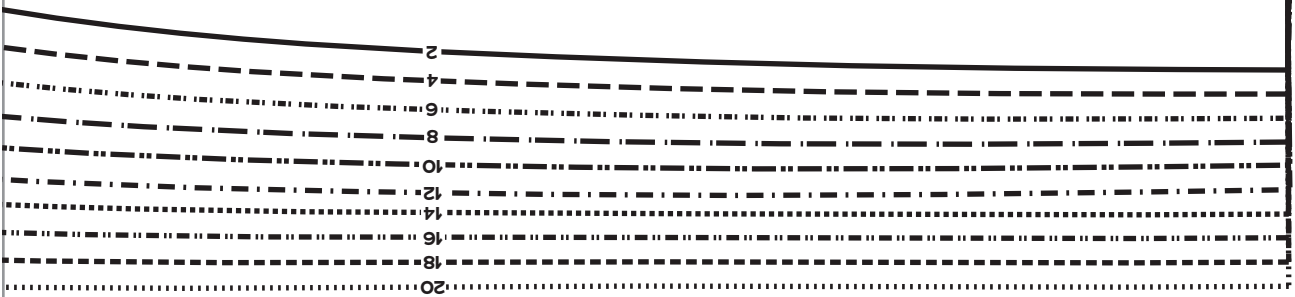
4

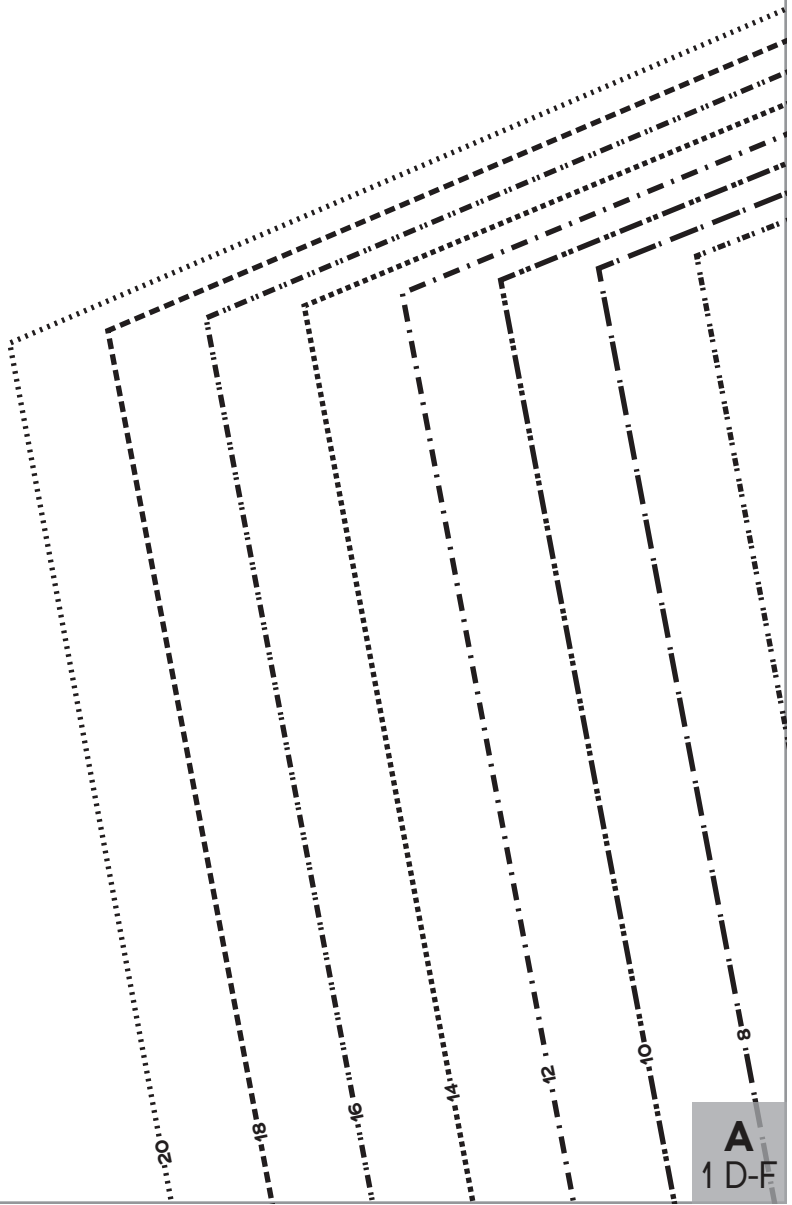
2

C
1 A-C

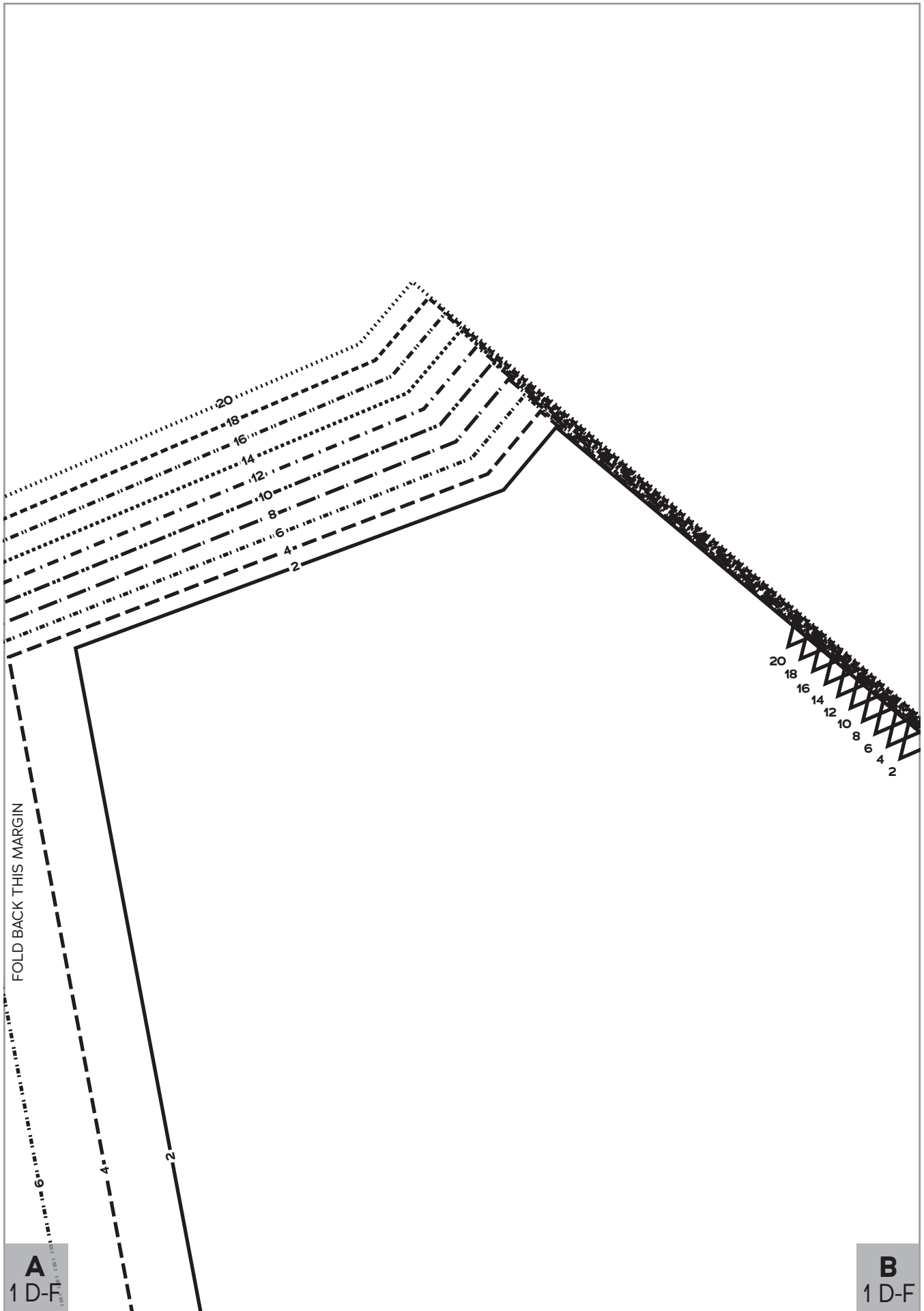
FOLD BACK THIS MARGIN

FOLD BACK THIS MARGIN



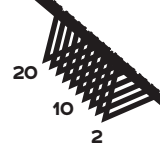


A
1 D-F



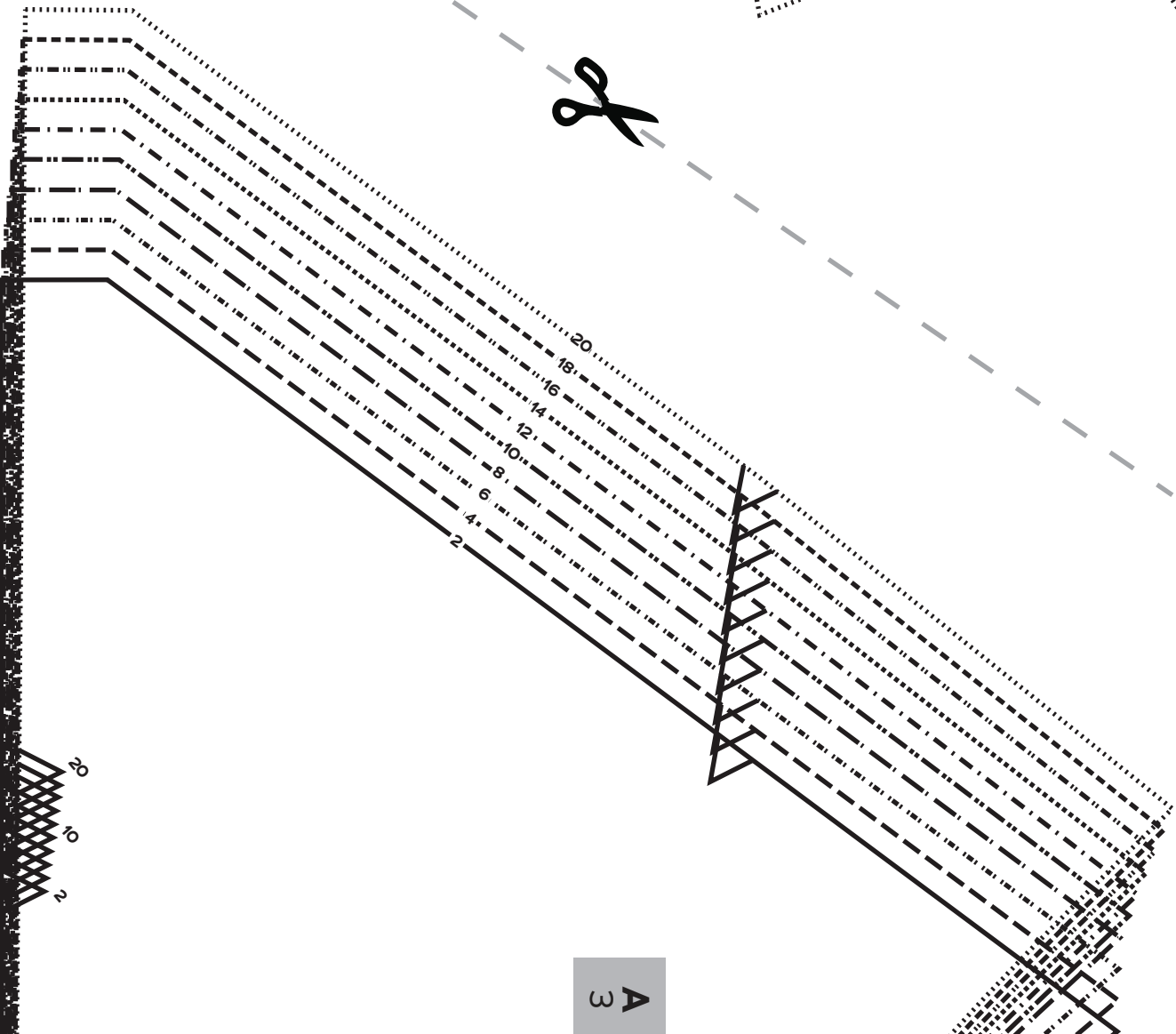
FOLD BACK THIS MARGIN

B
1 D-F

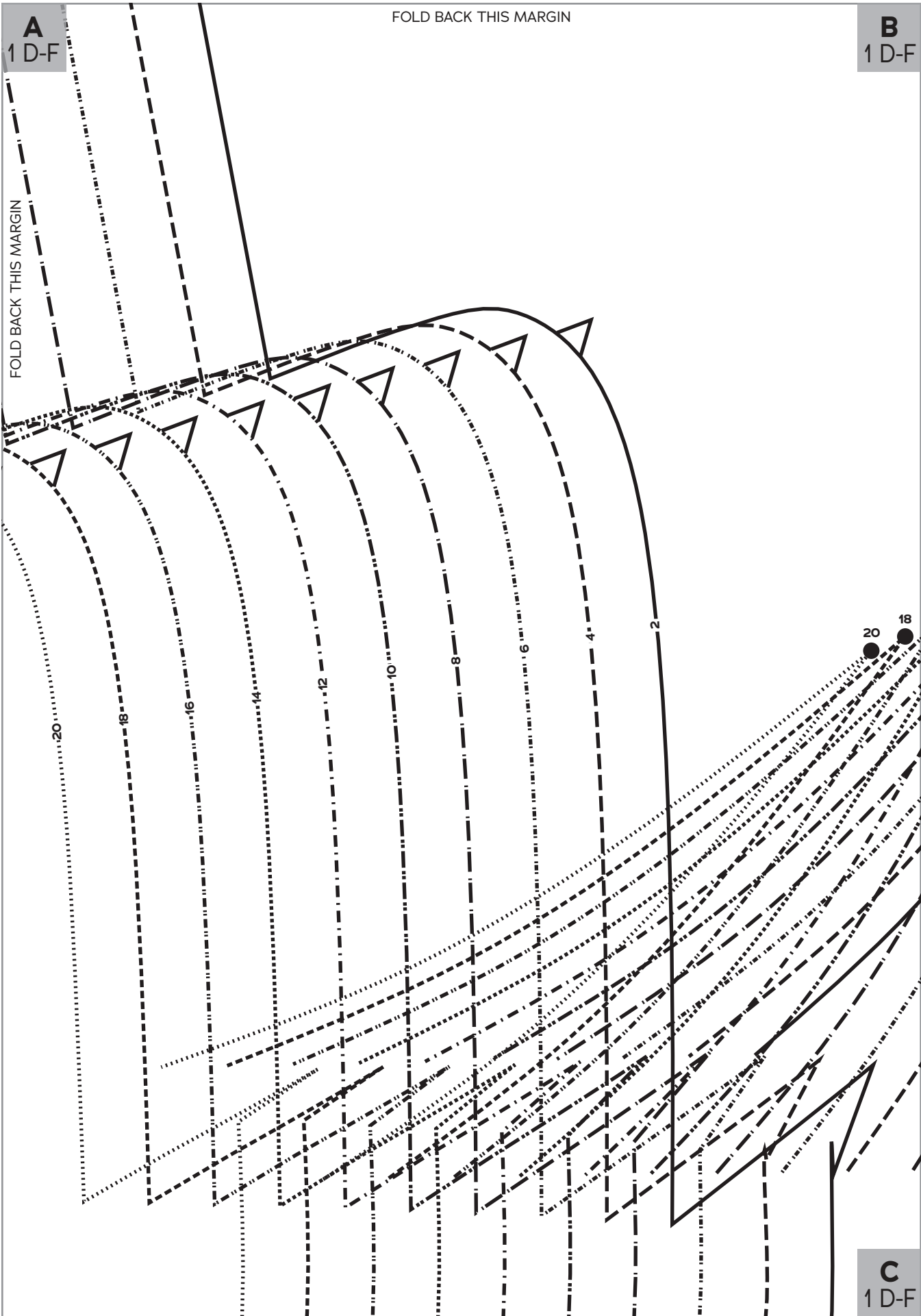


FOLD
BACK
THIS
MARGIN

A
1 D-F



A
3



FOLD BACK THIS MARGIN

A
1 D-F

B
1 D-F

FOLD BACK THIS MARGIN

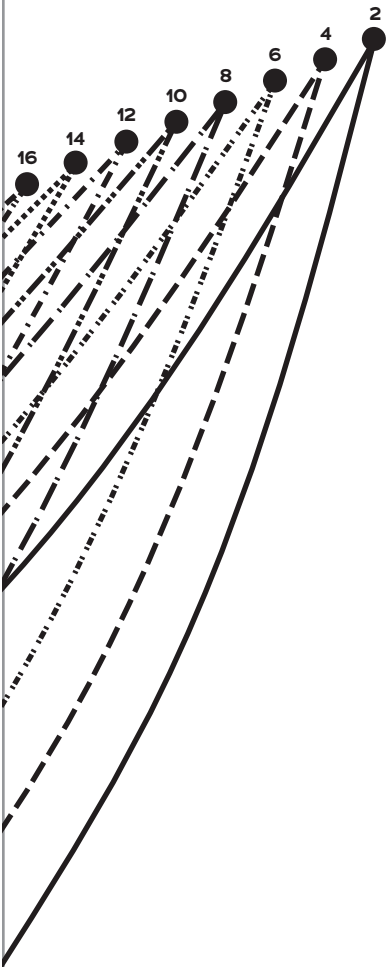
20 18

C
1 D-F

B
1 D-F

FOLD BACK THIS MARGIN

FOLD BACK THIS MARGIN



Gardner
Top

1

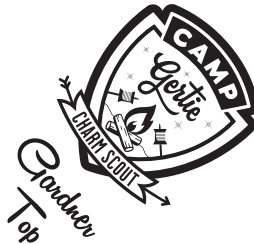
Top Front,
D-F Cup

Cut 1 fabric on fold

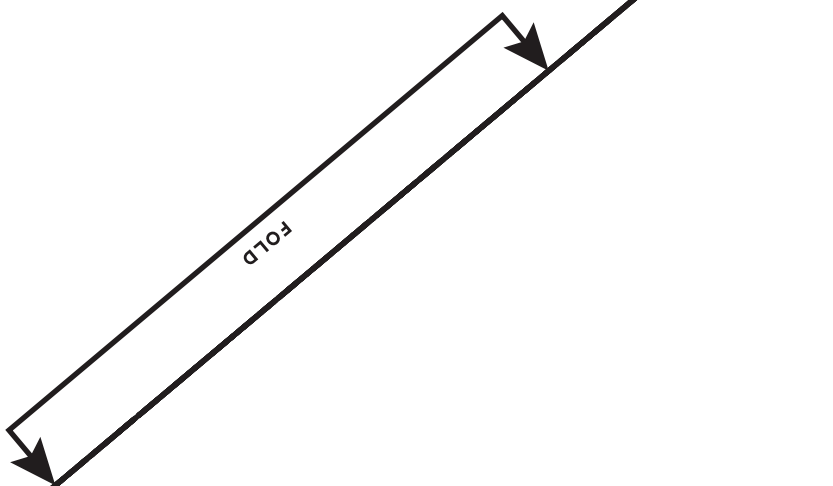
C
1 D-F

FOLD BACK THIS MARGIN

3 A

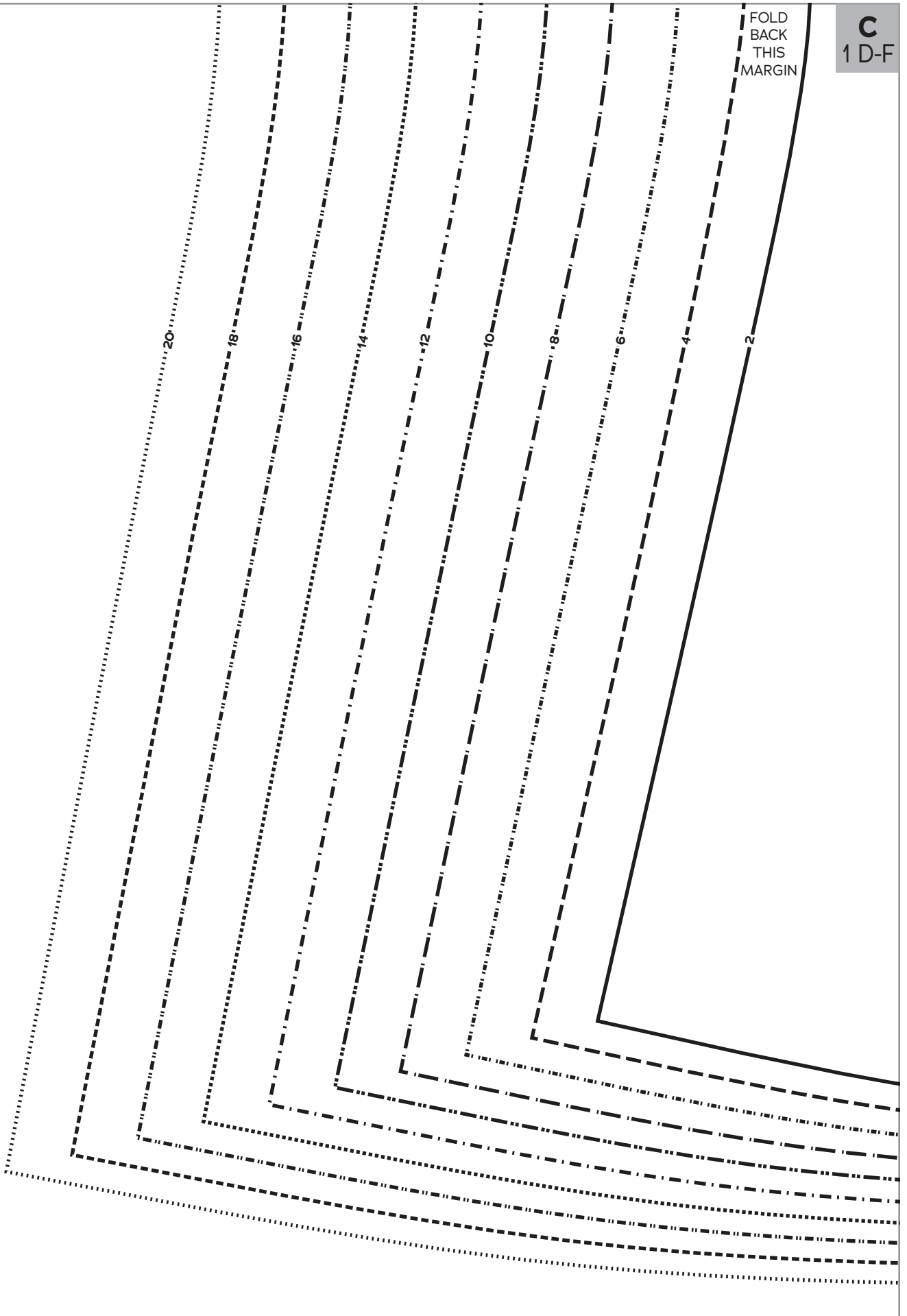


3
Front
Yoke
cut 1 fabric on fold



C
1 D-F

FOLD
BACK
THIS
MARGIN

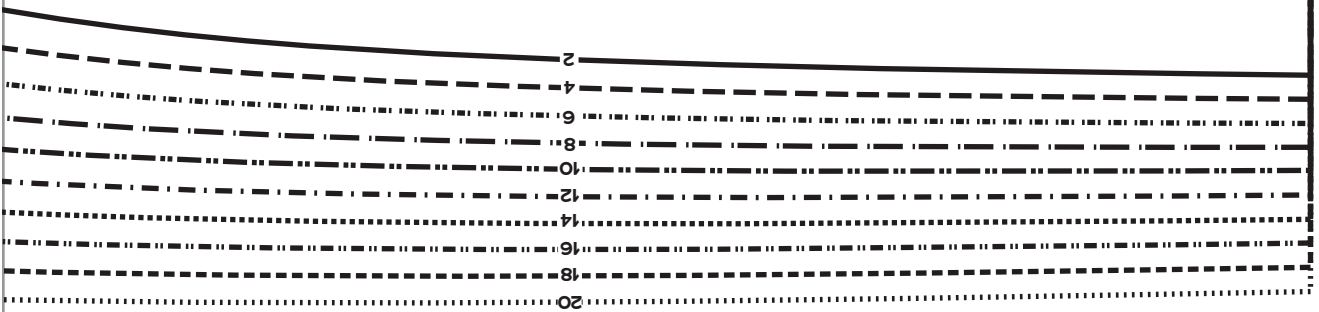


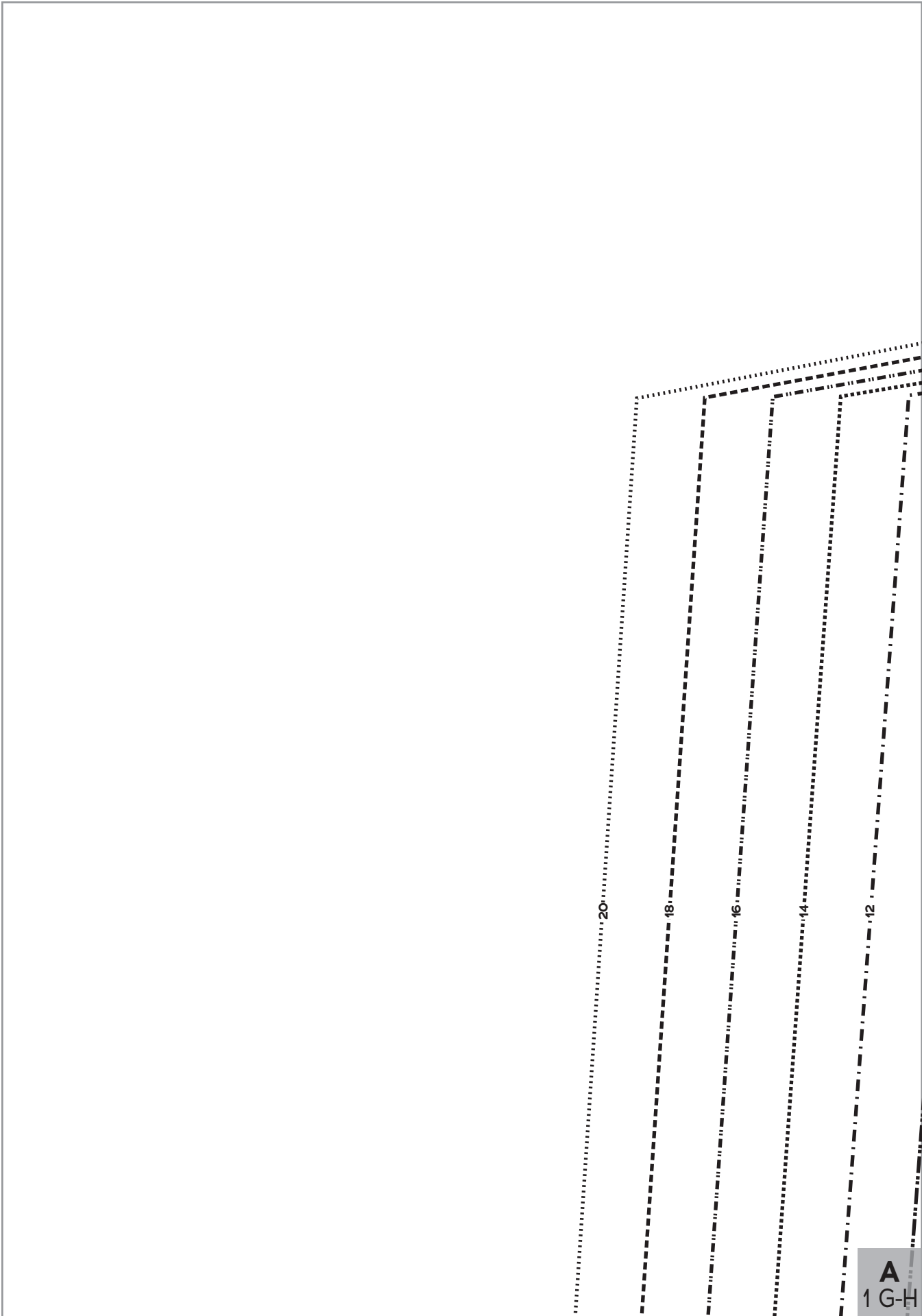
C
1 D-F

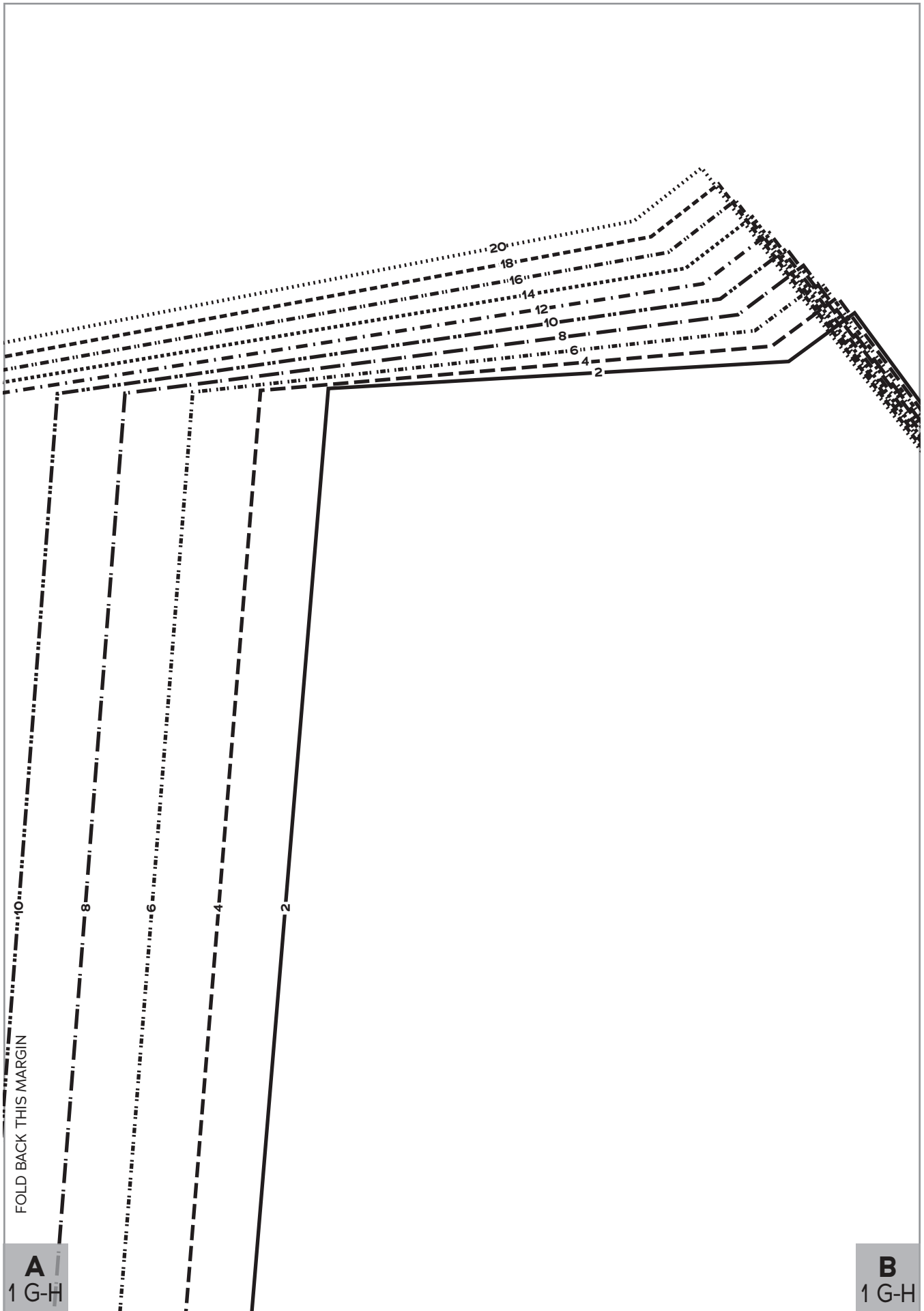
FOLD BACK THIS MARGIN

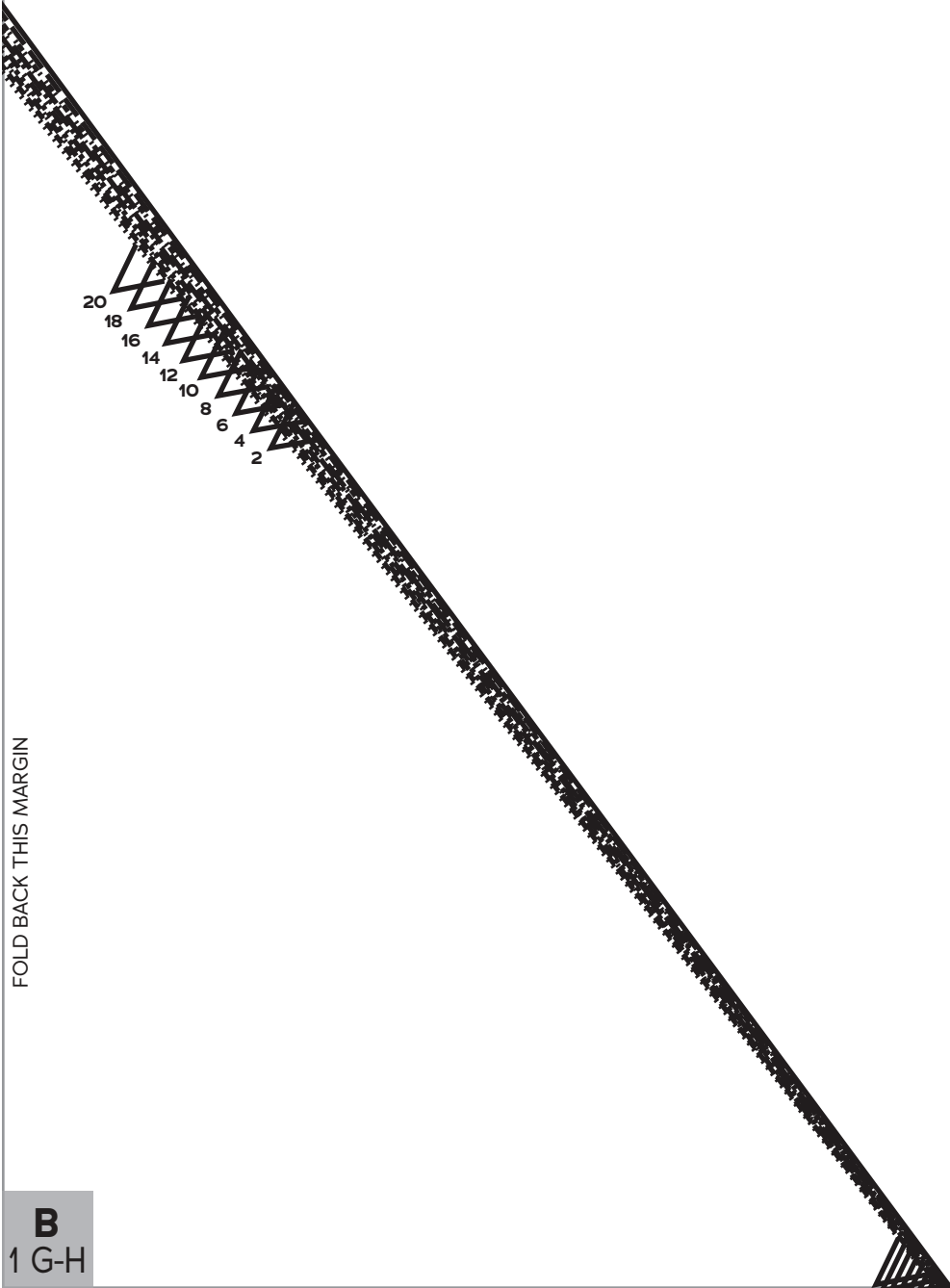
FOLD

FOLD BACK THIS MARGIN



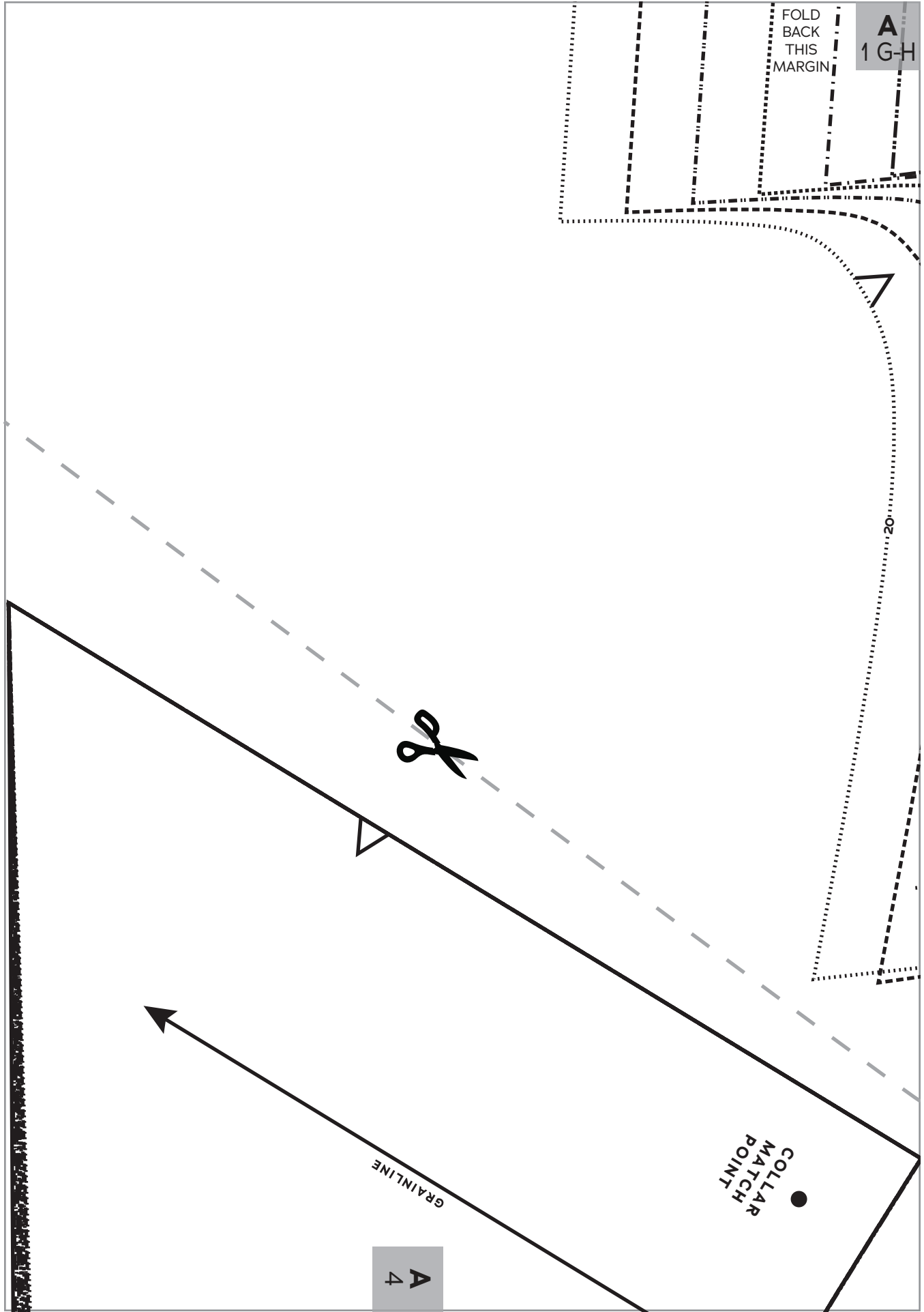






FOLD BACK THIS MARGIN

B
1 G-H



FOLD
BACK
THIS
MARGIN

A
1 G-H

20



●
COLLAR
MATCH
POINT

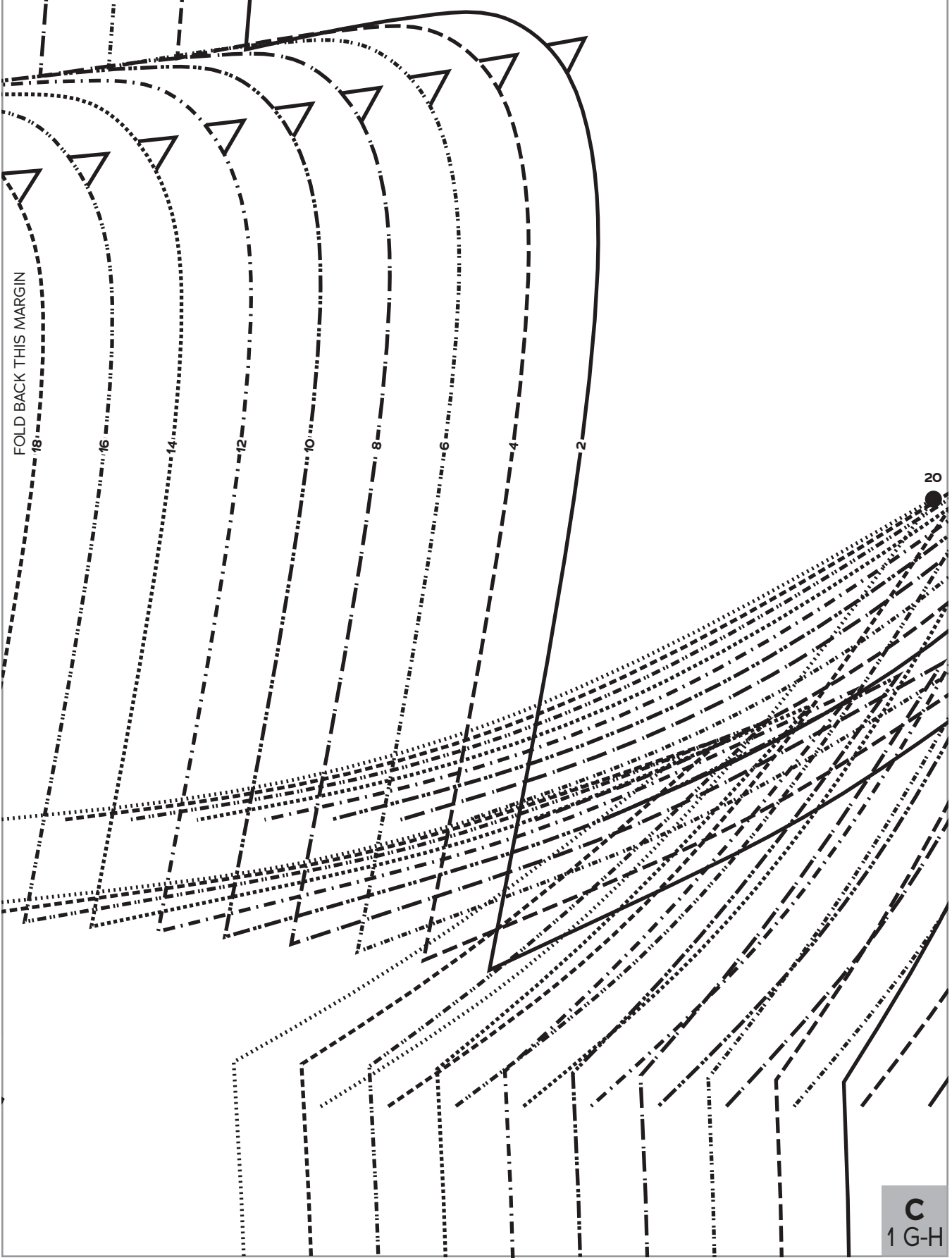
GRAINLINE

A
4

A
1 G-H

FOLD BACK THIS MARGIN

B
1 G-H



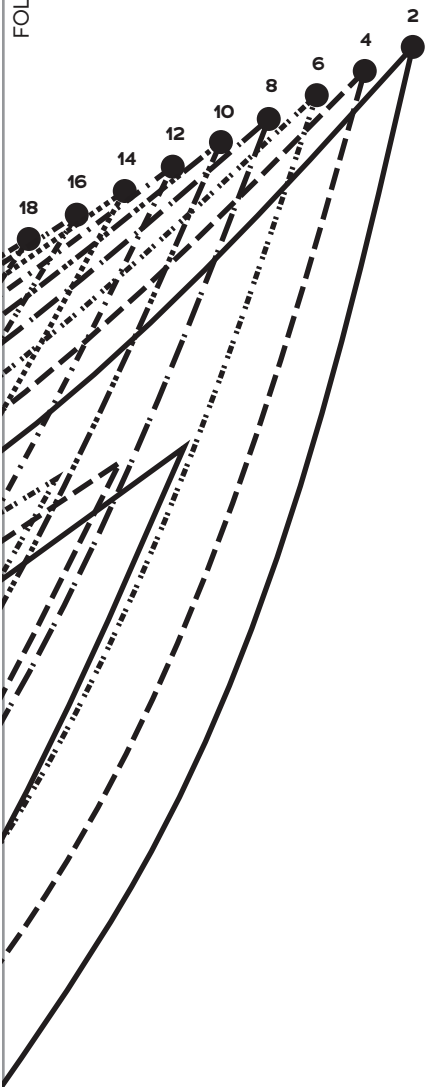
C
1 G-H

B
1 G-H

FOLD BACK THIS MARGIN

20
10
2

FOLD BACK THIS MARGIN



Gardner
Top

1

Top Front,
G-H Cup

Cut 1 fabric on fold

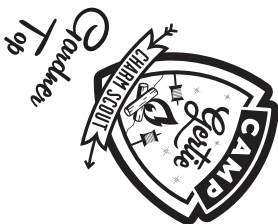
FOLD

C
1 G-H

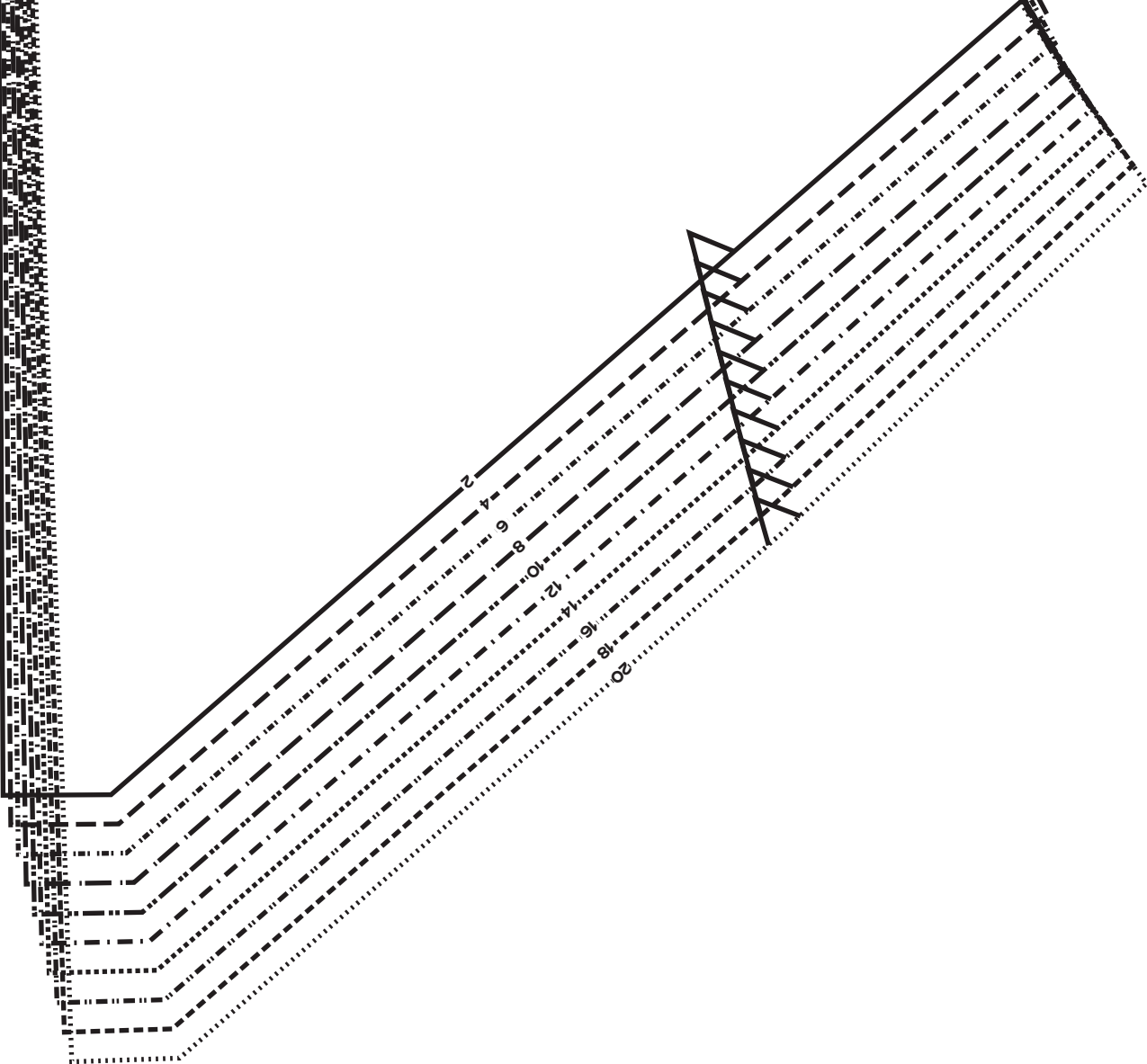
FOLD BACK THIS MARGIN

A
4

4
Back
Yoke
cut 2 fabric

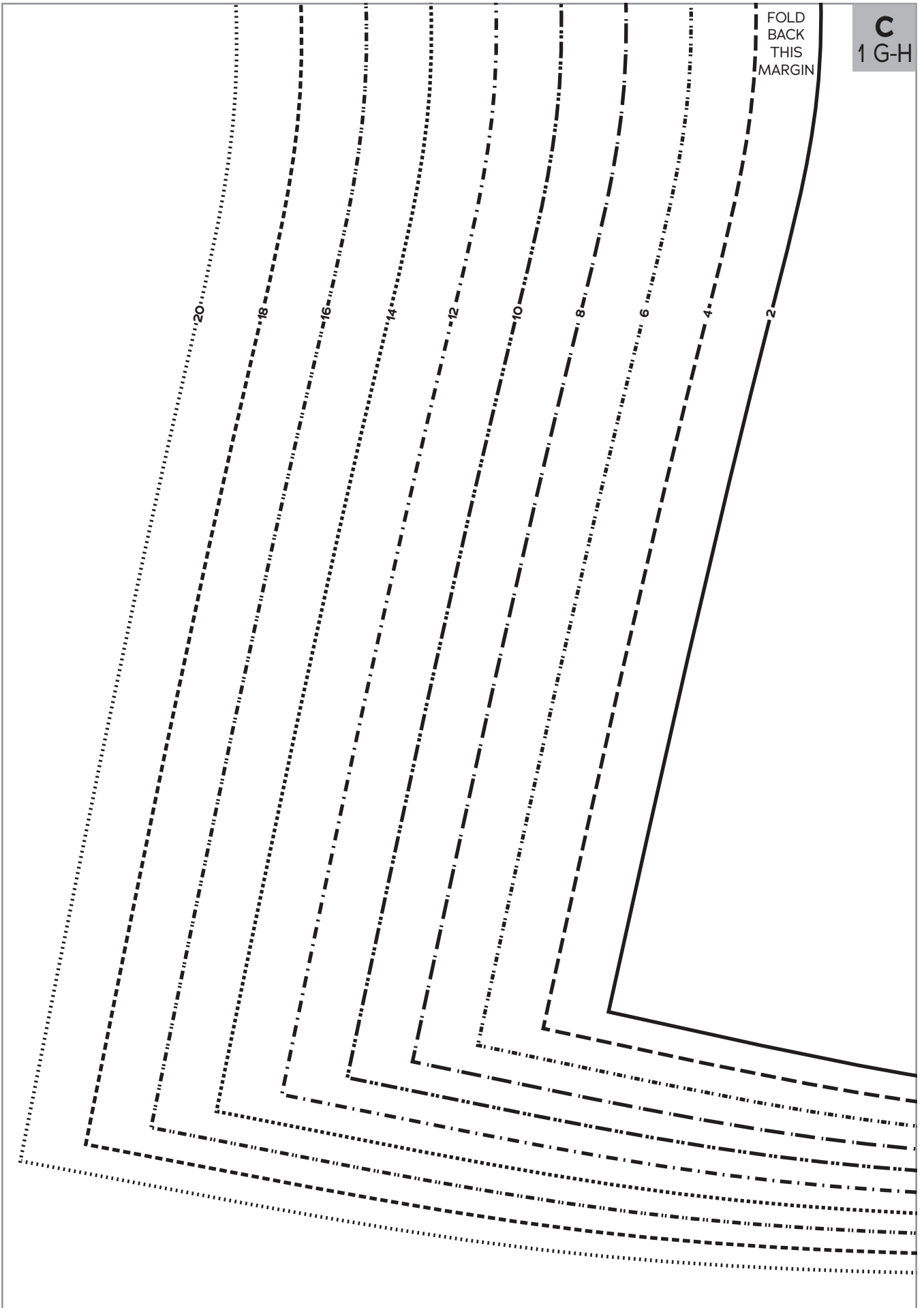


Garden
Scout
Top



C
1 G-H

FOLD
BACK
THIS
MARGIN



C
1 G-H

FOLD BACK THIS MARGIN

FOLD BACK THIS MARGIN

