

UNLESS OTHERWISE SPECIFIED:
DIMENSIONS ARE IN INCHES

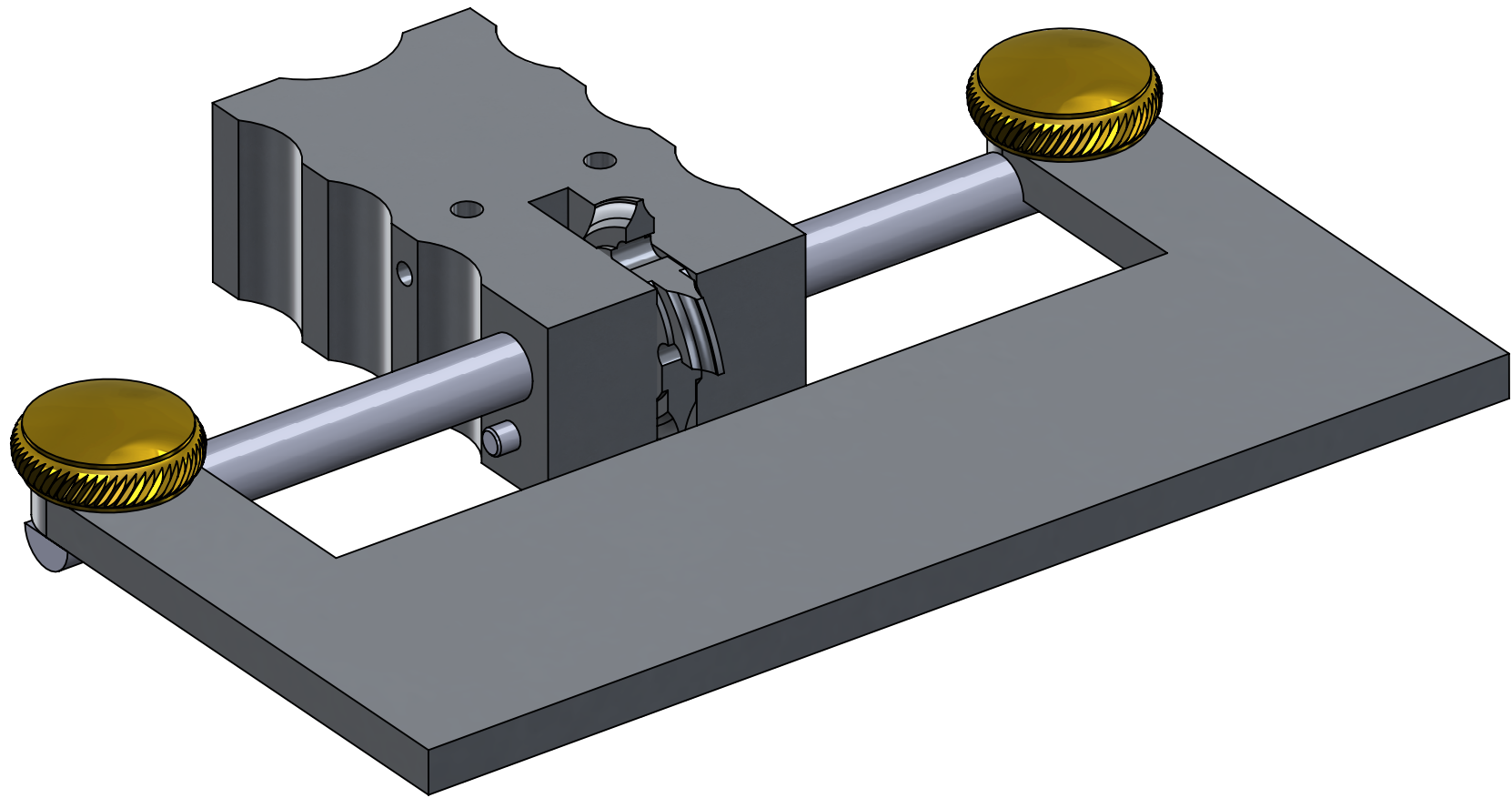
UNLESS OTHERWISE SPECIFIED, TOLERANCES:
LINEAR: DIMENSIONS UNDER 5/8 INCH ± 0.012
DIMENSIONS 5/8 INCH AND OVER ± 0.04
ANGULAR: $\pm 0.5^\circ$

REMOVE ALL BURRS AND SHARP EDGES
0.02 RADIUS OR CHAMFER MAX

MATERIAL: BRASS, ALUMINUM, STEEL

TITLE:
CUTTER SHARPENER

 CLICKSPRINGPROJECTS.COM A4



UNLESS OTHERWISE SPECIFIED:
DIMENSIONS ARE IN MILLIMETERS

UNLESS OTHERWISE SPECIFIED, TOLERANCES:
LINEAR: DIMENSIONS UNDER 15 MM ± 0.3
DIMENSIONS 15 MM AND OVER ± 1
ANGULAR: $\pm 0.5^\circ$

REMOVE ALL BURRS AND SHARP EDGES
0.50 RADIUS OR CHAMFER MAX

MATERIAL: BRASS, ALUMINUM, STEEL

COPYRIGHT © CLICKSPRING 2020

TITLE:

CUTTER SHARPENER (CUTTER CONFIG.)

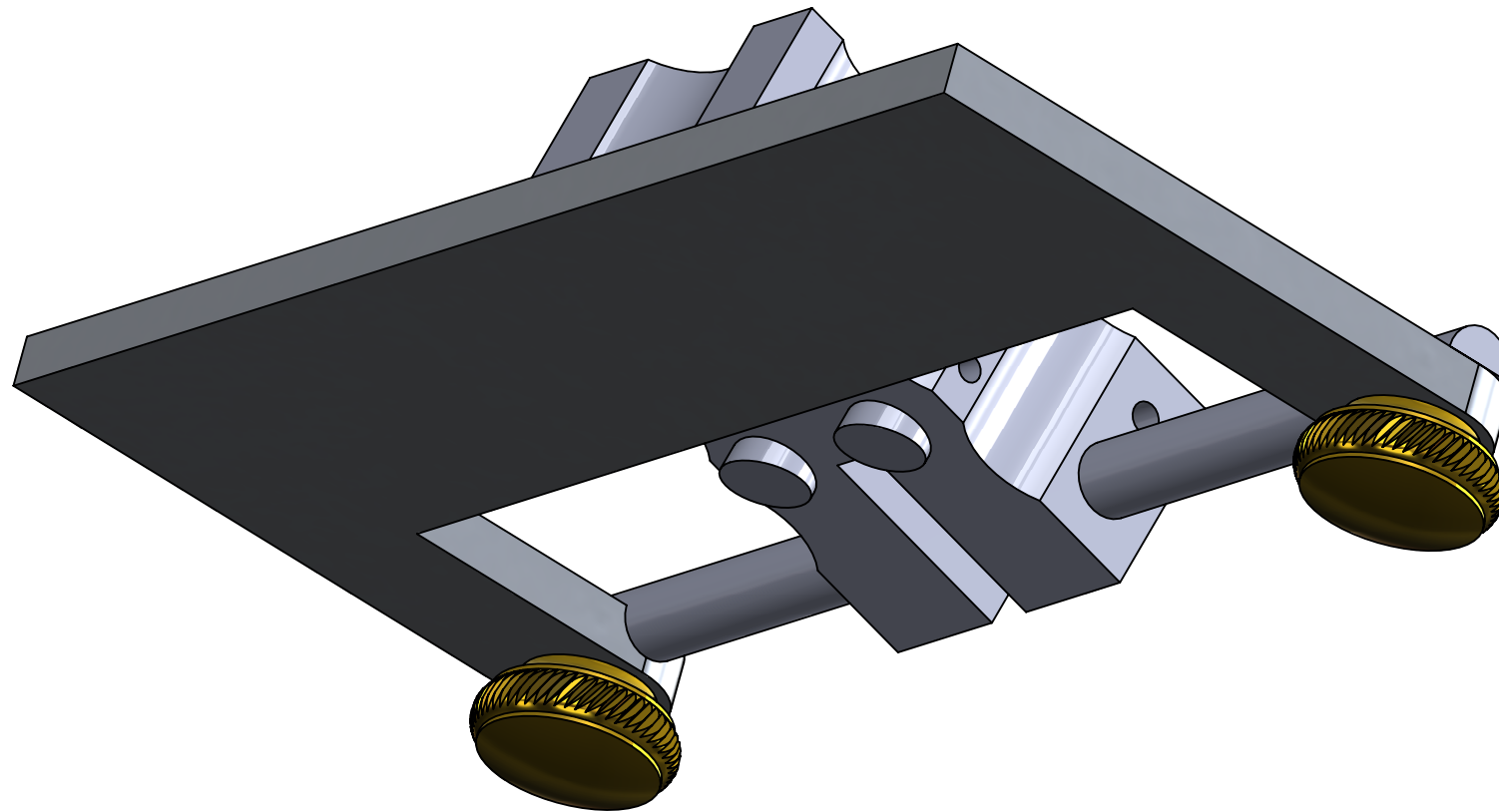


CLICKSPRINGPROJECTS.COM

A4

SCALE: 1.5:1

SHEET 2 OF 10



UNLESS OTHERWISE SPECIFIED:
DIMENSIONS ARE IN INCHES

UNLESS OTHERWISE SPECIFIED, TOLERANCES:
LINEAR: DIMENSIONS UNDER 5/8 INCH ± 0.012
DIMENSIONS 5/8 INCH AND OVER ± 0.04
ANGULAR: $\pm 0.5^\circ$

REMOVE ALL BURRS AND SHARP EDGES
0.02 RADIUS OR CHAMFER MAX

MATERIAL: BRASS, ALUMINUM, STEEL

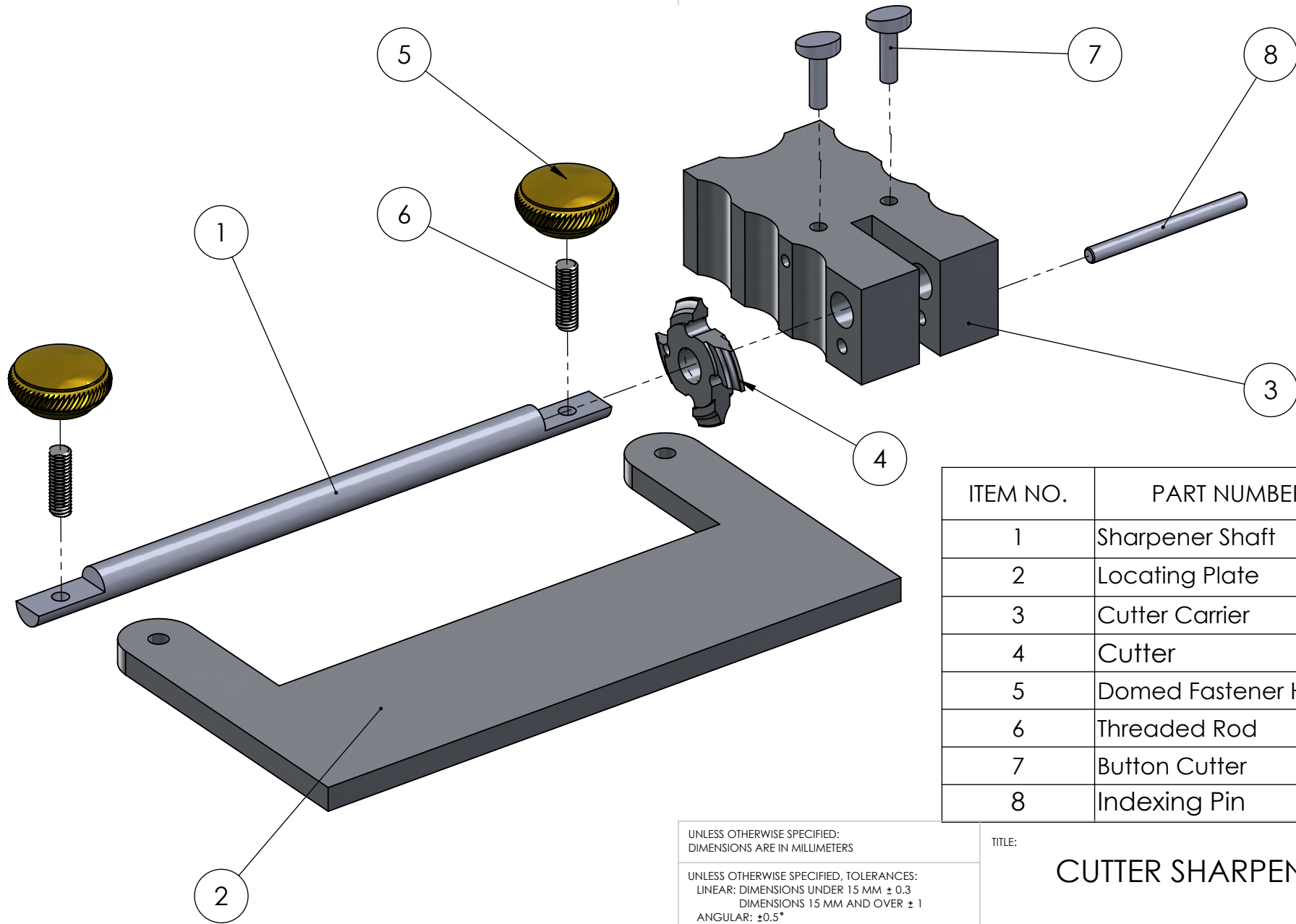
TITLE:

CUTTER SHARPENER
(BUTTON CONFIG.)



CLICKSPRINGPROJECTS.COM

A4



ITEM NO.	PART NUMBER	QTY.
1	Sharpener Shaft	1
2	Locating Plate	1
3	Cutter Carrier	1
4	Cutter	1
5	Domed Fastener Head	2
6	Threaded Rod	2
7	Button Cutter	2
8	Indexing Pin	1

UNLESS OTHERWISE SPECIFIED:
DIMENSIONS ARE IN MILLIMETERS

UNLESS OTHERWISE SPECIFIED, TOLERANCES:
LINEAR: DIMENSIONS UNDER 15 MM ± 0.3
DIMENSIONS 15 MM AND OVER ± 1
ANGULAR: $\pm 0.5^\circ$

REMOVE ALL BURRS AND SHARP EDGES
0.50 RADIUS OR CHAMFER MAX

MATERIAL: BRASS, ALUMINUM, STEEL

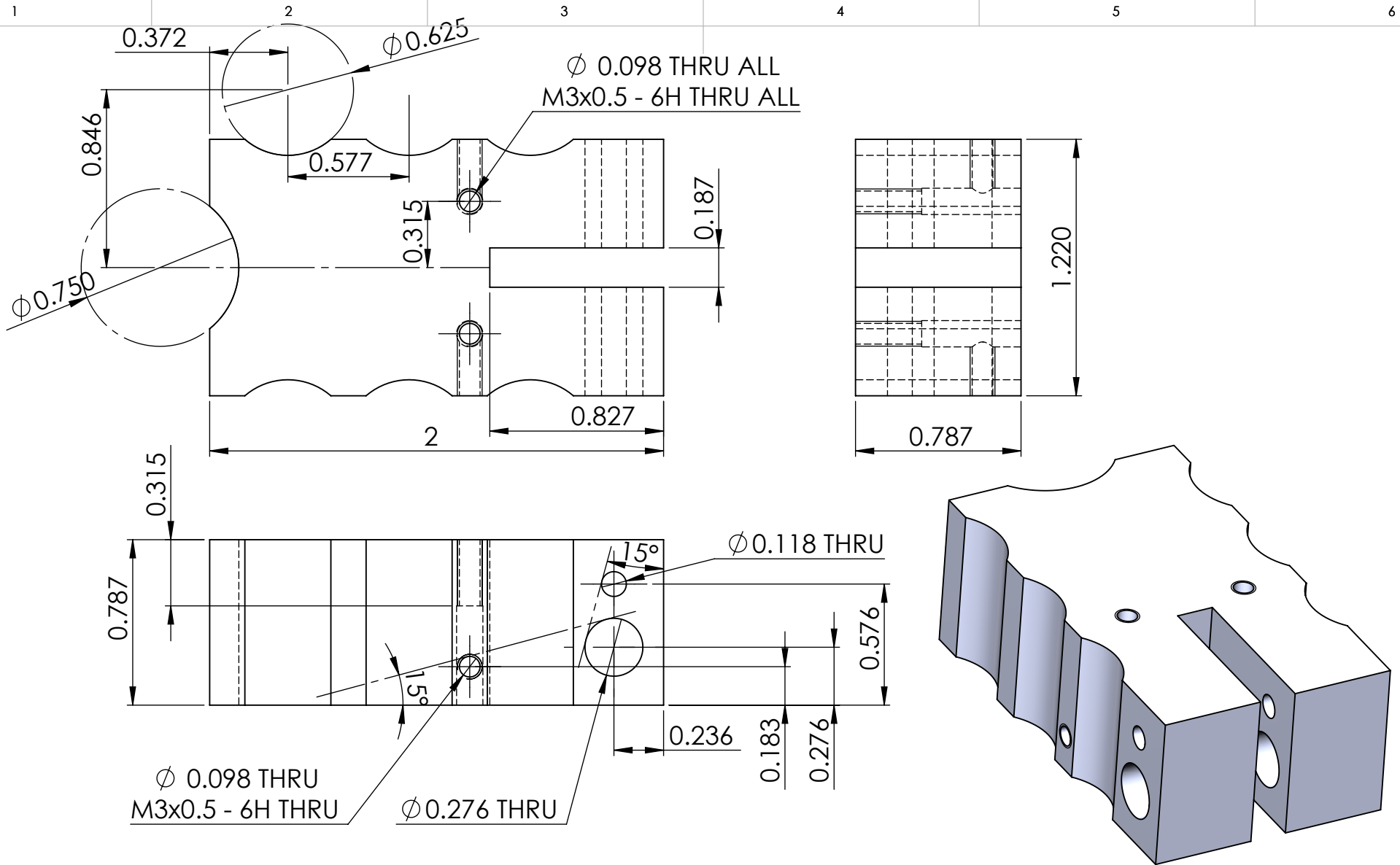
TITLE:

CUTTER SHARPENER



CLICKSPRINGPROJECTS.COM

A4



- NOTES, UNLESS OTHERWISE SPECIFIED
- SLOT FOR CUTTER NOMINALLY 3/16" CUT TO SUIT CUTTER BLANK STOCK
 - ANGLES ARE FOR EASY MILL LOCATION, REFER VIDEO PART 2

UNLESS OTHERWISE SPECIFIED:
DIMENSIONS ARE IN INCHES

UNLESS OTHERWISE SPECIFIED, TOLERANCES:
LINEAR: DIMENSIONS UNDER 5/8 INCH ± 0.012
DIMENSIONS 5/8 INCH AND OVER ± 0.04
ANGULAR: $\pm 0.5^\circ$

REMOVE ALL BURRS AND SHARP EDGES
0.02 RADIUS OR CHAMFER MAX

MATERIAL: ALUMINUM

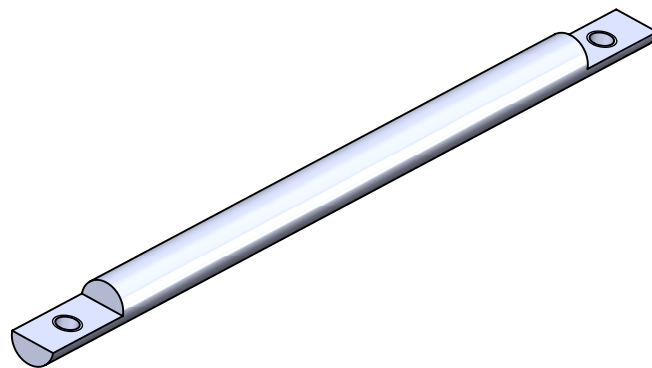
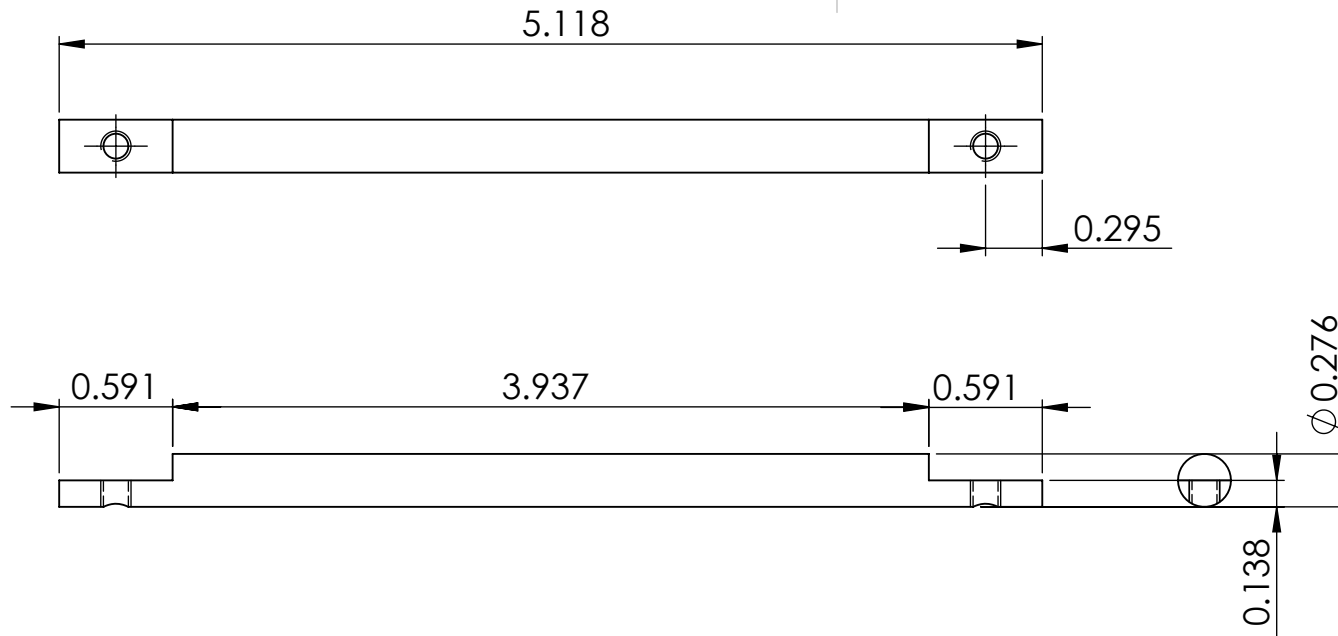
TITLE:

CUTTER CARRIER



CLICKSPRINGPROJECTS.COM

A4



- NOTES, UNLESS OTHERWISE SPECIFIED
- SHAFT OD NOMINALLY 7MM
 - REDUCE TO A CLOSE SLIDING FIT WITH INTENDED CUTTER BORE AS APPROPRIATE
 - 1/2 WAY MILL DIMENSION TO BE REDUCED ACCORDINGLY

UNLESS OTHERWISE SPECIFIED:
DIMENSIONS ARE IN INCHES

UNLESS OTHERWISE SPECIFIED, TOLERANCES:
LINEAR: DIMENSIONS UNDER 5/8 INCH ± 0.012
DIMENSIONS 5/8 INCH AND OVER ± 0.04
ANGULAR: $\pm 0.5^\circ$

REMOVE ALL BURRS AND SHARP EDGES
0.02 RADIUS OR CHAMFER MAX

MATERIAL: PLAIN CARBON STEEL

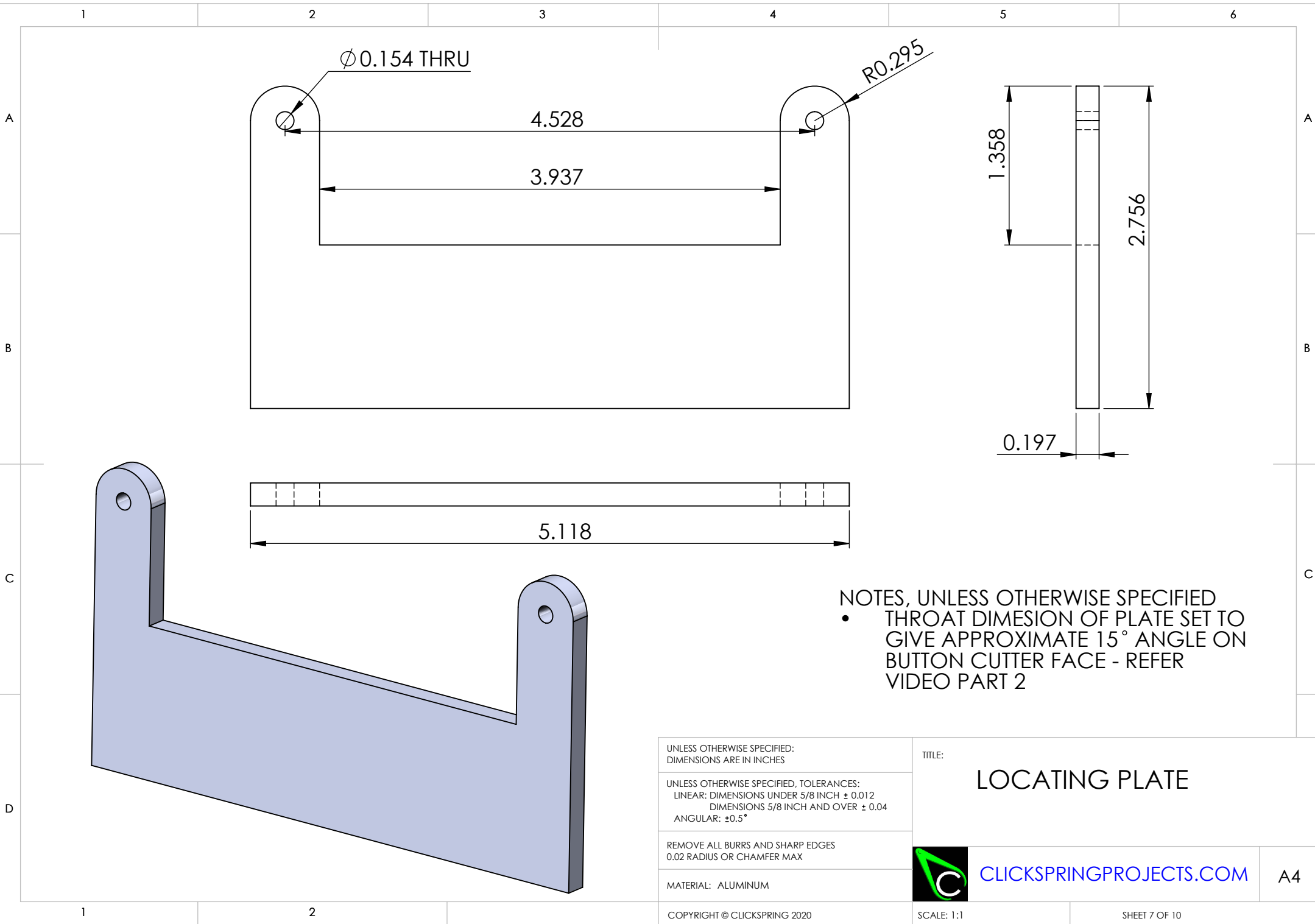
TITLE:

SHARPENER SHAFT



CLICKSPRINGPROJECTS.COM

A4



NOTES, UNLESS OTHERWISE SPECIFIED

- THROAT DIMENSION OF PLATE SET TO GIVE APPROXIMATE 15° ANGLE ON BUTTON CUTTER FACE - REFER VIDEO PART 2

UNLESS OTHERWISE SPECIFIED:
DIMENSIONS ARE IN INCHES

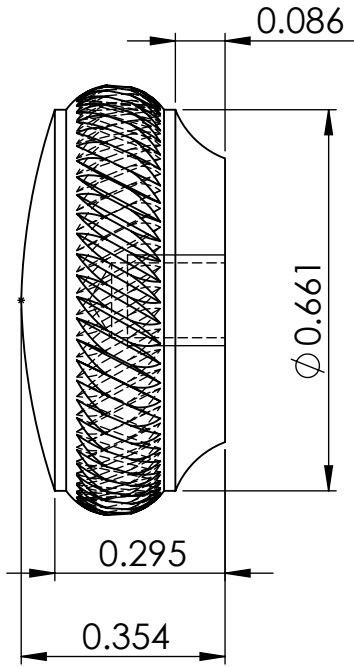
UNLESS OTHERWISE SPECIFIED, TOLERANCES:
LINEAR: DIMENSIONS UNDER 5/8 INCH ± 0.012
DIMENSIONS 5/8 INCH AND OVER ± 0.04
ANGULAR: $\pm 0.5^\circ$

REMOVE ALL BURRS AND SHARP EDGES
0.02 RADIUS OR CHAMFER MAX

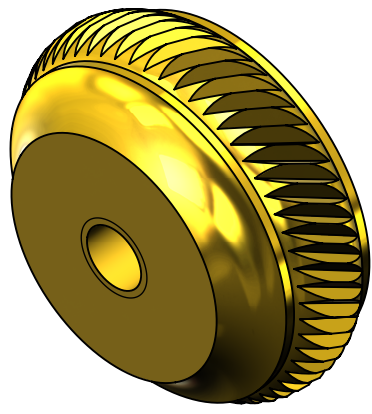
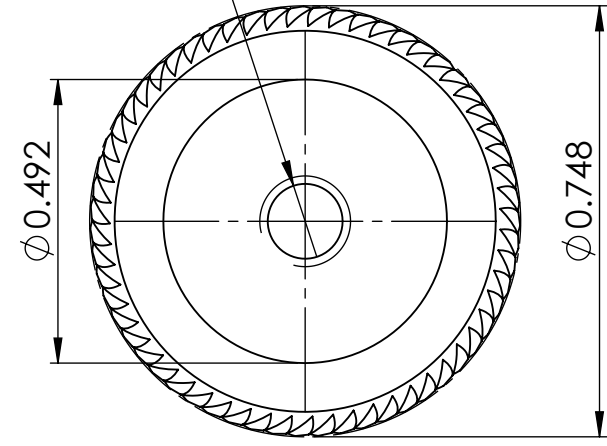
MATERIAL: ALUMINUM

TITLE:
LOCATING PLATE

 CLICKSPRINGPROJECTS.COM A4



ϕ 0.130 ∇ 0.197
 M4x0.7 - 6H ∇ 0.169



- NOTES, UNLESS OTHERWISE SPECIFIED
- PERIMETER ROPE KNURL TO TASTE, REFER VIDEO PART 1
 - THREAD NOMINALLY M4X0.7, SUBSTITUTE IMPERIAL EQUIVALENT AS APPROPRIATE


UNLESS OTHERWISE SPECIFIED:
 DIMENSIONS ARE IN INCHES

UNLESS OTHERWISE SPECIFIED, TOLERANCES:
 LINEAR: DIMENSIONS UNDER 5/8 INCH \pm 0.012
 DIMENSIONS 5/8 INCH AND OVER \pm 0.04
 ANGULAR: \pm 0.5°

REMOVE ALL BURRS AND SHARP EDGES
 0.02 RADIUS OR CHAMFER MAX

MATERIAL: BRASS

TITLE:
FASTENER HEAD

 CLICKSPRINGPROJECTS.COM

A4

1 2 3 4 5 6

A

A

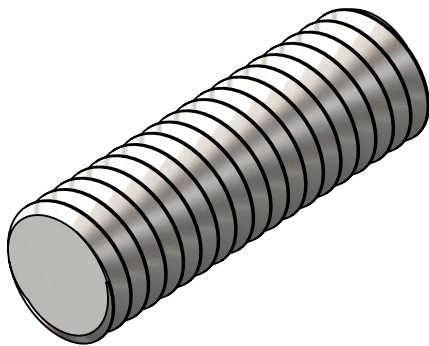
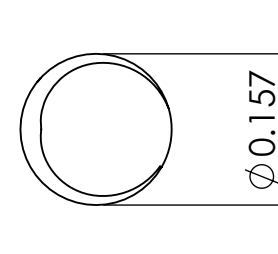
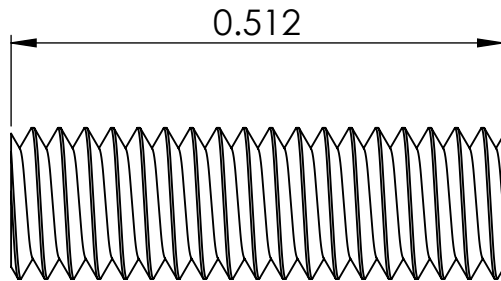
B

B

C


C

D



NOTES, UNLESS OTHERWISE SPECIFIED

- THREAD NOMINALLY M4X0.7, SUBSTITUTE IMPERIAL EQUIVALENT AS APPROPRIATE

UNLESS OTHERWISE SPECIFIED: DIMENSIONS ARE IN INCHES	TITLE: THREADED ROD	
UNLESS OTHERWISE SPECIFIED, TOLERANCES: LINEAR: DIMENSIONS UNDER 5/8 INCH ± 0.012 DIMENSIONS 5/8 INCH AND OVER ± 0.04 ANGULAR: $\pm 0.5^\circ$		
REMOVE ALL BURRS AND SHARP EDGES 0.02 RADIUS OR CHAMFER MAX		
MATERIAL: PLAIN CARBON STEEL		CLICKSPRINGPROJECTS.COM
COPYRIGHT © CLICKSPRING 2020		SCALE: 5:1

A4

1 2 3 4 5 6

1

2

3

4

5

6

A

A

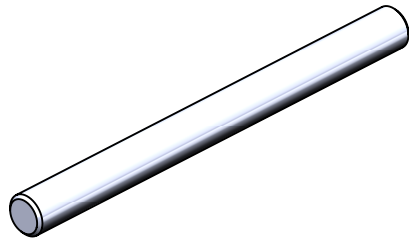
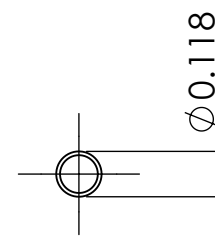
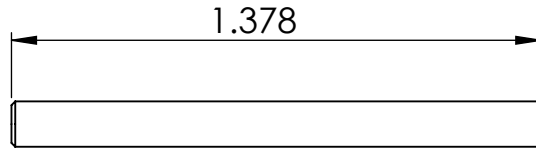
B

B

C

C

D



- NOTES, UNLESS OTHERWISE SPECIFIED
- GENEROUS CHAMFER ON ENDS
 - HSS DRILL ROD BLANK SUITABLE ALTERNATIVE TO O1 DRILL ROD

UNLESS OTHERWISE SPECIFIED:
DIMENSIONS ARE IN INCHES

UNLESS OTHERWISE SPECIFIED, TOLERANCES:
LINEAR: DIMENSIONS UNDER 5/8 INCH ± 0.012
DIMENSIONS 5/8 INCH AND OVER ± 0.04
ANGULAR: $\pm 0.5^\circ$

REMOVE ALL BURRS AND SHARP EDGES
0.02 RADIUS OR CHAMFER MAX

MATERIAL: PLAIN CARBON STEEL

TITLE:

INDEXING PIN



CLICKSPRINGPROJECTS.COM

A4

1

2