



# Mariner Top

Sizes 18-34  
with cup sizes A-H

5/8 inch (1.5 cm) seam allowances  
are included on all pattern pieces.

Page 1 of 6

### PAGE 1 PATTERN PIECES

- 1 Top Center Front, A-C Cup
- 1 Top Center Front, D/DD Cup
- 1 Top Center Front, F/G Cup
- 1 Top Center Front, H Cup
- 2 Top Side Front, A Cup

### SIZE 18-34

### PATTERN

### SIZE KEY

18 - - - - -

20 - - - - -

22 - - - - -

24 - - - - -

26 - - - - -

28 - - - - -

30 - - - - -

32 - - - - -

34 - - - - -

### SYMBOL KEY

grainline arrow

match point/  
placement mark

●

1" test  
square

1" test  
square

1" test  
square

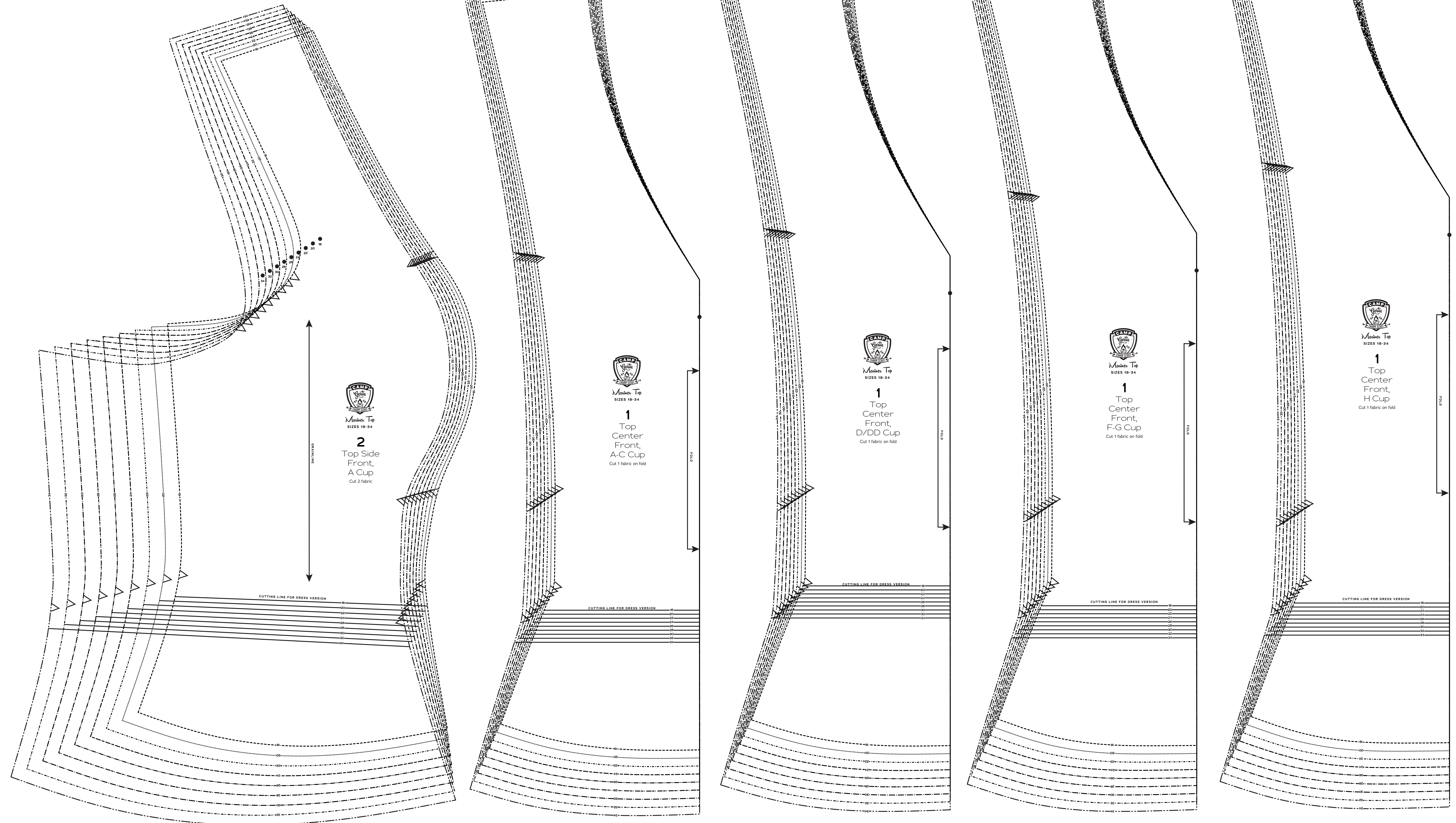
1" test  
square

1" test  
square

1" test  
square

1" test  
square

1" test  
square



Mariner Top  
SIZES 18-34  
**2**  
Top Side  
Front,  
A Cup  
Cut 2 fabric



Mariner Top  
SIZES 18-34  
**1**  
Top  
Center  
Front,  
A-C Cup  
Cut 1 fabric on fold



Mariner Top  
SIZES 18-34  
**1**  
Top  
Center  
Front,  
D/DD Cup  
Cut 1 fabric on fold



Mariner Top  
SIZES 18-34  
**1**  
Top  
Center  
Front,  
F-G Cup  
Cut 1 fabric on fold



Mariner Top  
SIZES 18-34  
**1**  
Top  
Center  
Front,  
H Cup  
Cut 1 fabric on fold



# Mariner Top

Sizes 18-34  
with cup sizes A-H

5/8 inch (1.5 cm) seam allowances  
are included on all pattern pieces.

Page 2 of 6

### PAGE 2 PATTERN PIECES

- 2 Top Side Front, B/C Cup
- 2 Top Side Front, D/DD Cup
- 2 Top Side Front, H Cup

### SIZE 18-34 PATTERN SIZE KEY

- 18
- 20
- 22
- 24
- 26
- 28
- 30
- 32
- 34

### SYMBOL KEY

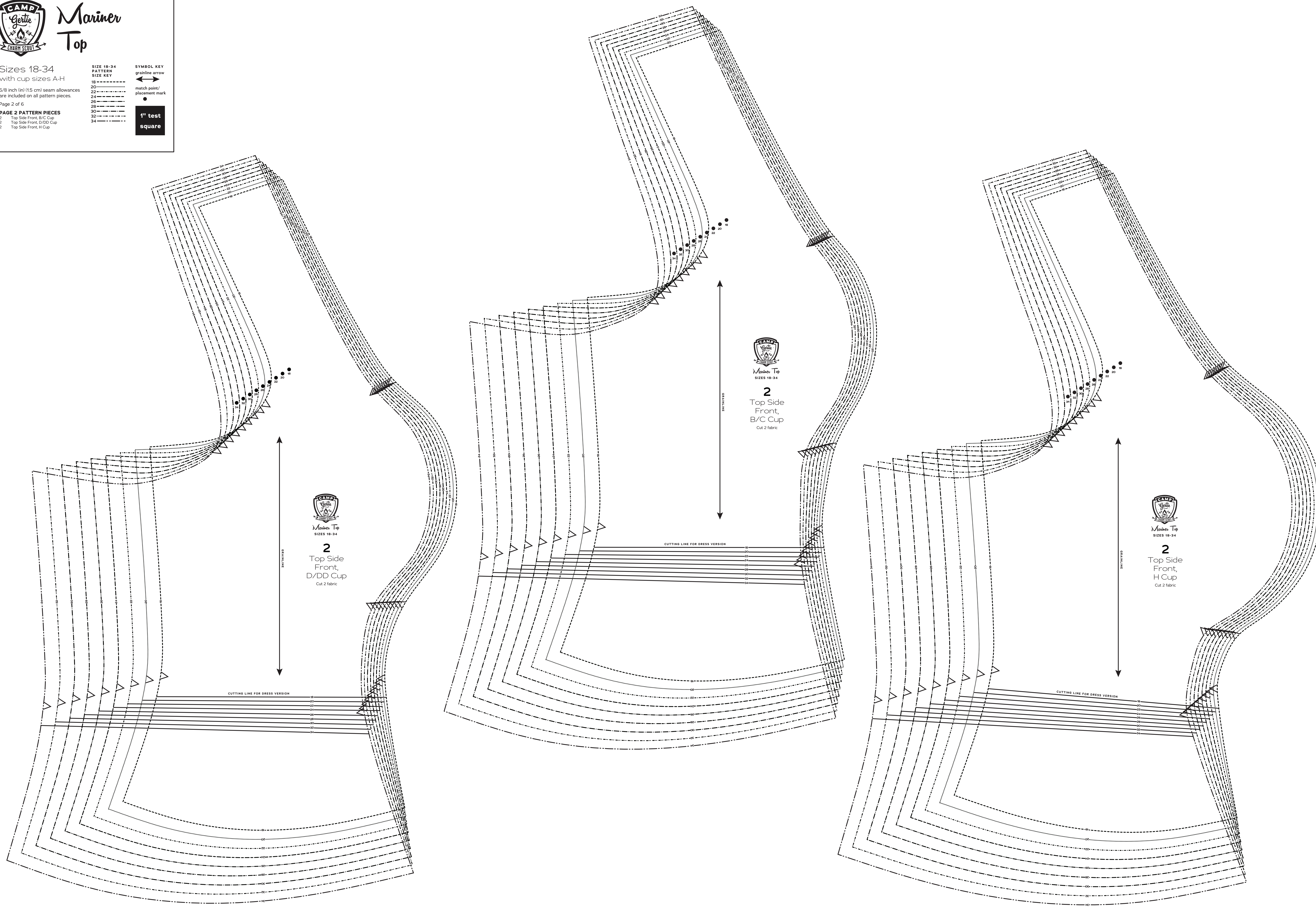
grainline arrow

match point/  
placement mark

1" test  
square

1" test  
square

1" test  
square



  
 Mariner Top  
 SIZES 18-34  
**2**  
 Top Side  
 Front,  
 D/DD Cup  
 Cut 2 fabric

  
 Mariner Top  
 SIZES 18-34  
**2**  
 Top Side  
 Front,  
 B/C Cup  
 Cut 2 fabric

  
 Mariner Top  
 SIZES 18-34  
**2**  
 Top Side  
 Front,  
 H Cup  
 Cut 2 fabric



# Mariner Top

Sizes 18-34  
with cup sizes A-H

5/8 inch (1.5 cm) seam allowances  
are included on all pattern pieces.

Page 3 of 6

### PAGE 3 PATTERN PIECES

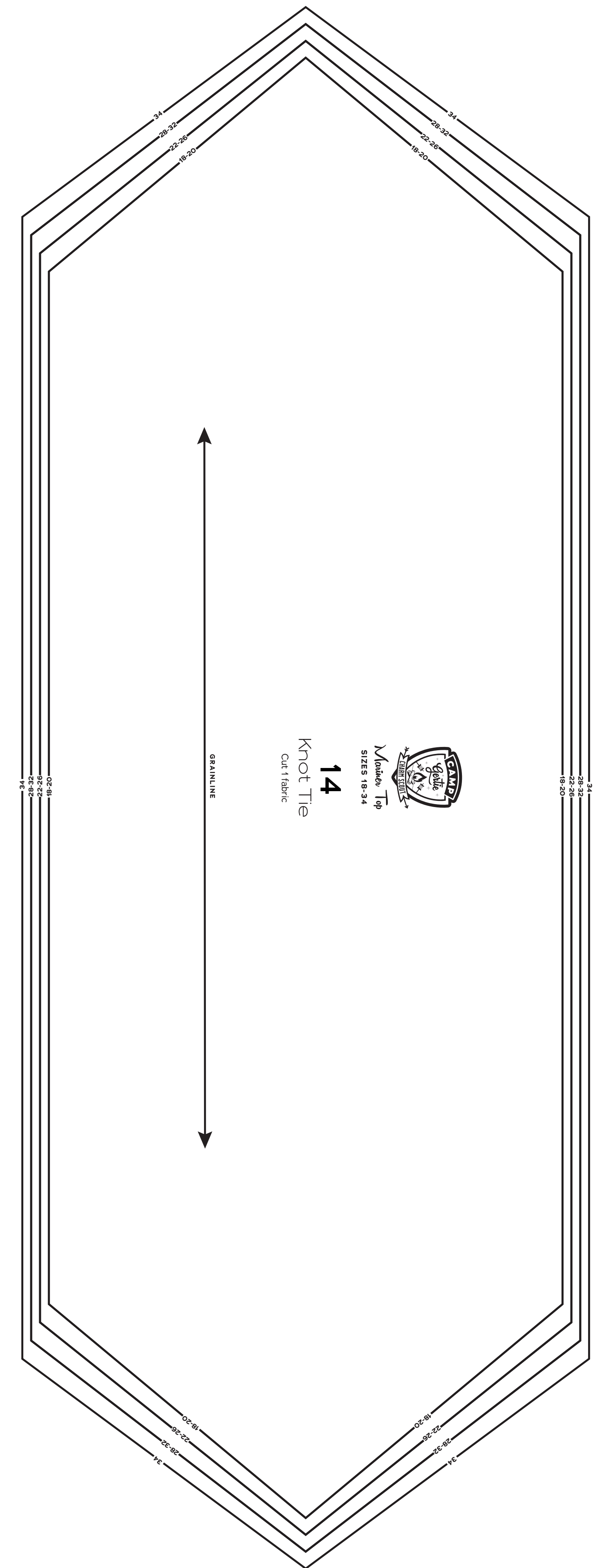
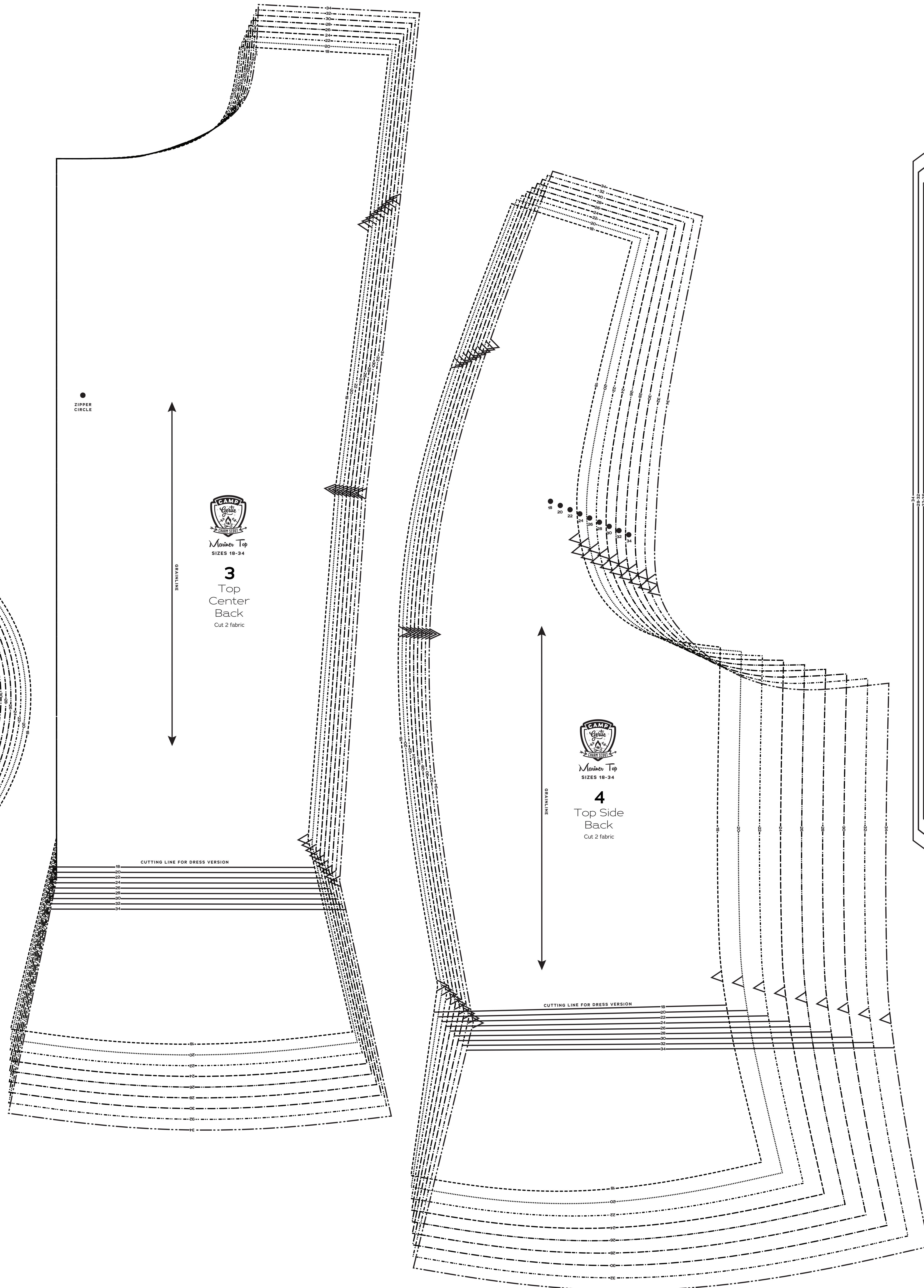
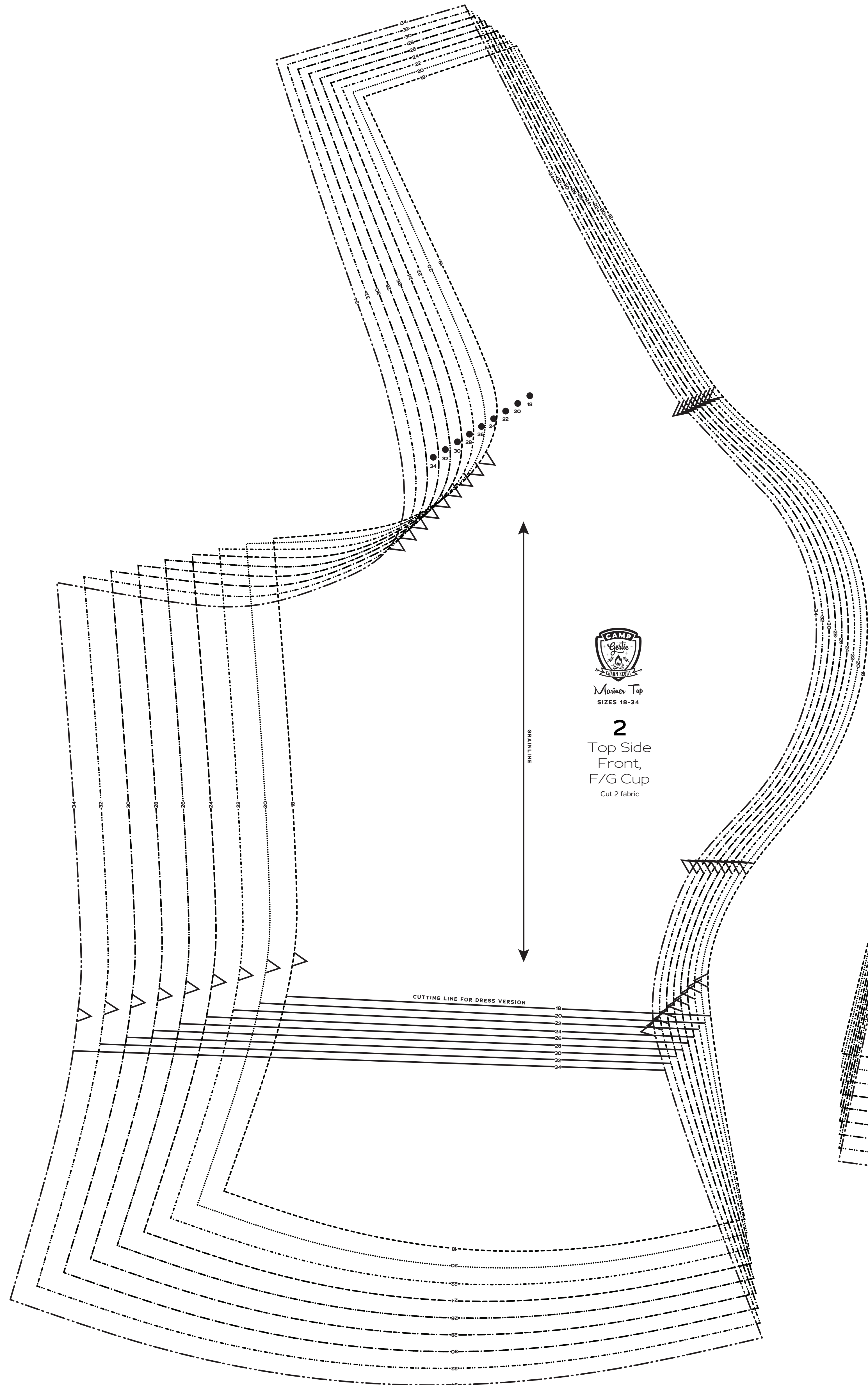
- 2 Top Side Front, F/G Cup
- 3 Top Center Back
- 4 Top Side Back
- 14 Knot Tie

### SIZE 18-34 PATTERN SIZE KEY

- 18 - - - - -
- 20 - - - - -
- 22 - - - - -
- 24 - - - - -
- 26 - - - - -
- 28 - - - - -
- 30 - - - - -
- 32 - - - - -
- 34 - - - - -

### SYMBOL KEY

- grainline arrow
- match point/  
placement mark
- 1" test  
square





# Mariner Top

Sizes 18-34  
with cup sizes A-H

5/8 inch (1.5 cm) seam allowances  
are included on all pattern pieces.

Page 4 of 6

### PAGE 4 PATTERN PIECES

- 5 Sleeve
- 6 Sleeve Band
- 7 Armhole Binding
- 8 Upper Collar
- 10 Front Neck Facing
- 11 Back Neck Facing

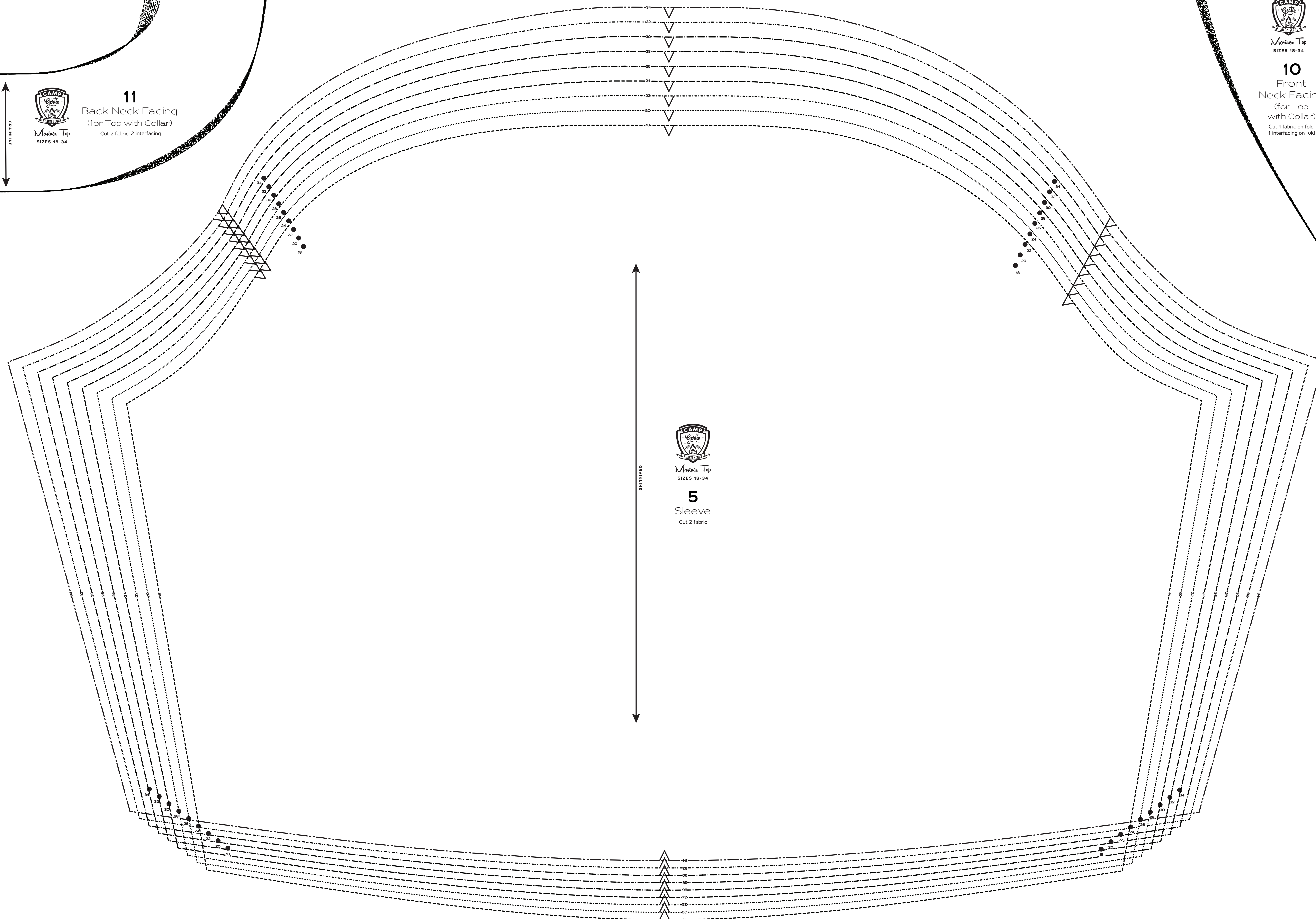
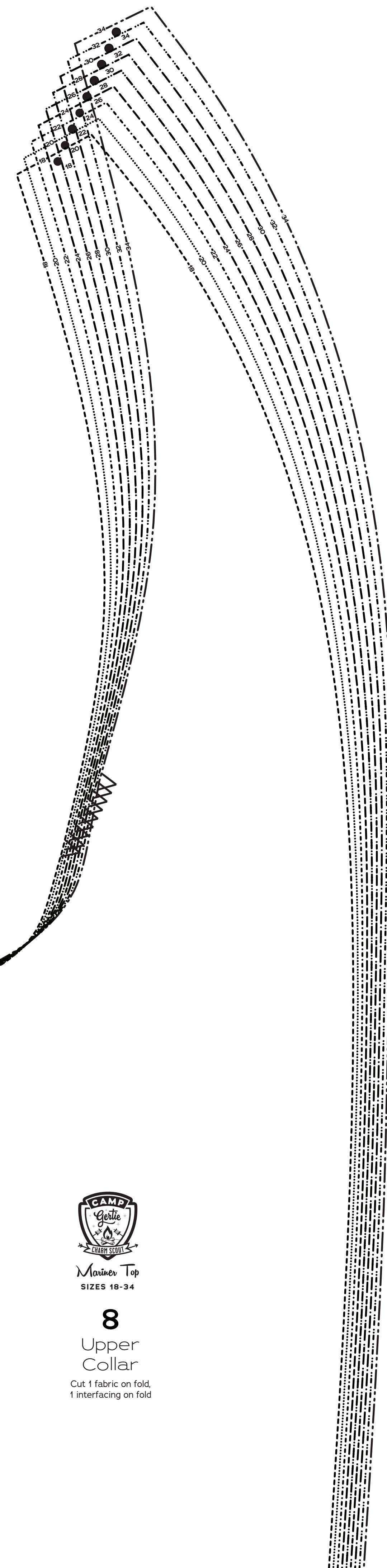
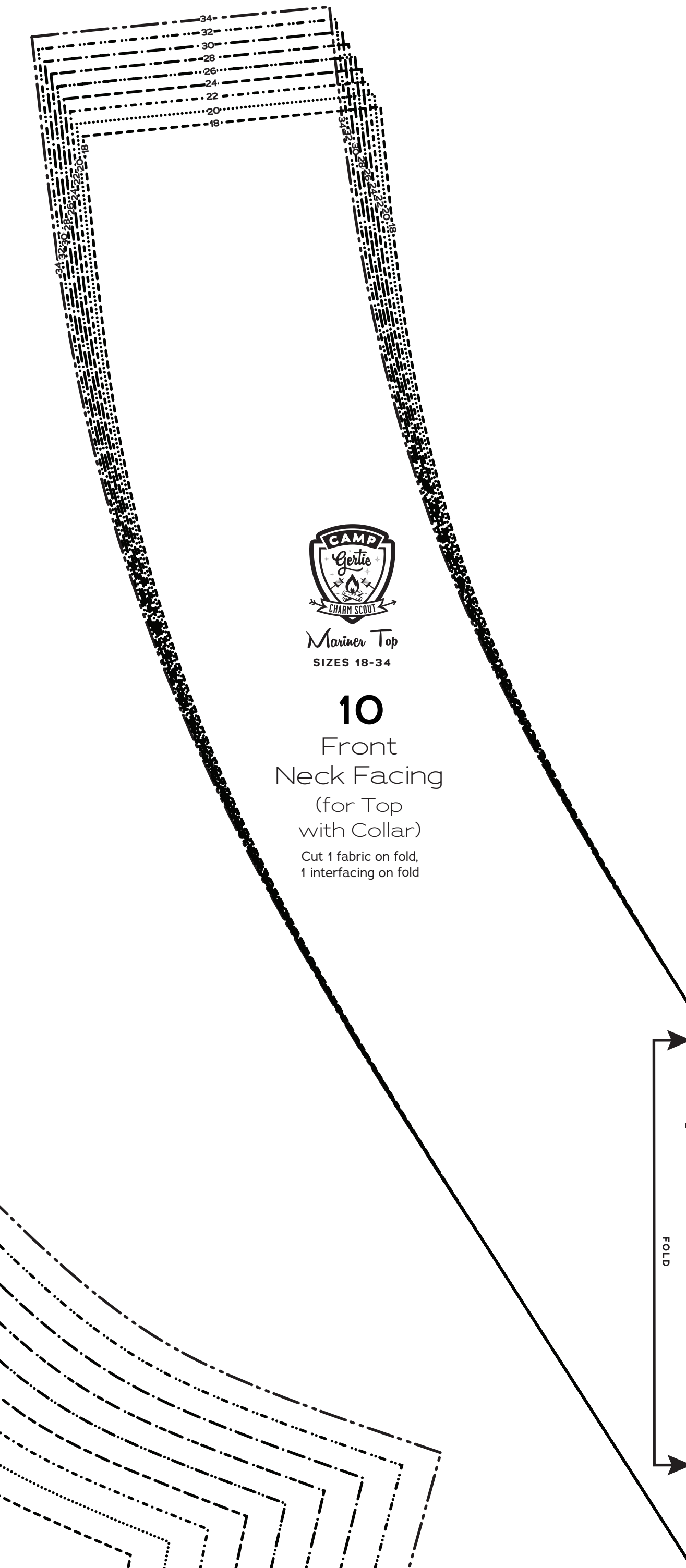
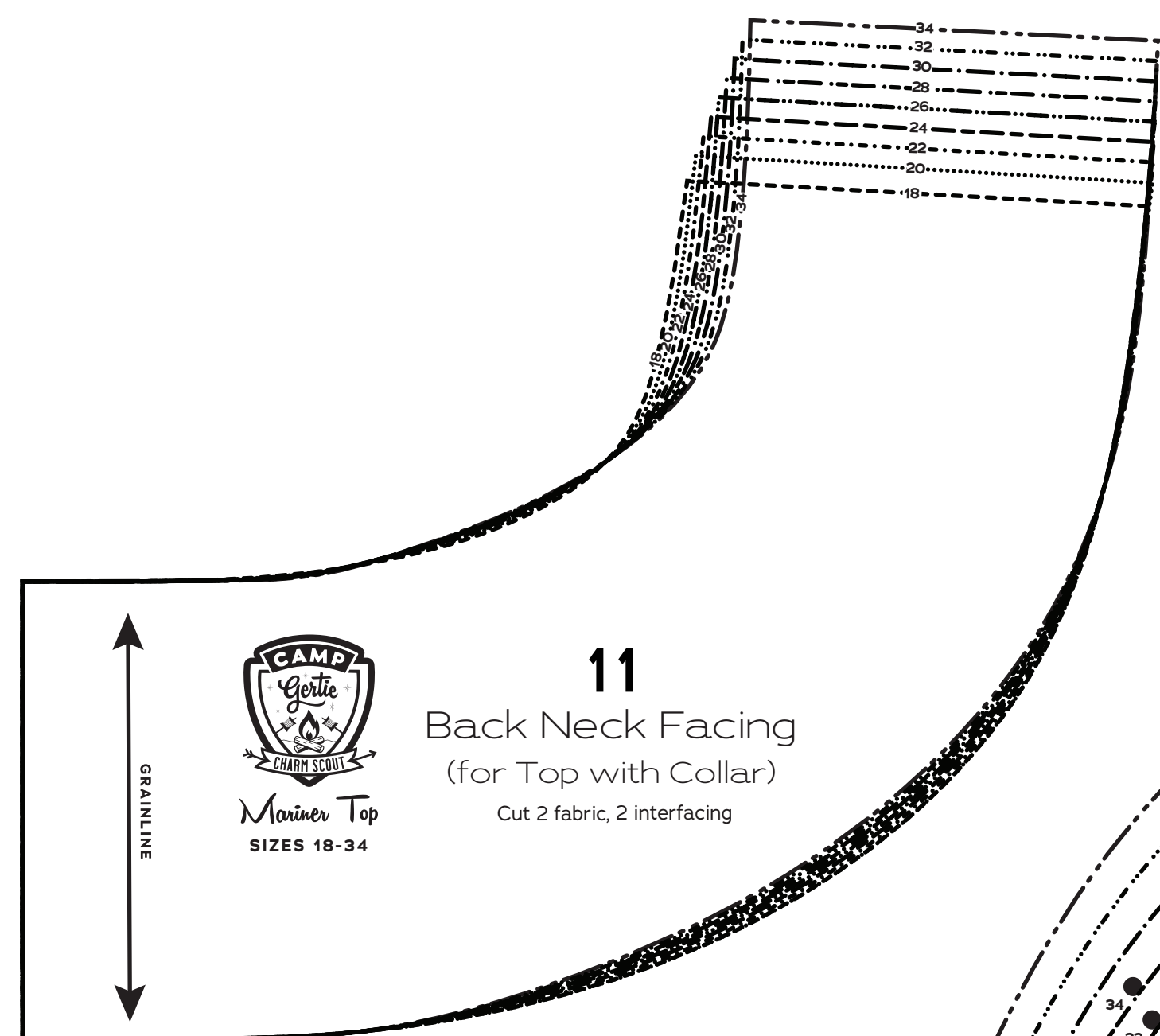
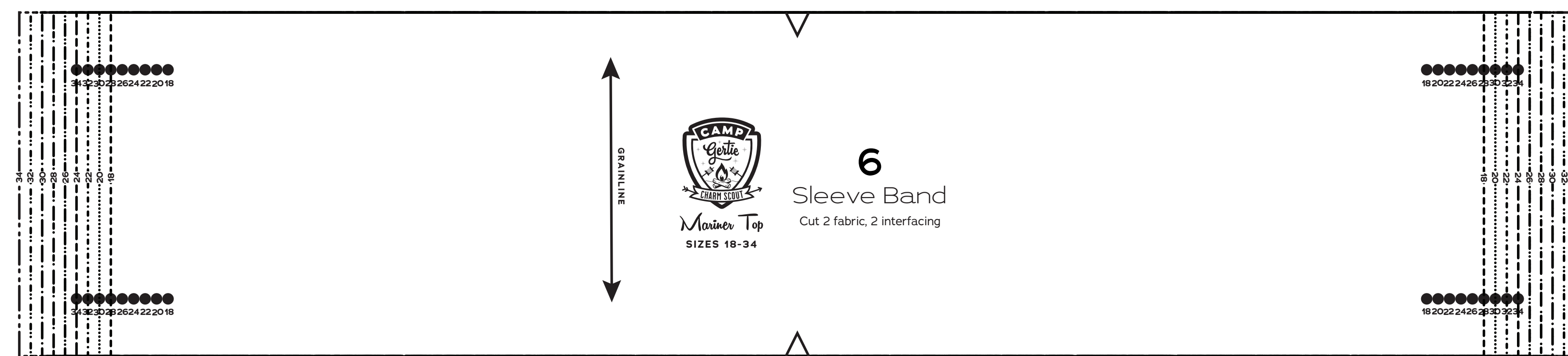
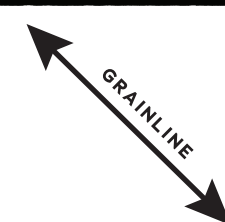
SIZE 18-34  
PATTERN  
SIZE KEY

18  
20  
22  
24  
26  
28  
30  
32  
34

SYMBOL KEY  
grainline arrow  
match point/  
placement mark  
1" test  
square



**7** Armhole Binding  
(for Sleeveless Top/Dress with Collar)  
Cut 2 fabric



**5** Sleeve  
Cut 2 fabric



# Mariner Top

Sizes 18-34  
with cup sizes A-H

5/8 inch (1.5 cm) seam allowances  
are included on all pattern pieces.

Page 5 of 6

### PAGE 5 PATTERN PIECES

- 9 Under Collar
- 12 All-In-One Front Facing, A Cup
- 12 All-In-One Front Facing, F/G Cup
- 12 All-In-One Front Facing, H Cup
- 13 All-In-One Back Facing

#### SIZE 18-34

#### PATTERN

#### SIZE KEY

18 - - - - -

20 - - - - -

22 - - - - -

24 - - - - -

26 - - - - -

28 - - - - -

30 - - - - -

32 - - - - -

34 - - - - -

#### SYMBOL KEY

grainline arrow

match point/  
placement mark

1" test  
square

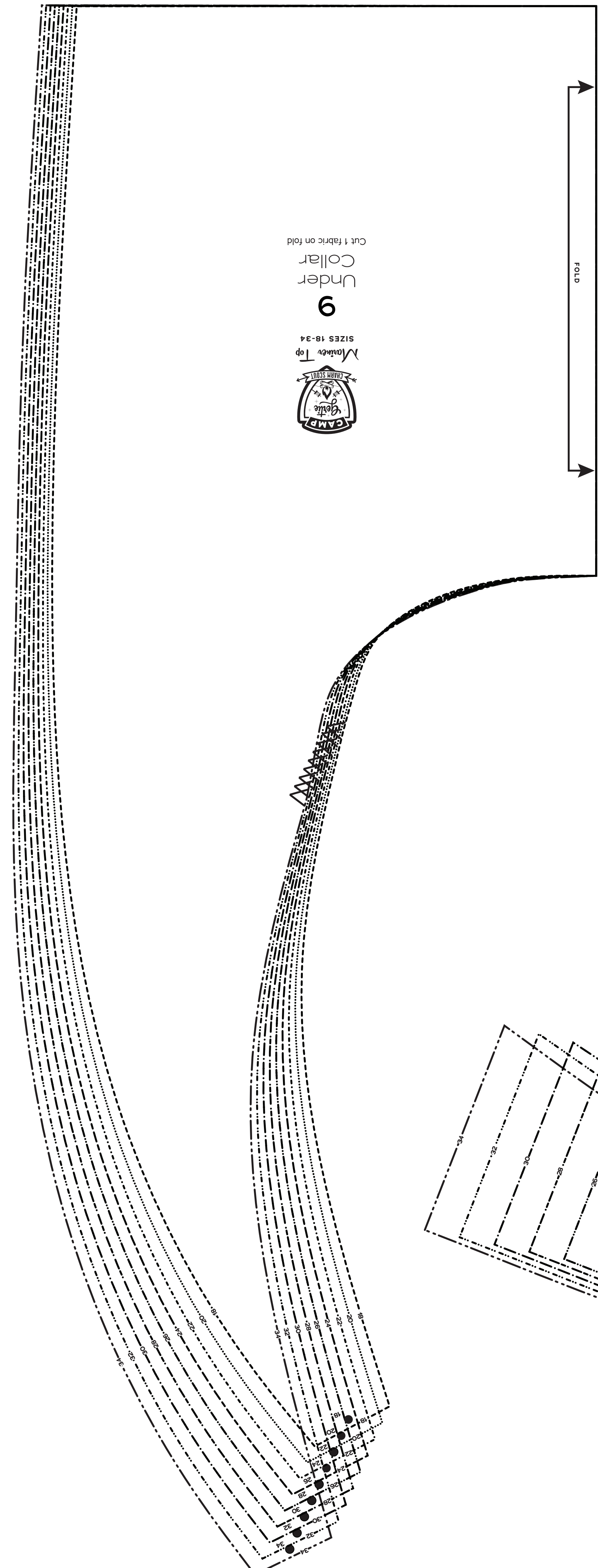
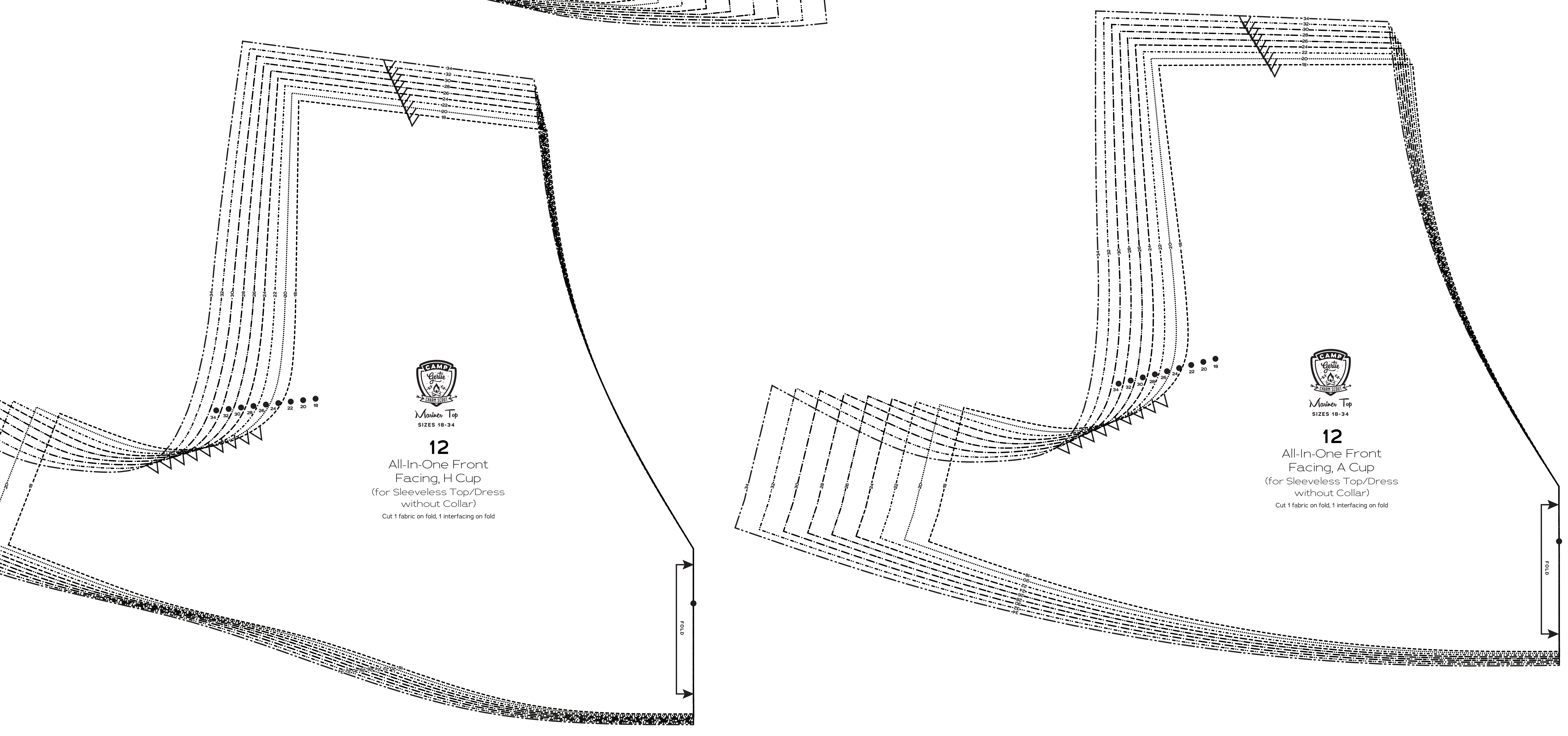
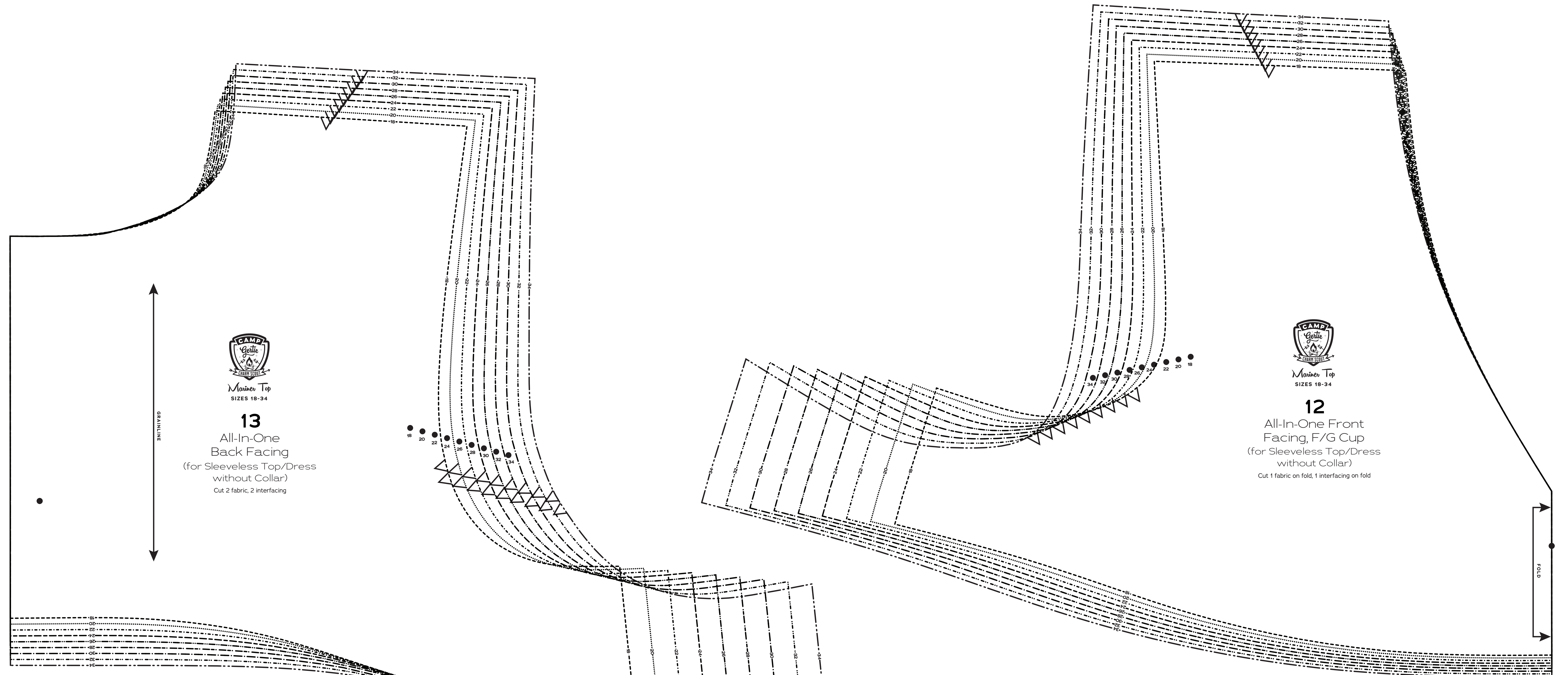
Cut 1 fabric on fold

Under  
Collar

6

SIZES 18-34

Mariner Top





# Mariner Top

Sizes 18-34  
with cup sizes A-H

5/8 inch (1.5 cm) seam allowances  
are included on all pattern pieces.

Page 6 of 6

### PAGE 6 PATTERN PIECES

- 12 All-In-One Front Facing, B/C Cup
- 12 All-In-One Front Facing, D/DD Cup
- 15 Gigantic Bow
- 16 Gigantic Bow Tie
- 17 Gigantic Bow Knot

### SIZE 18-34

### PATTERN

### SIZE KEY

18

20

22

24

26

28

30

32

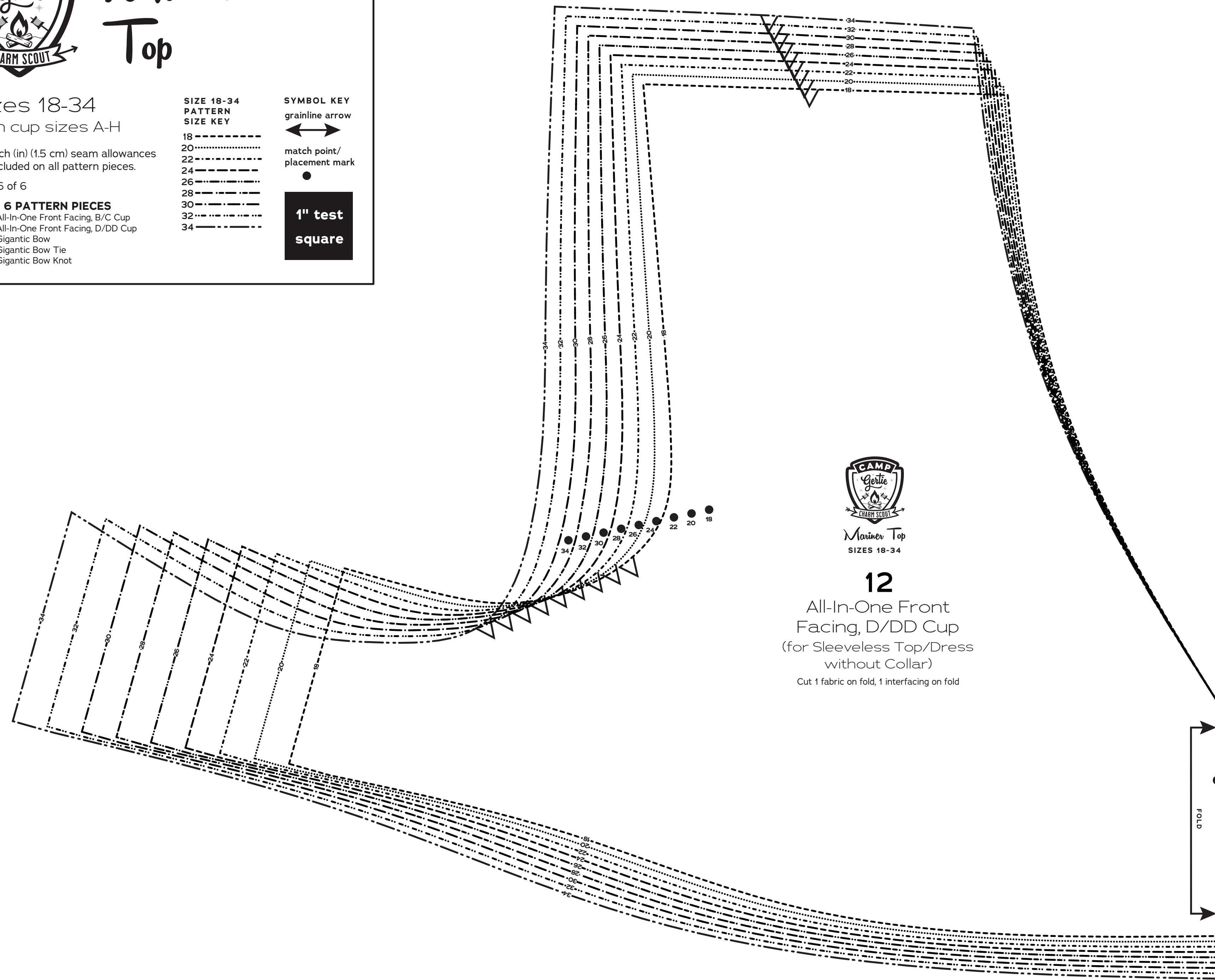
34

### SYMBOL KEY

grainline arrow

match point/  
placement mark

1" test  
square



Mariner Top  
SIZES 18-34

**12**

All-In-One Front  
Facing, D/DD Cup  
(for Sleeveless Top/Dress  
without Collar)

Cut 1 fabric on fold, 1 interfacing on fold

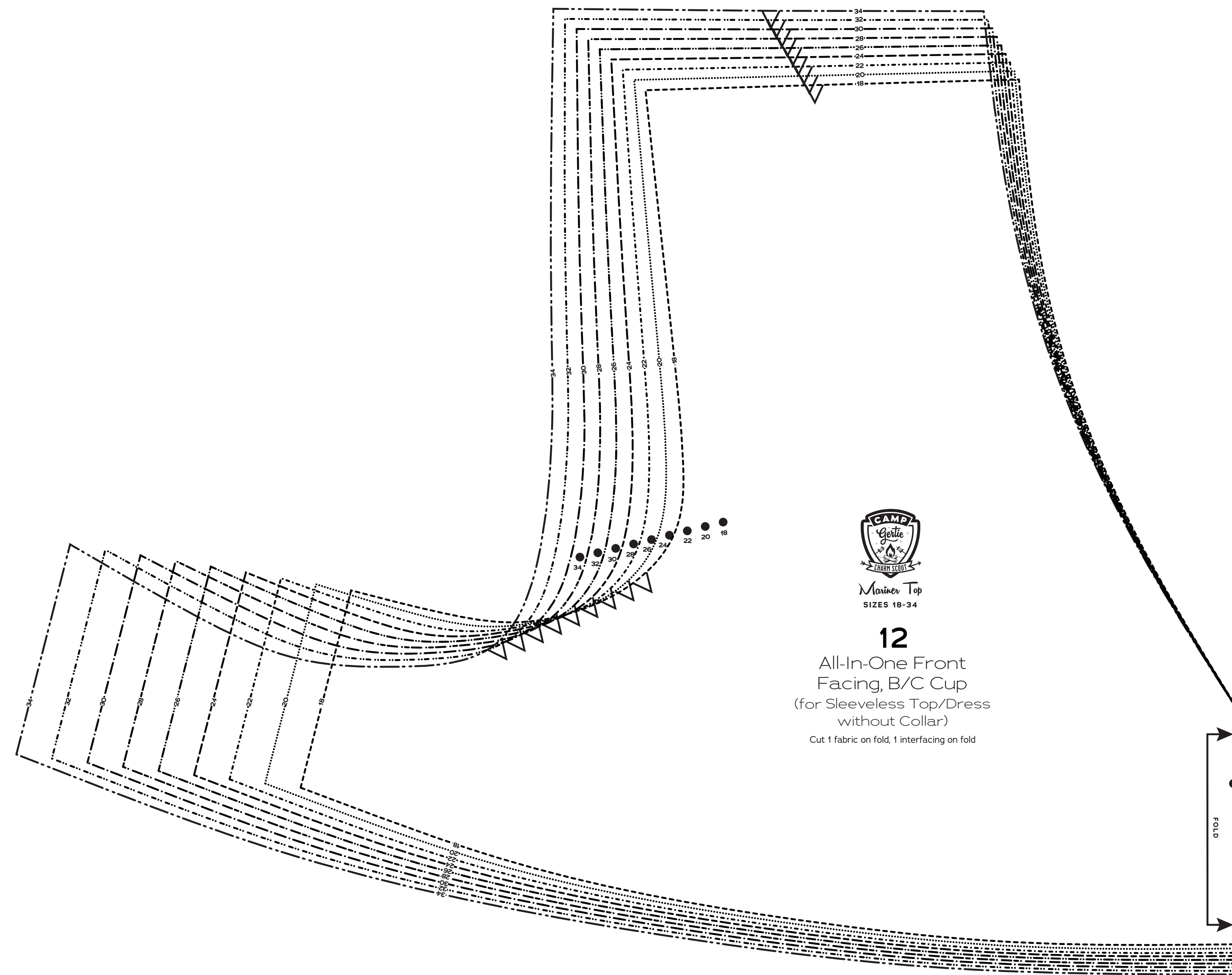


Mariner Top  
SIZES 18-34

**15**

Gigantic  
Bow

Cut 1 fabric

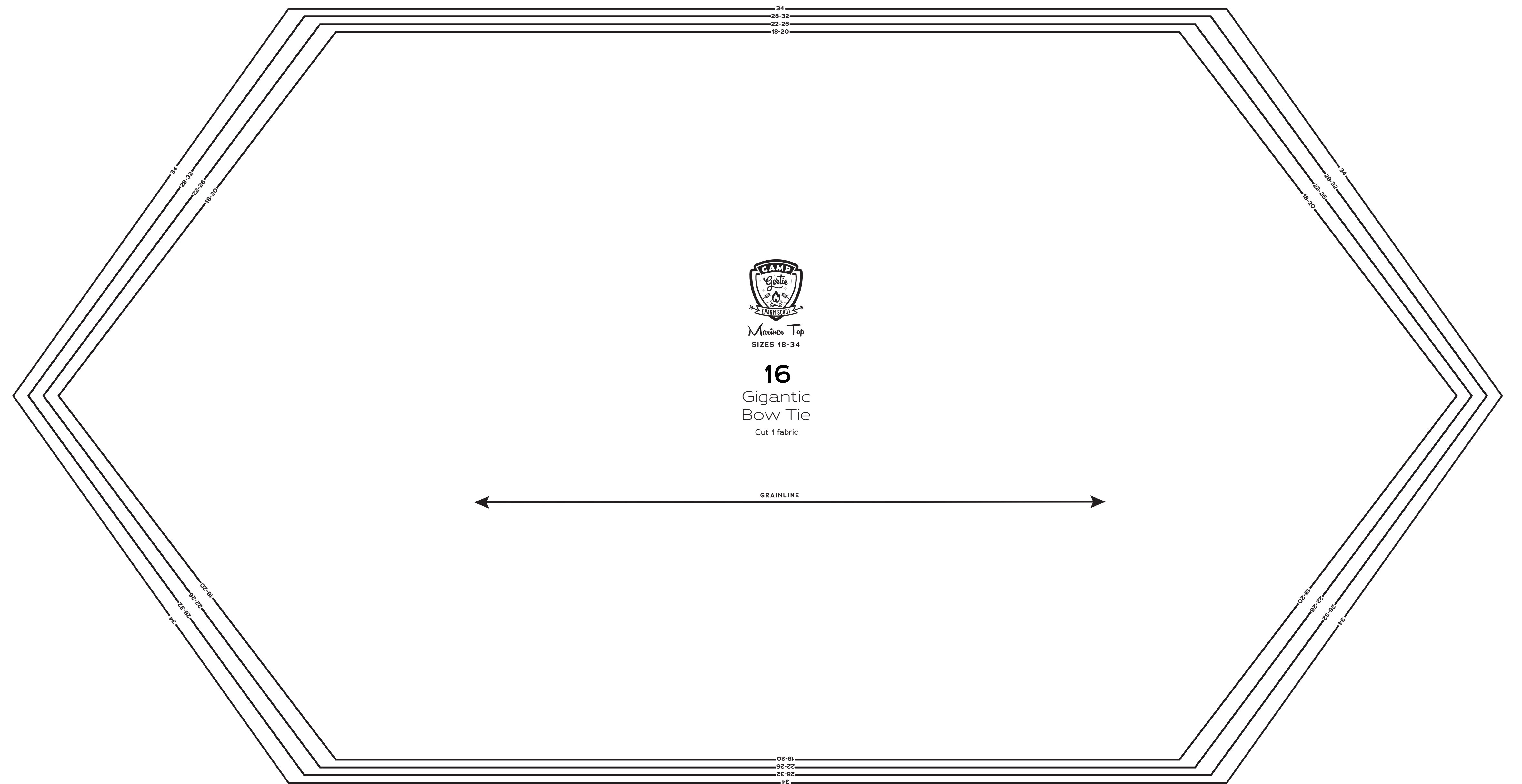


Mariner Top  
SIZES 18-34

**12**

All-In-One Front  
Facing, B/C Cup  
(for Sleeveless Top/Dress  
without Collar)

Cut 1 fabric on fold, 1 interfacing on fold

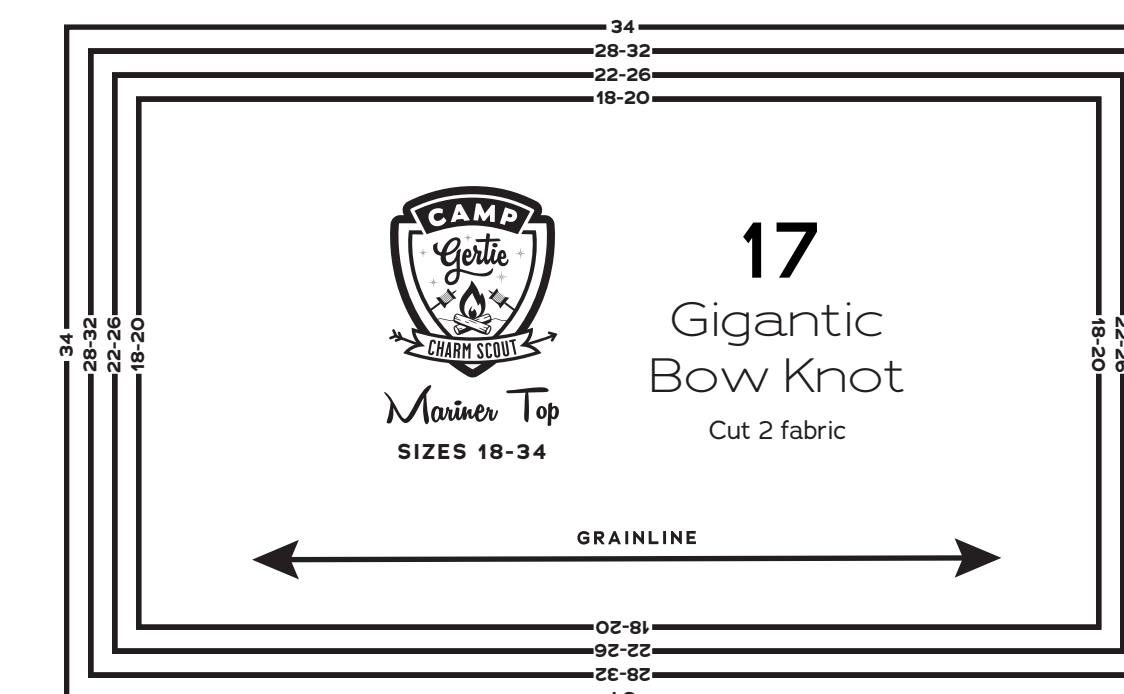


Mariner Top  
SIZES 18-34

**16**

Gigantic  
Bow Tie

Cut 1 fabric



Mariner Top  
SIZES 18-34

**17**

Gigantic  
Bow Knot

Cut 2 fabric