



A PATREON EXCLUSIVE BY CHARM PATTERNS



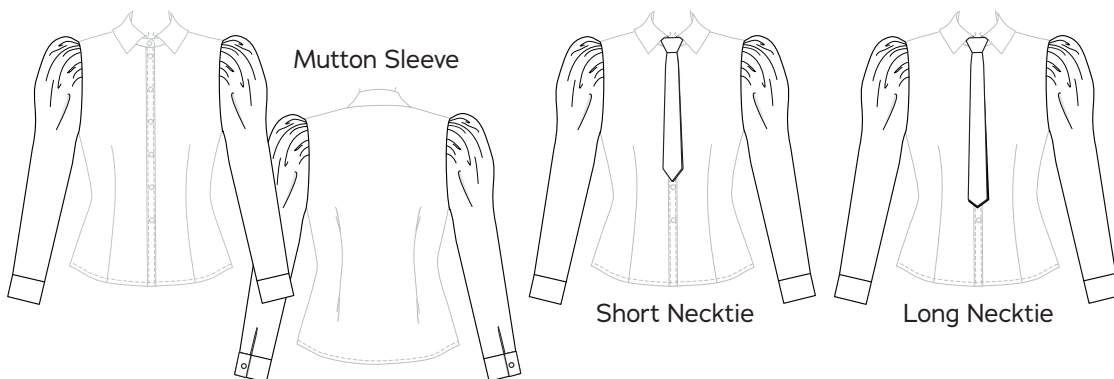
PATSY MUTTON SLEEVE EXPANSION & CHARM SCHOOL NECKTIE

What's a school uniform without matching accessories?

The Charm School Necktie adds the finishing touch to our 2024 sewing school uniform, and it's a perfect menswear and masc addition to your wardrobe in general.

Paired together with this wonderfully dramatic mutton sleeve expansion for the Patsy Blouse, you'll be heading to the top of the class in no time!

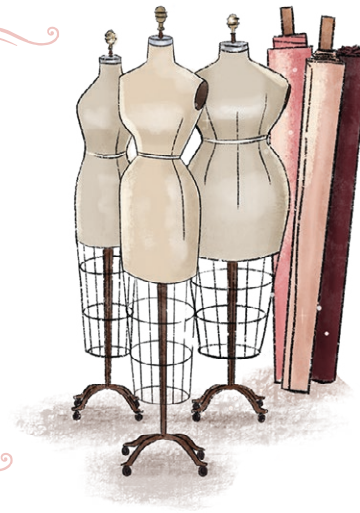
xoxo, Gertie



SIZE CHART

The Patsy Mutton Sleeve Expansion is sized in women's US 2–20 and 18–34. Please use the size chart in the Patsy Blouse instructions to pick your size. The Charm School necktie comes in one size and two lengths.

Not sure which size range to choose? Read more about our [two size ranges here!](#)



FIT NOTES

The Patsy Mutton Sleeve Expansion is fitted at the forearm and wrist but has a generous amount of ease at the sleeve cap and bicep. Use the same size sleeve as your Patsy Blouse. See the charts below for finished bicep measurements.

FINISHED MEASUREMENTS

Sizes 2-20	2	4	6	8	10	12	14	16	18	20
Bicep	16.5 in 41.9 cm	17 in 43.2 cm	17.5 in 44.5 cm	18 in 45.7 cm	18.5 in 47 cm	19 in 48.3 cm	19.5 in 49.5 cm	20 in 50.8 cm	20.5 in 52.1 cm	21 in 53.3 cm

Sizes 18-34	18	20	22	24	26	28	30	32	34
Bicep	19.5 in 49.5 cm	20.25 in 51.4 cm	20.75 in 52.7 cm	21.5 in 54.3 cm	22 in 55.9 cm	22.75 in 57.8 cm	23.25 in 59.1 cm	24 in 61 cm	24.5 in 62.2 cm

REQUIRED YARDAGE & CUTTING LAYOUTS

Note: All pattern pieces are shown in a “without nap” layout. You may need additional yardage for directional prints, stripes, plaids, and other prints that need to be matched across seamlines.

PATTERN PIECES

- Long Mutton Sleeve**
Cut 2 fabric
- Necktie**
Cut 1 fabric, 1 lining

FABRIC NOTES

For the mutton sleeve, we recommend light- to medium-weight wovens, as suggested for the Patsy Blouse: cottons like shirting, flannel, poplin, broadcloth, chambray, sateen, pique, twill, and lawns; rayon or tencel twill, gabardine, or crepe; silk or synthetic crepe and satin; gabardine; and linen and linen blends.

For the necktie, we recommend the light- to medium-weight wovens listed above as well as wool suitings, flannel, and tweed; brocade; and silk/wool blends. The necktie can be self-lined or you can use lining fabrics like lightweight silks, silk/cotton blends, rayon bemberg, acetate, or silky polyester.

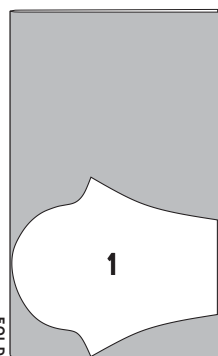
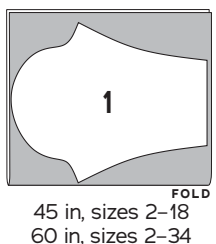
MATERIALS & NOTIONS

- Fabric for the sleeves
- Two 6 inch (in) (15 cm) by 18 in (45 cm) rectangles of crisp tulle for the sleeve cap support
- Fabric for the necktie
- Lining fabric for the necktie
- Thread to match

Sleeve, Fabric (1)

	Size 2-18	Size 20-34
45 in	3/4 yd 0.7 m	1 5/8 yd 1.5 m

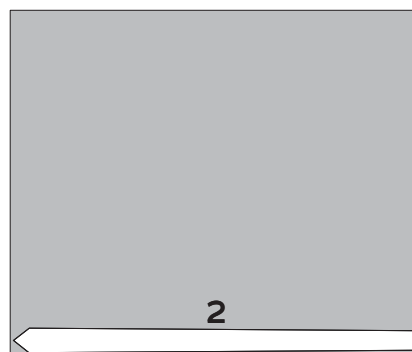
	Size 2-10	Size 12-34
60 in	3/4 yd 0.7 m	7/8 yd 0.8 m



This layout is cut on a crosswise fold, as shown. Open up the full width of the fabric and make a fold perpendicular to the selvages.

Tie, Fabric and Lining (2)

	Short Tie	Long Tie
45 in	1 1/2 yd 1.4 m	1 3/4 yd 1.6 m



KEY TO LAYOUTS

- Right side of pattern piece
- Wrong side of pattern piece

Be sure to note whether the pieces are cut on a double or single layer of fabric. For a double layer, there will be a note indicating FOLD on the layout.

SEWING INSTRUCTIONS

BEFORE SEWING

Transferring marks: use dressmaker's tracing paper and a tracing wheel to transfer all pattern markings to the wrong side (WS) of your fabric. Mark pattern notches by snipping into the seam allowance with the tip of your scissors.

NOTES

- 5/8-in (1.5 cm) seam allowances are included on all pattern pieces, except where otherwise noted.
- Press your stitching lines after every step, even when not specified in the instructions. You do not need to press gathering or basting stitches.
- The Charm School Necktie comes in two lengths. For a shorter tie, cut the pattern pieces at the short tie cutting line.

SEW THE PATSY MUTTON SLEEVE

The Patsy Long Mutton Sleeve Expansion (1) replaces the Patsy Blouse Long Sleeve (11).

Follow the instructions to sew your Patsy Blouse to the Sleeve section. Begin constructing the sleeve with the Patsy Blouse Sleeve Placket Binding section and follow all instructions for the Long Sleeve. Before setting the sleeves into the blouse bodice, insert the tulle sleeve cap as below.

1. Gather tulle: fold one tulle rectangle in half lengthwise, WS together, and treat as one layer. Using a 4-mm to 5-mm-long gathering stitch, sew two lines of gathering stitches along the raw long edge of the

tulle rectangle. Sew the first line of gathering stitches 1/2 in (1.3 cm) from the raw edge and the second line 1/4 in (6 mm) from the raw edge. Do not backstitch to lock your stitches. Pull up bobbin threads to gather.

2. Attach tulle: pin the gathered edge of the tulle to the WS of the sleeve cap, concentrating the gathered tulle evenly between the circles. Baste with a 1/2-in (1.3 cm) seam allowance.

Return to the Patsy Blouse instructions at the All Blouses with Sleeves section to insert the sleeves into the blouse and finish the garment. Fluff the tulle inside the sleeve cap to support the mutton sleeve.

SEW THE NECKTIE

1. Assemble necktie: press the short straight edge of the Necktie (2) and necktie lining 5/8 in (1.5 cm) to the WS. With right sides (RS) together, pin the necktie and necktie lining along the long edges and pointed short edge. Stitch the long edges and pointed short edge, pivoting at corners and leaving the short straight edge unstitched. Clip corners and grade seam allowances so the necktie fabric is wider and the necktie lining is narrower. Turn RS out and press, just rolling the necktie lining to the WS so it is hidden when worn.

2. Finish necktie: pin the short edge, WS together, tucking the pressed seam allowances inside the necktie. Edgestitch by machine or slipstitch by hand to finish. Press flat.

Enjoy your fun new Patsy Mutton Sleeve and Charm School Necktie!

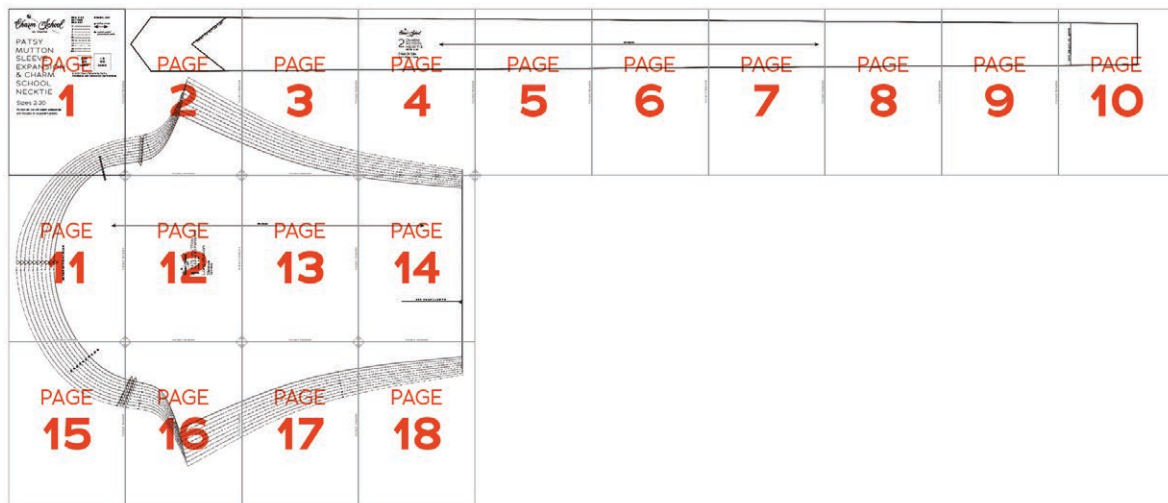
PATTERN PIECE LOCATION GUIDE

Here is a list to help you locate the pattern pieces on the letter-size tiled pages and AO pattern sheets. The tiled pieces and AO sheets are included as separate PDF files as part of this digital pattern.

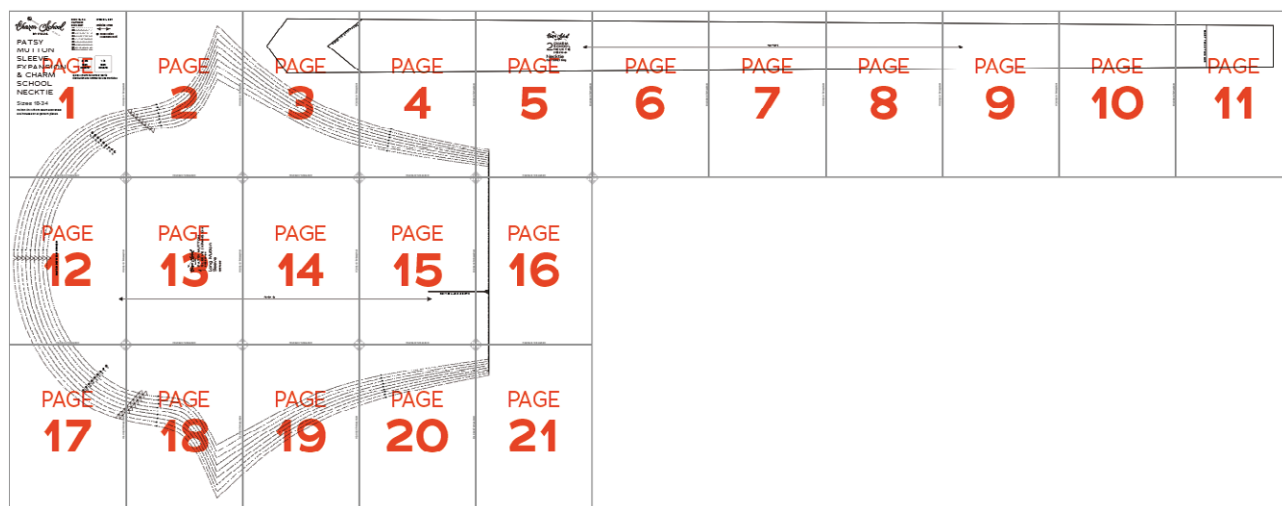
SIZES 2-20			SIZES 18-34				
PC#	Piece Name	Tiled	AO	PC#	Piece Name	Tiled	AO
1	Mutton Sleeve	1-4, 11-14, 15-18	1	1	Mutton Sleeve	1-5, 12-16, 17-21	1
2	Necktie	2-10	1	2	Necktie	3-11	1

TILING MAPS

SIZES 2-20



SIZES 18-34



HOW TO USE THIS PATTERN

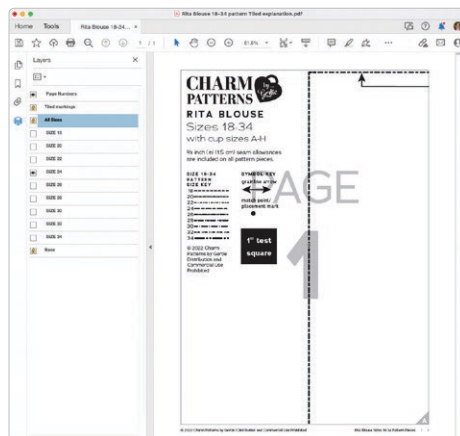
The pattern pieces are tiled so you can print them on Letter (8½ in x 11 in) or A4 size paper. You can also send the A0 pattern sheet PDF to a local or online printer (like ThePlottedPattern.com) to print on large sheets (36 in x 48 in for U.S. or A0 for international).

This pattern includes size layers. To get the best results, open either the Tiled or A0 pattern pieces PDF in [Acrobat Reader](#).

Open the Layers Palette (View>Show/Hide>Navigation Panes>Layers) and hide all of the layer(s) except for the ones you want to print by clicking on the eye icon.

The All Sizes and Tiled Markings layers have general pattern information and will always print.

You may choose to turn off the Page Numbers layer. The page numbers will still appear at the bottom of each page in the footer.



WORKING WITH THE TILED PIECES

Go to File>Print and change the page range to the pages you need for the pieces you've chosen (see Pattern Pieces Printing Index). Make sure the Page Sizing settings to 100% or Actual Size. Test after printing by measuring the 1 inch or 2 cm test box on the first page of the pattern pieces.

Cut apart any pattern pieces that share a page, then fold back or cut off the page margins on each page as marked.

Match the letters in the gray corner diamonds. Tape the pages together, butting up the folded or cut page edges with the gray margin lines.

WELCOME TO



Class is in session!

Charm School is a private and exclusive dressmaking academy where your fantasies are stitched into reality.

Enjoy these benefits as part of your Charm School enrollment. For more access, upgrade now to a higher tier [on Patreon](#).

As you explore the hallowed halls, remember our four tenets: **Education, Community, Glamour, and Mastery**. And never forget the motto that generations before us have pledged: *Setire Phantasia*. **Feel the fantasy!**

STUDENT RESOURCES

- Easily find your homework and patterns using the Patreon archive visual index on our [Patreon page](#).
 - Learn which patterns can combine together from our [mix-and-match spreadsheet](#).
 - Shop all Charm sewing patterns and accessories in the [Charm shop](#).
- On Instagram:** Stay in the loop and get inspired by Gertie and other students.
- On YouTube:** Learn beginner and advanced sewing skills and techniques with comprehensive tutorials.



2024 PATREON TIER COMPARISONS



	Sewing Circle	Glamour Circle	Princess Circle	Inner Circle
2024 Price	\$9	\$12	\$20	\$25
Monthly sewing pattern	✓	✓	✓	✓
Monthly pattern video	✓	✓	✓	✓
Monthly live event	✓	✓	✓	✓
Monthly sneak peek	✓	✓	✓	✓
Discord channel	✓	✓	✓	✓
One Charm PDF gift per year (Gertie's choice)	✓	✓	✓	✓
First access to Charm merchandise	✓	✓	✓	✓
<i>Vintage by Gertie</i> quarterly magazine	x	✓	✓	✓
Monthly bonus content: pattern or digital download	x	✓	✓	✓
40% off one print or PDF Charm Pattern (3x per year)	x	x	✓	✓
Annual physical gift	x	x	✓	✓
Charm Pattern sneak peaks	x	x	✓	✓
100% off all new Charm Patterns when they are released (in PDF)	x	x	x	✓
PDF Charm sloper of the Charm Bodice Block (not released to the public)	x	x	x	✓
5% off and first dibs on signing up for Gertie's 2024 in-person Charm Sewing Retreats	x	x	x	✓
Regular exclusive live event as our Inner Circle board of advisors	x	x	x	✓
Names listed as Inner Circle patrons in <i>Vintage by Gertie</i> magazine	x	x	x	✓
20% off Charm merchandise, 2x per year, plus access to past annual gifts (according to availability)	x	x	x	✓

NOW AVAILABLE FROM CHARM PATTERNS



You will also find these free PDF patterns in our shop:



Read all of Gretchen Hirsch's books to advance your sewing skills!
Available to purchase or order from your favorite bookseller.

