

CHARM ARTIST COLLECTIVE SEWRENA COLLECTION

Sizes 2-20
with cup sizes A-H

5/8 inch (1.5 cm) seam allowances are included on all pattern pieces.

PAGE 1 OF 3

PATTERN PIECE INDEX

- 1 Front Neck Facing
- 2 Back Neck Facing
- 3 Short Sleeve
- 4 Sleeve Hem Facing
- 5 Petal Collar Front
- 6 Petal Collar Side
- 8 Petal Collar Facing
- 9 Petal Cuff
- 10 Petal Cuff Facing
- 11 French Cuff
- 14 Dickey Collar

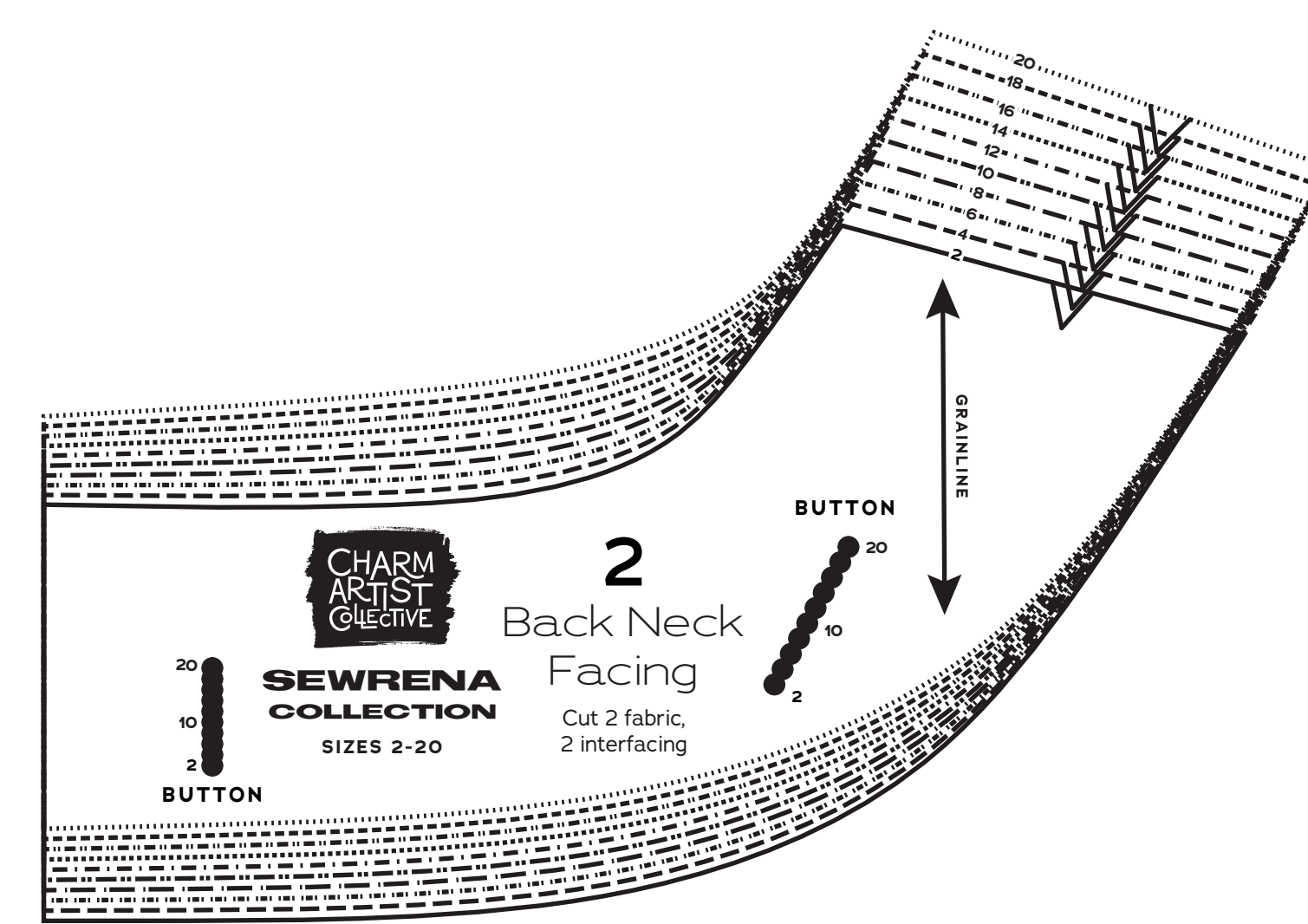
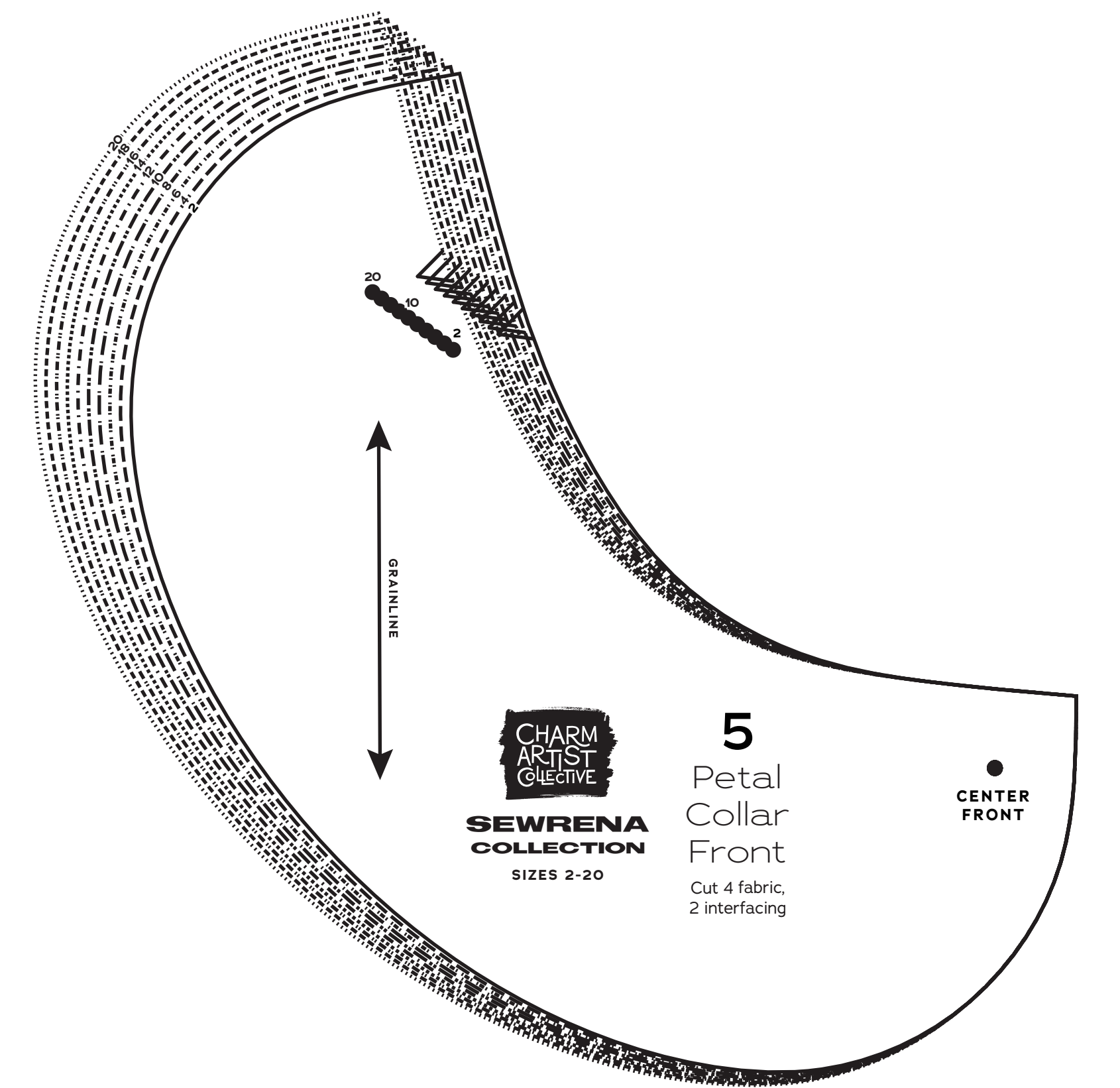
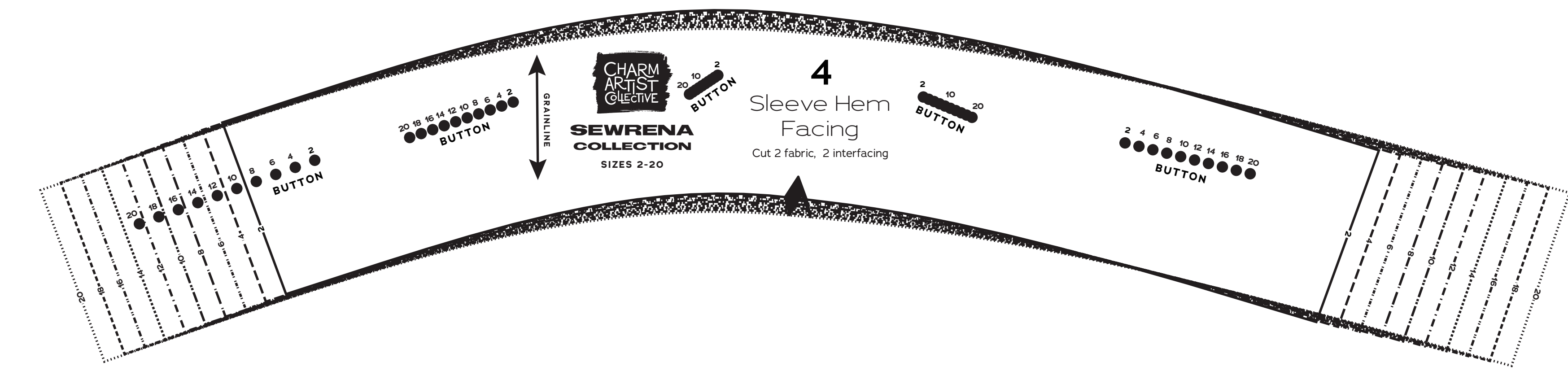
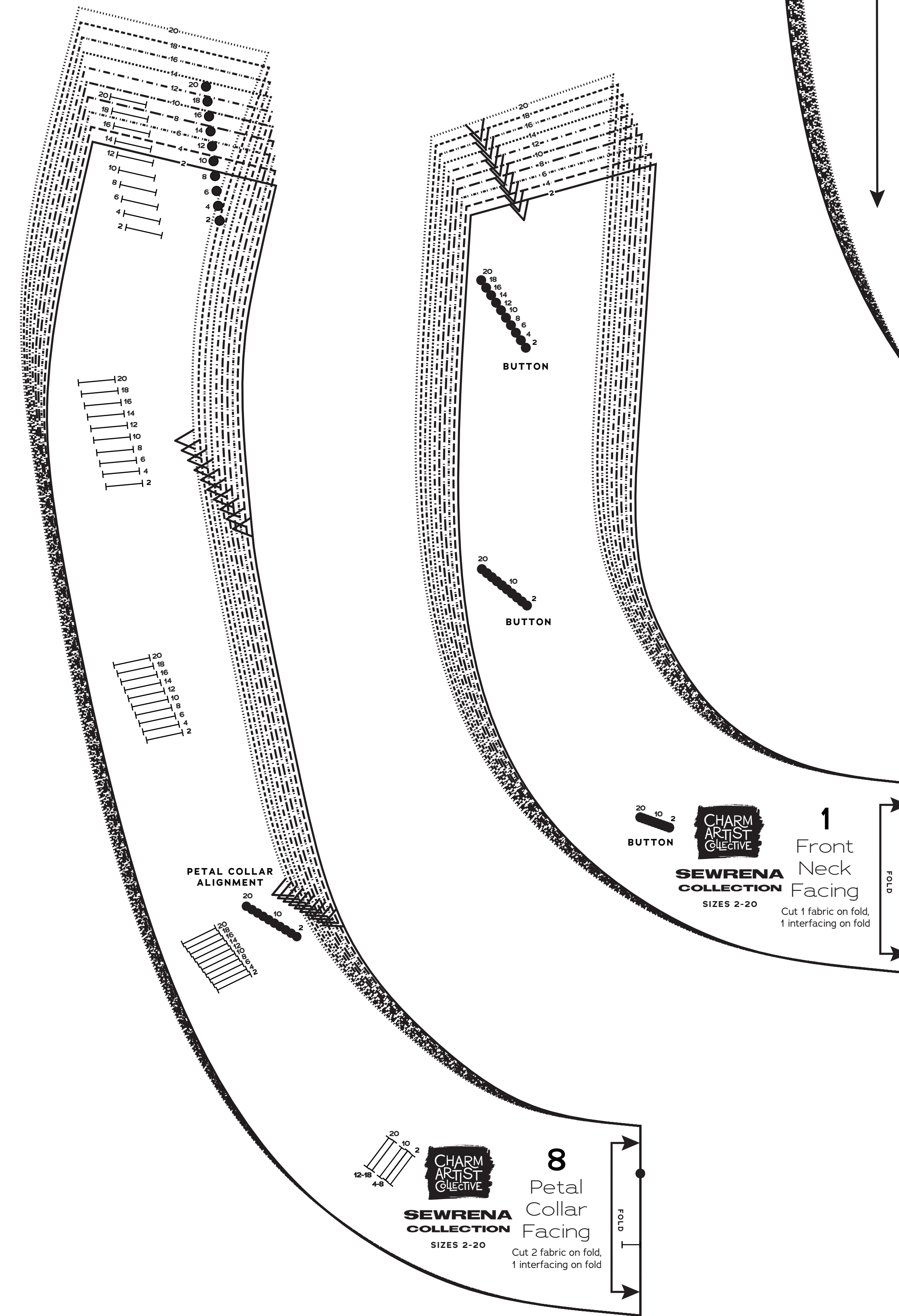
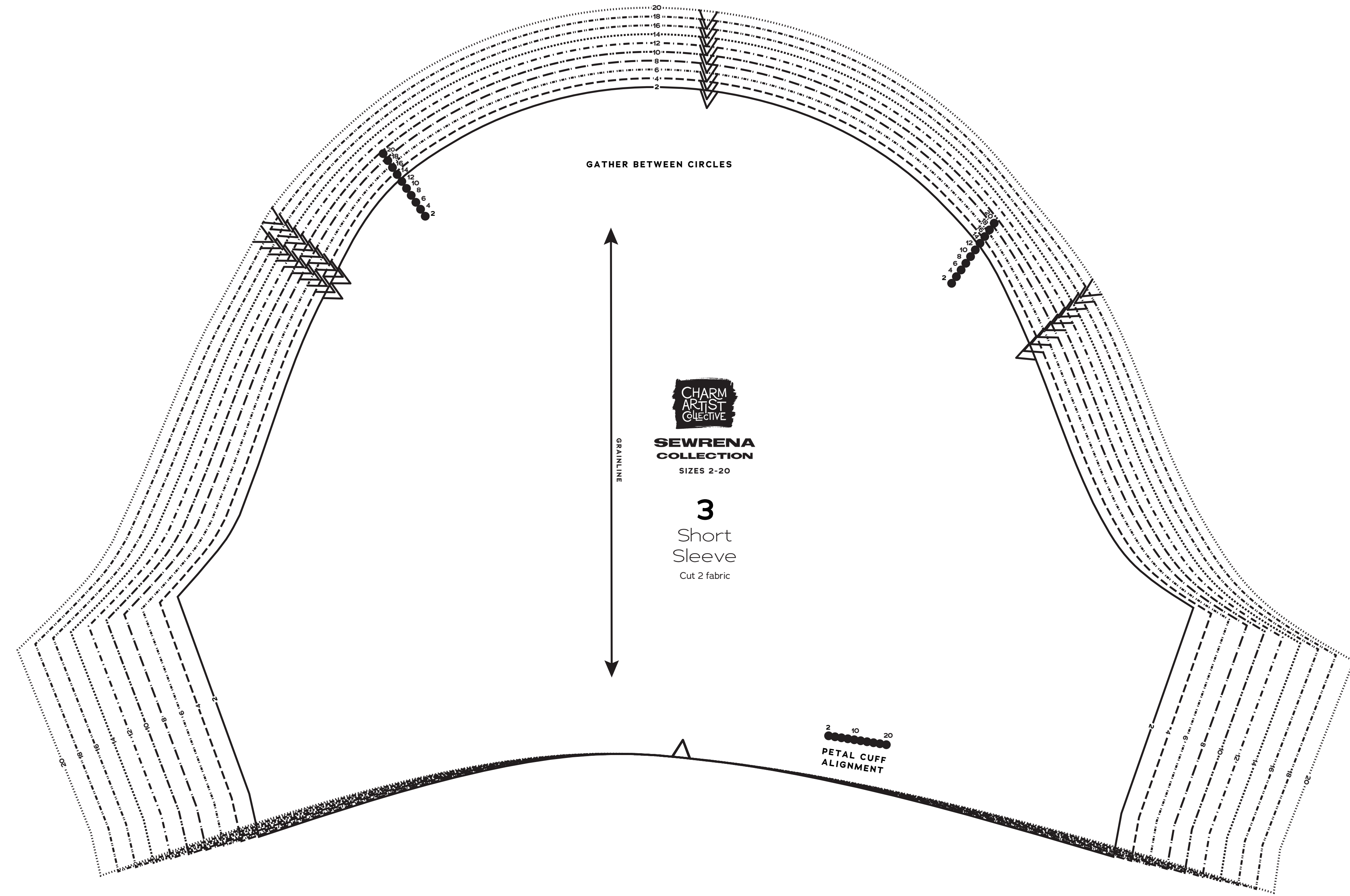
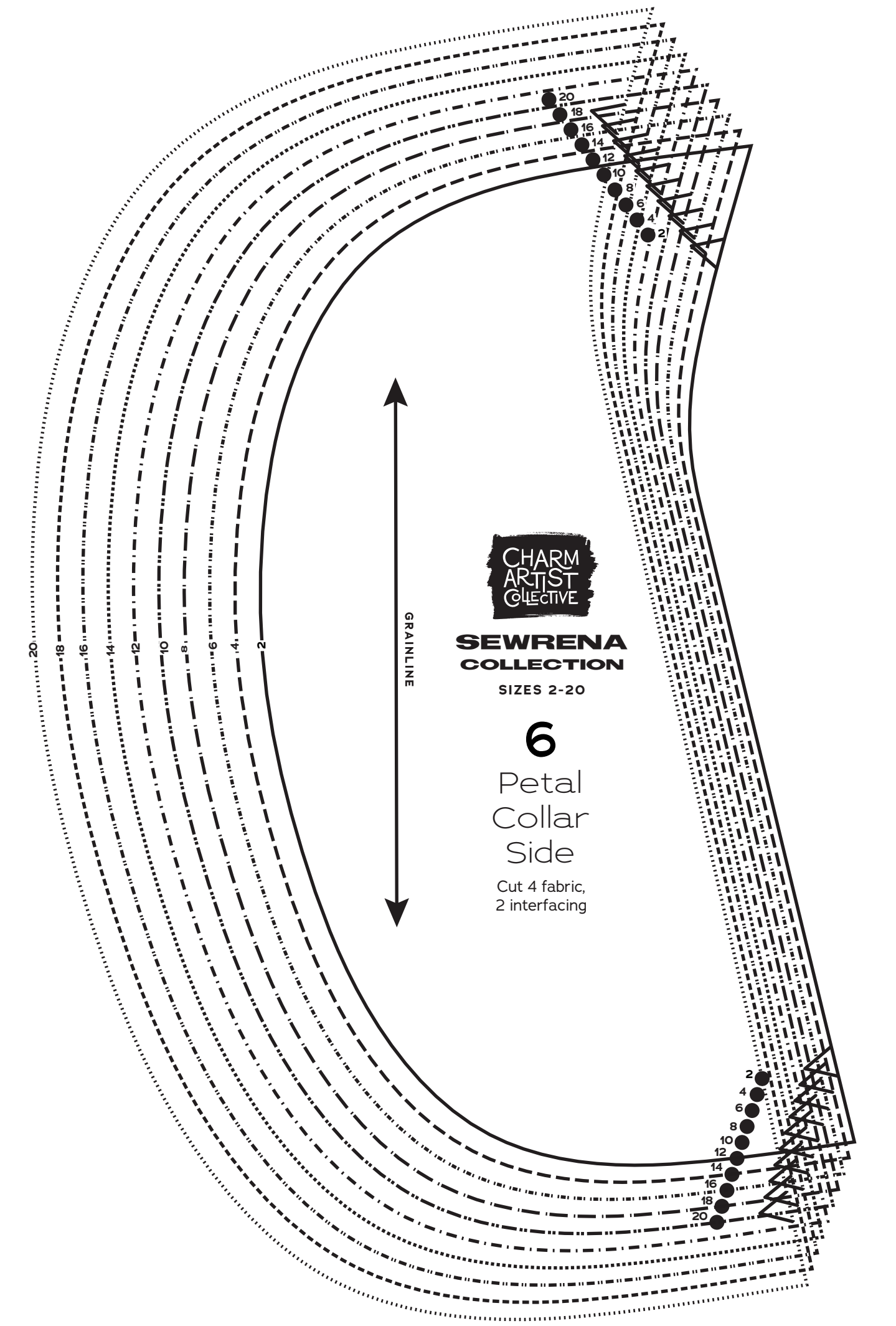
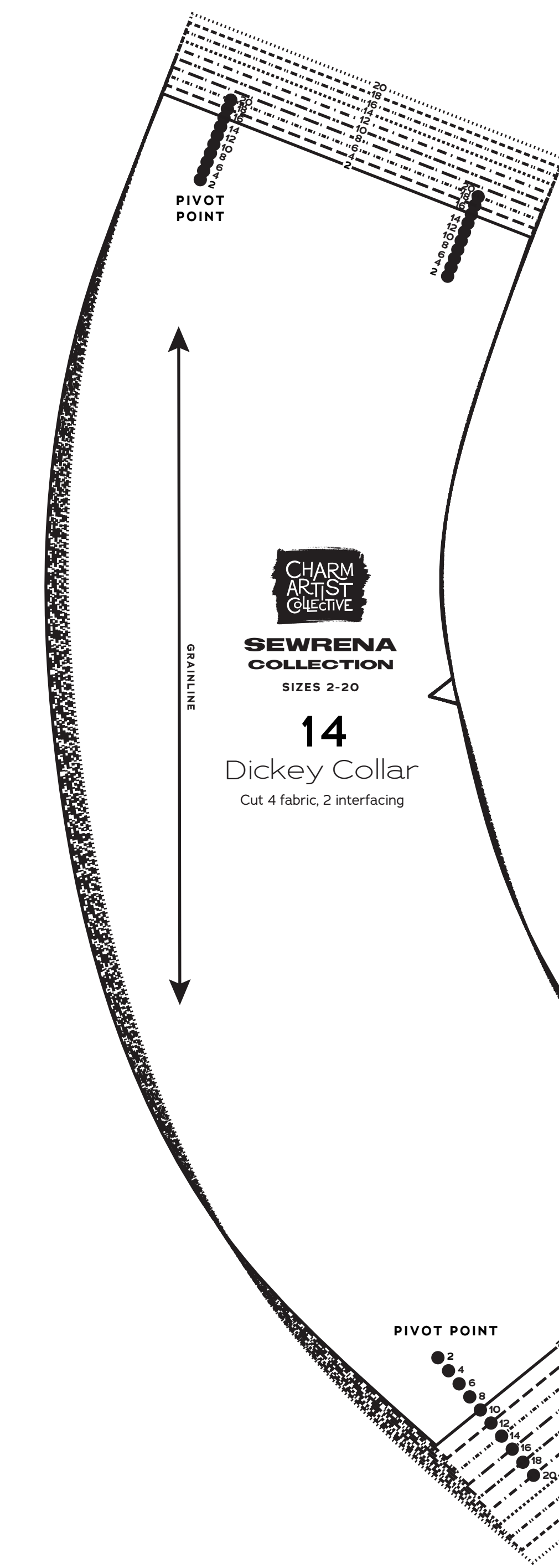
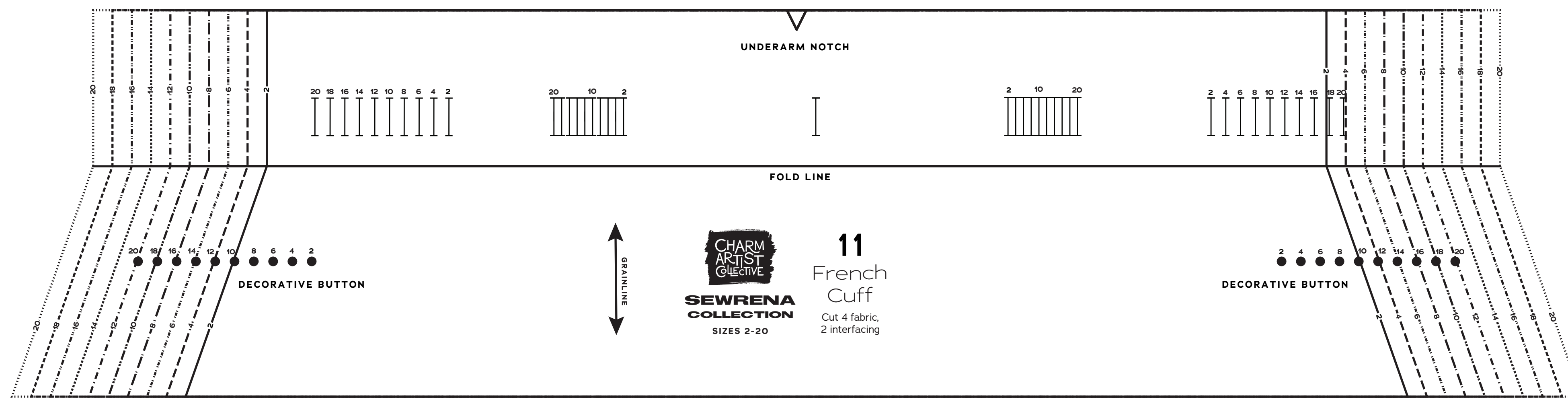
SIZES 2-20 PATTERN SIZE KEY

2
4
6
8
10
12
14
16
18
20

SYMBOL KEY

- grainline arrow
- match point/ placement mark
- buttonhole
- 1" test square

© 2020 Charm Patterns by Sarah. Distribution and Commercial Use Prohibited.



Sizes 2-20
 with cup sizes A-H

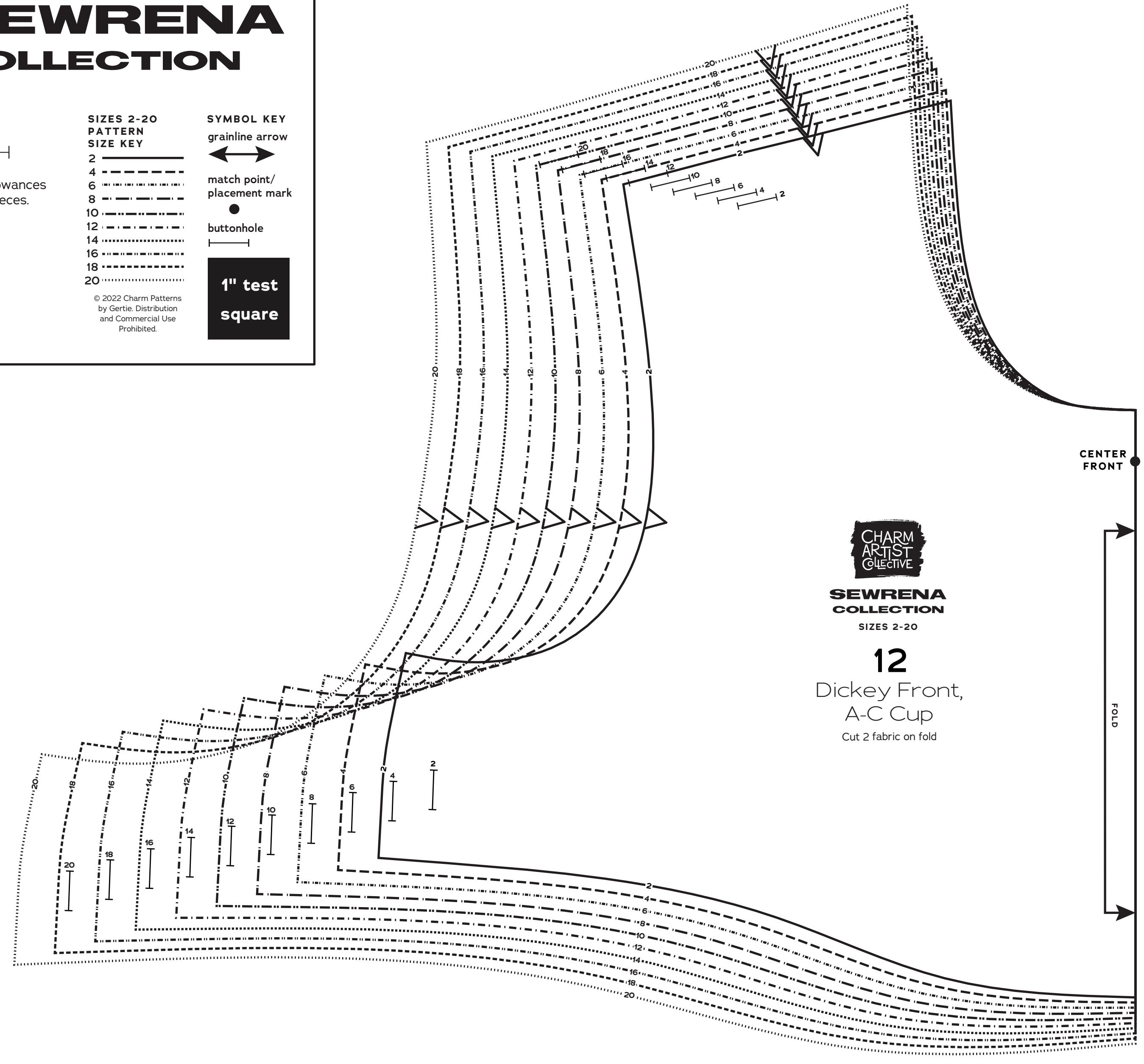
5/8 inch (1.5 cm) seam allowances are included on all pattern pieces.

PAGE 2 OF 3
PATTERN PIECE INDEX
 7 Petal Collar Back
 12 Dickey Front, A-C Cup
 12 Dickey Front, D/DD Cup
 12 Dickey Front, F/G Cup
 12 Dickey Front, H Cup
 13 Dickey Back

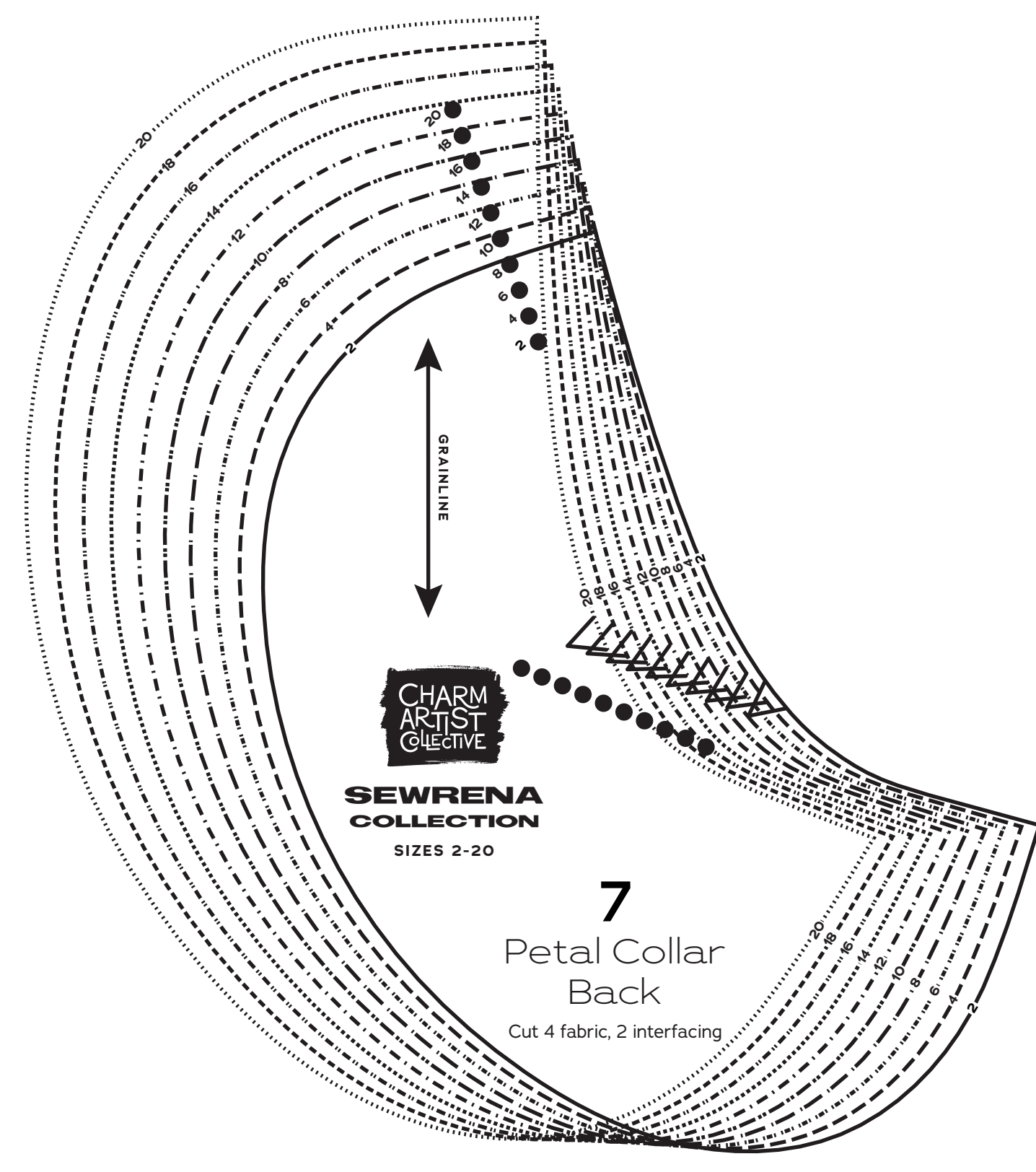
SIZES 2-20 PATTERN SIZE KEY

2	grainline arrow
4	match point/ placement mark
6	buttonhole
8	
10	
12	
14	
16	
18	
20	

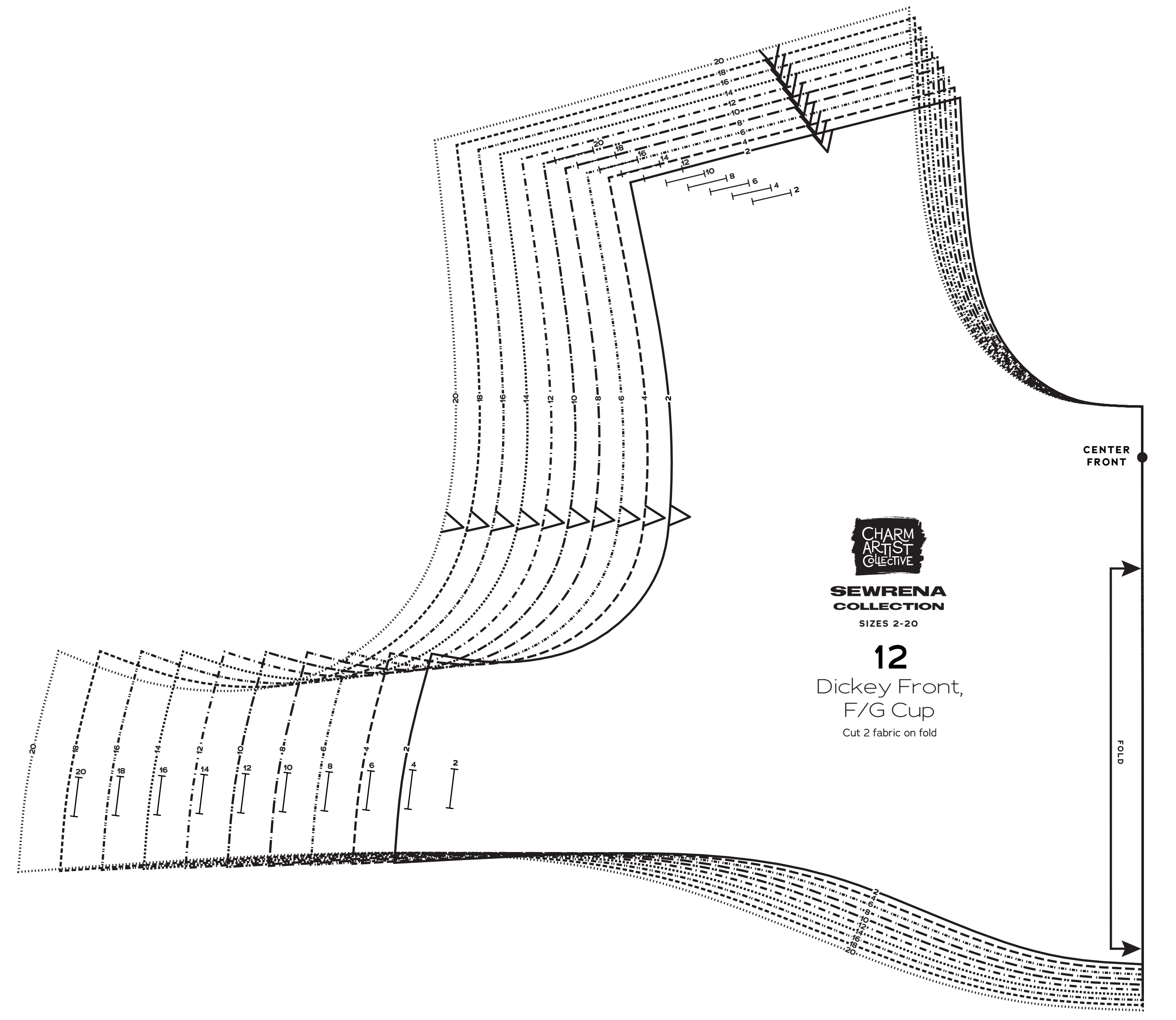
1" test square



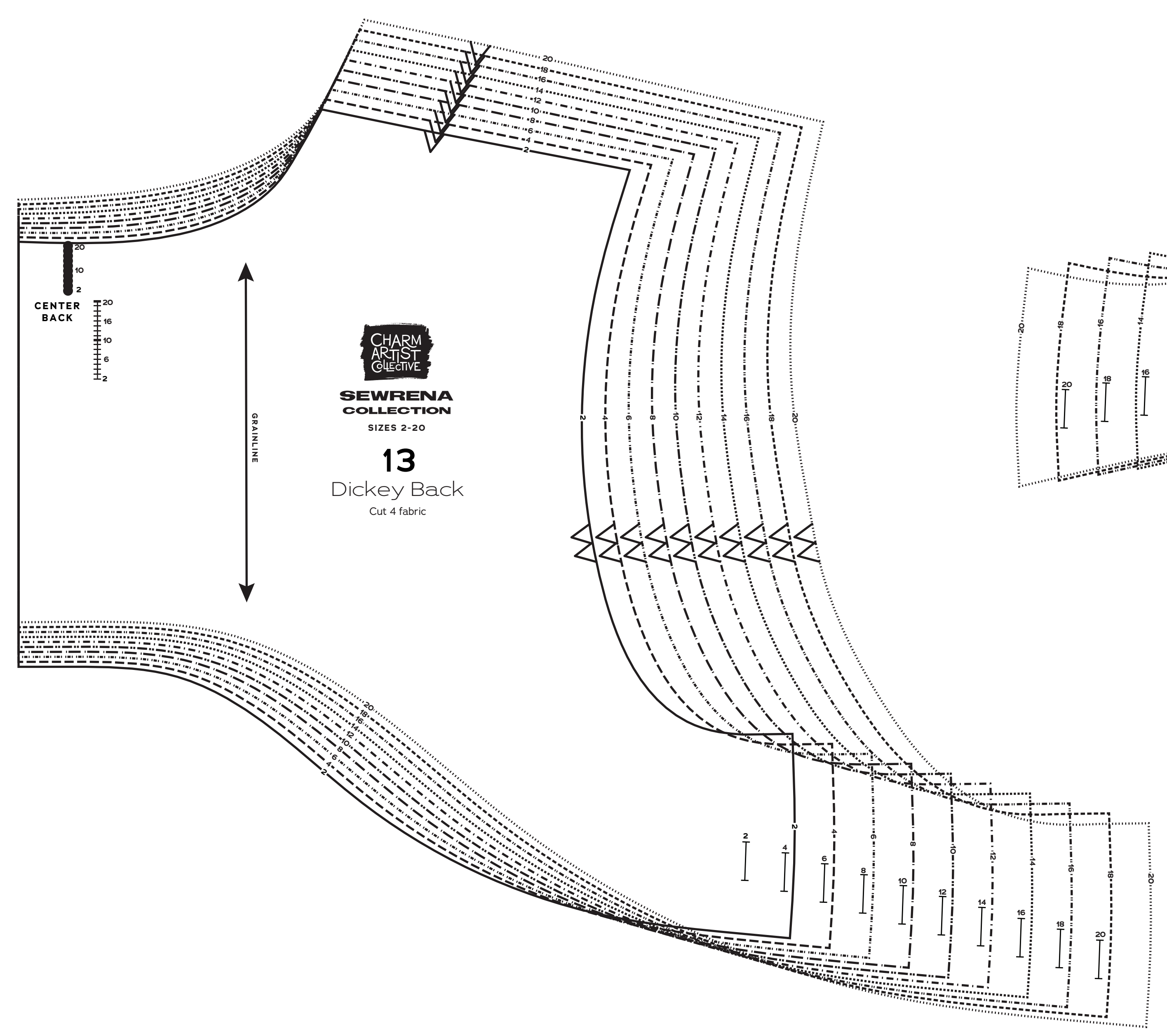
CHARM ARTIST COLLECTIVE
SEWRENA COLLECTION
 SIZES 2-20
12
 Dickey Front,
 A-C Cup
 Cut 2 fabric on fold



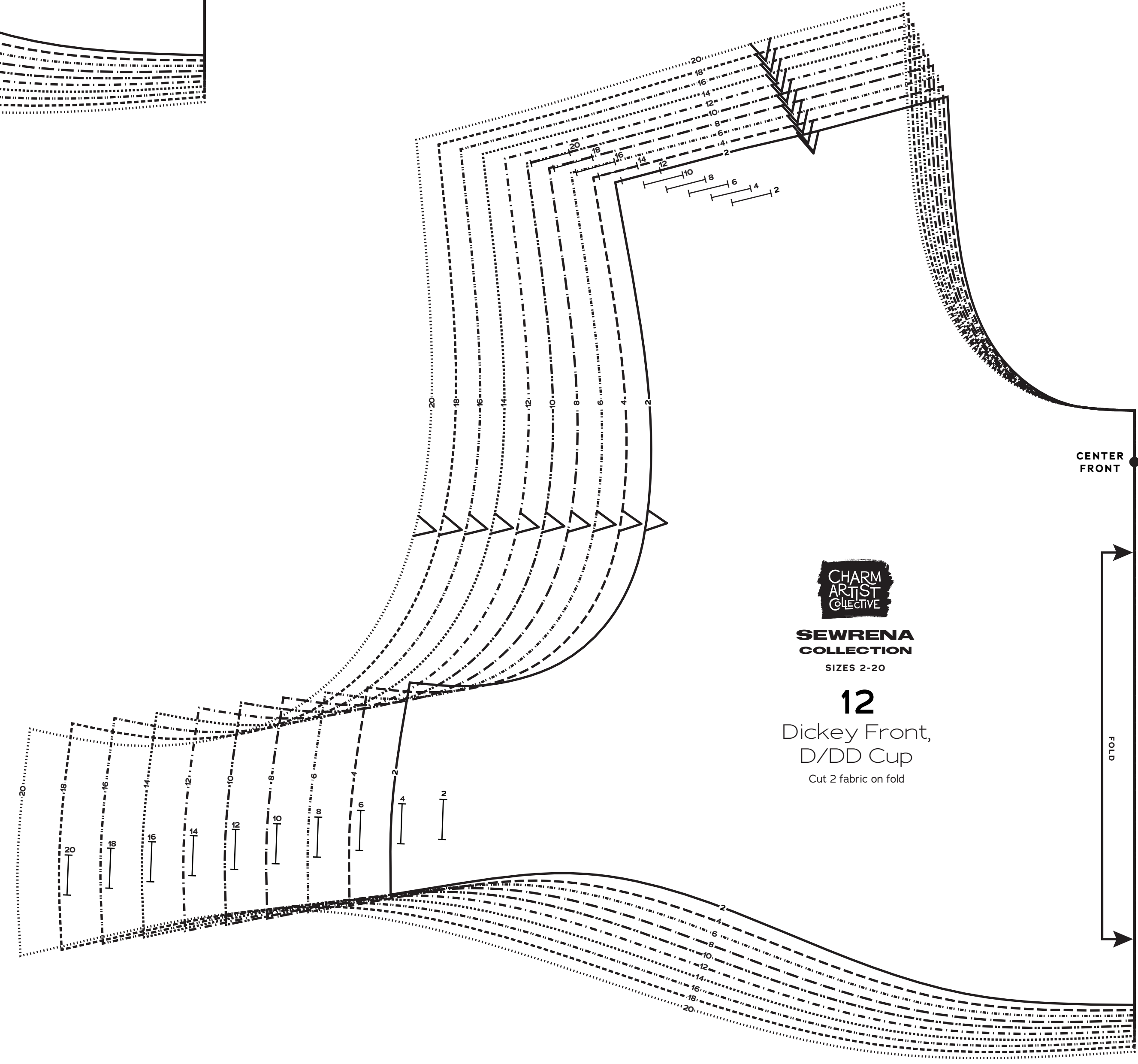
CHARM ARTIST COLLECTIVE
SEWRENA COLLECTION
 SIZES 2-20
7
 Petal Collar
 Back
 Cut 4 fabric, 2 interfacing



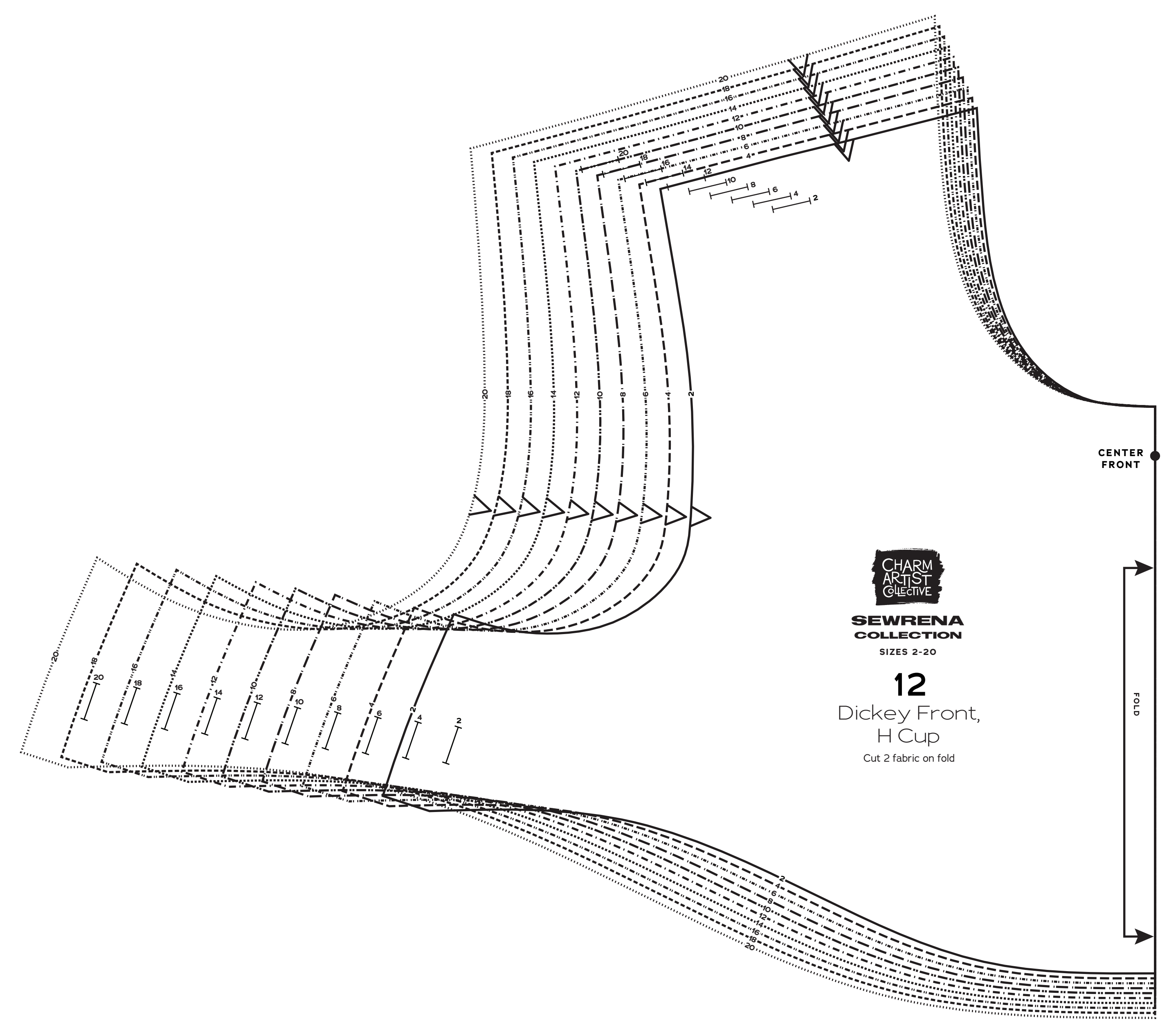
CHARM ARTIST COLLECTIVE
SEWRENA COLLECTION
 SIZES 2-20
12
 Dickey Front,
 F/G Cup
 Cut 2 fabric on fold



CHARM ARTIST COLLECTIVE
SEWRENA COLLECTION
 SIZES 2-20
13
 Dickey Back
 Cut 4 fabric



CHARM ARTIST COLLECTIVE
SEWRENA COLLECTION
 SIZES 2-20
12
 Dickey Front,
 D/DD Cup
 Cut 2 fabric on fold



CHARM ARTIST COLLECTIVE
SEWRENA COLLECTION
 SIZES 2-20
12
 Dickey Front,
 H Cup
 Cut 2 fabric on fold



SEWRENA COLLECTION

Sizes 2-20
with cup sizes A-H

5/8 inch (1.5 cm) seam allowances
are included on all pattern pieces.

PAGE 3 OF 3

PATTERN PIECE INDEX
All-in-One Facing Button
Placement Guides

SIZES 2-20
PATTERN
SIZE KEY

2 ————
4 - - - - -
6 - - - - -
8 - - - - -
10 - - - - -
12 - - - - -
14 - - - - -
16 - - - - -
18 - - - - -
20 - - - - -

SYMBOL KEY
grainline arrow
match point/
placement mark

● buttonhole
1" test
square

© 2020 Charm Patterns
by Serita. Distribution
and Commercial Use
Prohibited.

