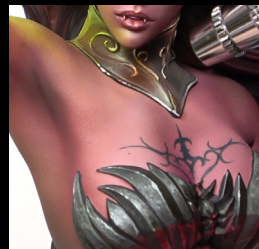




Sergio
CALVO
miniatures

ENGLISH


LADY SIBILLA



VOL V



SUMMARY

LADY SIBILLA	03
FREEHAND	03
AIRBRUSH	07
FINAL RETOUCHES	20
COLORS	29
GALLERY	30



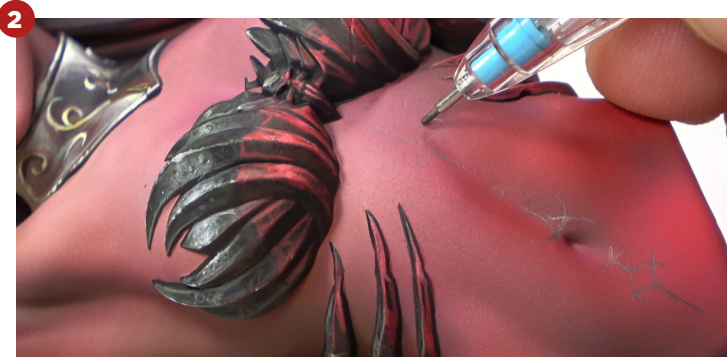
06 LADY SIBILLA

FREEHAND

06/91

In this new installment, we are going to apply new information to our thumbnail with freehand.

We can do a little trick before starting with the brush and that is to use a pencil or mechanical pencil to draw the pattern we want to make.





06 LADY SIBILLA



Water

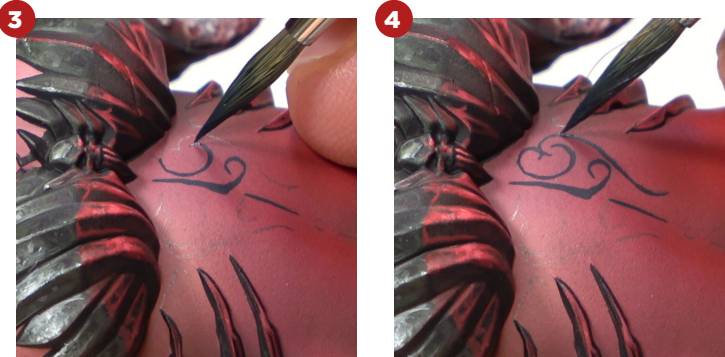
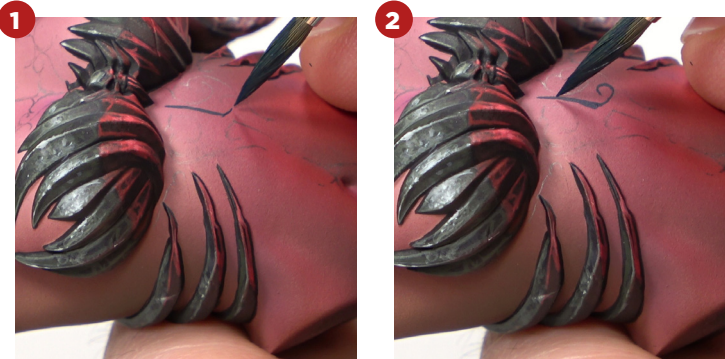
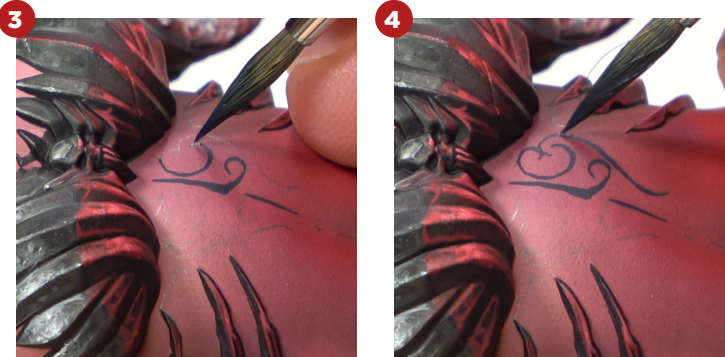
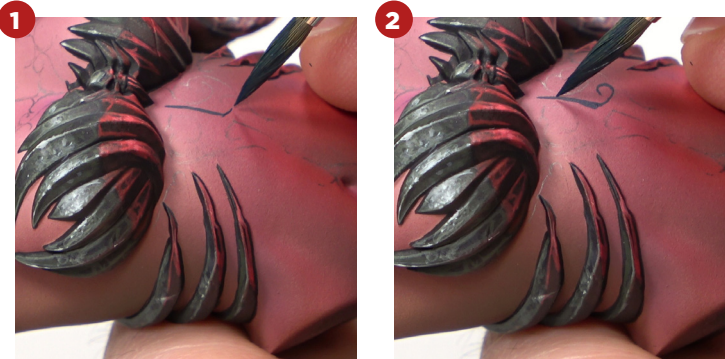


Strong Dark
Blue

FREEHAND

06/92

And once we have made this drawing as a template, we can start using the brush to adjust the design. It is always best to start with very thin lines and, if necessary, make them thicker. In my case, I asked a tattoo artist for help to make this freehand.





06 LADY SIBILLA



Water



Strong Dark
Blue



Russian Green

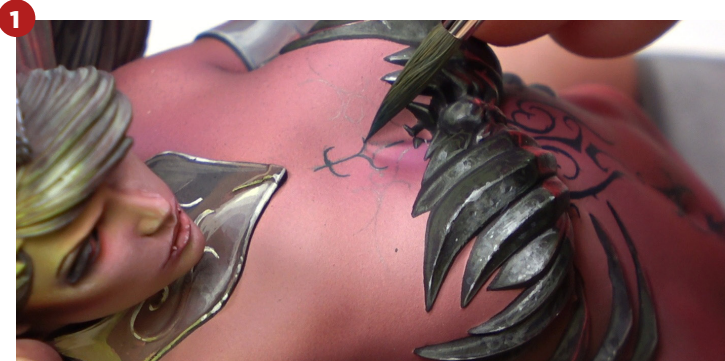


Aquoatic
Turquoise

FREEHAND

06/93

We can also vary the color in the upper part of the freehand to vary the intensity with which it is perceived on the skin. We should never use black directly for the tattoos; we should always turn this color towards a blue or green. (It will depend on the aged effect that we want to have.)



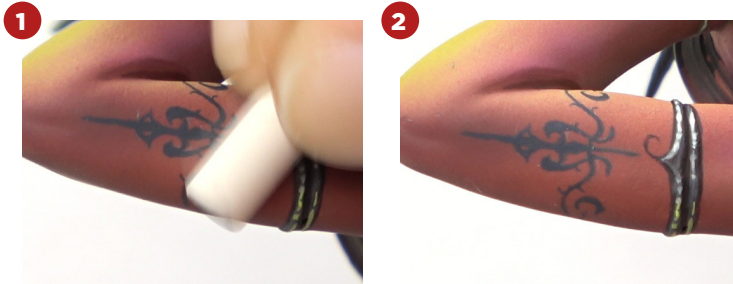


06 LADY SIBILLA

FREEHAND

06/94

And when we already have the tattoo done, we can eliminate the guides with an eraser.



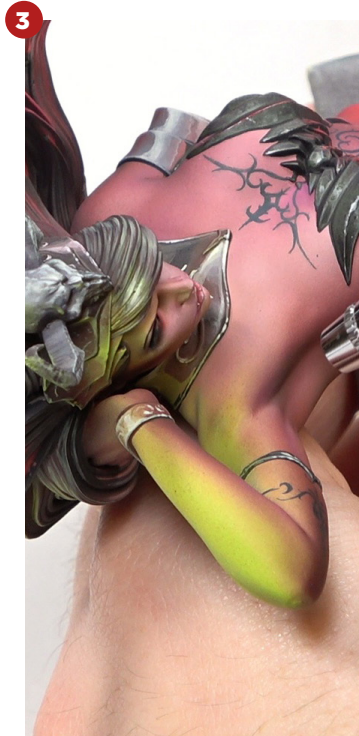
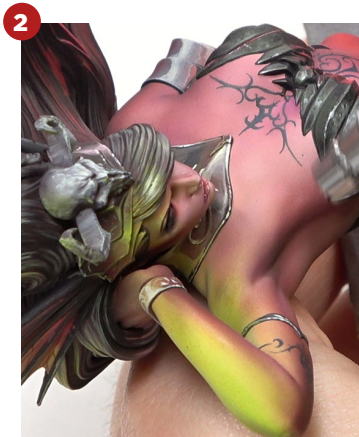


06 LADY SIBILLA

AIRBRUSH

06/95

Next, we will use the airbrush before we get to the final touches. We are going to give these last finishing touches with three or four colors to simply emphasize the effect that we have already created previously.





06 LADY SIBILLA



Water



Thinner



Light Livery
Green

AIRBRUSH _____ 06/95 **8**





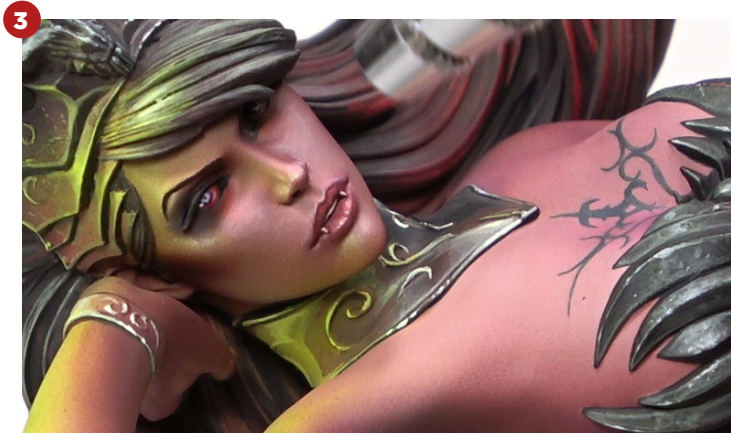
06 LADY SIBILLA



AIRBRUSH

06/96

We will integrate the two colors that we have used in the different lights with magenta.





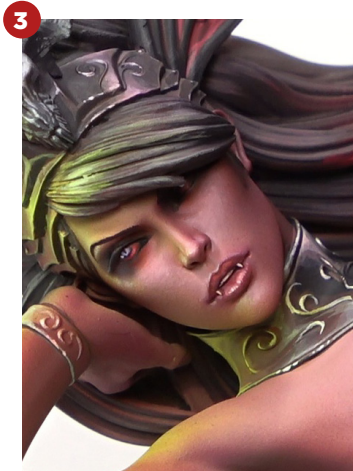
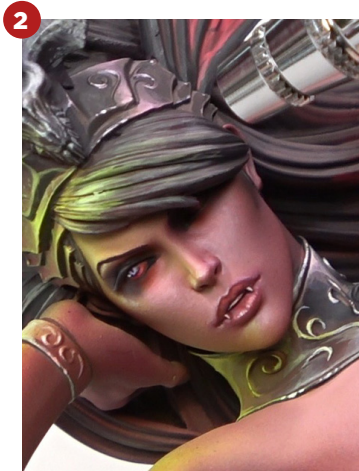
06 LADY SIBILLA



AIRBRUSH

06/97

And with the brown, we are going to integrate the hair itself since it is in contact with the previous colors; they are going to be grayed.





06 LADY SIBILLA



Water

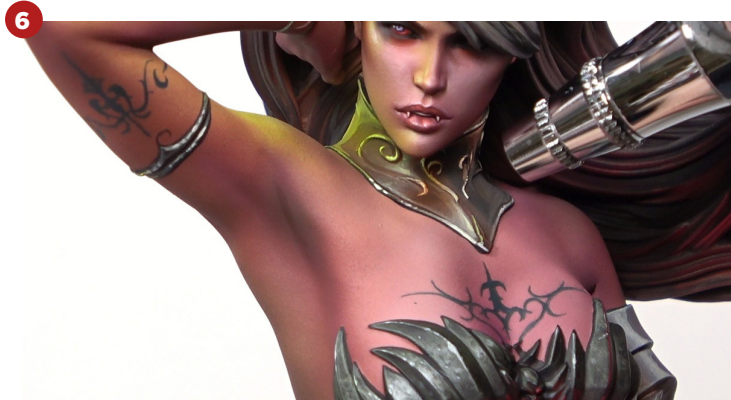


Thinner



Mahogany
Brown

AIRBRUSH _____ 06/97 **8**



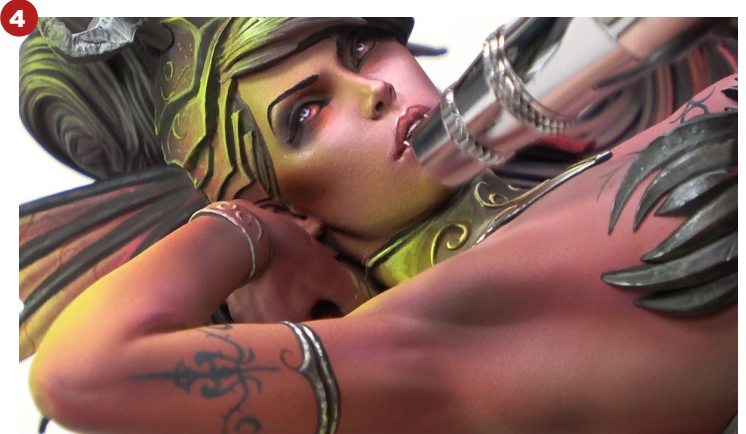
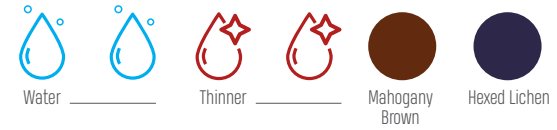
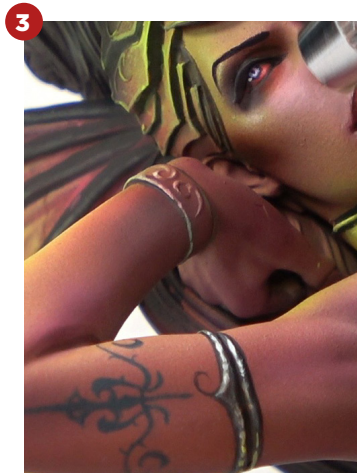
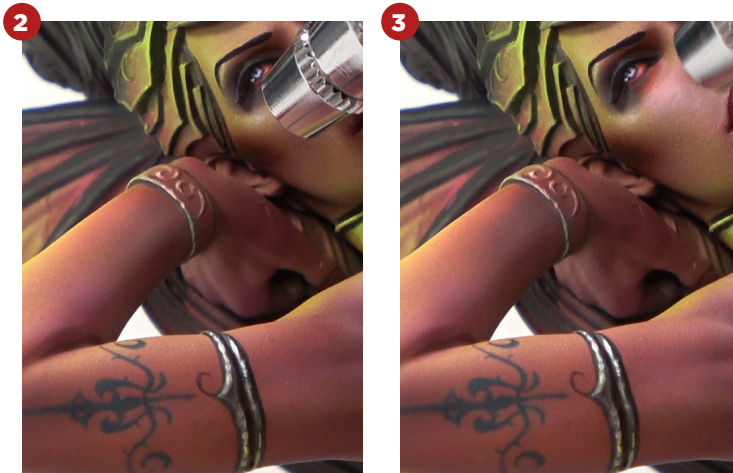


06 LADY SIBILLA

AIRBRUSH

06/98

And if we introduce a purple, we are going to deepen these shadows without becoming completely black.





06 LADY SIBILLA



Water



Thinner



Mahogany
Brown



Hexed Lichen



Black

AIRBRUSH

06/99

Although we can also introduce black into our mixture, we can simply use it in several points where the shadows have to be deeper and darker.

1



2



3



4



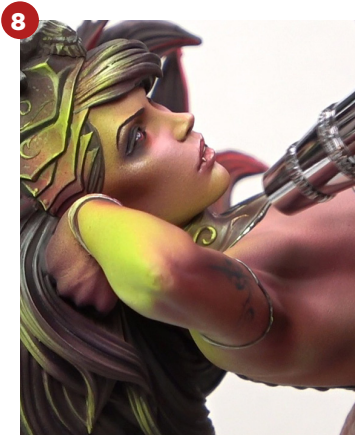
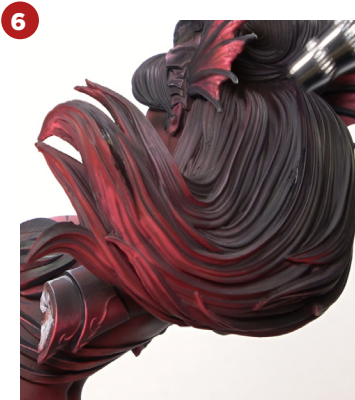
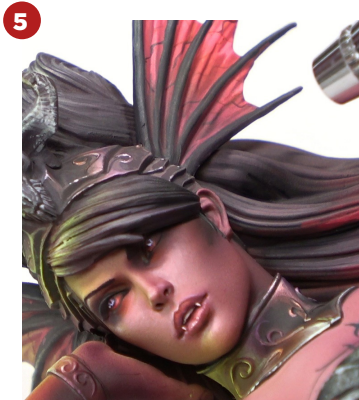


06 LADY SIBILLA



AIRBRUSH

06/99





06 LADY SIBILLA



Water



Thinner



Mahogany
Brown



Hexed Lichen



Black

AIRBRUSH _____ 06/99 ¹²

¹¹



¹²





06 LADY SIBILLA



Water



Thinner



Mahogany
Brown



Hexed Lichen



Black

AIRBRUSH _____ 06/99

13





06 LADY SIBILLA



AIRBRUSH 06/100 3

At the same time, we can introduce a powerful color like this red to filter those zones of the NMM where this same color is reflected.

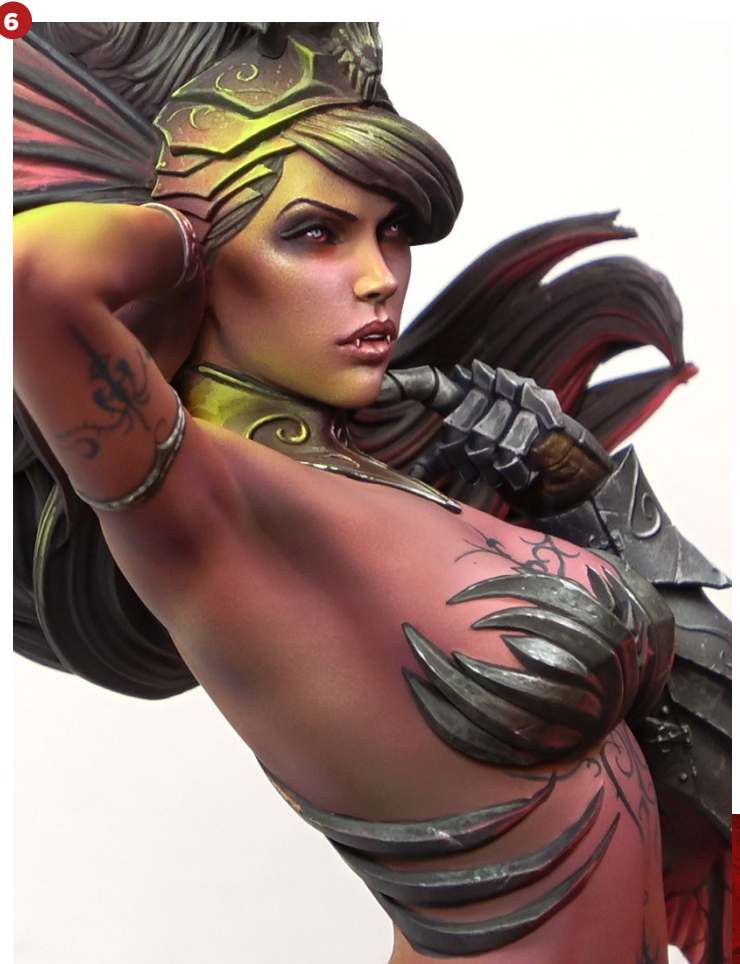




06 LADY SIBILLA



AIRBRUSH 06/100





06 LADY SIBILLA

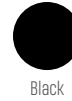


AIRBRUSH 06/100



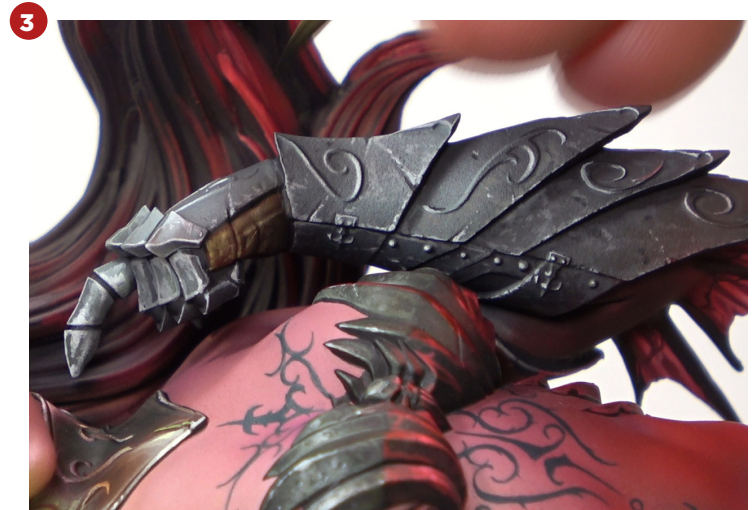


06 LADY SIBILLA



FINAL RETOUCHES_06/101 **2**

Again we return to the brush to finish off those zones of the NMM on the arm. The idea is to use this color to deepen the outlines in shadow.



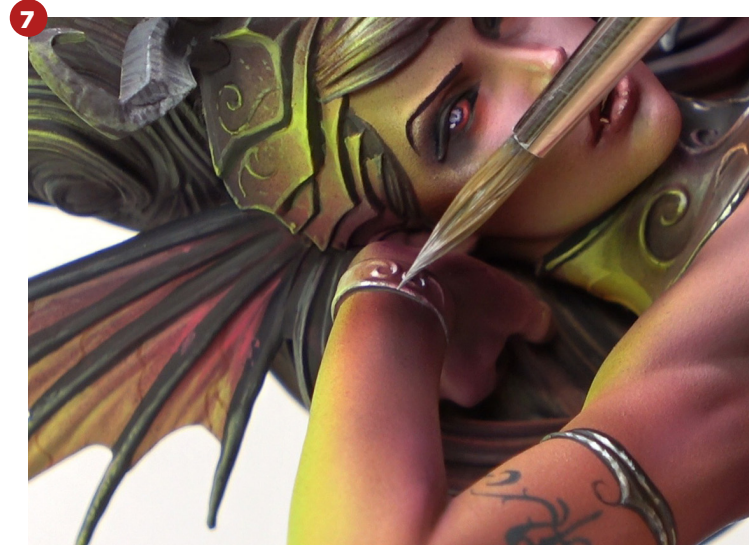
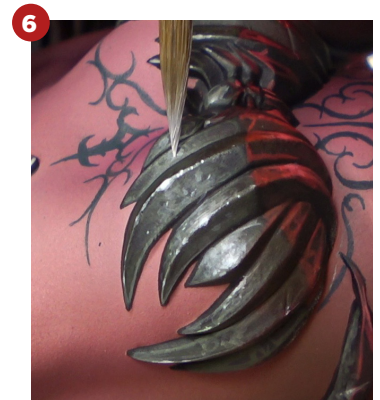
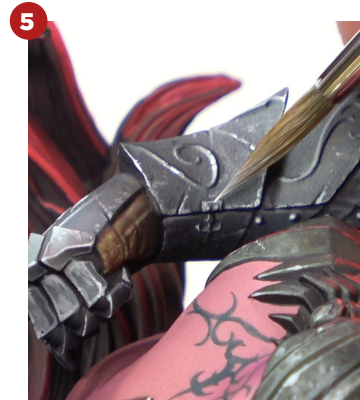
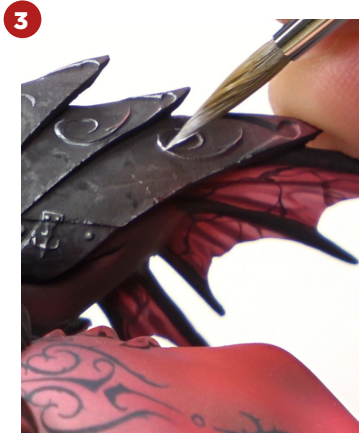


06 LADY SIBILLA



FINAL RETOUCHES 06/102

And with the white, we are going to adjust some of the outlines in light and create small glows on the surface.





06 LADY SIBILLA

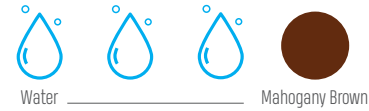


FINAL RETOUCHES 06/102





06 LADY SIBILLA



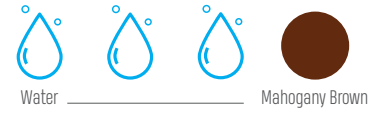
FINAL RETOUCHES 06/103

We create a worn effect through inks or using colors with glazes.





06 LADY SIBILLA

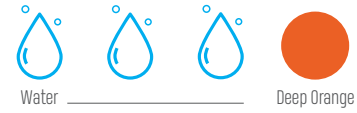


FINAL RETOUCHES 06/103



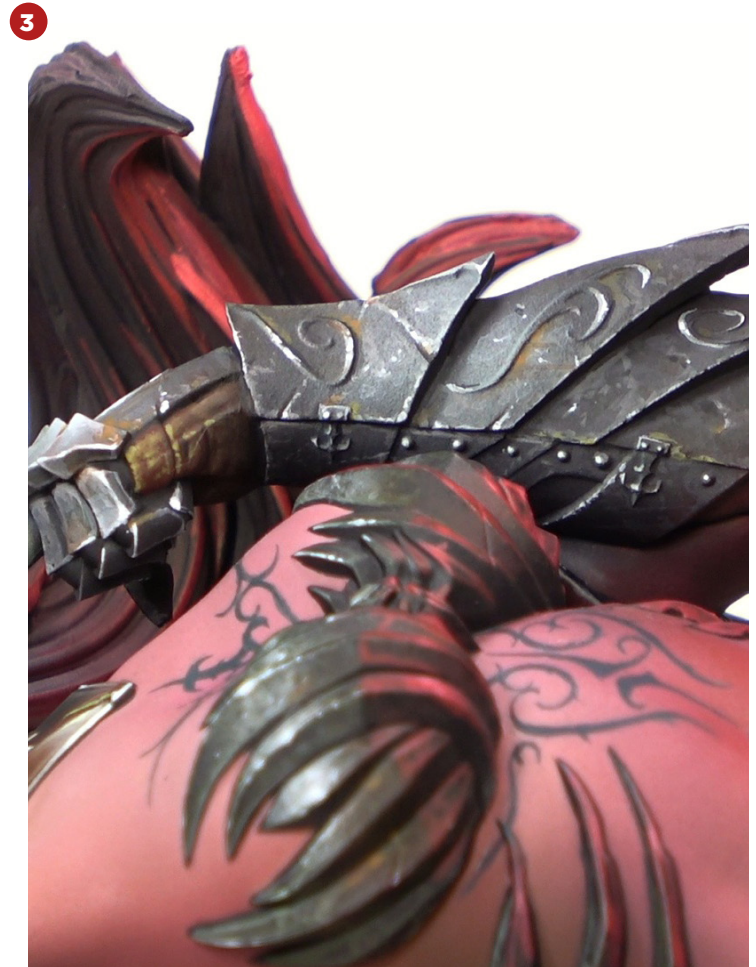


06 LADY SIBILLA



FINAL RETOUCHES 06/104

We do the same if we use an orange color as a rust.

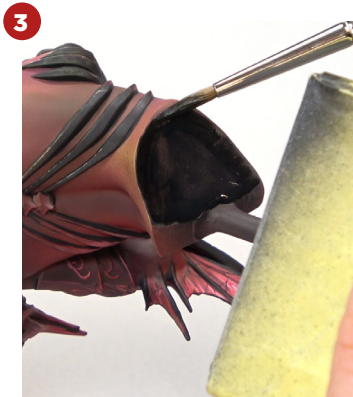
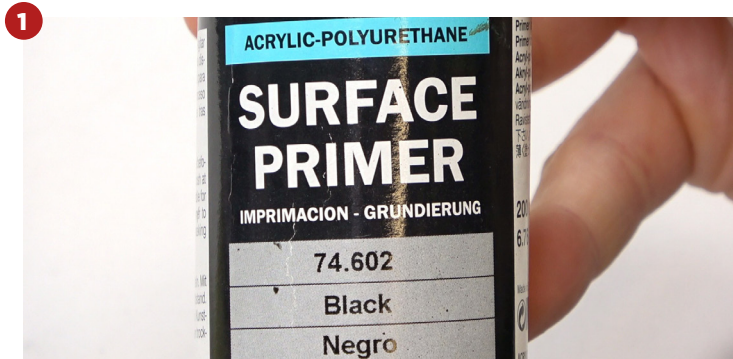




06 LADY SIBILLA

FINAL RETOUCHES 06/105 4

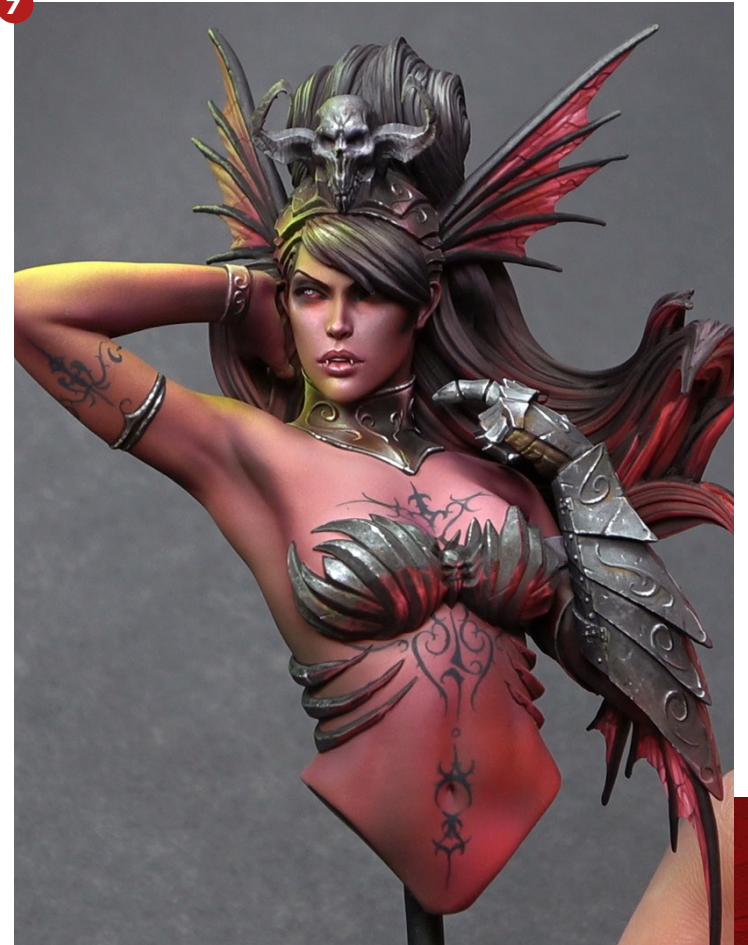
And finally, we can use this color to finish off the lower part of the bust. I hope you liked the tutorial, see you in the next one!





06 LADY SIBILLA

FINAL RETOUCHES 06/105





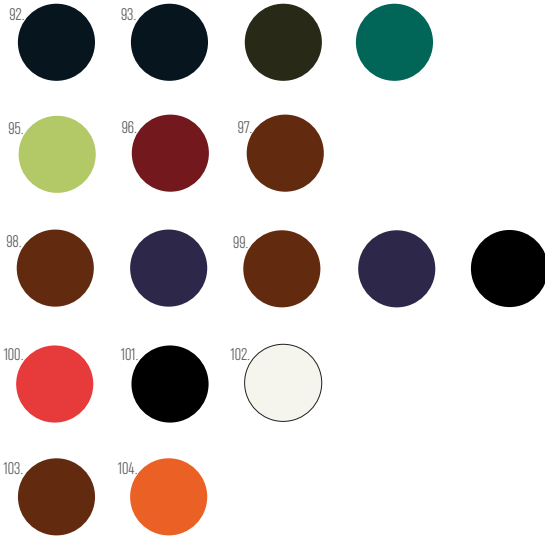
06 LADY SIBILLA

FINAL RETOUCHES_06/105





07 COLORS



- 92. Strong Dark Blue
- 93. Strong Dark Blue, Russian Green and Aquatic Turquoise
- 95. Light Livery Green
- 96. Quinacridone Magenta
- 97. Mahogany Brown
- 98. Mahogany Brown and Hexed Lichen
- 99. Mahogany Brown, Hexed Lichen and Black
- 100. Pyrrole Red
- 101. Black
- 102. White
- 103. Mahogany Brown
- 104. Deep Orange





08 GALLERY





08 GALLERY





08 GALLERY





08 GALLERY





08 GALLERY





Sergio
CALVO
miniatures

LADY SIBILLA

VOL V

CREDITS

Paint
Sergio Calvo

Edition and Correction
Vanessa Sáez y Marta Torres

Design and Layout
Antonio García

Translation
Garin Liu



sergiocalvominiatures.com



patreon.com/sergiocalvominiatures



[instagram.com/sergiocalvominiatures](https://www.instagram.com/sergiocalvominiatures)



www.facebook.com/sergiocalvominiatures