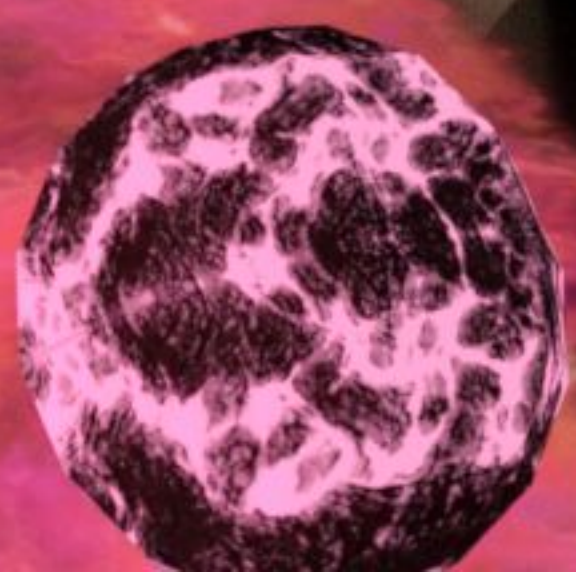
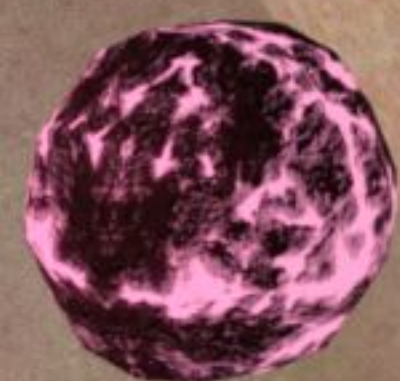






SHIFT

SHIFT



SWELL



BULGE

SHRINK

BLOAT



GROW



CRACK

SHIFT



SWOOP



GLAMOUR UP

SKVELL





THERE WE GO.

HOLY FUCK...



THAT WAS INSANE.



LOOK AT THESE TITS.



I LOOK
LIKE A PORN
STARS WET
DREAM.

A 3D rendered female character with long, wavy purple hair and a shaved side. She is looking down and to the left with a serious expression. A pink speech bubble is positioned to her left, containing the text "IT IS WHAT YOU WANTED, RIGHT?". The background is a plain, light-colored wall.

IT IS WHAT YOU WANTED, RIGHT?



WELL, KINDA?
I'M NOT GONNA SAY
NO OR NOTHING, BUT IT
WAS A TAD
OVERWHELMING.



I ALSO
FEEL SUPER HORNY
RIGHT NOW.

NOT SURE IF
THAT IS DUE TO
CONTACT WITH THE
SEED CREATURE, OR A
SIDE EFFECT OF MY
SUPER SENSITIVE
JUMBO TITS.



SUPPOSEDLY,
THIS FORM SHOULD
ATTRACT A SEXUAL
PARTNER IN NO
TIME.


HUGE
MAMMARY GLANDS
HAVE A STATISTICAL
ADVANTAGE TO MAKE
MEN MORE WILLING
TO MATE.





YOU TALK STRANGE, YOU KNOW THAT?

ANYWAYS, WHAT HAPPENED TO YOUR BREASTS? YOU'RE FLAT AS A PANCAKE.



PECTORAL
SHAPE OF THIS FORM
IS RELATED TO THE
AMOUNT OF VIRILE
ENERGY STORED.



IT IS
REQUIRED THAT
STORAGE IS
REPLENISHED.

WITHOUT A RESUPPLY,
NO MORE SUPERNATURAL
FEATS CAN BE
ACCOMPLISHED.



SO WE BOTH
NEED A MAN, IS
WHAT YOU'RE
SAYING?

A close-up photograph of a woman's midsection. She is wearing black leggings. Her skin is fair and appears smooth. A speech bubble is overlaid on the image, containing the text "LET'S SEE WHAT WE CAN DO." in a bold, black, sans-serif font. The background is a light-colored, textured surface, possibly concrete or stone.

**LET'S SEE WHAT
WE CAN DO.**

A 3D rendered woman with long, wavy red hair and large breasts is shown from the chest up. She is holding a black smartphone to her ear with her right hand, which has bright pink nail polish. She has a slight smile and is looking towards the camera. The background is a plain, light-colored wall. A speech bubble is positioned near her head.

**ANY SEX CLUBS
AROUND HERE?**




THERE'S
BOUND TO BE
SOMETHING.




**STUPID
SEARCH FILTERS
MAKING IT DIFFICULT TO
FIND ACTUAL PORN
MEDIA.**



THERE WE GO.
AN ADULT MEETING
PLACE, A FEW BLOCKS
AWAY FROM HERE.

A close-up, profile view of a woman's face. She has vibrant pink hair and striking blue eyes. Her expression is neutral, looking slightly to the right. A speech bubble is positioned on the left side of her face, containing text. The background is a plain, light-colored wall.

**CONVENIENT.
THAT SHOULD
REPLENISH ENERGY,
AND SATISFY YOUR
NEEDS.**



I SUPPOSE THAT
SUPER RUNNING YOU DID
BEFORE IS OUT OF THE
QUESTION?

INDEED.



WELL, LET'S
WALK THEN.

WHILE WE DO,
YOU CAN EXPLAIN TO
ME WHY AND HOW ALL
THIS BIZARRE STUFF IS
GOING ON RIGHT
NOW.