

**A SHORT
TIME LATER,
OUTSIDE THE
BUILDING.**

**OKAY, MAX,
GET IT TOGETHER.
YOU GOTTA LEARN TO
GO OUTSIDE
EVENTUALLY, SO GET
A GRIP.**





GOOD EVENING,
MISS BOBBS.



**MISS BOBBS?
HE THINKS I'M... HER?
WHY WOULD SHE NOT
TELL HIM?**

A close-up photograph of a person's hand and torso. The person is wearing a dark, possibly black or dark grey, suit jacket and matching trousers. The hand is visible on the left side of the frame, with fingers slightly curled. A white speech bubble with a black outline is positioned near the hand, containing a crude joke. The background is dark and out of focus.

MY GOD,
HE'S A BIG BOY.
I WONDER IF HE'S
PACKING DOWN THERE
AS WELL.



SHIT, MY
THOUGHTS ABOUT
MEN GO RIGHT DOWN
THERE?

HOW AM
I GONNA MAKE IT
TROUGH THE
EVENING?



YOUR RIDE, MISS.

THA... THANK YOU. YES.



WAIT.
DON'T TELL ME HE'S
GONNA JOIN ME IN
THE CABIN?



SHIT. HE IS.

DRIVER. TO THE CINEMA.


RIGHT AWAY, MISTER RUSS.



**RUSS.
AT LEAST I
KNOW HIS NAME
NOW. BUT HOLY
FUUCK...**

...MY
NETHER IS
PULSING LIKE
CRAZY, LOOKING
AT HIM.



A close-up, high-angle shot of a woman's face, looking slightly to the left. She has light blue eyes, dark eye makeup, and dark lipstick. Her hair is blonde and styled. A speech bubble is positioned to the left of her face, connected by a dotted line. The background is a plain, light-colored wall.

I'M GONNA
EXPLODE IF I NEED
TO SPEND TOO MUCH
TIME WITH HIM.
HOPEFULLY...



HOW LONG IS
THE DRIVE,
RUSS?

IT'LL BE A
WHILE, BUT NOT
TOO MUCH. ABOUT
FIFTY MINUTES,
DEPENDING ON
TRAFFIC.



FUCK!!!!

FIFTY MINUTES?
ARE YOU FUCKING
KIDDING ME?

BA-BLANN
BA-BLANN
BA-BLANN

MY BODY CAN
HARDLY STAND FIVE
MINUTES. IT'S ACHING ALL
OVER ALREADY.

SHUT UP!!!



MISS? I DIDN'T SAY ANYTHING.

I WASN'T TALKING TO YOU.

DRIVER.
FIND US A GAS
STATION, OR
SOME OTHER
PLACE WE CAN
MAKE A SHORT
STOP.

YES, MISS.





NO, I'M NOT.
BUT I WILL BE IN A BIT.
HOW MUCH EXTRA TIME
UNTIL THE FILM
STARTS?

MISS? ARE YOU
OKAY?

ABOUT TWO
HOURS.

EXCELLENT,
THAT'S PLENTY OF
TIME.

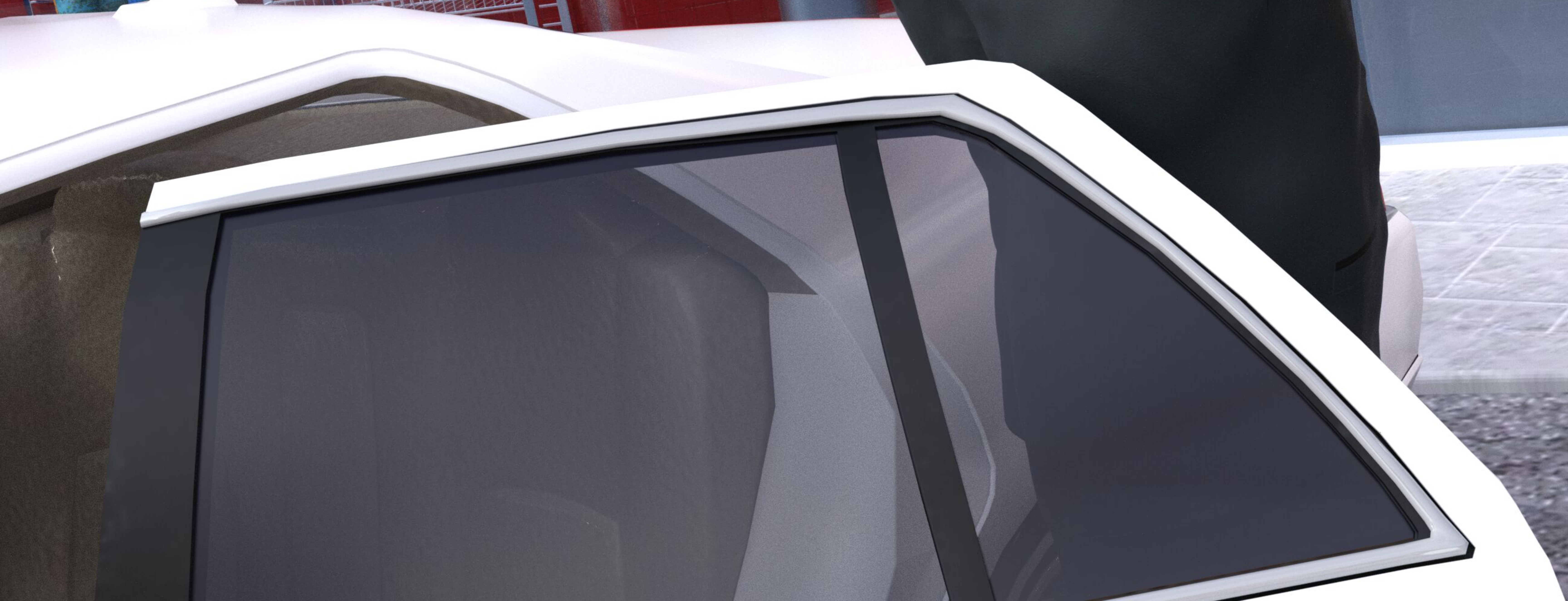
At a gas station.

Bituka3d Shop PRICES	
Classic Tee	5.29
Dress	8.00
Dark-colored Shirt	6.00
Polo	7.49
Shorts	8.99
Pants	12.99

Bituka3d Shop MENU	
Potato Chips	3.49
Hotdog/stick	1.00
Hotdog(buns)	1.29
Cup Noodles	2.49
Coffee	2.99
Bottled Water	1.45
Soda in Can	1.99
Ice cream/pint	7.49
Ice cream/scoop	1.00

Bituka3d Shop MENU	
Potato Chips	3.49
Hotdog/stick	1.00
Hotdog(buns)	1.29
Cup Noodles	2.49
Coffee	2.99
Bottled Water	1.45
Soda in Can	1.99
Ice cream/pint	7.49
Ice cream/scoop	1.00

RUSS, WITH ME!



MEAT
Potato Chips 3.49
Hotdog/stick 1.00
Hotdog(buns) 1.29
Cup Noodles 2.49
Coffee 2.99
Bottled Water 1.45
Soda in Can 1.99
Ice cream/pint 7.49
Ice cream/scoop 1.00

Dress 6.00
Dark-colored Shirt 7.49
Polo 8.99
Shorts 12.99
Pants

Conc...
Bottled Water 1.99
Soda in Can 7.49
Ice cream/scoop 1.00

GREETINGS.
WHERE ARE YOUR
RESTROOMS?

RIGHT THIS WAY,
MISSES.



A woman with blonde hair, wearing a black corset, fishnet stockings, and black gloves, stands in a dilapidated room. She is looking towards a window. The room has a tiled floor with a large bloodstain, a toilet, and a roll of paper. A large, light-colored door is on the right. Three speech bubbles are overlaid on the image.

WHAT A DUMP.
BUT IT'LL DO.

I SHALL WAIT
HERE, MISS.

NO,
COME IN WITH ME,
RUSS!

WHAT IS UP, MISS?
DO YOU NEED HELP
WITH ANYTHING?

YOU BET I
NEED HELP.



NOW, DROP
THOSE PANTS,
AND SHOVE YOUR
COCK INTO MY
PUSSY!



WAIT, MISS, ARE YOU FOR REAL? YOU WANT WHAT?



A close-up, cinematic shot of a woman's face. She has short, wavy, light brown hair and is looking directly at the camera with a serious, intense expression. Her eyes are a striking light blue, and she is wearing dark, smoky eye makeup. Her lips are painted a dark, glossy red. The background is a dark, textured wall, possibly made of stone or concrete, with some red splatters or bloodstains visible in the lower right corner. A white speech bubble with a black border is positioned to the right of her face, containing the text "DO I REALLY NEED TO REPEAT MYSELF?".

DO I REALLY
NEED TO REPEAT
MYSELF?



DO YOU HAVE
A PENIS?

YES, BUT...

ARE YOU GAY?

DO YOU THINK
I'M SEXY?

NO, BUT...

YES, BUT...



THERE WE GO.
ALL NEEDS MET.

I SAY 'FUCK ME',
AND YOU ASK 'HOW
HARD'? YOU GOT
THAT?

YES, MISS.



THAT'S A
GOOD BOY.
NOW, FUCK
ME.

HOW HARD?



RIP MY
PUSSY APART.

JACKPOT.
THIS SHOULD LAST
ME THROUGH THE
NIGHT.

to be continued