



GO



Save



**ROAD TO COMPLETION**  
**FINAL FANTASY X**  
**HD REMASTER**

**39**

GO INTO THE NEXT ROOM, THEN  
COME BACK TO THE HALLWAY





GO

## DARK \* YOJIMBO 01

Tidus: Yuna

**Yuna:** Grand Summon Yojimbo

Pay 70000 / Zanmato

*Load previous save if the amount doesn't work and try again*

*Load previous save if Yojimbo does an auto-attack*

*Use the Save Sphere to heal after the fight*



## REWARDS

## SPHERE LEVEL CHECK IN

Auron:

Kimahri:

Lulu:

Rikku:

Tidus:

Wakka:

Yuna:

HELP

Set battle formation.

Bieber	HP MP	9999 / 9999 999 / 999	S.Lv 40
▶ Yuna	HP MP	9999 / 9999 999 / 999	S.Lv 85
Rikku	HP MP	9999 / 9999 999 / 999	S.Lv 97
Lulu	HP MP	9999 / 9999 999 / 999	S.Lv 1
Auron	HP MP	9999 / 9999 999 / 999	S.Lv 54
Kimahri	HP MP	9999 / 9999 999 / 999	S.Lv 23
Wakka	HP MP	9999 / 9999 999 / 999	S.Lv 89

54 37

1838446 gil

Location

Cavern of the Stolen Fayth

Sphere Grid

Items

Abilities

Overdrive

Equip

Status

Aeons

▶ Formation

Customize

Config

Help

HELP

Change equipment.

Tidus

HP 9999 / 9999  
MP 999 / 999

S.Lv

40

Next

8483 AP



OVERDRIVE

Mode

Stoic

Weapon

Caladbolg

Armor

Sanctuary

Equipment

Abilities

Break Damage Limit

Triple Overdrive

Evade & Counter

Magic Counter





GO



GO



GO

## DARK \* YOJIMBO 02

**Rikku:** MIX Healing Spring x2

**Tidus/Yuna:** Swap Weapon/Current Weapon

**Rikku/Tidus:** Quick Hit

**Yuna:** Swap Weapon/Summon

*Have Yuna summon an Aeon just before the enemy attacks so they can deal/absorb damage*

Valefor / Sonic Wings (20K)

Ifrit / Meteor Strike (45K)

Ixion / Aerospark (40K)

Shiva / Heavenly Strike (40K)

Bahamut / Impulse (45K)

Anima / Pain (100K)

Magus Sisters

Cindy / Help each other

Sandy / Fight

Mindy / Fight



## REWARDS

## SPHERE LEVEL CHECK IN

**Auron:**

**Kimahri:**

**Lulu:**

**Rikku:**

**Tidus:**

**Wakka:**

**Yuna:**

GO





GO



TOUCH BUT DON'T SAVE



GO





GO



GO

## DARK \* YOJIMBO 03

**Rikku/Yuna:** Swap Weapon/Current Weapon

**Tidus:** Entrust Rikku

**Rikku:** MIX Healing Spring x2

**Rikku/Tidus:** Quick Hit

**Yuna:** Swap Weapon/Summon

*Have Yuna summon an Aeon just before the enemy attacks so they can deal/absorb damage*

Valefor / Sonic Wings (20K)

Ifrit / Meteor Strike (45K)

Ixion / Aerospark (40K)

Shiva / Heavenly Strike (40K)

Bahamut / Impulse (45K)

Anima / Pain (100K)

Magus Sisters

Cindy / Help each other

Sandy / Fight

Mindy / Fight



## REWARDS

## SPHERE LEVEL CHECK IN

Auron:

Kimahri:

Lulu:

Rikku:

Tidus:

Wakka:

Yuna:



GO

GO



A character with blonde hair, wearing a yellow and white top, dark shorts, and a red bag, stands in the center of a dark, rocky cave. The cave walls are covered in blue and green moss. A glowing pink and purple light emanates from the cave's entrance in the distance. A white box with the word 'GO' is positioned above the character.

GO



GO



TOUCH BUT DON'T SAVE



HELP

Set battle formation.

 Wakka	HP 9999 / 9999 MP 999 / 999	S.Lv 99
Yuna	HP 9999 / 9999 MP 999 / 999	S.Lv 99
Rikku	HP 9999 / 9999 MP 999 / 999	S.Lv 99
Lulu	HP 9999 / 9999 MP 999 / 999	S.Lv 20
Auron	HP 9999 / 9999 MP 999 / 999	S.Lv 65
Kimahri	HP 9999 / 9999 MP 999 / 999	S.Lv 74
Tidus	HP 9999 / 9999 MP 999 / 999	S.Lv 48

134:31

2529929 gil

Location

Cavern of the Stolen Fayth

Sphere Grid

Items

Abilities

Overdrive

Equip

Status

Aeons

 Formation

Customize

Config

Help

HELP

Change equipment.

Wakka

HP 9999 / 9999  
MP 999 / 999

S.Lv

99

Next

22000 AP



OVERDRIVE

Mode

Comrade

Weapon

Breakaway

Armor

Miracle Comeback

Equipment

Abilities

⊕ HP +5%

⊕ Auto-Haste

⊕ Auto-Phoenix

⊕ Stoneproof



GO



GO



GO

## DARK \* YOJIMBO 04

**Wakka:** Entrust Rikku

**Rikku/Yuna:** Swap Weapon/Current Weapon

**Wakka:** Tidus

**Tidus:** Swap Weapon/Current Weapon

**Rikku:** MIX Healing Spring x2

**Rikku/Tidus:** Quick Hit

**Yuna:** Swap Weapon/Summon

*Have Yuna summon an Aeon just before the enemy attacks so they can deal/absorb damage*

Valefor / Sonic Wings (20K)

Ifrit / Meteor Strike (45K)

Ixion / Aerospark (40K)

Shiva / Heavenly Strike (40K)

Bahamut / Impulse (45K)

Anima / Pain (100K)

Magus Sisters

Cindy / Help each other

Sandy / Fight

Mindy / Fight



## REWARDS

## SPHERE LEVEL CHECK IN

**Auron:**

**Kimahri:**

**Lulu:**

**Rikku:**

**Tidus:**

**Wakka:**

**Yuna:**

HELP

Set battle formation.

 Kimahri	HP 9999 / 9999 MP 999 / 999	S.Lv 74
Yuna	HP 9999 / 9999 MP 999 / 999	S.Lv 99
Rikku	HP 9999 / 9999 MP 711 / 999	S.Lv 99
Lulu	HP 9999 / 9999 MP 999 / 999	S.Lv 20
Tidus	HP 9999 / 9999 MP 603 / 999	S.Lv 48
Auron	HP 9999 / 9999 MP 999 / 999	S.Lv 65
Wakka	HP 9999 / 9999 MP 991 / 999	S.Lv 99

135 27

2529929 gil

Location

Cavern of the Stolen Fayth

Sphere Grid

Items

Abilities

Overdrive

Equip

Status

Aeons

 Formation

Customize

Config

Help

A character with blonde hair, wearing a colorful tunic and dark shorts, stands in the center of a dimly lit cave. The cave walls are covered in dark, textured rock formations. In the background, there are some glowing green and blue lights. A white box with the word "GO" in blue text is positioned above the character.

GO



GO





GO



TOUCH BUT DON'T SAVE



GO



GO



GO



GO



GO



## DARK \* YOJIMBO 05

**Kimahri:** Entrust Rikku

**Rikku/Yuna:** Quick Hit/Swap Weapon

**Kimahri:** Tidus

**Tidus/Yuna:** Swap Weapon/Current Weapon

**Rikku:** MIX Healing Spring x2

**Rikku/Tidus:** Quick Hit

**Yuna:** Swap Weapon/Summon

*Have Yuna summon an Aeon just before the enemy attacks so they can deal/absorb damage*

*Valefor / Sonic Wings (20K)*

*Ifrit / Meteor Strike (45K)*

*Ixion / Aerospark (40K)*

*Shiva / Heavenly Strike (40K)*

*Bahamut / Impulse (45K)*

*Anima / Pain (100K)*

*Magus Sisters*

*Cindy / Help each other*

*Sandy / Fight*

*Mindy / Fight*



## REWARDS

## SPHERE LEVEL CHECK IN

**Auron:**

**Kimahri:**

**Lulu:**

**Rikku:**

**Tidus:**

**Wakka:**

**Yuna:**

HELP

Select destination.

Djose Highroad

Mi'ihen Highroad

Mi'ihen Ruins

Mushroom Rock

Battle Site

Djose Highroad

Moonflow

Guadosalam

Thunder Plains

Lake Macalania

Bikanel Island

Sanubia Sands

Highbridge

Calm Lands

Omega Ruins

Mt. Gagazet

OSOZE



ENDROND

GO



## ORIGINAL - TH'UBAN

Party: Attack

Build up Overdrives

Tidus

Yuna

Rikku



## REWARDS

## SPHERE LEVEL CHECK IN

Auron:

Kimahri:

Lulu:

Rikku:

Tidus:

Wakka:

Yuna:



Save

HELP

New location.

Calm Lands

Penance

Sin

Baaj Temple

Besaid Island

Besaid Ruins 1

Besaid Ruins 2

Besaid Falls

Kilika Port

Luca

Mi'ihen Highroad

Mi'ihen Ruins

Mushroom Rock

Battle Site

Djose Highroad

Moonflow

NEW

NEW

NEW

CHRONICLE



CHRONICLE

## PENANCE

**Yuna:** Grand Summon Yojimbo  
Pay 70000 / Zanmato

*Load previous save if the amount doesn't work  
and try again*

*Load previous save if Yojimbo does an  
auto-attack*

*Use the Save Sphere to heal after the fight*

**! PERSEVERANCE - Defeat Penance**



## REWARDS

## SPHERE LEVEL CHECK IN

**Auron:**  
**Kimahri:**  
**Lulu:**  
**Rikku:**  
**Tidus:**  
**Wakka:**  
**Yuna:**

HELP

Select destination.

Calm Lands

Sin

Baaj Temple

Besaid Island

Besaid Ruins 1

Besaid Ruins 2

Besaid Falls

Kilika Port

Luca

Mi'ihen Highroad

Mi'ihen Ruins

Mushroom Rock

Battle Site

Djose Highroad

Moonflow

Guadosalam

NEW

NEW

CHRONICLE



OSORC



HELP

Change equipment.

Tidus

HP 9999 / 9999  
MP 999 / 999

S.Lv 53

Next

11819 AP



OVERDRIVE

Mode

Stoic



Weapon



Taming Sword

Armor



Sanctuary

Equipment

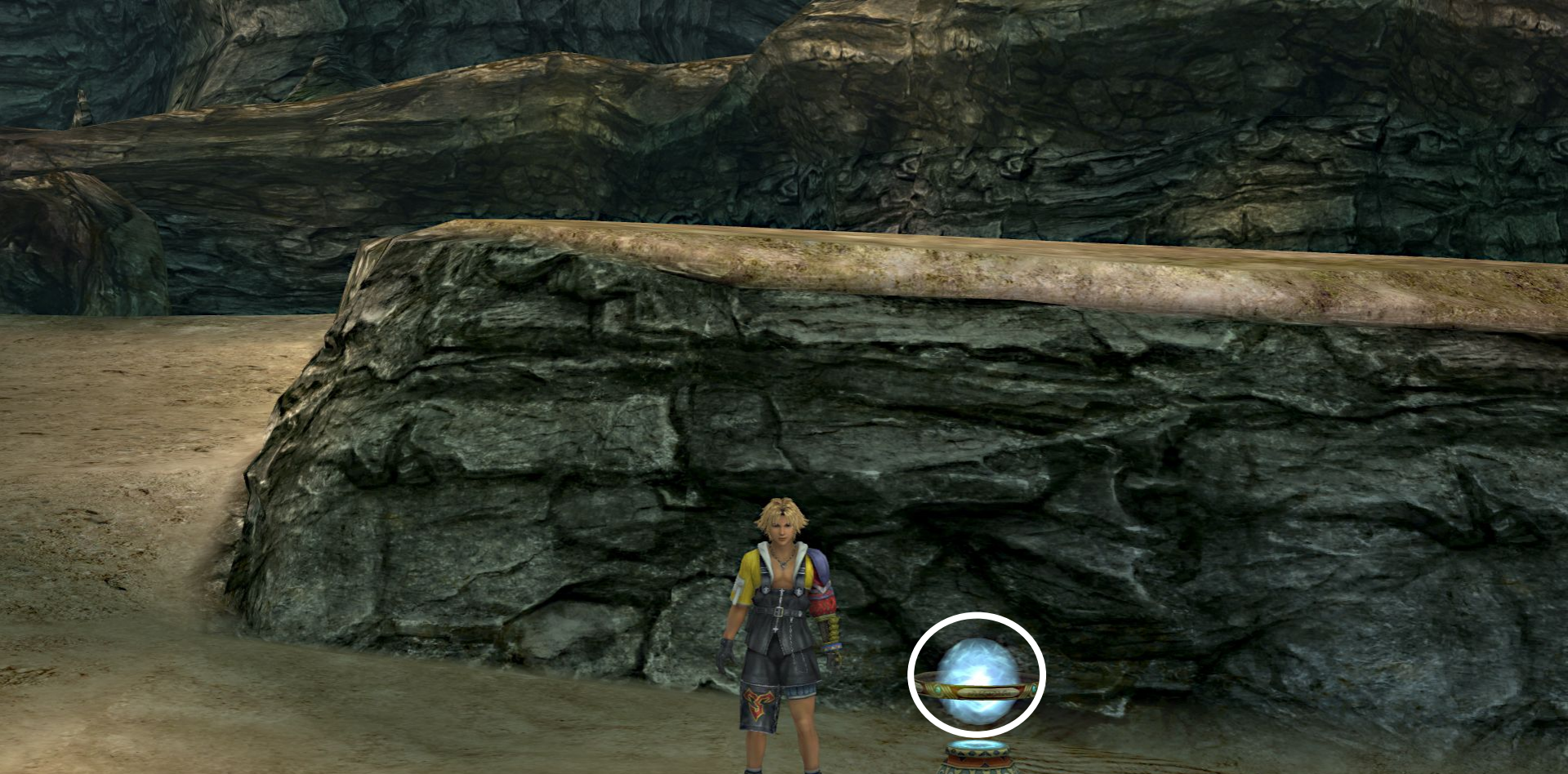
Abilities



Capture



First Strike



Save

## COMBAT TURNS

**Tidus/Yuna:** Escape

**Rikku:** Slowga/Steal x9 (3 items per enemy)

**Rikku:** Flee

! A TALENT FOR ACQUISITION - Steal successfully with Rikku 200 times



## REWARDS

Item:

## SPHERE LEVEL CHECK IN

Auron:

Kimahri:

Lulu:

Rikku:

Tidus:

Wakka:

Yuna:

HELP

Select destination.

Djose Highroad

Sin

BaaJ Temple

Besaid Island

Besaid Ruins 1

Besaid Ruins 2

Besaid Falls

Kilika Port

Luca

Mi'ihen Highroad

Mi'ihen Ruins

NEW

Mushroom Rock

Battle Site

NEW

Djose Highroad

Moonflow

Guadosalam

OSORC



SA



Save



**ROAD TO COMPLETION**  
**FINAL FANTASY X**  
**HD REMASTER**

**40**

HELP

Set battle formation.

Tidus	HP MP	9999 / 9999 999 / 999	S.Lv 53
▶ Wakka	HP MP	9999 / 9999 999 / 999	S.Lv 99
Rikku	HP MP	9999 / 9999 999 / 999	S.Lv 99
Lulu	HP MP	9999 / 9999 999 / 999	S.Lv 20
Auron	HP MP	9999 / 9999 999 / 999	S.Lv 65
Kimahri	HP MP	9999 / 9999 999 / 999	S.Lv 74
Yuna	HP MP	9999 / 9999 999 / 999	S.Lv 99

136:22

1434409 gil

Location

Sin - Near Airship

Sphere Grid

Items

Abilities

Overdrive

Equip

Status

Aeons

▶ Formation

Customize

Config

Help

HELP

Change equipment.

Wakka

HP 9999 / 9999  
MP 999 / 999

S.Lv

99

Next

22000 AP



OVERDRIVE

Mode

Comrade

Weapon



Breakaway



Armor



Off-Season

Equipment

Abilities



HP +10%



No Encounters



GO



GO





GO

GO



100%

GO

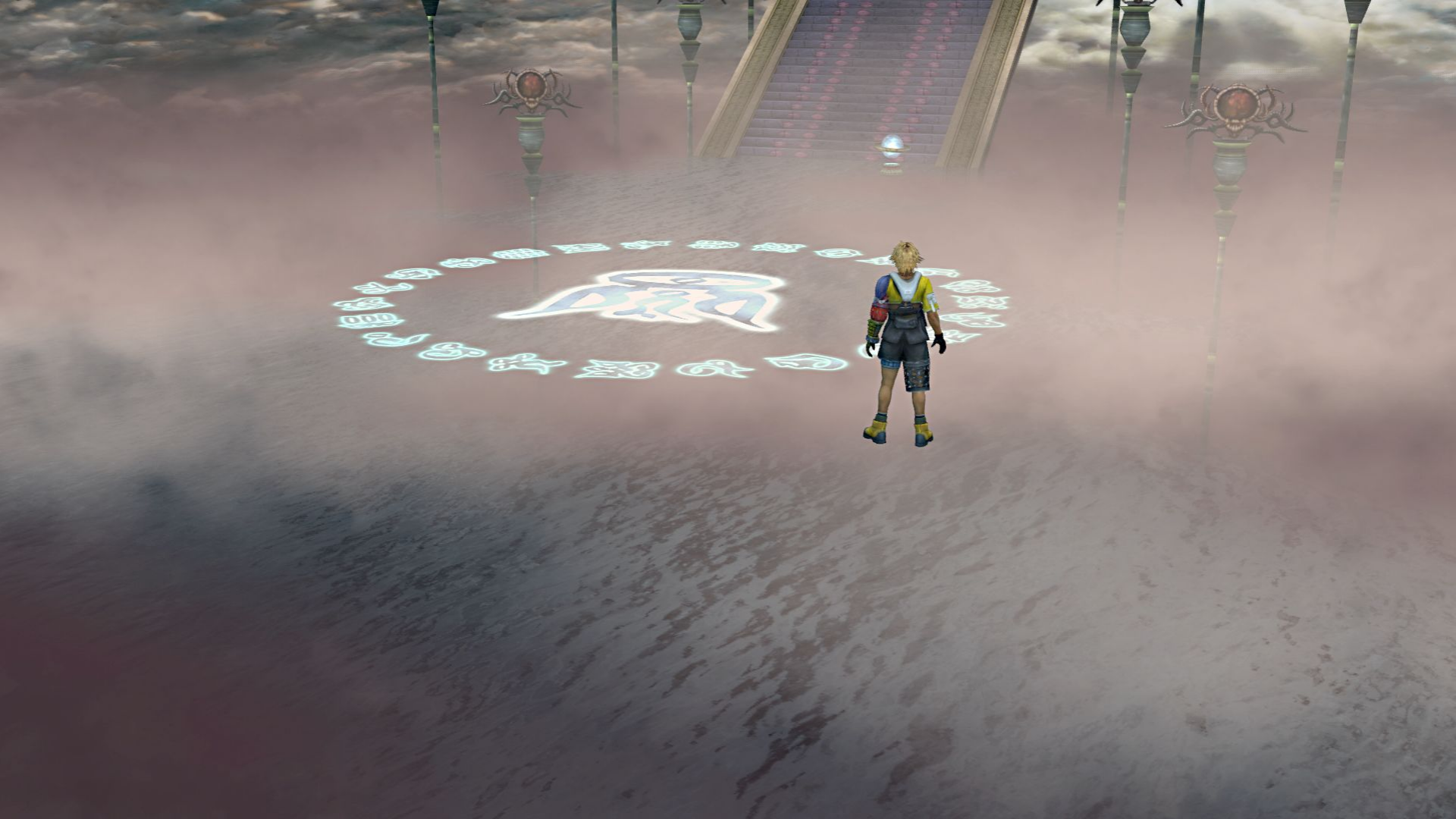


GO





GO





GO



A character with blonde hair, wearing a yellow shirt, grey shorts, and a backpack, stands in a dark, stone-walled room. The room features large, rectangular stone blocks and a central platform. A blue box with the word "GO" is positioned above the character. The lighting is dim, with some greenish-blue highlights on the walls and floor.

GO



GO



GO

GO





Save



GO



x09

0



HELP

Change equipment.

Tidus

HP 9999 / 9999  
MP 999 / 999

S.Lv

53

Next

11819 AP



OVERDRIVE

Mode

Stoic



Weapon



Caladbolg

Armor



Sanctuary

Equipment

Abilities



Break Damage Limit



Triple Overdrive



Evade & Counter



Magic Counter



GO

## COMBAT TURNS

Party: Quick Hit



## REWARDS

Item:

## SPHERE LEVEL CHECK IN

Auron:  
Kimahri:  
Lulu:  
Rikku:  
Tidus:  
Wakka:  
Yuna:

## COMBAT TURNS

Party: Quick Hit



## REWARDS

Item:

## SPHERE LEVEL CHECK IN

Auron:  
Kimahri:  
Lulu:  
Rikku:  
Tidus:  
Wakka:  
Yuna:

▶ Valefor

Ifrit

Ixion

Shiva

Bahamut

Anima

Yojimbo

Magus Sisters



## COMBAT TURNS

Party: Quick Hit



## REWARDS

Item:

## SPHERE LEVEL CHECK IN

Auron:  
Kimahri:  
Lulu:  
Rikku:  
Tidus:  
Wakka:  
Yuna:

Valefor

▶ Ifrit

Ixion

Shiva

Bahamut

Anima

Yojimbo

Magus Sisters



## COMBAT TURNS

Party: Quick Hit



## REWARDS

Item:

## SPHERE LEVEL CHECK IN

Auron:  
Kimahri:  
Lulu:  
Rikku:  
Tidus:  
Wakka:  
Yuna:



Valefor  
Ifrit  
Ixon  
Shiva  
Bahamut  
Anima  
Yojimbo  
Magus Sisters



Ixon



## COMBAT TURNS

Party: Quick Hit



## REWARDS

Item:

## SPHERE LEVEL CHECK IN

Auron:  
Kimahri:  
Lulu:  
Rikku:  
Tidus:  
Wakka:  
Yuna:

Valefor  
Ifrit  
Ixion  
▶ Shiva  
Bahamut  
Anima  
Yojimbo  
Magus Sisters



## COMBAT TURNS

Party: Quick Hit



## REWARDS

Item:

## SPHERE LEVEL CHECK IN

Auron:

Kimahri:

Lulu:

Rikku:

Tidus:

Wakka:

Yuna:

Valefor  
Ifrit  
Ixion  
Shiva

▶ Bahamut

Anima  
Yojimbo  
Magus Sisters



## COMBAT TURNS

Party: Quick Hit



## REWARDS

Item:

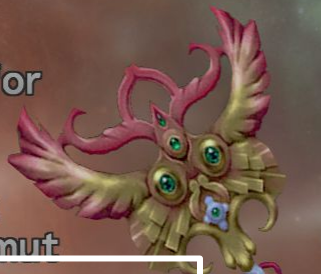
## SPHERE LEVEL CHECK IN

Auron:  
Kimahri:  
Lulu:  
Rikku:  
Tidus:  
Wakka:  
Yuna:

Valefor  
Ifrit  
Ixion  
Shiva  
Bahamut



Anima  
Yojimbo  
Magus Sisters



## COMBAT TURNS

Party: Quick Hit



## REWARDS

Item:

## SPHERE LEVEL CHECK IN

Auron:  
Kimahri:  
Lulu:  
Rikku:  
Tidus:  
Wakka:  
Yuna:





Valefor

Ifrit

Ixion

Shiva

Bahamut

Anima

▶ Yojimbo

Magus Sisters



## COMBAT TURNS

Party: Quick Hit



## REWARDS

Item:

## SPHERE LEVEL CHECK IN

Auron:  
Kimahri:  
Lulu:  
Rikku:  
Tidus:  
Wakka:  
Yuna:

Valefor  
Ifrit  
Ixion  
Shiva  
Bahamut  
Anima  
Yo Jimbo

▶ Magus Sisters



## COMBAT TURNS

Party: Quick Hit



## REWARDS

Item:

## SPHERE LEVEL CHECK IN

Auron:  
Kimahri:  
Lulu:  
Rikku:  
Tidus:  
Wakka:  
Yuna:

## COMBAT TURNS

Party: Quick Hit

! THE ETERNAL CALM - Defeat Yu Yevon



## REWARDS

Item:

## SPHERE LEVEL CHECK IN

Auron:  
Kimahri:  
Lulu:  
Rikku:  
Tidus:  
Wakka:  
Yuna:

FINAL FANTASY X

FINAL FANTASY X  
ETERNAL CALM

FINAL FANTASY X-2

FINAL FANTASY X-2  
LAST MISSION

CREDITS & BONUS AUDIO

ADDITIONAL CREDITS



**! A JOURNEY'S CATALYST - View "Eternal Calm"**  
**! COMPLETION - Obtain all available trophies**