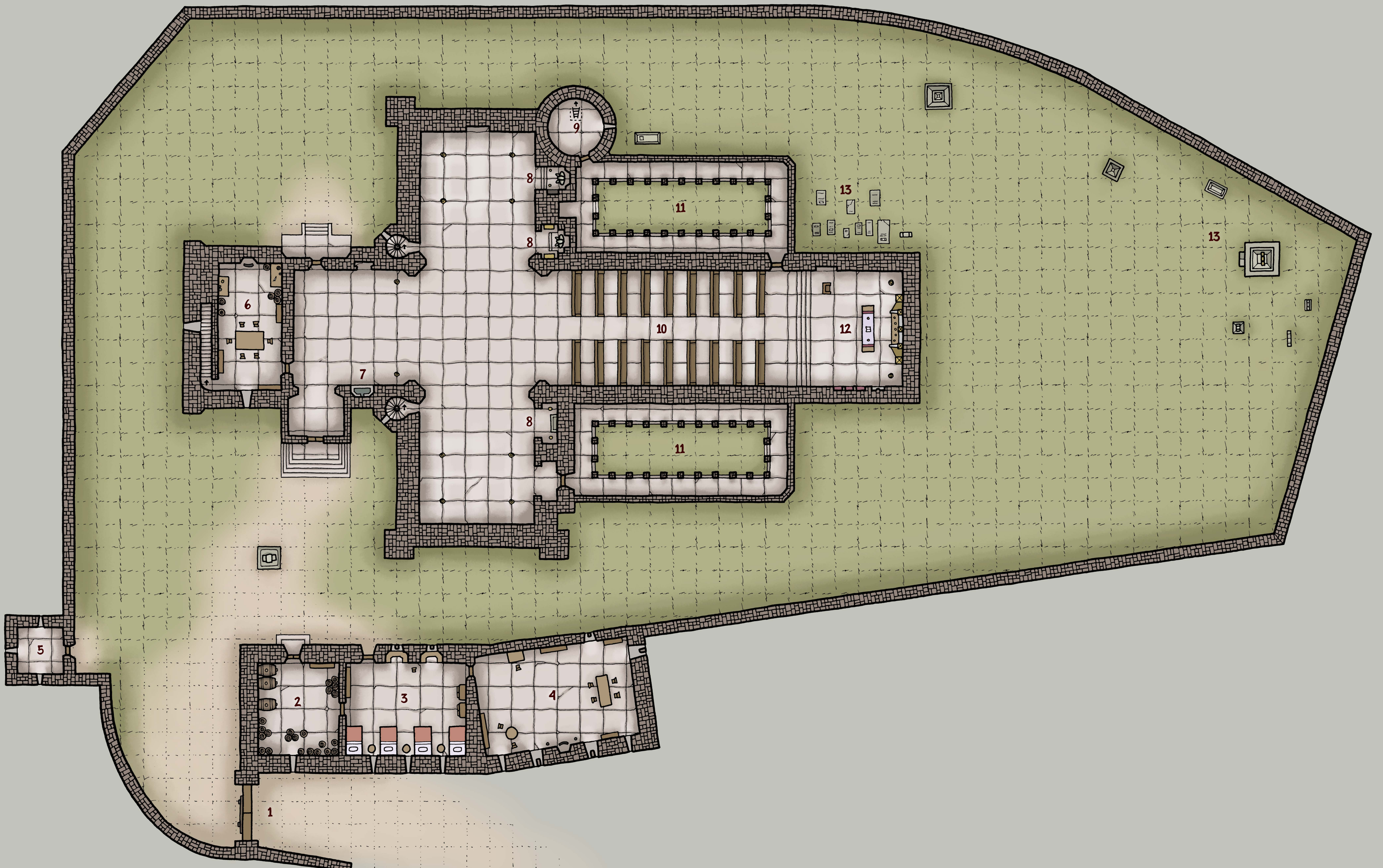
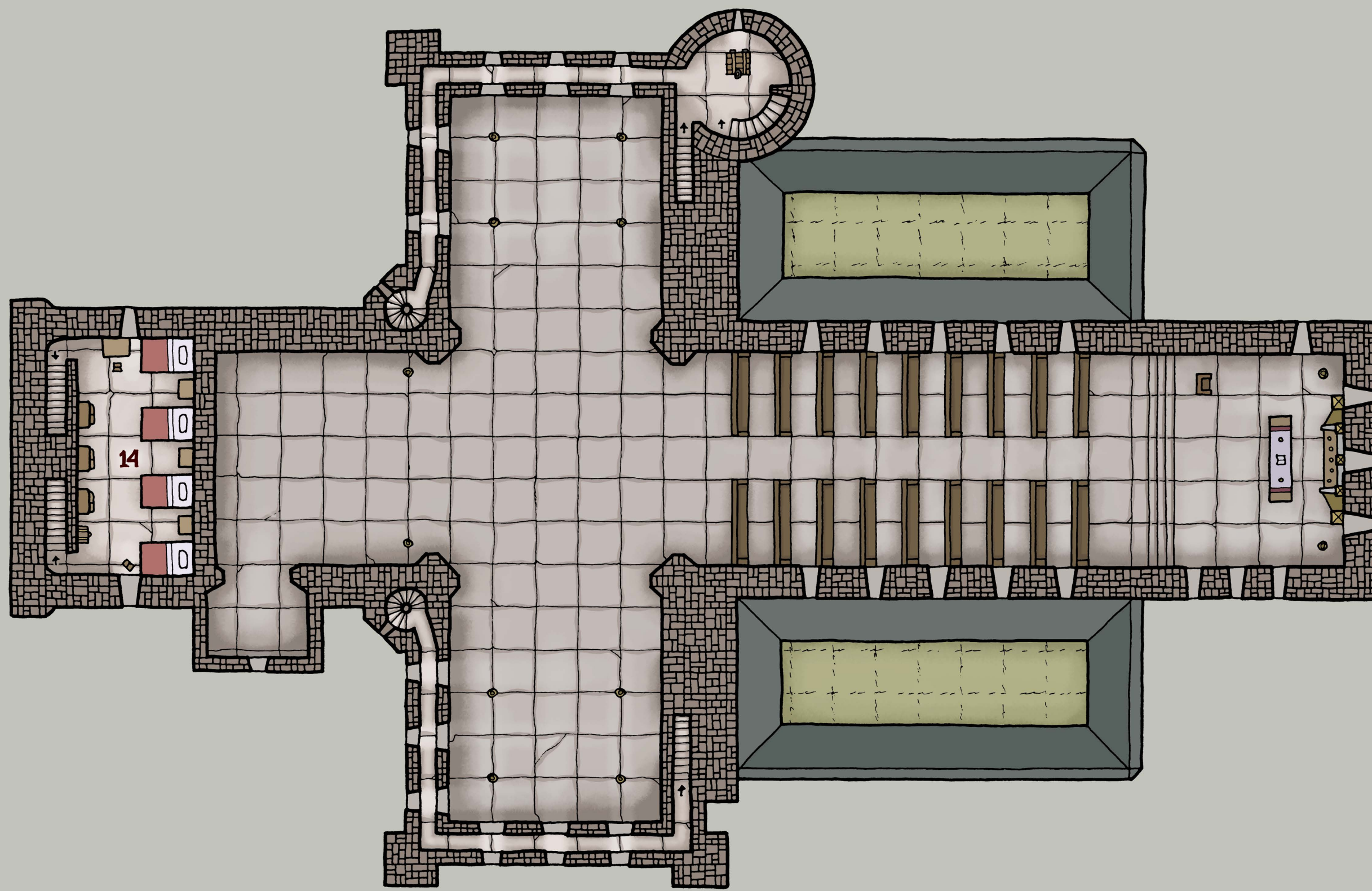
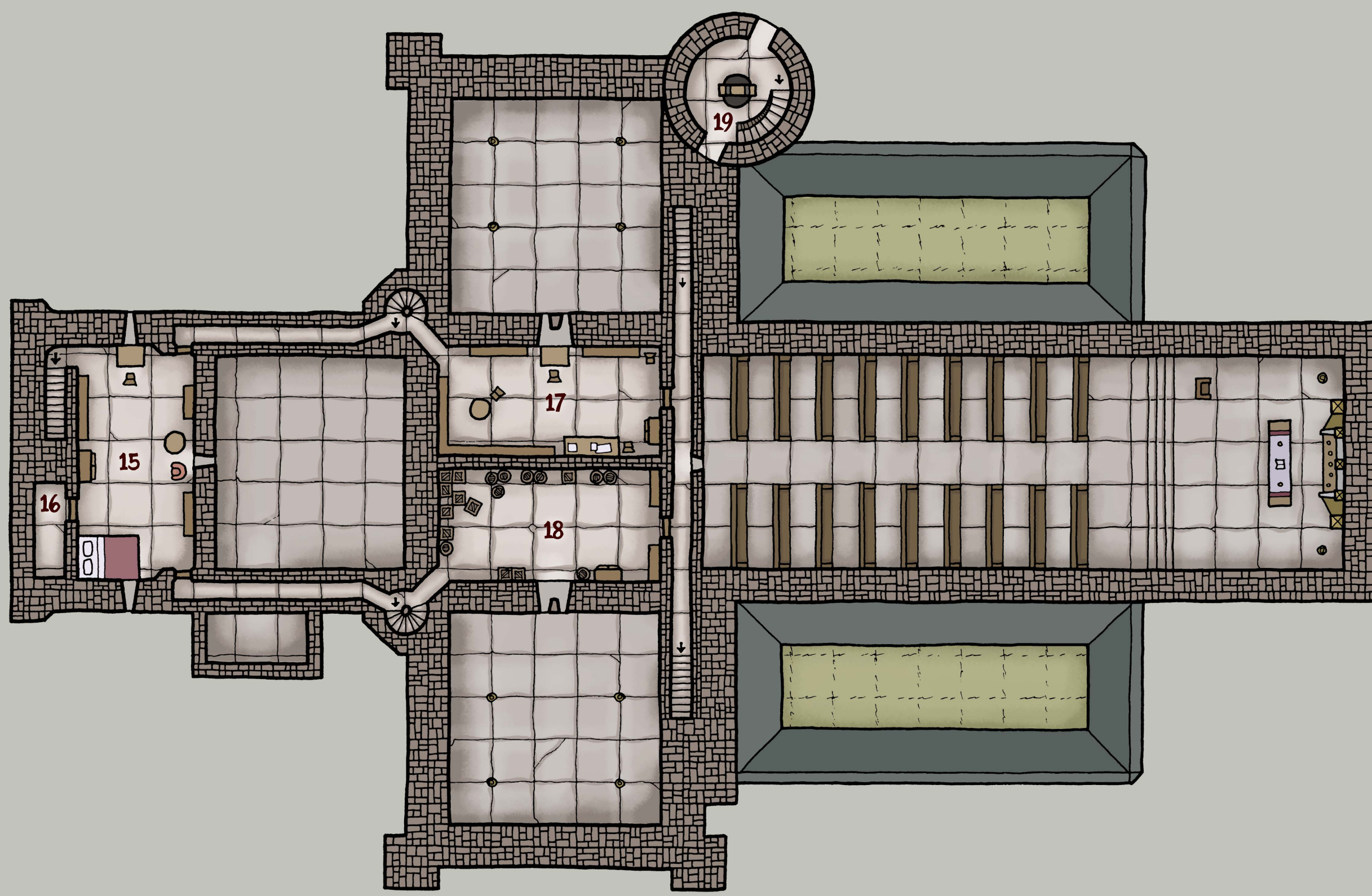
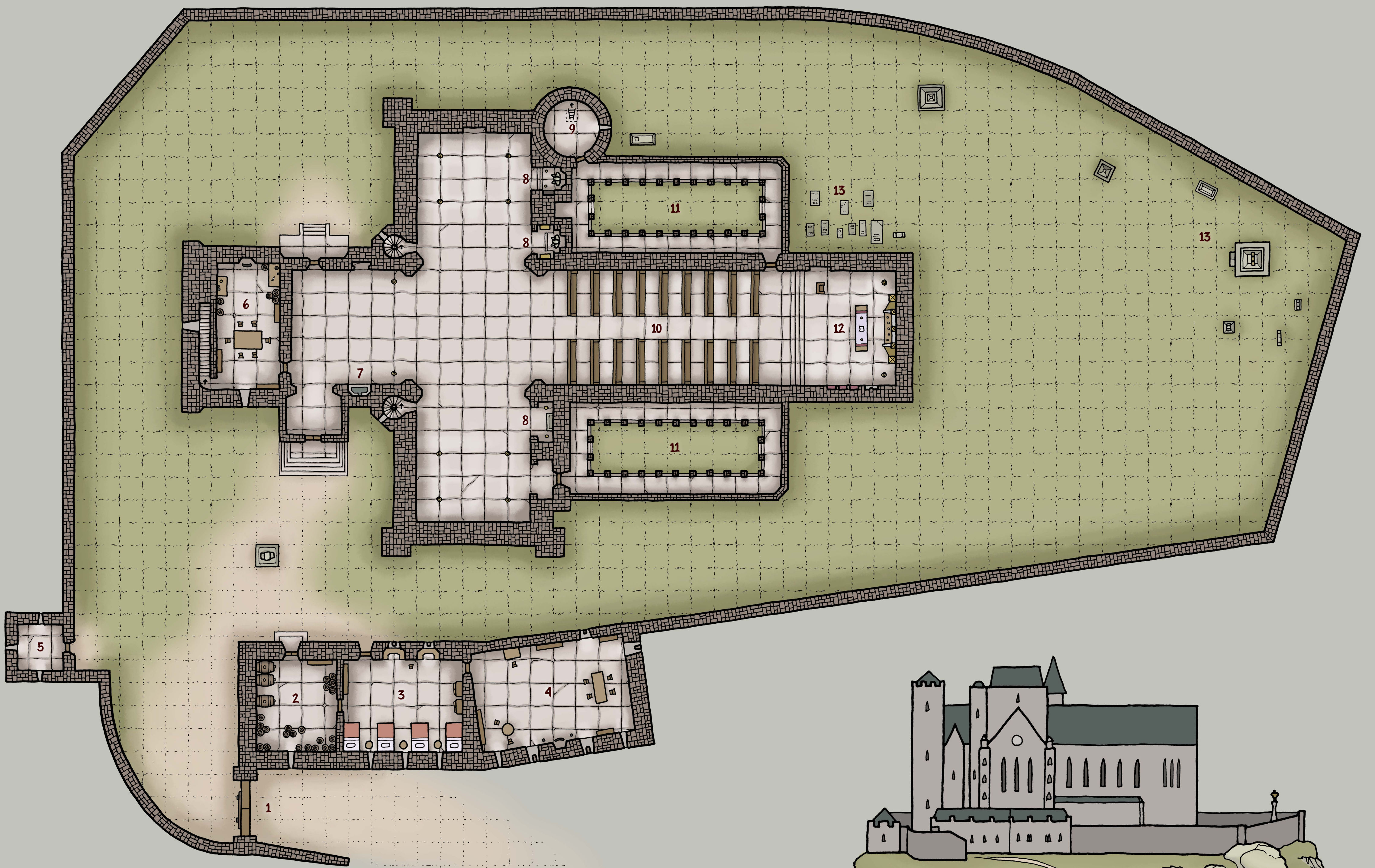
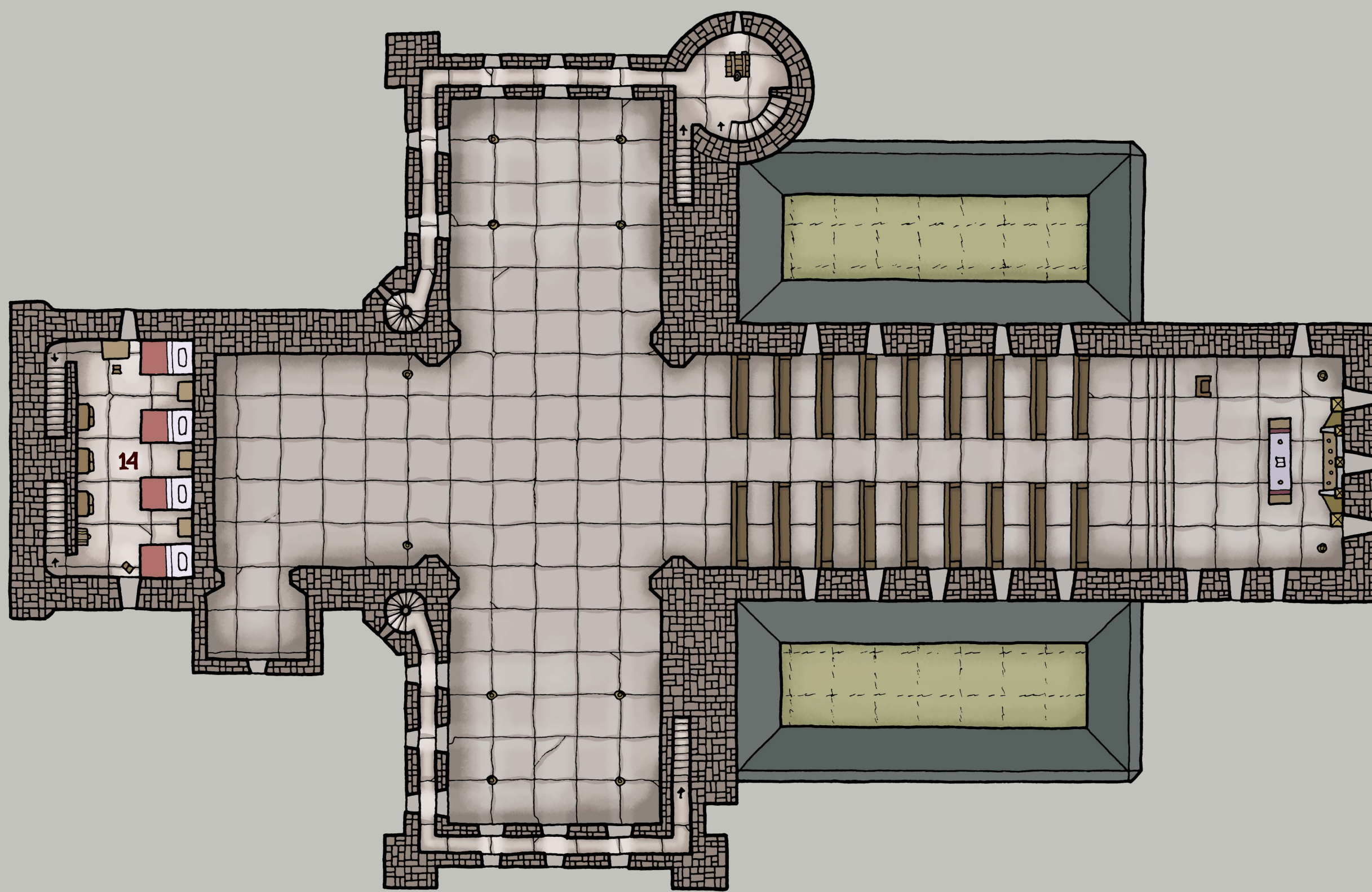


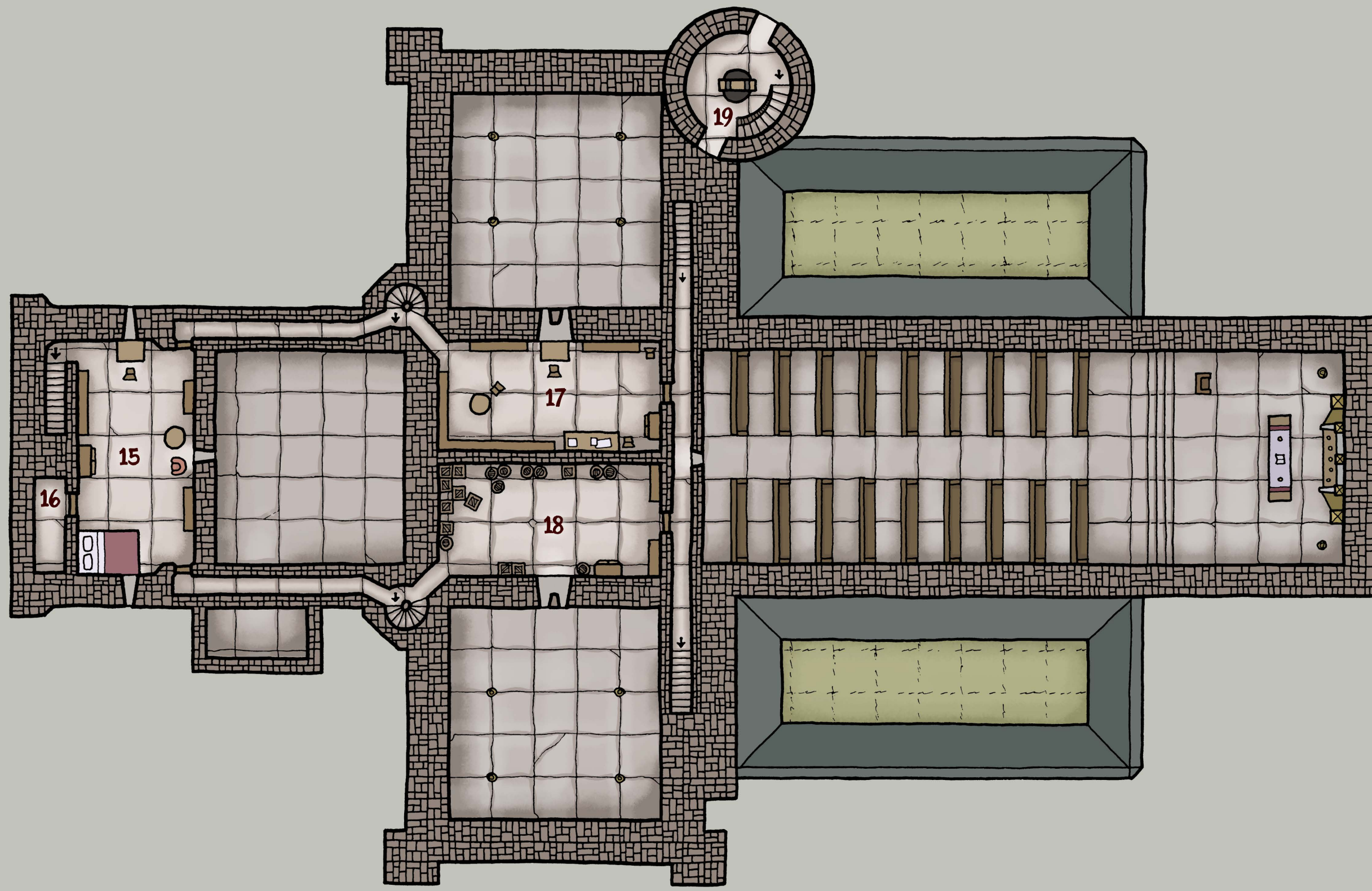
- 1 - GATE
- 2 - FOOD AND WINE STORES
- 3 - GUARDS' QUARTERS
- 4 - COMMON ROOM
- 5 - TURRET
- 6 - KITCHEN
- 7 - BAPTISMAL FONT
- 8 - CHAPEL
- 9 - BELL TOWER
- 10 - PEWS
- 11 - CLOISTERS
- 12 - ALTAR
- 13 - GRAVEYARD
- 14 - CLERICS' QUARTERS
- 15 - ARCHBISHOP'S APARTMENT
- 16 - WARDROBE
- 17 - ARCHBISHOP'S OFFICE
- 18 - STORAGE (MISC.)
- 19 - BELFRY



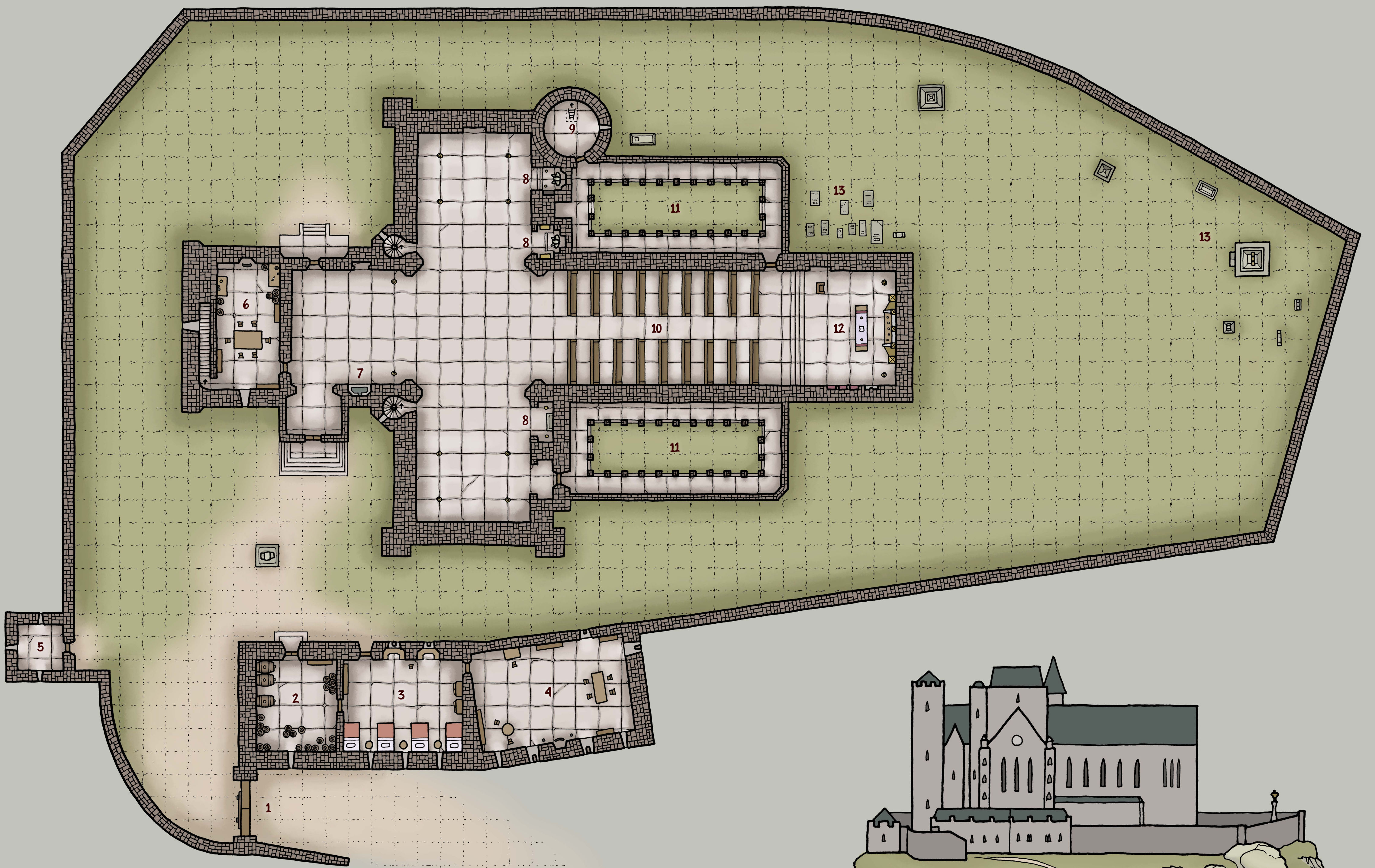
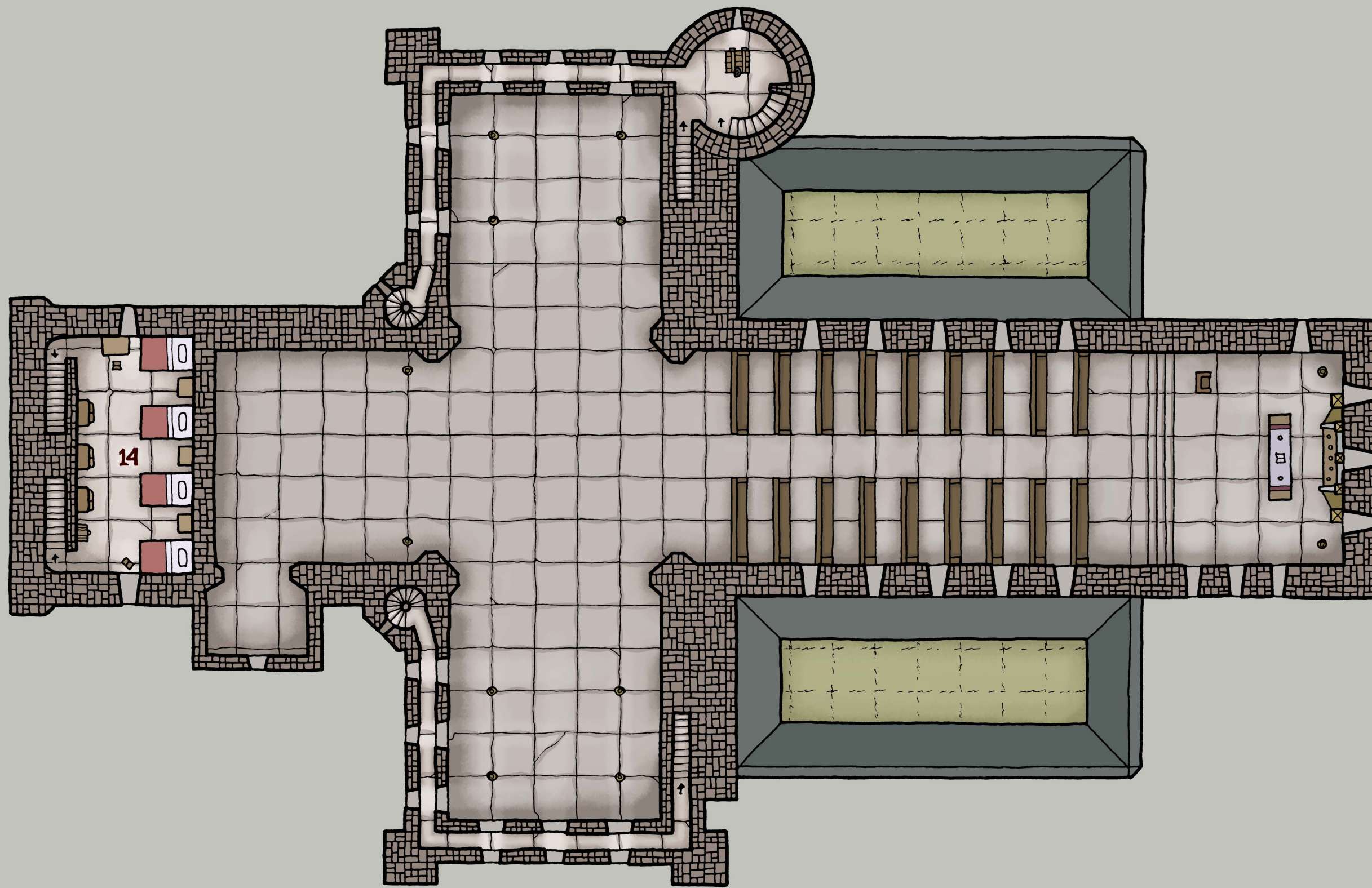


- 1 - GATE
- 2 - FOOD AND WINE STORES
- 3 - GUARDS' QUARTERS
- 4 - COMMON ROOM
- 5 - TURRET
- 6 - KITCHEN
- 7 - BAPTISMAL FONT
- 8 - CHAPEL
- 9 - BELL TOWER
- 10 - PEWS
- 11 - CLOISTERS
- 12 - ALTAR
- 13 - GRAVEYARD
- 14 - CLERICS' QUARTERS
- 15 - ARCHBISHOP'S APARTMENT
- 16 - WARDROBE
- 17 - ARCHBISHOP'S OFFICE
- 18 - STORAGE (MISC.)
- 19 - BELFRY

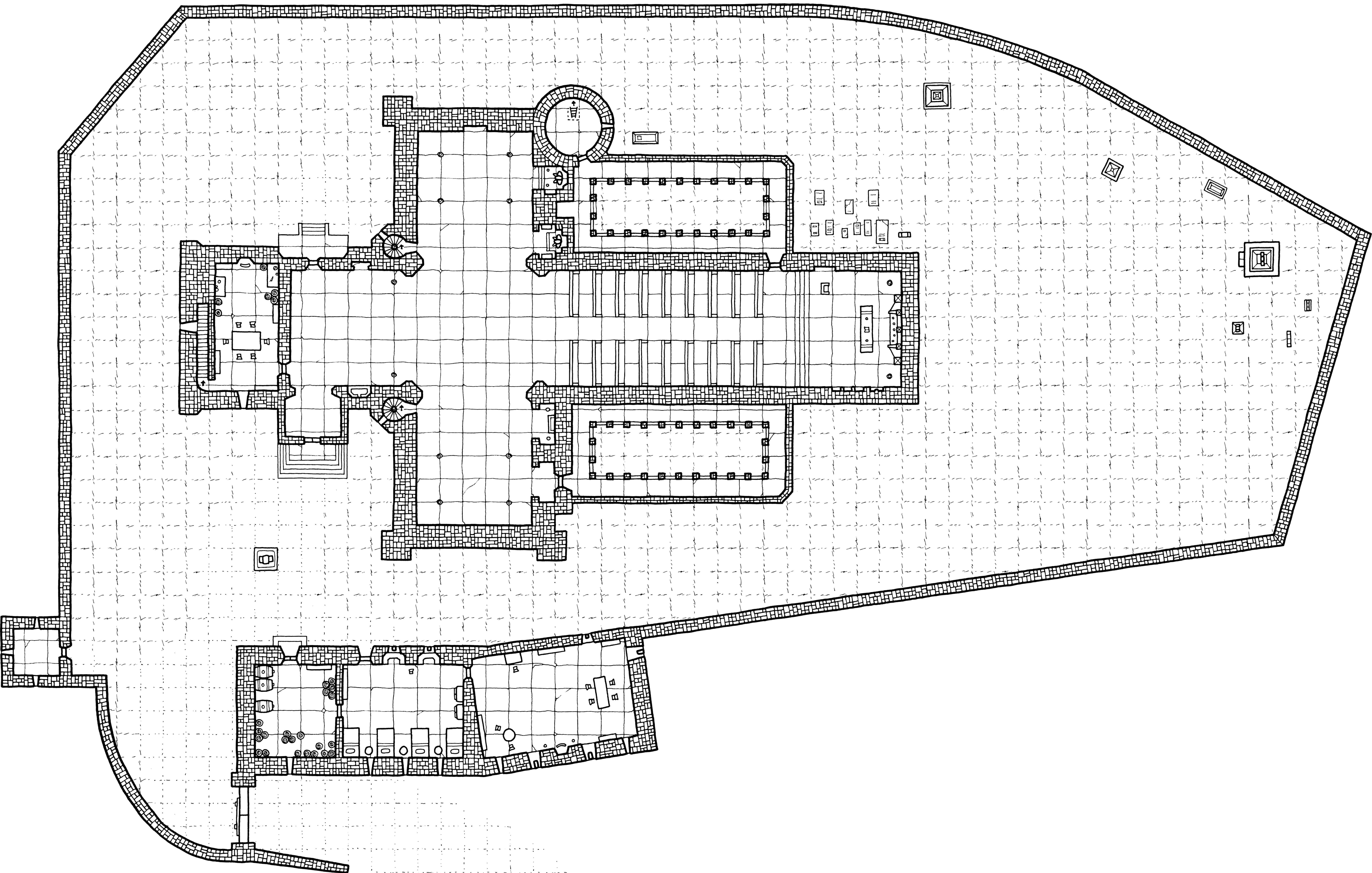
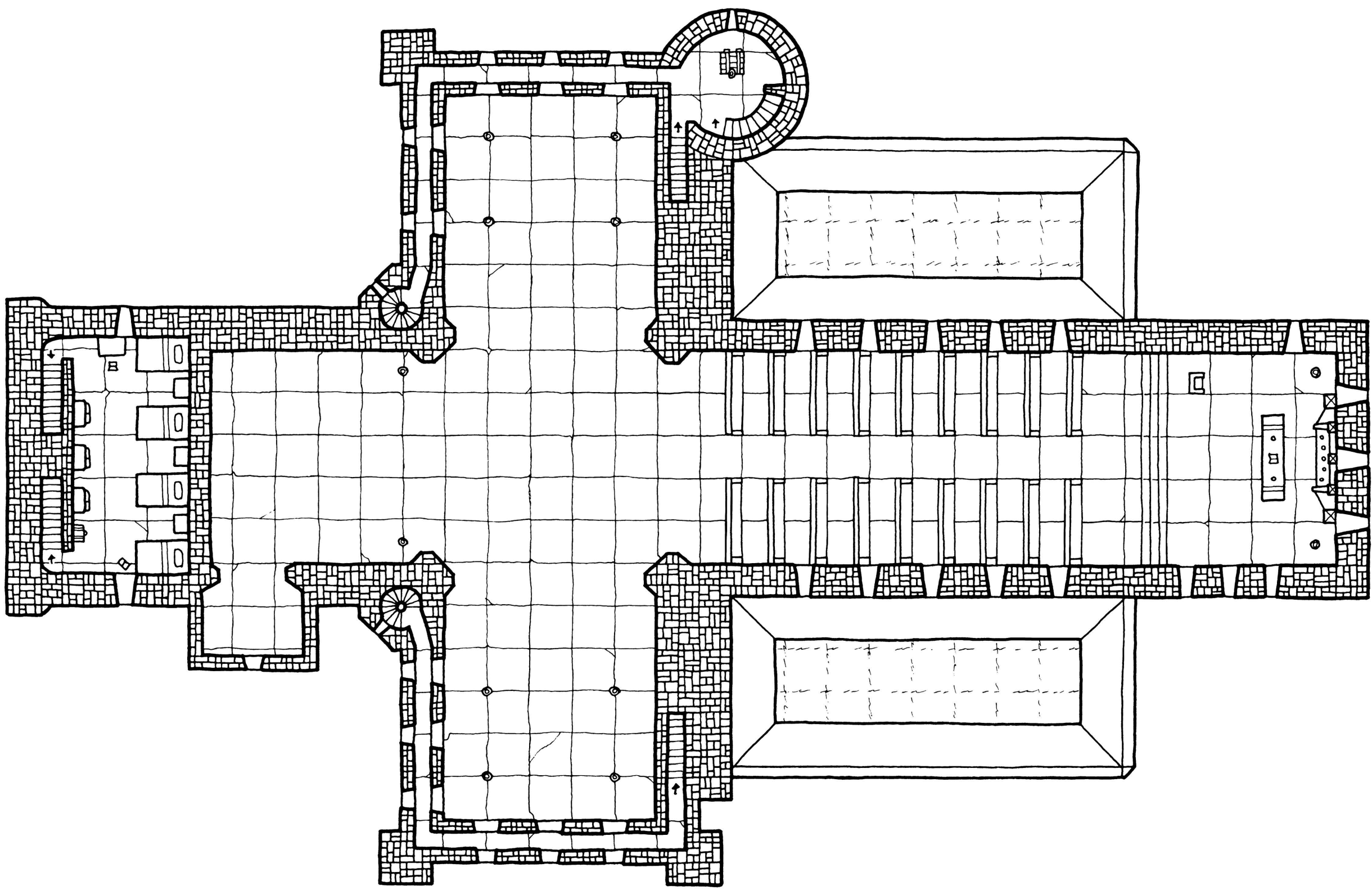
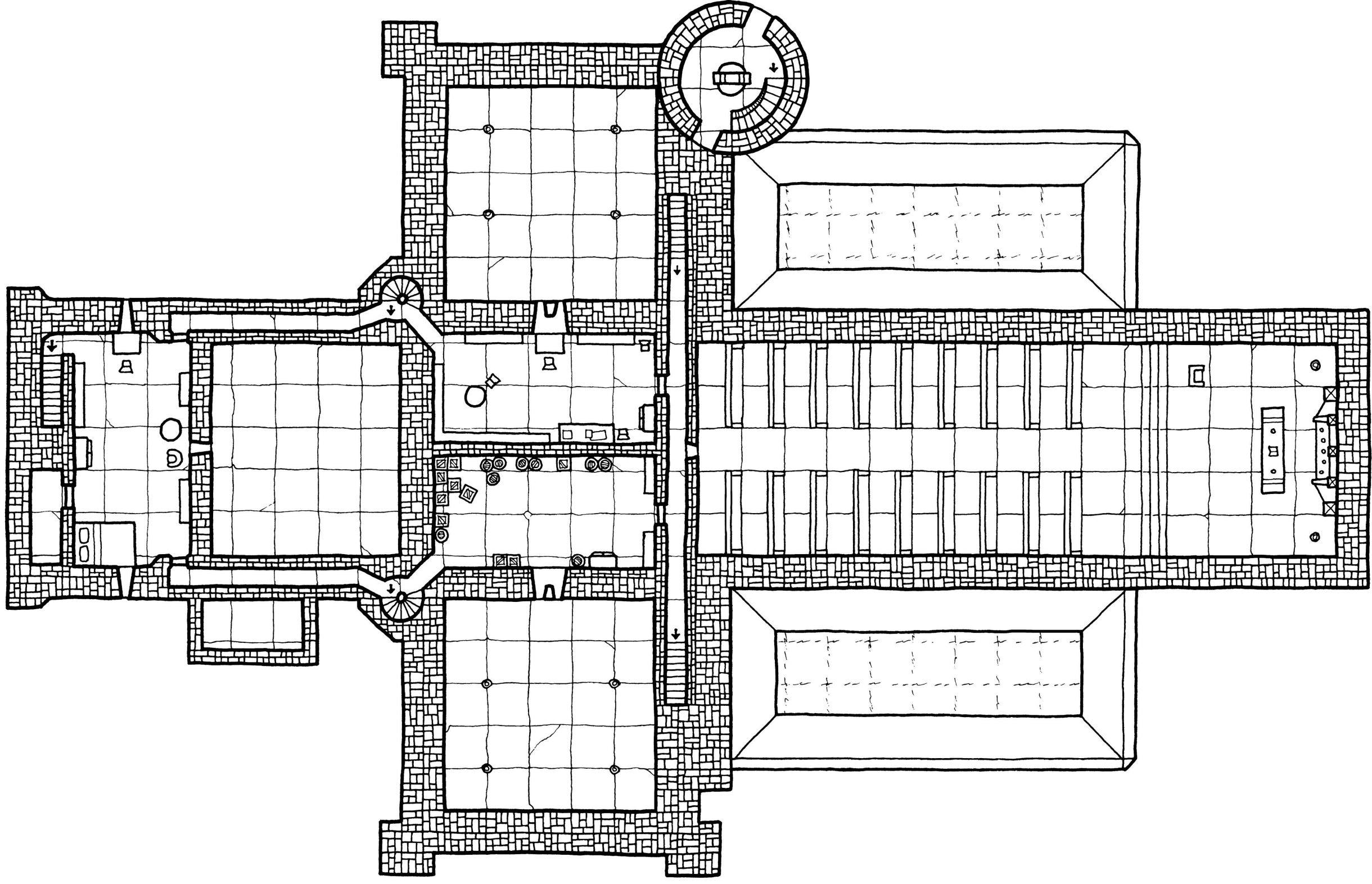




- 1 - GATE
- 2 - FOOD AND WINE STORES
- 3 - GUARDS' QUARTERS
- 4 - COMMON ROOM
- 5 - TURRET
- 6 - KITCHEN
- 7 - BAPTISMAL FONT
- 8 - CHAPEL
- 9 - BELL TOWER
- 10 - PEWS
- 11 - CLOISTERS
- 12 - ALTAR
- 13 - GRAVEYARD
- 14 - CLERICS' QUARTERS
- 15 - ARCHBISHOP'S APARTMENT
- 16 - WARDROBE
- 17 - ARCHBISHOP'S OFFICE
- 18 - STORAGE (MISC.)
- 19 - BELFRY



SAINT'S ROCK



SAINT'S ROCK

- Saint's Rock is a fortified cathedral strongly inspired by Ireland's Rock of Cashel.
- Saint's Rock is not as heavily fortified as a proper castle, but it is situated on a steep, rocky hill and is surrounded by a thick curtain wall with a heavy gate. In addition, the windows of the guardhouse can be used to fire upon attackers.
- The tower on the left is a residence for the priests, with an apartment at the top for the archbishop.
- The baptismal font by the entrance serves a dual purpose as the cathedral's water supply. It leads directly to an underground well.
- The small recesses in the walls of the ground floor are tomb niches, with the remains of notable clergy or wealthy nobles entombed in the wall behind them.

THE ROCK OF CASHEL

- The Rock of Cashel, upon which this map is largely based, is a cathedral in the south of Ireland. Originally, it was not a cathedral, but a castle belonging to Brian Boru, the High King of Ireland. Brian's great-grandson later gave the castle to the church, who built a cathedral in its place. The gates and curtain wall were kept, however, making it an exceptionally well-protected church.

- There are a number of differences between Saint's Rock and the Rock of Cashel, but the most notable is that the chapel building just below the Rock of Cashel's main hall has been removed and a cloister put in its place, as well as another cloister on the opposite side.
- Also, the small building in front with the guards' quarters was actually called the "Hall of the Vicars Choral" and was used as housing for the choir.

