



Francie

SKIRT

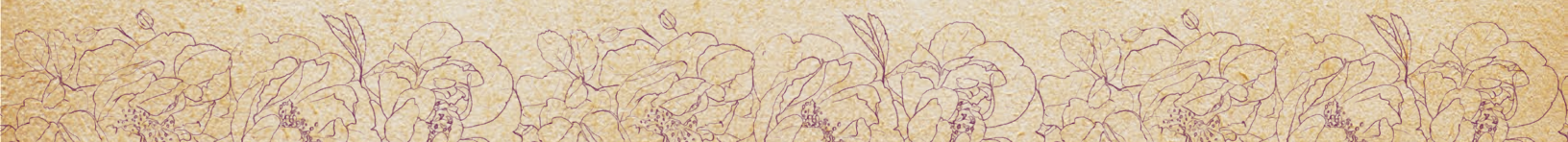
A PATREON EXCLUSIVE PATTERN



MIX & MATCH

with the
Barbie Top,
Skipper Dress,
and Francie
Top!

© 2023 Charm Patterns
by Gertie





The Francie Skirt expands our Barbie series and gives you so many options to create the perfect comfy knit dress!

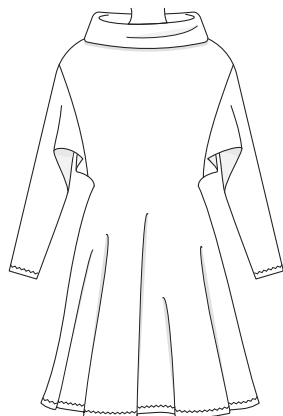
With two different lengths, you can create a short skater skirt dress with the Skipper bodice, then make a matching longer A-line dress with the Barbie Turtleneck. And, of course, the Francie Skirt is the perfect companion to the Francie Top, too. There are just so many options to choose from!

I'd love to see what combinations you design, so please be sure to share them with #charmpatterns and #francieskirt so I can admire all your makes!

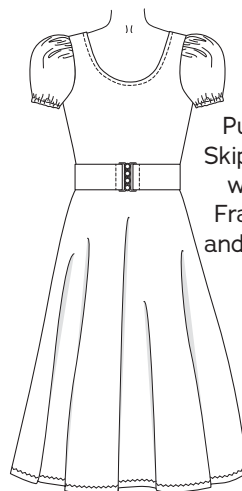
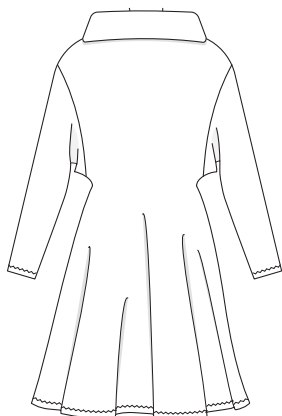
xoxo, Gertie



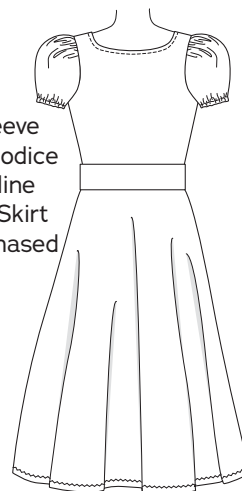
This pattern must be combined with one of the Barbie-series tops to create a dress. See more ideas on page 7.



Long Sleeve Francie Top with skater Francie Skirt



Puff Sleeve Skipper bodice with a-line Francie Skirt and purchased belt



SIZE CHART

The Francie Skirt is sized in women's US 2–20 and 18–34 sizes. Please use the chart below to pick your size. Take the Waist measurement at the smallest part of your torso and the Hip measurement at the widest part of your hips.

Not sure which size range to choose? Read more about our [two size ranges here!](#)

SIZES 2-20	2	4	6	8	10	12	14	16	18	20
Waist	24 in 61 cm	26 in 66 cm	28 in 71.1 cm	30 in 76.2 cm	32 in 81.3 cm	34 in 86.4 cm	36 in 91.4 cm	38 in 96.5 cm	40 in 101.6 cm	42 in 106.7 cm
Hips	36 in 91.4 cm	38 in 96.5 cm	40 in 101.6 cm	42 in 106.7 cm	44 in 111.8 cm	46 in 116.8 cm	48 in 121.9 cm	50 in 127 cm	52 in 132.1 cm	54 in 137.2 cm

SIZES 18-34	18	20	22	24	26	28	30	32	34
Waist	40 in 101.6 cm	42 in 106.7 cm	44 in 111.8 cm	46 in 116.8 cm	48 in 121.9 cm	50 in 127 cm	52 in 132.1 cm	54 in 137.2 cm	56 in 142.2 cm
Hips	48 in 121.9 cm	50 in 127 cm	52 in 132.1 cm	54 in 137.2 cm	56 in 142.2 cm	58 in 147.3 cm	60 in 152.4 cm	62 in 157.5 cm	64 in 162.6 cm

FIT NOTES

The Francie Skirt is a knit skirt meant to be combined with any Barbie-series bodice such as the Francie Top, Barbie Top, and Skipper Bodysuit to create a dress without a waistline seam. It is meant to be worn with positive ease through the waist and hip.

The pattern is designed to fit with between 2½ to 3½ inches (in) (6.4 to 8.9 cm) of ease at the waist and 7½ to 8½ in (19 to 21.6 cm) of ease in the hips. See the charts below for finished garment measurements.

Finished Measurements

Sizes 2-20	2	4	6	8	10	12	14	16	18	20
A-D/DD Waist	26.5 in 67.3 cm	28.5 in 72.4 cm	30.5 in 77.5 cm	32.5 in 82.6 cm	34.5 in 87.6 cm	36.5 in 92.7 cm	38.5 in 97.8 cm	40.5 in 102.9 cm	42.5 in 108 cm	44.5 in 113 cm
F-H Waist	27.5 in 69.9 cm	29.5 in 74.9 cm	31.5 in 80 cm	33.5 in 85.1 cm	35.5 in 90.2 cm	37.5 in 95.3 cm	39.5 in 100.3 cm	41.5 in 105.4 cm	43.5 in 110.5 cm	45.5 in 115.6 cm
Hip	43.5 in 110.5 cm	45.5 in 115.6 cm	47.5 in 120.7 cm	49.5 in 125.7 cm	51.5 in 130.8 cm	53.5 in 135.9 cm	55.5 in 141 cm	57.5 in 146.1 cm	59.5 in 151.1 cm	61.5 in 156.2 cm

Sizes 18-34	18	20	22	24	26	28	30	32	34
A-D/DD Waist	42.5 in 108 cm	44.5 in 113 cm	46.5 in 118.1 cm	48.5 in 123.2 cm	50.5 in 128.3 cm	52.5 in 133.4 cm	54.5 in 138.4 cm	56.5 in 143.5 cm	58.5 in 148.6 cm
F-H Waist	42.5 in 108 cm	44.5 in 113 cm	46.5 in 118.1 cm	48.5 in 123.2 cm	50.5 in 128.3 cm	52.5 in 133.4 cm	54.5 in 138.4 cm	56.5 in 143.5 cm	58.5 in 148.6 cm
Hip	56.5 in 143.5 cm	58.5 in 148.6 cm	60.5 in 153.7 cm	62.5 in 158.8 cm	64.5 in 163.8 cm	66.5 in 168.9 cm	68.5 in 174 cm	70.5 in 179.1 cm	72.5 in 184.2 cm

For both size size ranges, the center-back length of the longer skirt is 27 in (68.6 cm) and the skater skirt is 21 in (53.3 cm).



Fabric Notes

We recommend light-to medium-weight knit fabrics: look for fabrics with around 50% stretch (you should be able to stretch 4 in of fabric to 6 in). We recommend 95% cotton/5% spandex blends, rib knits, stretch velvet, and jersey. You can also use cotton interlock, French terry, sweatshirt fleece, or ponte for this design, but you will likely need to size up since those fabrics generally have less stretch.

Materials & Notions

- Fabric for the skirt
- Thread to match
- Stretch/jersey sewing machine needle

Note: in addition to the fabric needed for the Barbie-series bodice, for the Francie Skirt, you will need approximately an additional 1¼ yds (1.1 m) of fabric for sizes 2-20 and 1⅝ yds (1.5 m) for sizes 18-34.

Pattern Pieces

1. Skirt Front

Attach to Barbie-series bodice at waistline and cut 1 fabric on fold

2. Skirt Back

Attach to Barbie-series bodice at waistline and cut 1 fabric on fold

SEWING INSTRUCTIONS

BEFORE SEWING

Transferring marks: use dressmaker's tracing paper and a tracing wheel to transfer all pattern markings to the wrong side (WS) of your fabric. Mark pattern notches by snipping into the seam allowance with the tip of your scissors.

Seam Finishing: if finishing seams with a serger, serge the following seam allowances (without trimming the edges) before construction. If you don't have a serger, consider using a zigzag or overlock stitch on your sewing machine. Knits typically do not fray, so seam finishing is optional.

- Side seams

NOTES

- 5/8-in (1.5 cm) seam allowances are included on all pattern pieces, except where otherwise noted.
- For the short skater skirt version, cut the pattern pieces at the short skirt cutting line.

TIPS

- Use a stretch or jersey/ball point sewing machine needle to avoid skipped stitches.
- Use a narrow zigzag stitch (1.5 mm wide by 2.5 mm long) or twin needle on hems to provide some stretch. Use a slightly wider zigzag stitch on seams (2.5 mm wide by 2.5 mm long) and slightly stretch the fabric as you are sewing it (this will help retain stretch in the fabric).
- Press your stitching lines after every step, even when not specified in the instructions.

SEW THE DRESS

The Francie Skirt is designed as an alternative skirt for any Barbie-series bodice to create a dress without a waistline seam. You must tape the individual pattern components together at the marked waistline, removing any seam allowances (if applicable).

Once the pattern pieces are taped together, follow the instructions in the Barbie-series top to complete your dress, sewing all of the way to the skirt hem when sewing the side seams and hemming as desired.

See the full list of mix and match options for this series at CharmPatterns.com/mix-and-match.

Enjoy your swishy new Francie Dress!

PATTERN PIECE LOCATION GUIDE

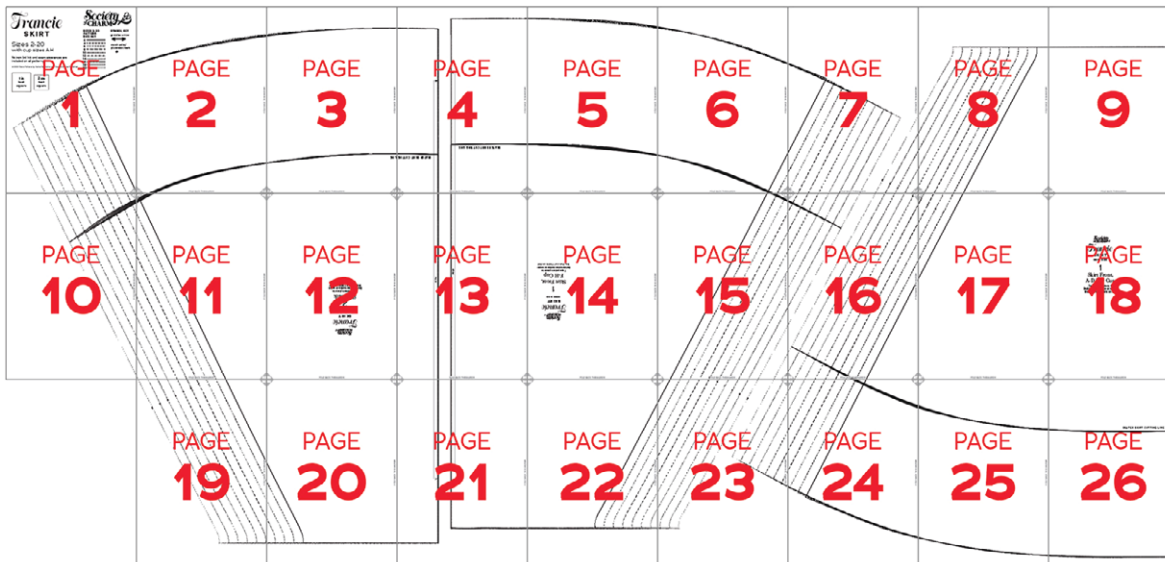
Here is a list to help you locate the pattern pieces on the letter-size tiled pages and AO pattern sheets. The tiled pieces and AO sheets are included as separate pdf files as part of this digital pattern.

PC#	Piece Name	SIZES 2-20		SIZES 18-34	
		Tiled	AO	Tiled	AO
1	Skirt Front, A-D/DD Cups	7-9, 15-18, 23-26	1	5-8, 16-19, 26-28	1
1	Skirt Front, F-H Cups	4-7, 13-16, 21-23	1	9-11, 19-22, 29-32	1
2	Skirt Back	1-4, 10-13, 19-21	2	1-4, 12-15, 23-25	2

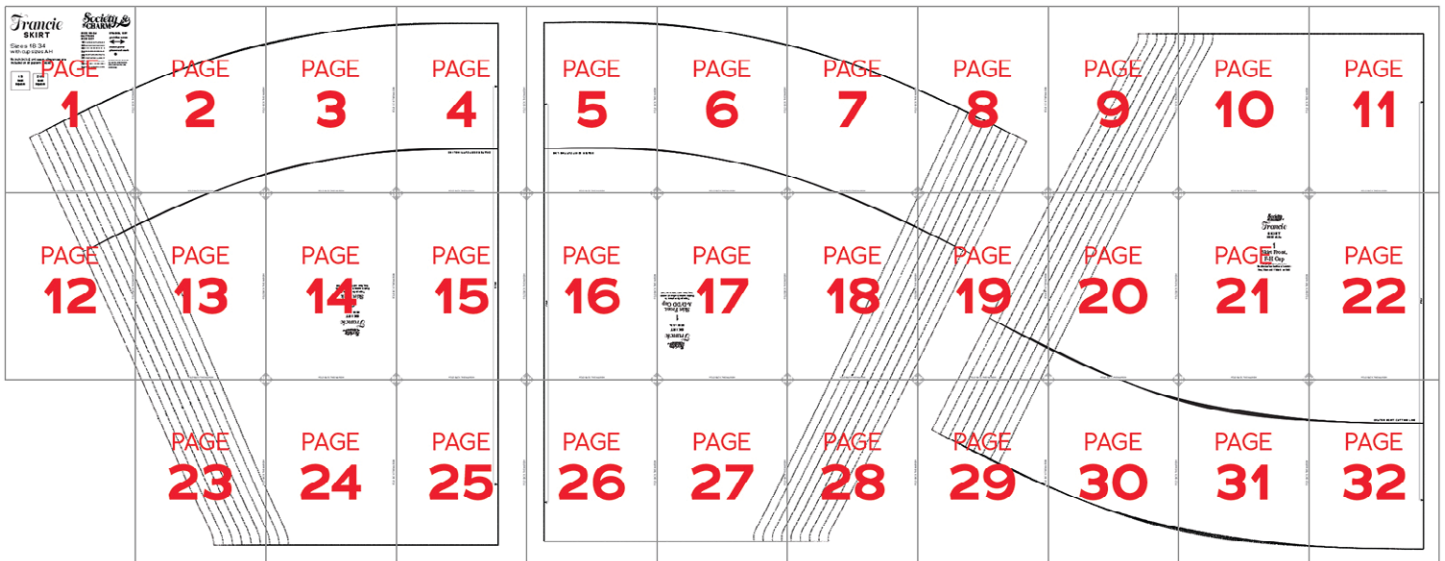


TILING MAPS

Sizes 2-20



Sizes 18-34



HOW TO USE THIS PATTERN

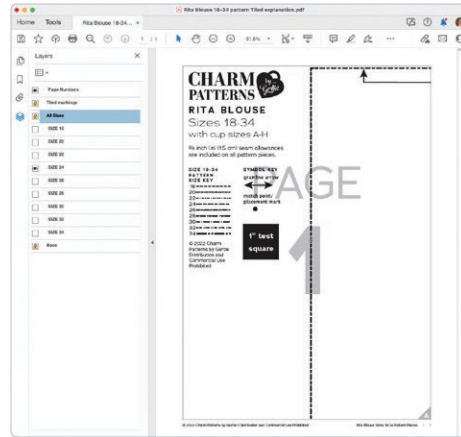
The pattern pieces are tiled so you can print them on Letter (8½" x 11") or A4 size paper. You can also send the A0 pattern sheet PDF to a local or online printer (like ThePlottedPattern.com) to print on large sheets (36" x 48" for U.S. or A0 for international).

This pattern includes size layers. To get the best results, open either the Tiled or A0 pattern pieces PDF in [Acrobat Reader](#).

Open the Layers Palette (View>Show/Hide>Navigation Panes>Layers) and hide all of the layer(s) except for the ones you want to print by clicking on the eye icon.

The All Sizes and Tiled Markings layers have general pattern information and will always print.

You may choose to turn off the Page Numbers layer. The page numbers will still appear at the bottom of each page in the footer.



WORKING WITH THE TILED PIECES

Go to File>Print and change the page range to the pages you need for the pieces you've chosen (see Pattern Pieces Printing Index). Make sure the Page Sizing settings to 100% or Actual Size. Test this after printing by measuring the 1" test box on the first page of the pattern pieces.

Cut apart any pattern pieces that share a page, then fold back or cut off the page margins on each page as marked.

Match the letters in the gray corner diamonds. Tape the pages together, butting up the folded or cut page edges with the gray margin lines.

MORE FROM GERTIE

[At CharmPatterns.com](http://CharmPatterns.com): Shop my sewing patterns and accessories.

[On YouTube](#): Learn beginner and advanced sewing skills and techniques through my tutorials and watch episodes of my Gertie's World series.

[On Instagram](#): Stay in the loop and get inspired.

[On Patreon](#): Access monthly patterns and tutorial videos.





MIX & MATCH

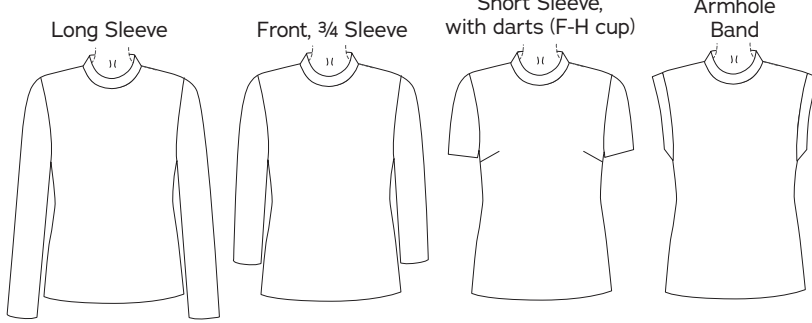
THE BARBIE SERIES

The following patterns can be interchanged with the Francie Skirt.

[Find more at CharmPatterns.com/mix-and-match.](https://CharmPatterns.com/mix-and-match)



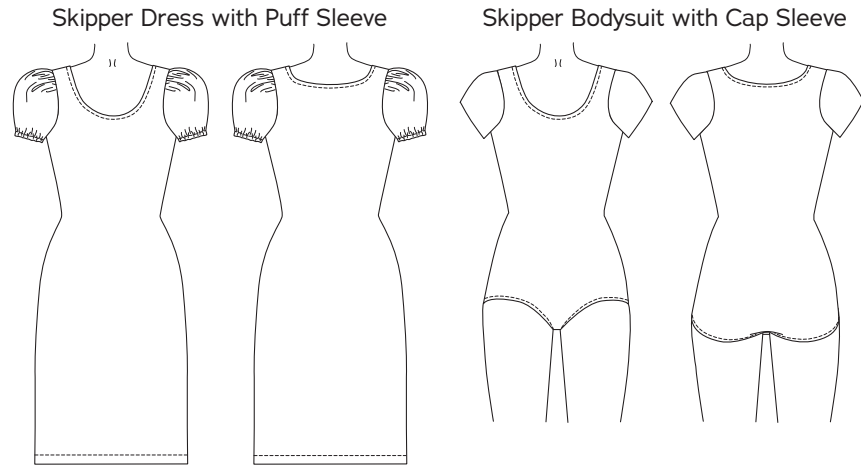
BARBIE TOP



PLUS: Barbie Turtleneck Expansion



SKIPPER DRESS AND BODYSUIT



FRANCIE TOP

