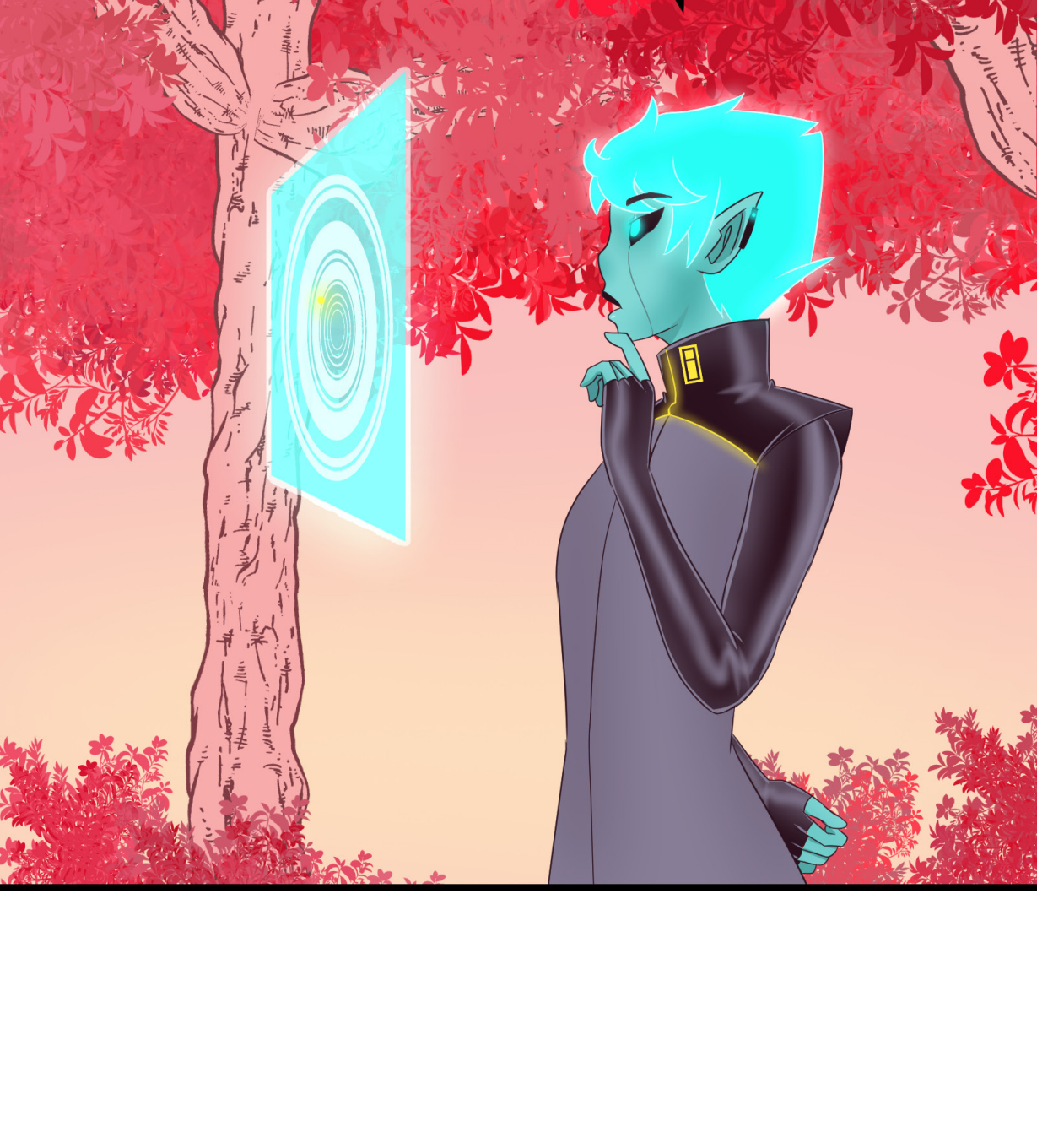


SPACE PLAYBOY

BY: DESERT PENGUIN

WE HAVE REACHED THE MARKER

LET US FIND A LOCATION TO BEGIN SEARCHING FOR ROSHAN



WHAT? WE DON'T EVEN HAVE THE ACTUAL PLACE TO LOOK FOR?



IT IS QUITE DIFFICULT FOR IDOL TO PINPOINT AN EXACT LOCATION



MOST PLANETS ARE USUALLY SIGNIFICANTLY BIGGER THAN EARTH, SO THE MOST THEY CAN PROVIDE US IS AN ESTIMATED LOCATION

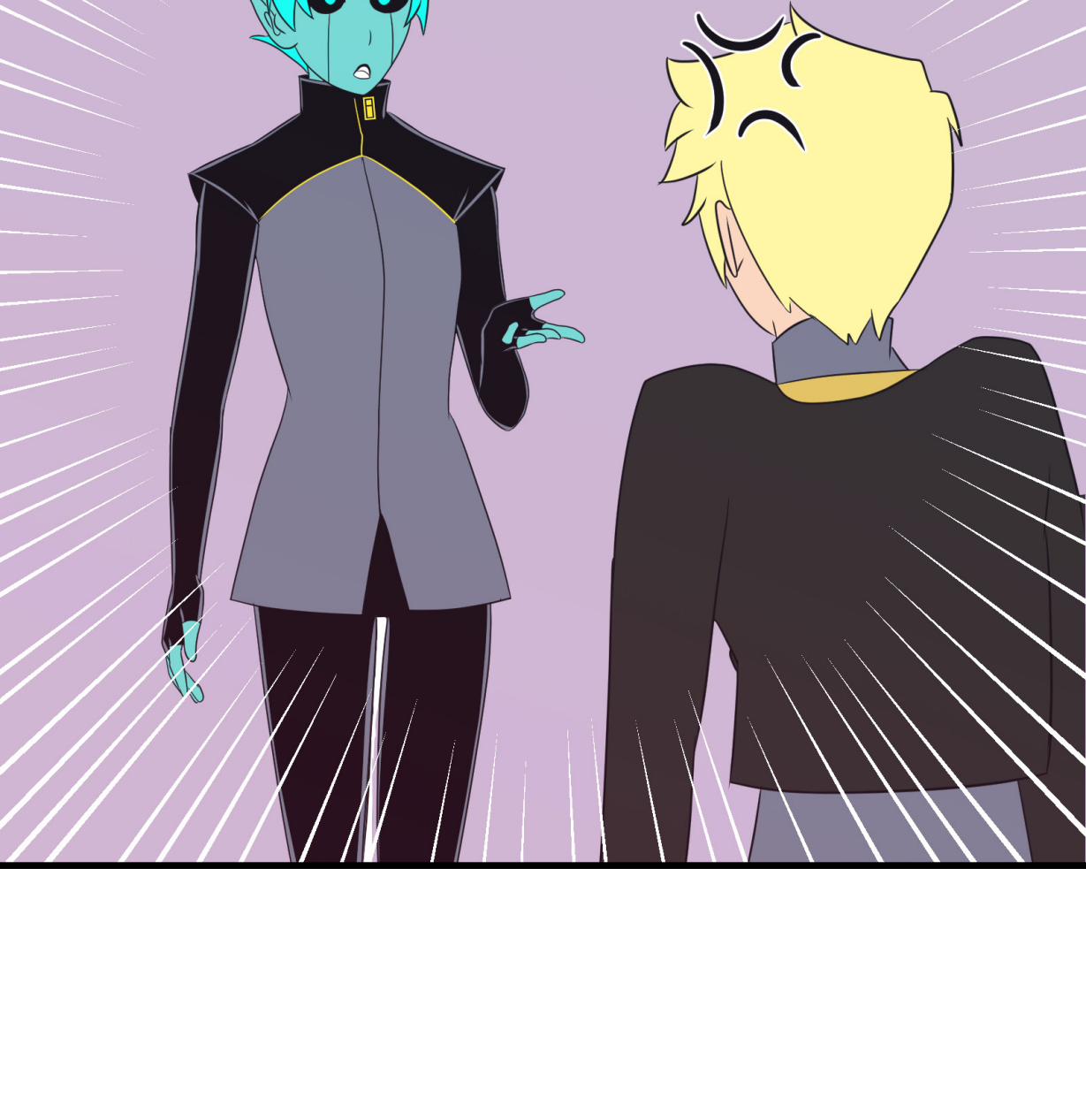
STILL, I AM SURPRISED NO HUMAN HAS FOUND A WAY FOR THIS TO BE DONE YET



AND WHY IT BE A HUMAN WHO HAS TO FIND A WAY FOR THAT TO BE DONE? I THOUGHT YOU SAID WE WEREN'T THE SMARTEST RACE



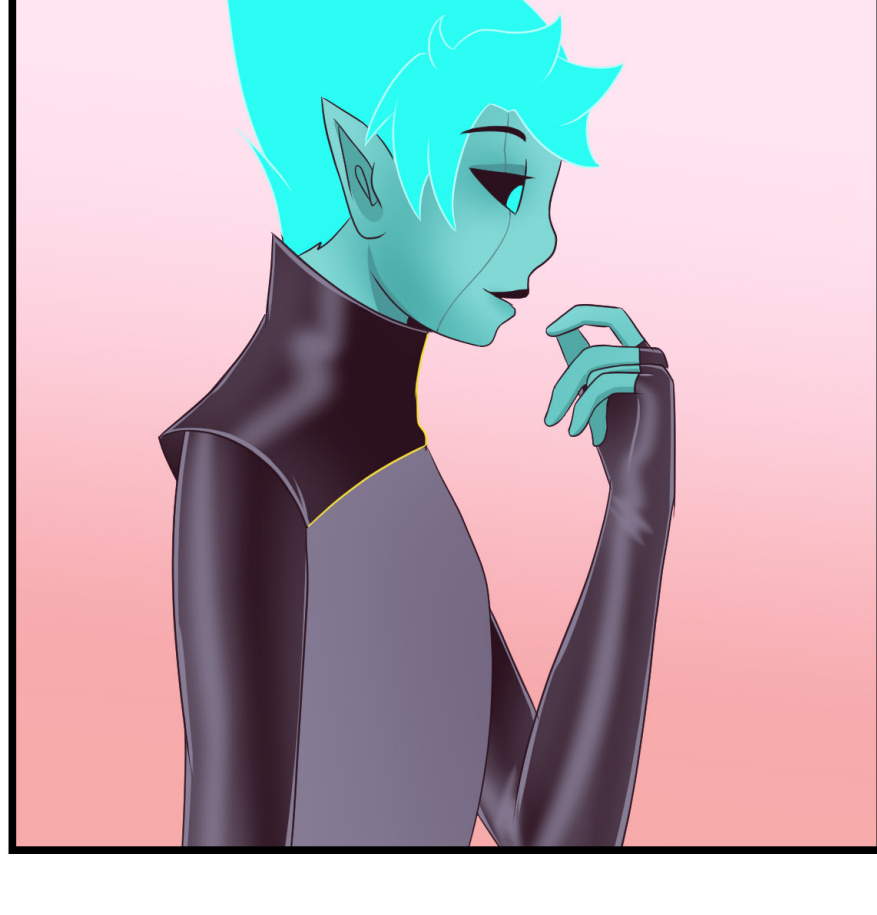
WELL, HISTORICALLY,
IS TRUE THAT HUMANS
ARE WAY UNDER THE
AVERAGE INTELLIGENCE
LEVEL FOR MOST
GALAXIES



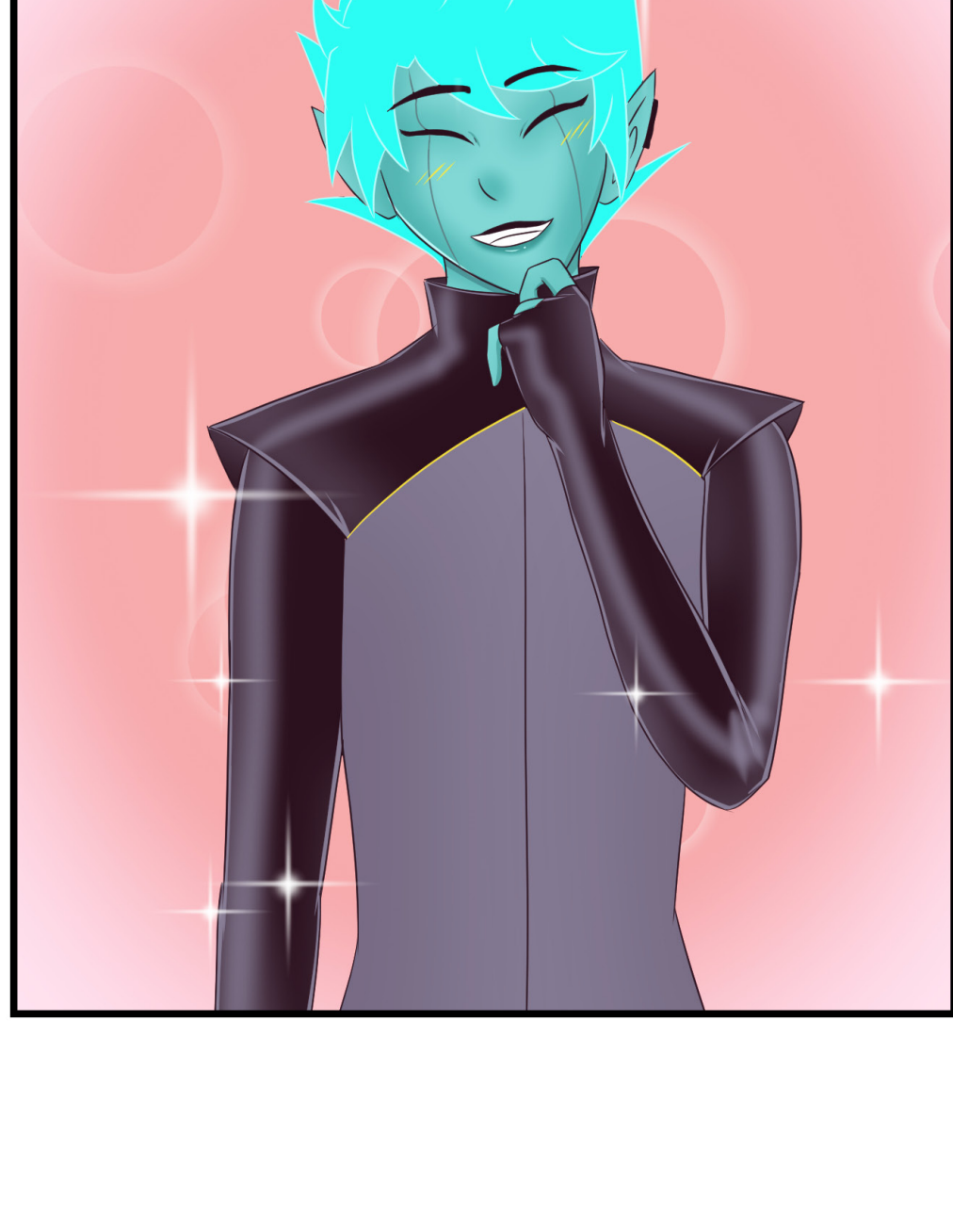
BUT BECAUSE OF
THAT YOU TEND TO FIND
THE SIMPLEST SOLUTION
FOR MOST OF THE
PROBLEMS YOU ARE
PRESENTED WITH



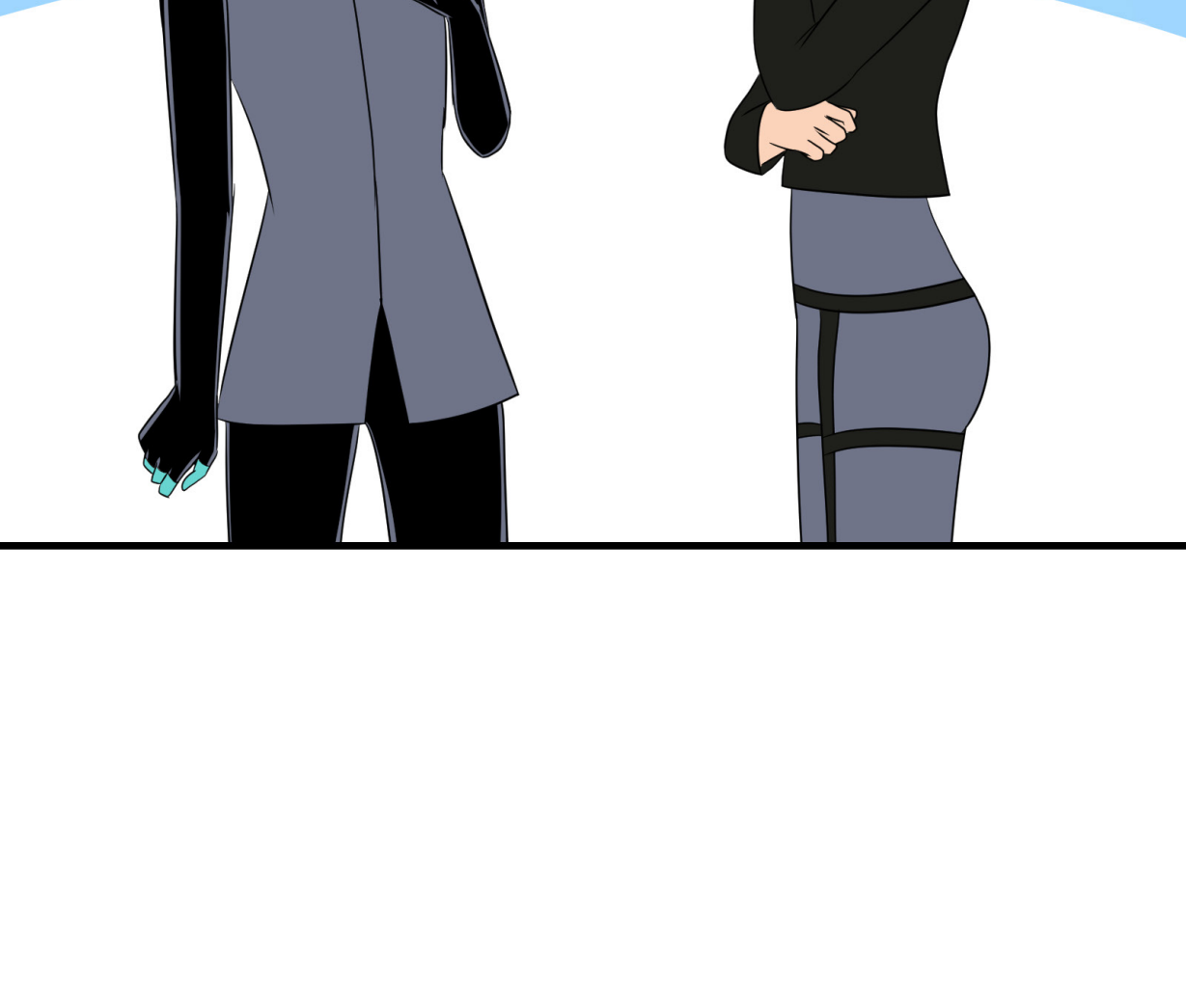
YOU DISREGARD
ORDERS, AND
BECAUSE OF
THAT, YOU HAVE
NOTHING TO STOP
YOU FROM
DISCOVERING
NEW THINGS



YOU REALLY ARE
FASCINATING



YOU'VE GOT
A WEIRD FETISH
WITH HUMANS,
HUH?



I DID NOT
MEAN IT
THAT WAY!



I WOULD NEVER
HAVE IMAGINED YOU
WERE SUCH A
PERVERT, KAZZY

I AM
NOT!



EASY SERGEANT,
THERE'S NO PROBLEM
AS LONG AS YOU
DON'T SAY THINGS
THAT SOUND
INAPPROPRIATE IN
FRONT OF THE
HIGHER UPS,
RIGHT?

IT LOOKS LIKE THEY
WON'T GET ALONG
AS BADLY AS
I THOUGHT