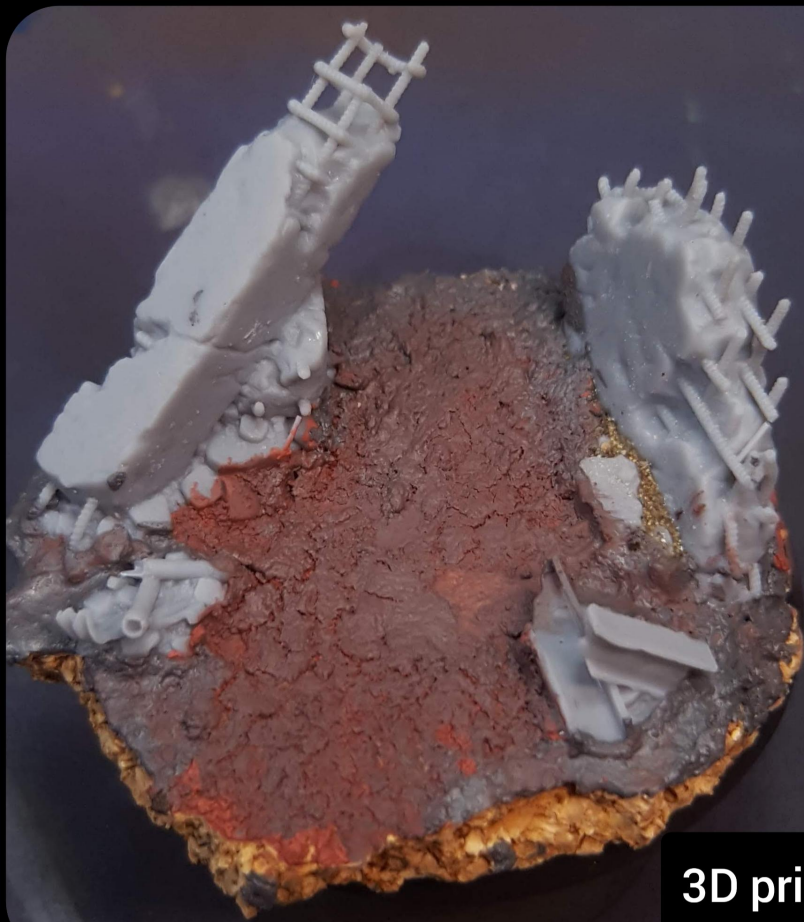


KHORNE
WASTE CITY
BASE





3D printed bits



Black primer

Basaltgrey general tone



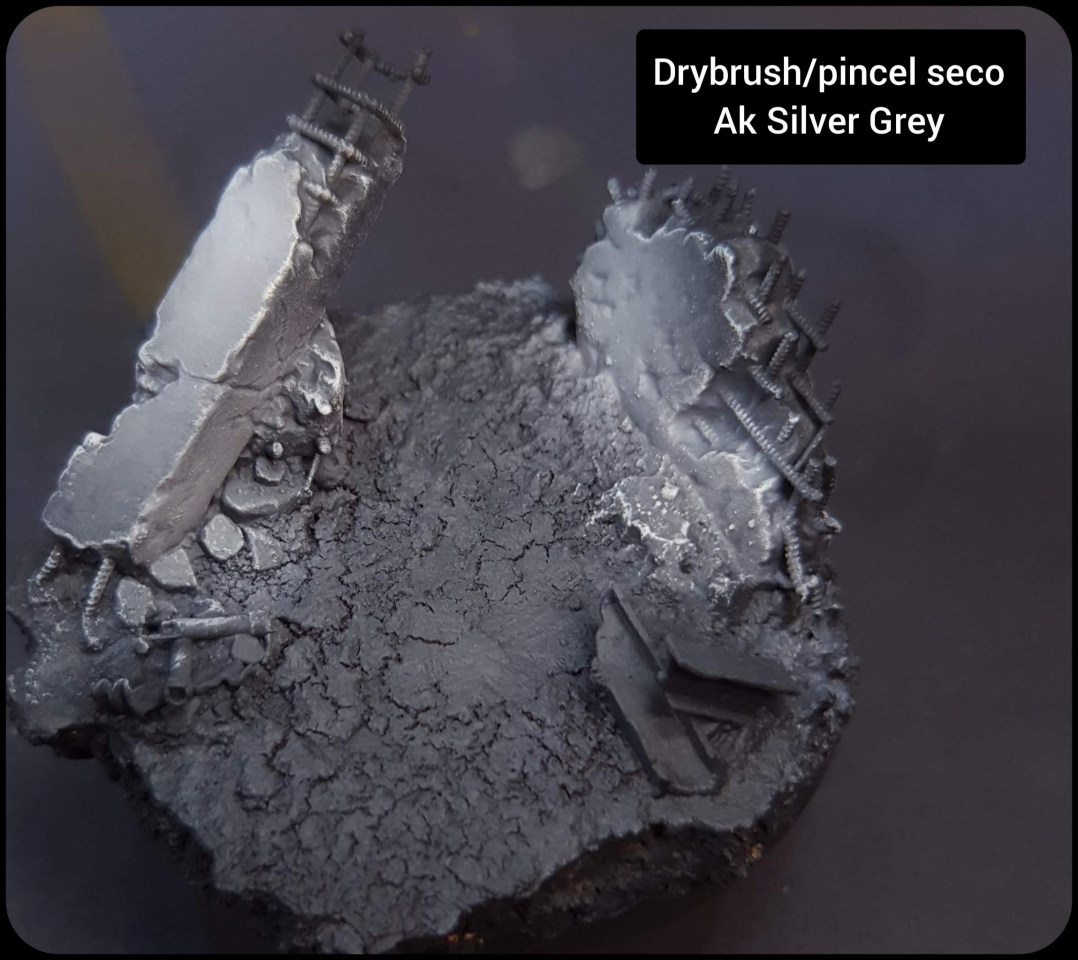
Ak Warm Grey
Walls/muros



Silver Grey
Walls/muros



Drybrush/pincel seco
Ak Silver Grey





Blood for the bloodgod

I put in an old brush and blow with the airbrush.

Pongo un poco en un pincel viejo y soplo con el aerógrafo.