

Fish and Whistle

John Prine



Tenthumbspro.com
For educational purposes only

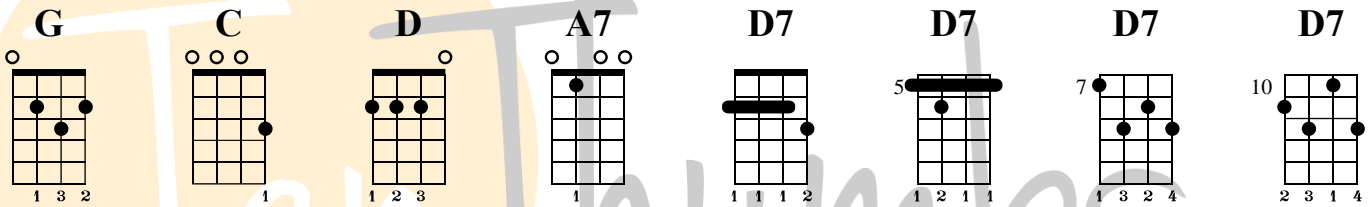
Key: Em

Tempo: 72 BPM

Chords needed: G, C, D, D7, A7

Video Link: <https://www.youtube.com/watch?v=EA9cdUpEcu8>

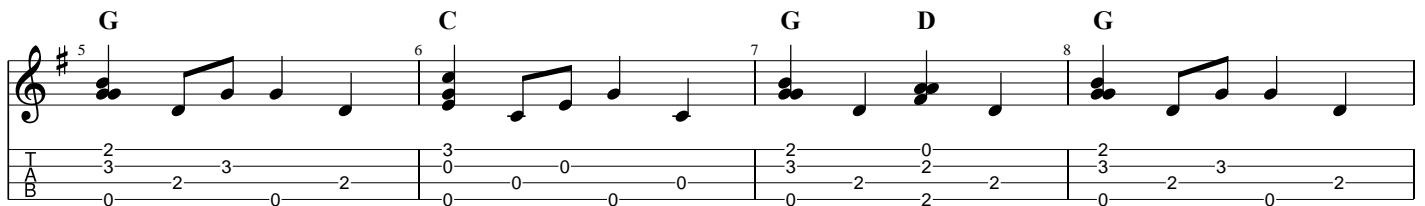
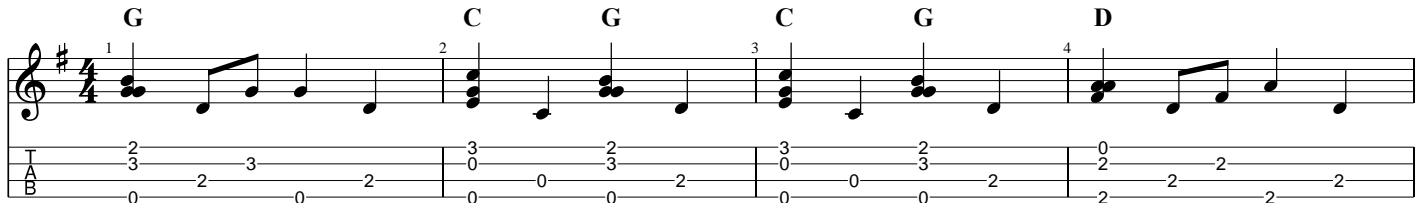
Chord Shapes:



Intro/Verse/Chorus Progression -

|G//// |C//G// |C//G// |D////
|G//// |C//// |G//D// |G////

Fingerpicking



Bridge Progression

|D//// |D//// |G//// |G////
 |A7//// |D7//// |D7//// |D7//// |D7////

D **G**

A7 **D7**

Alternative Fingerpicking Bridge with rising D7 chords

D **G**

A7 **D7** **D7** **D7** **D7**

[Intro - Fingerpick through the progression]

[Verse 1]

G **C** **G**
 I been thinking lately about the people I meet
C **G** **D**
 The carwash on the corner and the hole in the street
G **C**
 The way my ankles hurt with my shoes on my feet
G **D** **G**
 And I'm wondering if I'm gonna see tomorrow

[Chorus]

[Chorus]

[Instrumental]

[Bridge]

[Chorus]

