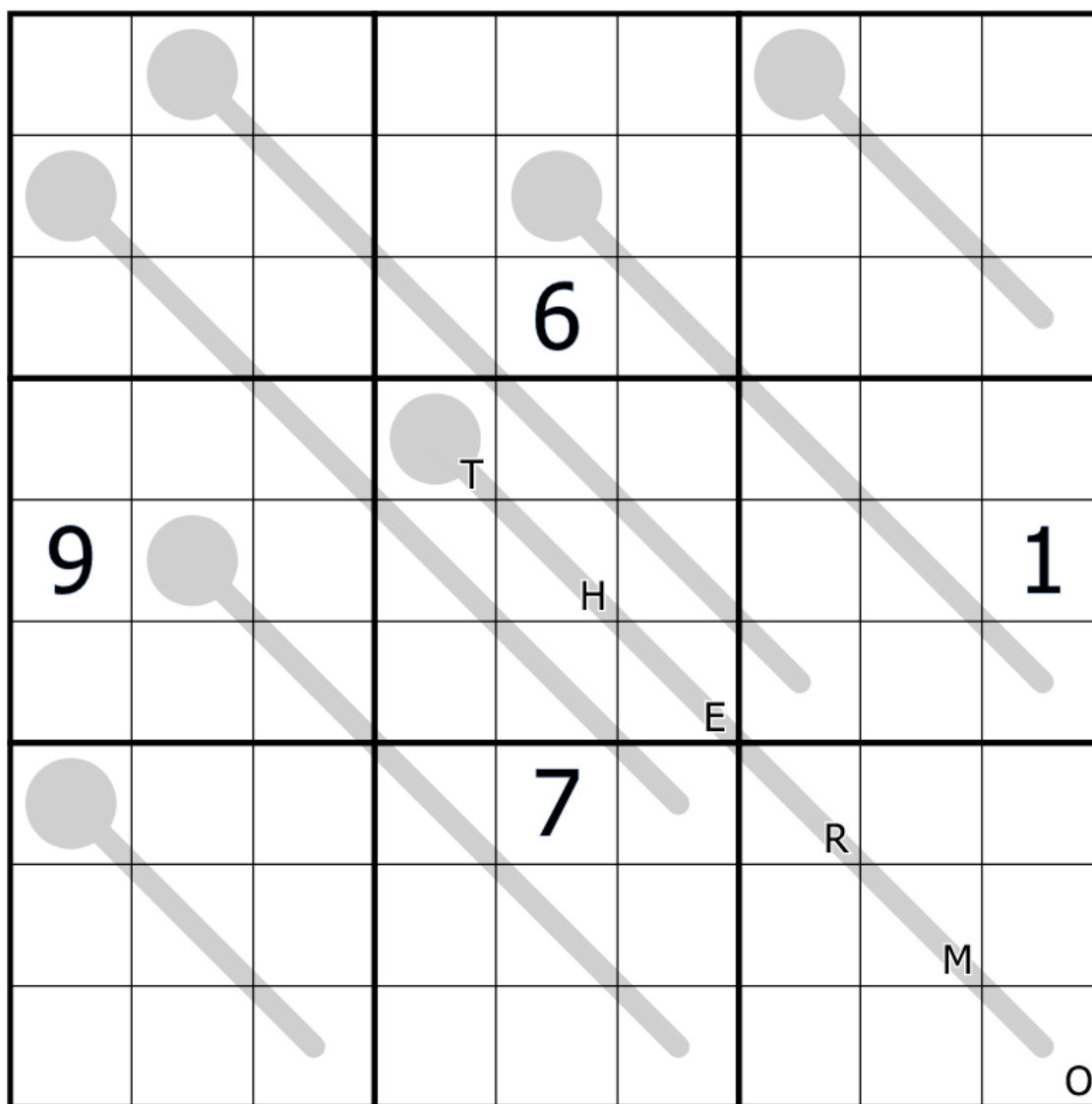


Cracking the Cryptic Patreon Reward Puzzles Feb 2022

In each puzzle, some letters are shown. Each different letter represents a different digit. The letter/number equivalences are different for each puzzle.

Thermo Sudoku

<https://app.crackingthecryptic.com/sudoku/g6T2NLp7hn>



Normal sudoku rules apply. Along thermometers, digits increase from the bulb to the tip.

For more puzzles like this, try CTC's Thermo Sudoku:

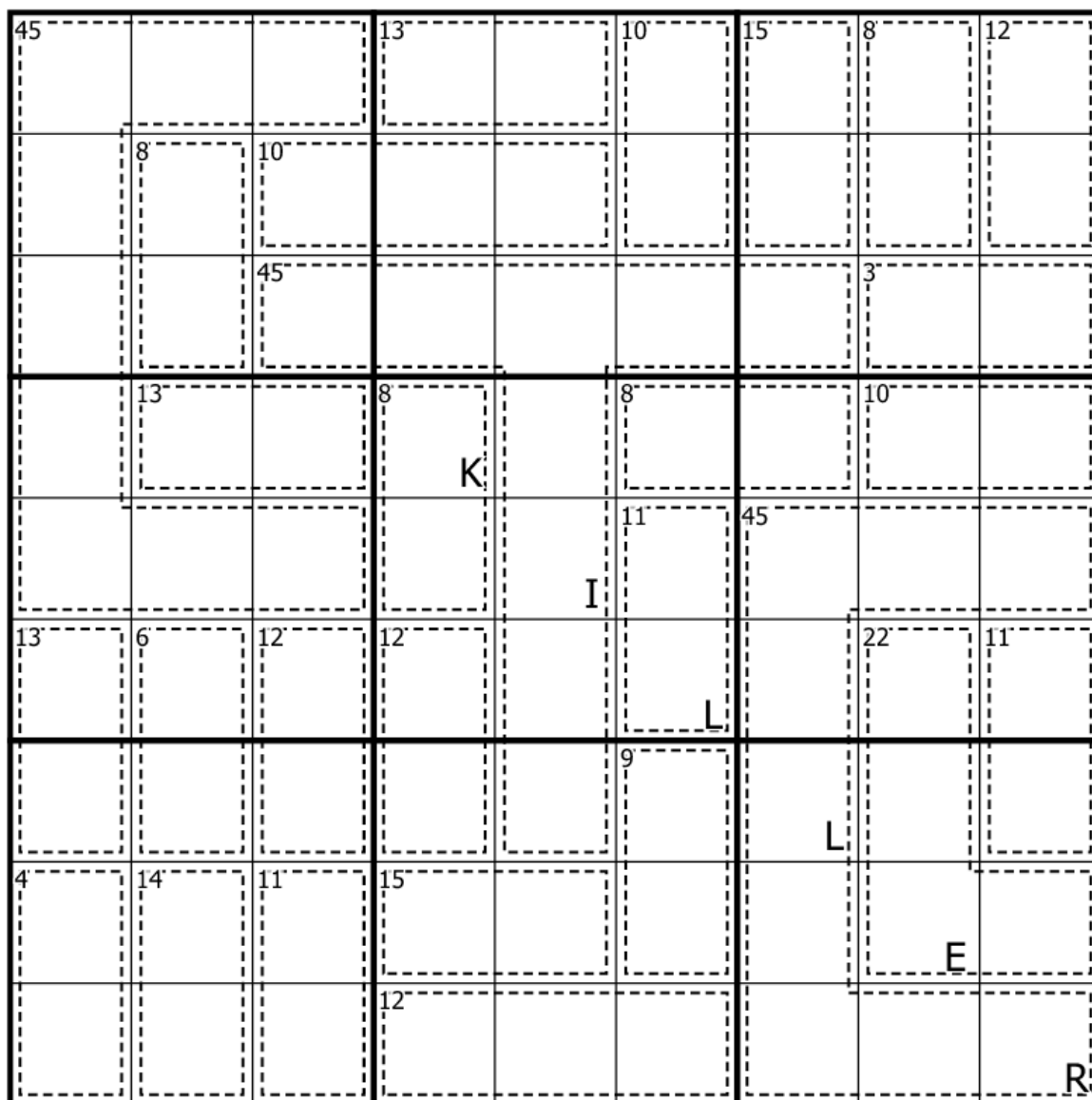
AppStore: <https://apps.apple.com/us/app/thermo-sudoku/id1513994223>

Android: <https://play.google.com/store/apps/details?id=com.StudioGoya.ThermoSudoku>

Steam: https://store.steampowered.com/app/1316390/Thermo_Sudoku/

Killer Sudoku

<https://app.crackingthecryptic.com/sudoku/6FgpRGfn4f>



Normal sudoku rules apply. Digits in cages do not repeat, and sum to the number given.

For more puzzles like this, try CTC's Killer Sudoku:

App store: <https://apps.apple.com/us/app/killer-sudoku-ctc/id1544165118>

Android: <https://play.google.com/store/apps/details?id=com.StudioGoya.KillerSudoku>

Steam: https://store.steampowered.com/app/1471910/Killer_Sudoku/

Miracle Sudoku

<https://app.crackingthecryptic.com/sudoku/BNLRm86LMd>

	1				6			
	2			4				
		4			3			2
2			7			6		
				6			5	
			4				6	

Normal sudoku rules apply. Orthogonally neighbouring cells cannot contain consecutive digits. Diagonally neighbouring cells cannot contain identical digits.

For more puzzles like this, try CTC's Miracle Sudoku:

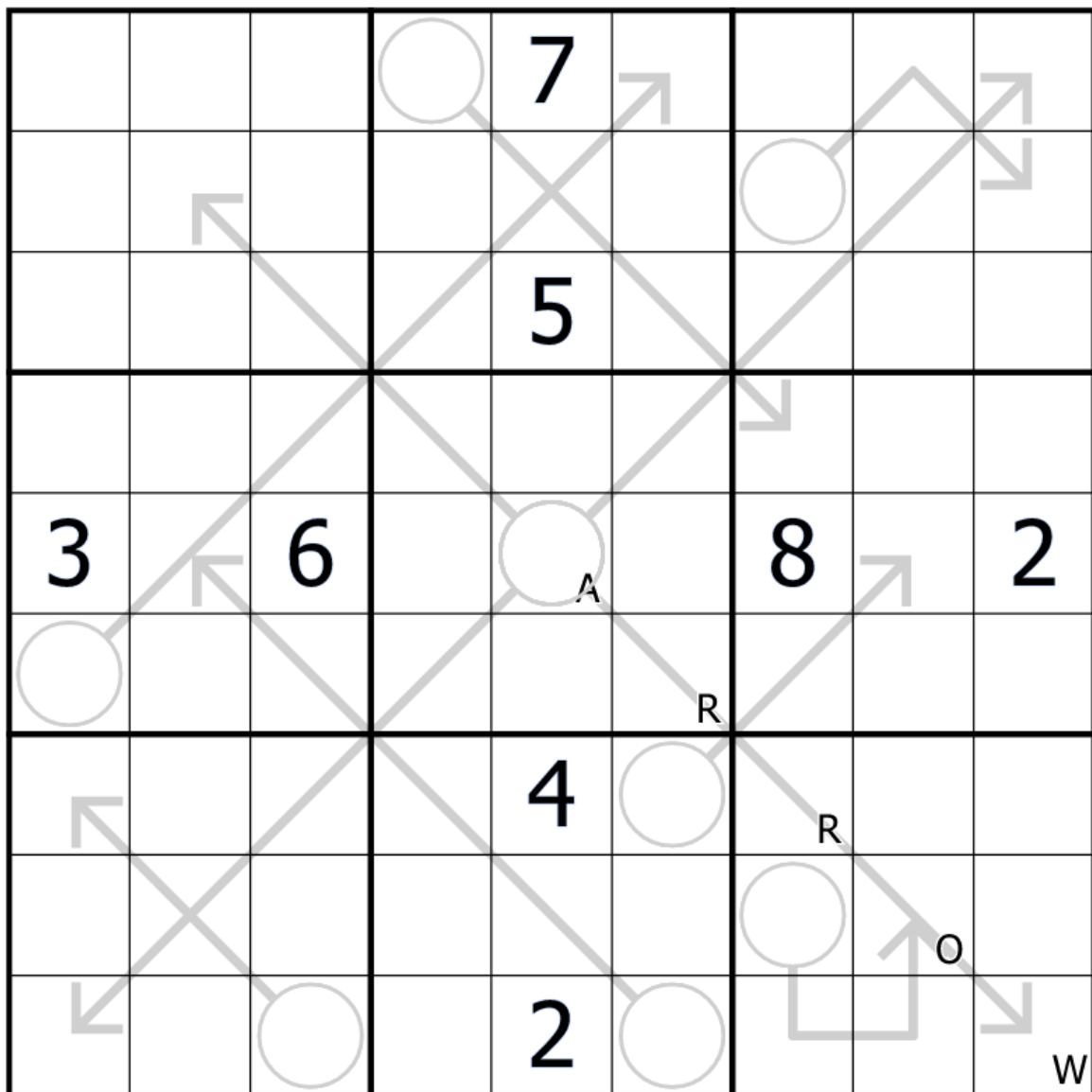
App store: <https://apps.apple.com/us/app/id1527363795>

Android: <https://play.google.com/store/apps/details?id=com.StudioGoya.MiracleSudokuCTC>

Steam: https://store.steampowered.com/app/1377260/Miracle_Sudoku/

Arrow Sudoku

<https://app.crackingthecryptic.com/sudoku/NgJGTfPG6F>



Normal sudoku rules apply. Digits along an arrow can repeat and must sum to the number in the attached circle.

For more puzzles like this, try CTC's Arrow Sudoku:

App store: <https://apps.apple.com/us/app/arrow-sudoku/id1568407537>

Android: <https://play.google.com/store/apps/details?id=com.StudioGoya.ArrowSudoku>

Steam: https://store.steampowered.com/app/1613680/Arrow_Sudoku/

Sandwich Sudoku

<https://app.crackingthecryptic.com/sudoku/m7hLGggh2r>

	0	4	0	11	0	3	2	13	27
15	S								
23		A	5						
35			N						
8				D		1			7
0						W			
0	7			4				I	
16							C		
10							4		H
15									

Normal sudoku rules apply. A clue outside the grid sums the digits sandwiched between the 1 and the 9 in that row/column.

For more puzzles like this, try CTC's Sandwich Sudoku:

App store: <https://apps.apple.com/us/app/sandwich-sudoku/id1476116705?ls=1>

Android : <https://play.google.com/store/apps/details?id=com.StudioGoya.SandwichSudoku>

Steam: https://store.steampowered.com/app/1117310/Sandwich_Sudoku/

Chess Sudoku

<https://app.crackingthecryptic.com/sudoku/hmBG8jbGpR>

						5		
					6		1	
			c	5				6
7	3			H			4	
					E			
	6					s	7	2
3					4		s	
	2		7					
		8						

Normal sudoku rules apply. Cells separated by a chess knight's move cannot contain identical digits.

For more puzzles like this, try CTC's Chess Sudoku:

App store: <https://apps.apple.com/us/app/chess-sudoku/id1500654482?ls=1>

Android: <https://play.google.com/store/apps/details?id=com.StudioGoya.ChessSudoku>

Steam: https://store.steampowered.com/app/1250560/Chess_Sudoku/

Classic Sudoku

<https://app.crackingthecryptic.com/sudoku/HNt7bMbgHf>

					5	3	2	
			3					4
			6	8				9
	4			3		9		
	9	7				8	5	
		8		5			1	
2				4	8			
9					1			
	8	6	7					

Normal sudoku rules apply.

For more puzzles like this, try CTC's Chess Sudoku:

App store: <https://apps.apple.com/us/app/classic-sudoku/id1488838275?ls=1>

Android: <https://play.google.com/store/apps/details?id=com.StudioGoya.ClassicSudoku>

Steam: https://store.steampowered.com/app/1188330/Classic_Sudoku/

Using the same corner cell of each puzzle, a word can be made from letters represented by the numbers appearing. Send this word to crackingthecryptic@gmail.com to be entered in the draw for a prize from Cracking the Cryptic.