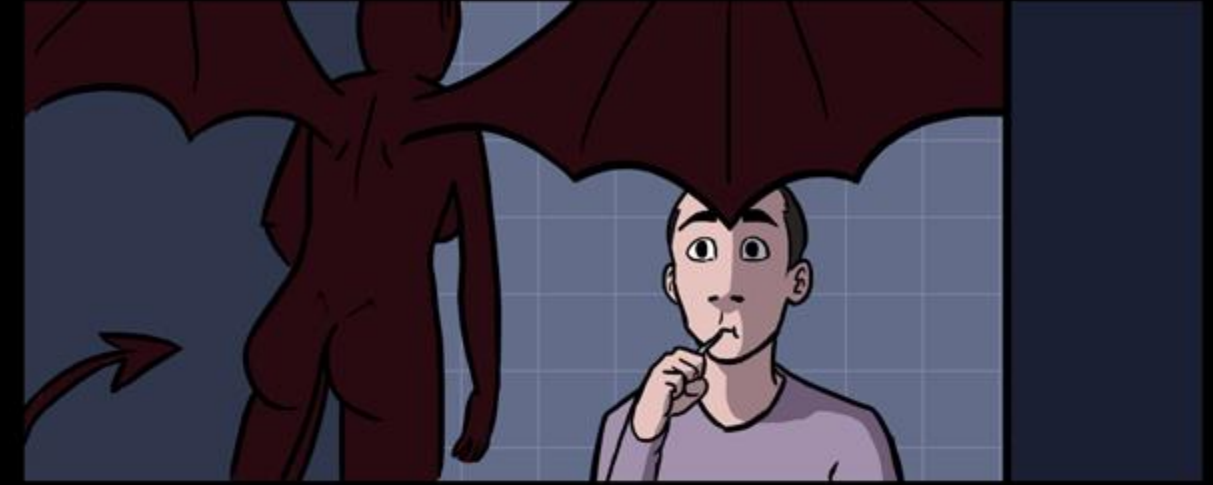




SORTIMID



SoRTIMID





OF COURSE,
A PROPER
WITCH...



... ALSO NEEDS
A FAMILIAR...



A PET.





SORTIMID



IS SHE GONE?

I THINK SO...

WHAT WILL WE DO?

GO OUT AND BUY CANDY, I GUESS...

SORTIMID

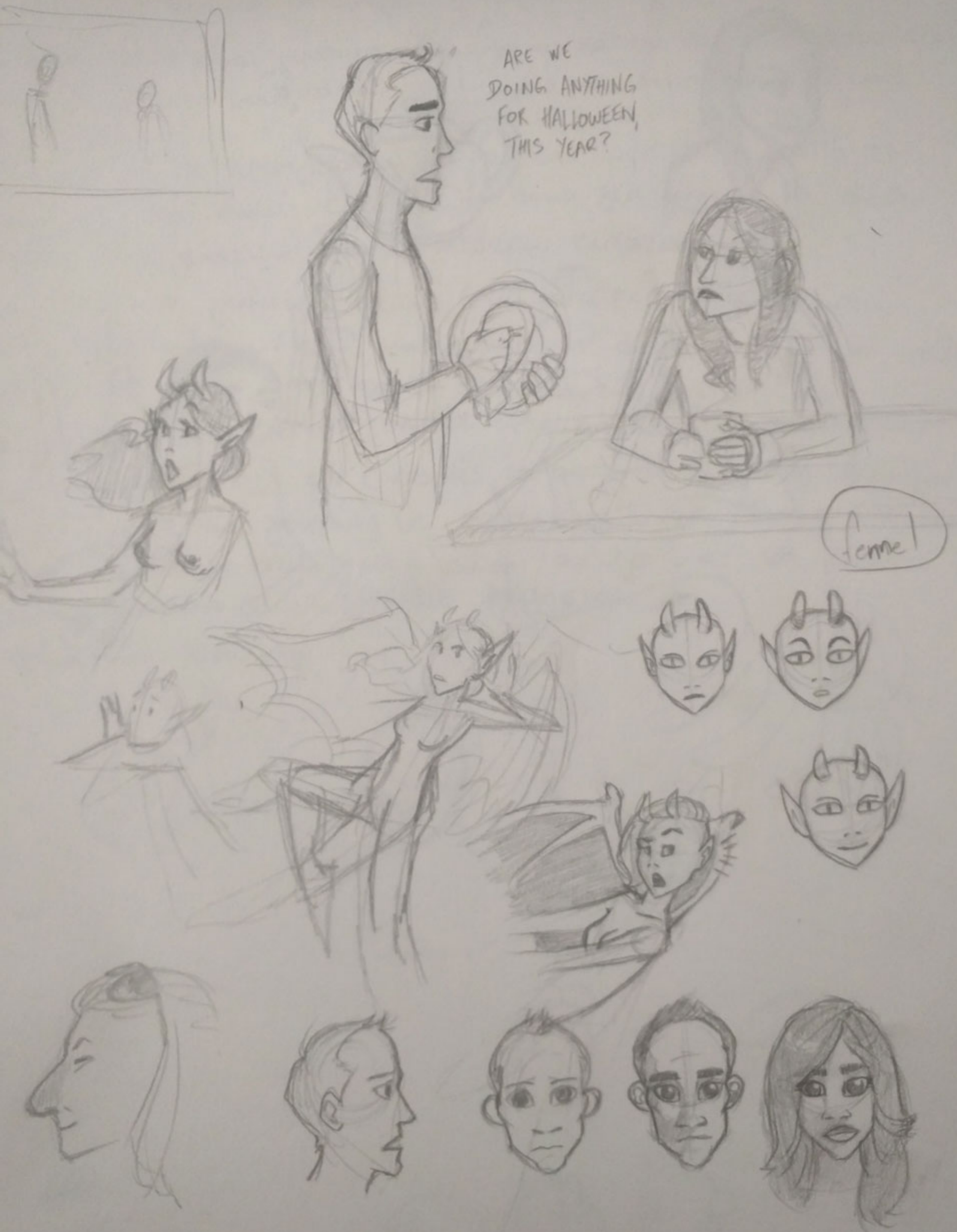


**THANK YOU
FOR READING!**

**FIND MORE AT:
SORTIMID.DEVIANTART.COM
AND
SORTIMID.TUMBLR.COM**



Extra Content



Most of my stories start as a very basic idea, usually in the form of a sketch. My own dilemma of whether I should do a Halloween transformation comic or not served as inspiration for *Joining the Halloween Spirit*.

In these first few sketches I'm trying to capture the defining moment that sparks the story: A couple reluctant to celebrate Halloween being overheard by a demon/spirit.

I'm looking for the best way to capture that moment here, with the Spirit leaning in to listen. As I search for the right pose, I exaggerate her stance more and more. While these figures do get the point across of a demon eavesdropping, I decided I don't want to show the Spirit's face at all in order to create a spookier horror atmosphere.

I'm also figuring out my character designs at this stage. You can see the evil spirit starts out fairly humanlike: a cute pixie girl with horns. Getting rid of the hair gave her a more sinister impishness that works better.

As for the couple, the only major change compared to the final product is that Amanda started out with dark hair. She's blonde in the final version, to create a starker contrast as she transforms into a raven-haired witch.

Not sure what's up with the super googly eyes in the bottom right.



Once I've settled on the basic premise and characters, I write a script.

Here, I've decided that Greg (**M** in the script) will be the reluctant one asked by Amanda (**W**) about their Halloween plans, a reversal from their roles in my first sketch. The Spirit (**S**) also had a single line of dialogue, which I later cut.

As you can see, my original plan was to have the Spirit transform Amanda into a witch and then have her make a pet out of her boyfriend. I like the idea of someone being transformed into a "transformer". I'd like to explore the concept in the future. However, for this story, I wanted the Spirit to be the main actor. It makes the onset of their mental changes clearer and I like the scene of Amanda hugging Greg halfway through their TFs.

I started *Joining the Halloween Spirit* in 2015, but couldn't finish it in time for October 30th. I had forgotten about a lot of these notes. I love how I describe the girl's transformation as "becomes more witchy". "Nurse! More witchiness! Stat!"

Halloween Spirit.

Wants to scare people. Doesn't want indifference

W: Are we doing anything for Halloween?

M: Bah, who has time ~~for~~ preparations take so much effort.

S: We can't have that.

M: Are you coming to bed?

W: In a minute.

Hands turn green. Eyes bulge. Skin green. Spoon turns into staff.
Eyes sparkle.

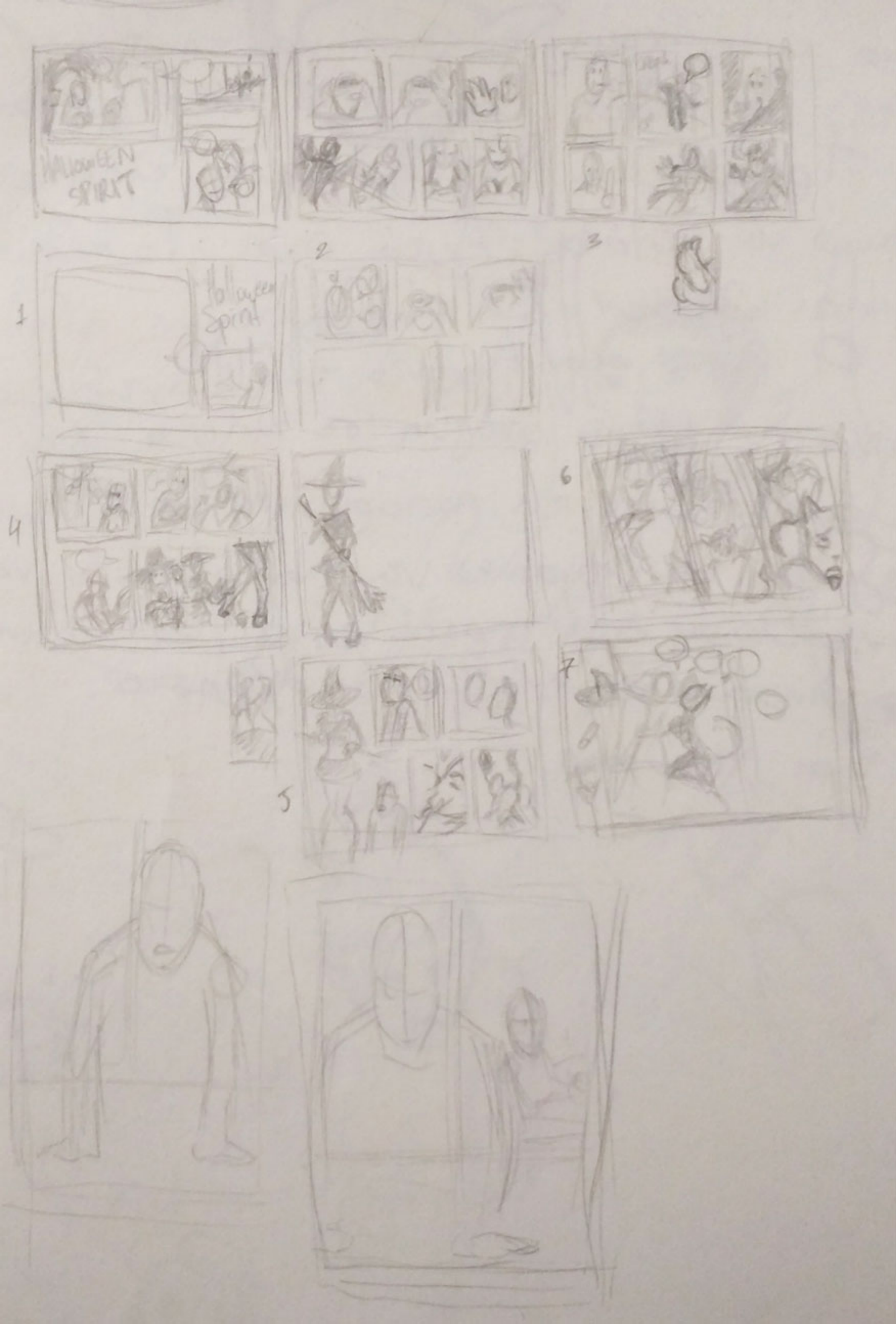
M brushes teeth, fairly oblivious.

M: Amanda? What.

W points wand / staff. M falls to ground clothes disappear.
He gets a collar. Turns into girl. Meanwhile girl becomes more sinister witchy. Clothes change into dark robes.

W You need to go buy candy

M Yes Mistress.



Next step: thumbnails! This is one of the few steps I still do exclusively with pencil on paper. At about an inch tall, the thumbnails help me break down the script into individual pages and panels.

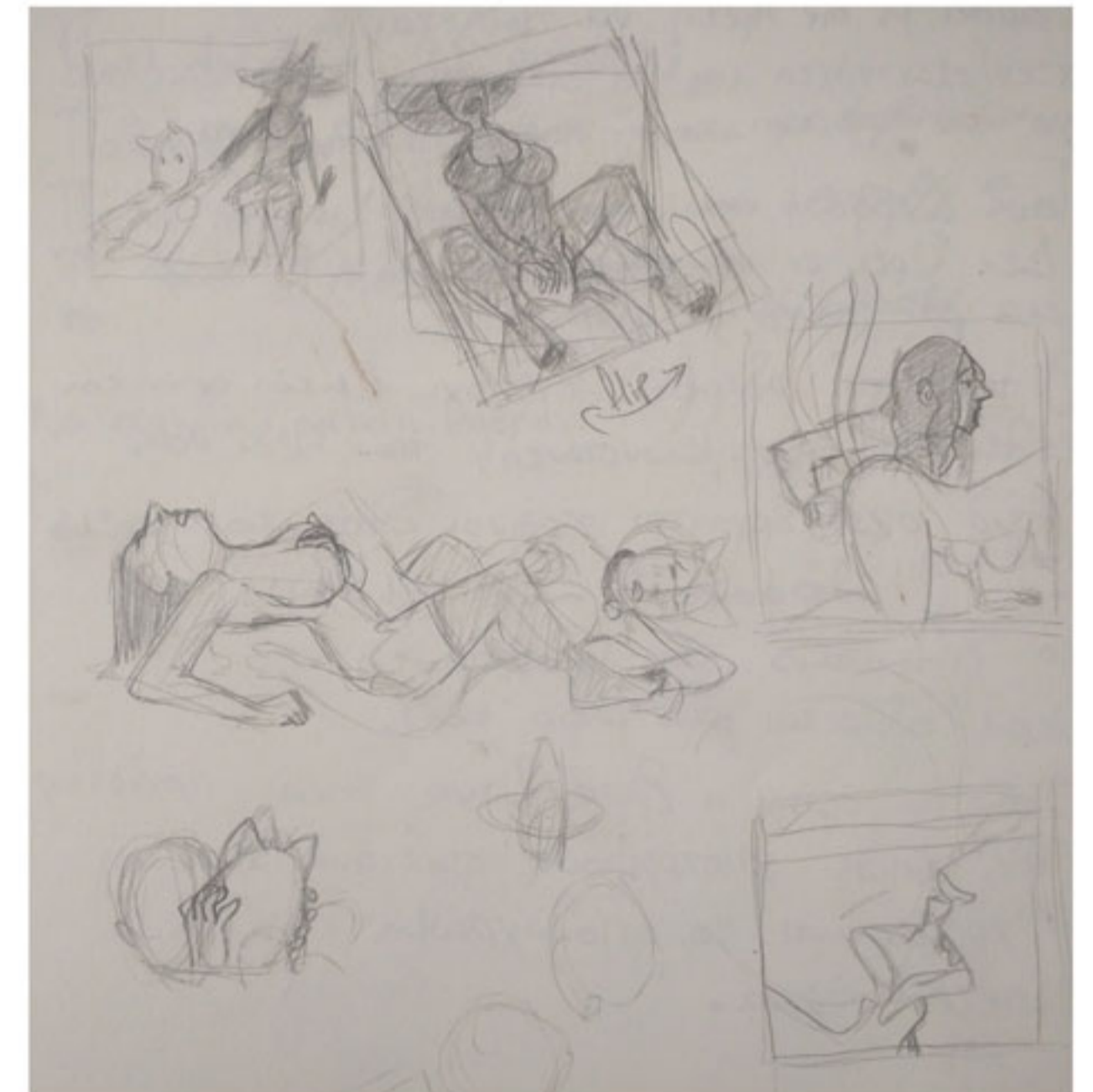
Aside from pacing, I also explore compositions at this stage. At the bottom of page 4 you can see Amanda's legs in thigh highs and heels, and, below that, a different rendition of the same panel from her point of view. At the top left, you can make out the very first panel's layout with the plant in foreground left, Amanda in the center and Greg in the middleground on the right. Same with the overview shot of the couple lying in bed on page 7.

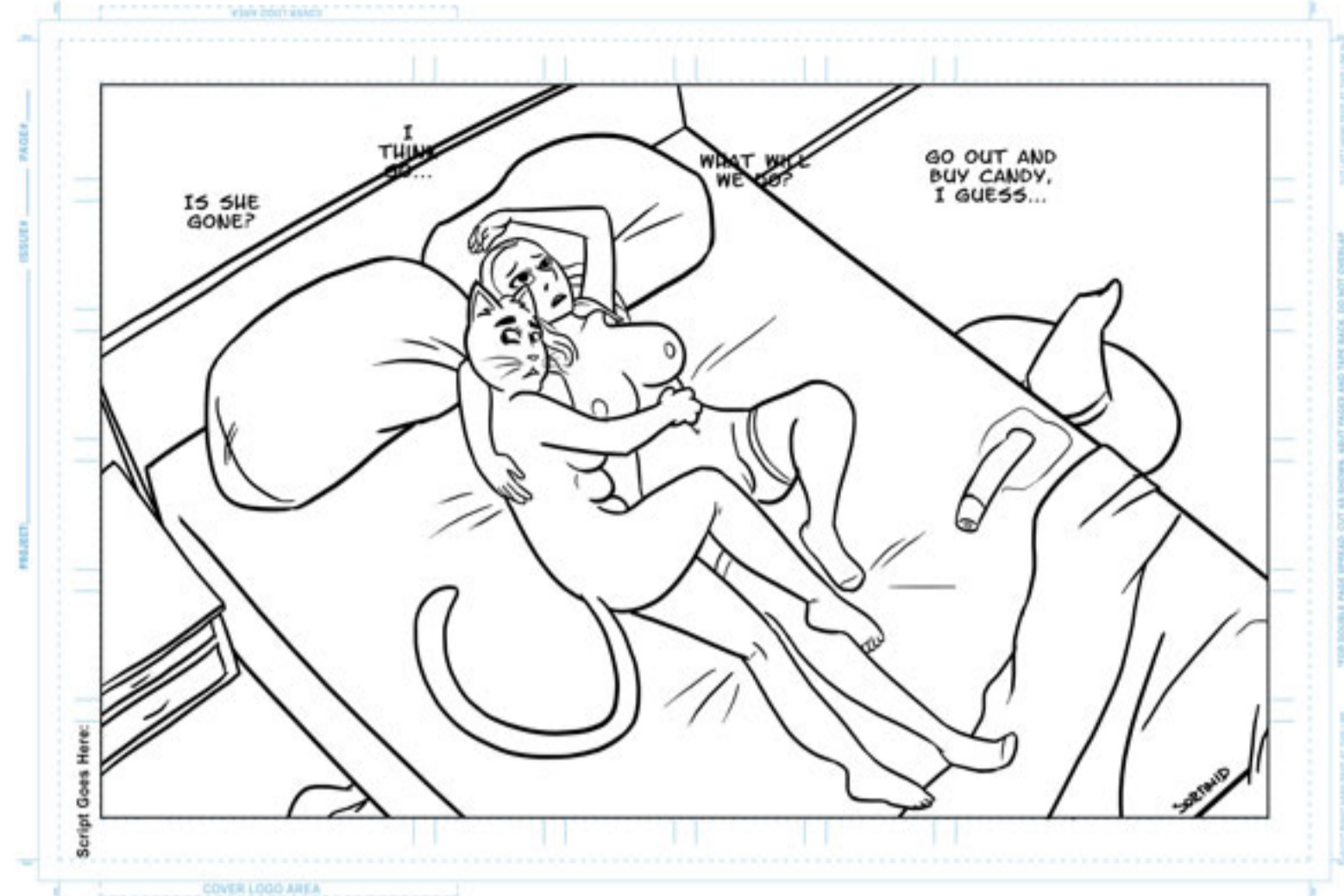
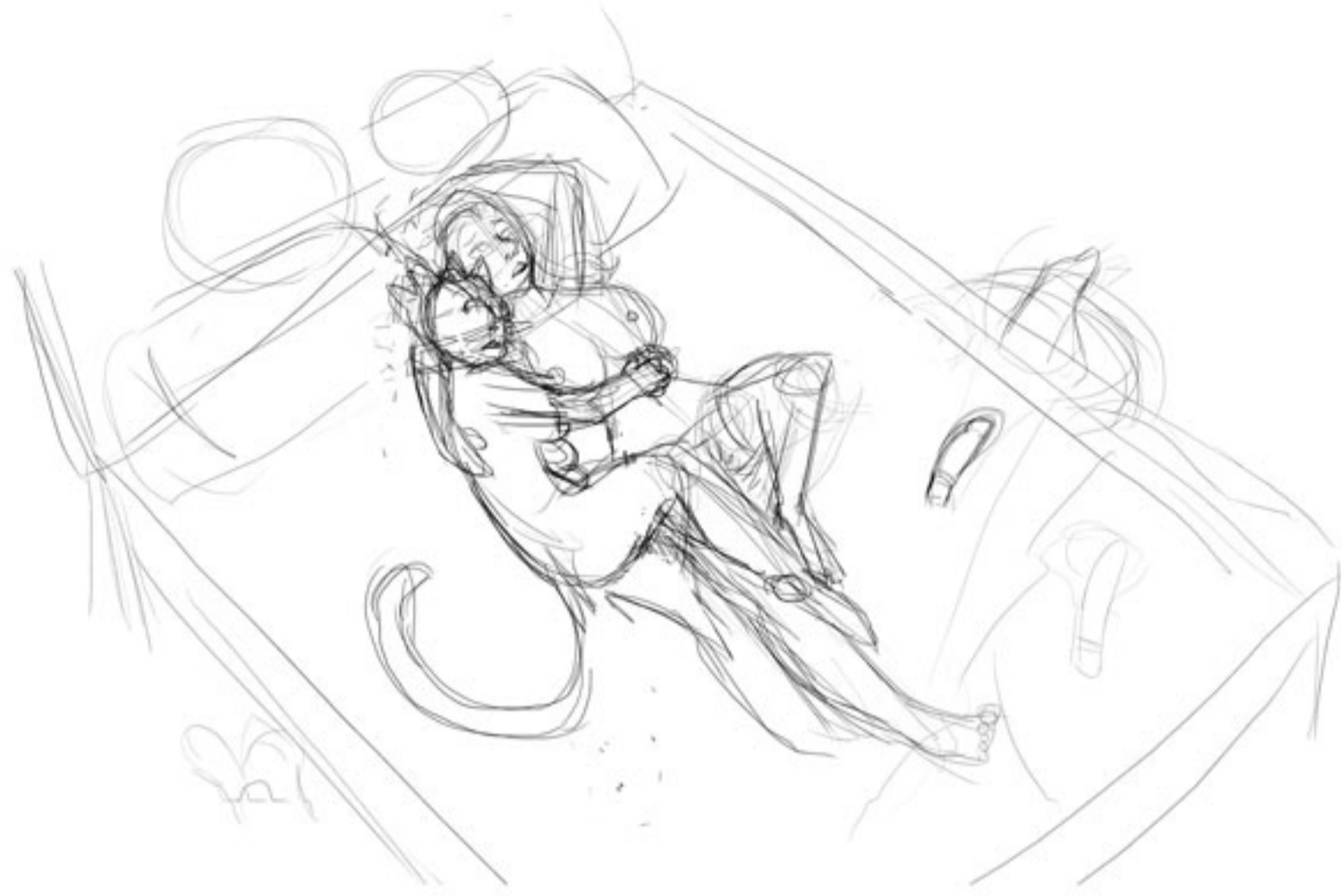
Some pages barely change from thumbnail to final version. Others go through several incarnations before I can make everything work. Pages 1 and 2 (in the upper left) went through several revisions until I figured out the best arrangement for the intro, title and beginning of Amanda's TF.

Page 6, the sex scene, is only three tall panels in these thumbnails. You

can barely make out the couple kissing, catgirl between the witch's thighs and then her face panting in the foreground as she's being penetrated.

In the end, I expanded this scene to include some full-body shots of our victims post-transformation but also for the sake of clarity. It's easier, now, to follow the dildo through the story from toothbrush to witch to pussy --see what I did there?





Thanks for buying the Collector's Edition of *Joining the Halloween Spirit!*

I can't stress enough how grateful I am for your support. People like you allow me to put food on the table by doing something I love. Your patronage helps me create more work for the entire transformation community to enjoy.

For commissions or comments you can find me here:

srtimid@gmail.com

<http://sortimid.deviantart.com>

<http://sortimid.tumblr.com>

Happy Halloween and thank you, again!

